

Chapter

1

Customizing Photoshop for Your Projects

Photoshop is a wonderfully powerful program. Not only can you do so many things with Photoshop, there are always a number of ways to accomplish each project. By setting Photoshop to work for you, you can develop your own techniques and find ways to adapt the standard tools to those techniques.

Using Photoshop is really learning to customize the application for your own personal projects and your own personal style. When you work on an image, you may prefer to see some palettes and not others. You may also prefer certain tool settings to others. Setting up Photoshop to work your way makes you more productive, the program more useful, and everything you do with Photoshop much more fun.

With Photoshop CS2, Adobe has taken customization to a new level. You can now modify your settings and preferences in more ways than ever before by adjusting the workspace, the palettes, and the tools to fit the requirements of specific projects or just for your own preferences. These may seem like boring steps, yet setting up Photoshop's preferences and the workspace, knowing how to make your own gradients, customizing some shortcuts and tools, and designing templates and brushes can save you time as you work on images, and free you to become more creative. By customizing Photoshop and setting the application your way, you gain familiarity with the program and become more comfortable as you try different projects.

Top 100

- | | | | |
|------------|---|----|---|
| # 1 | Change the Color Settings to Fit Your Projects | 4 |  |
| # 2 | Set the Preferences for the Way You Work | 6 |  |
| # 3 | Customize Your Personal Workspace. | 8 |  |
| # 4 | Personalize Your View of the Bridge | 10 |  |
| # 5 | Create a Keyboard Shortcut for a Favorite Filter | 12 |  |
| # 6 | Create an Action to Increase Your Efficiency | 14 |  |
| # 7 | Design a Customized Brush with Your Settings. | 16 |  |
| # 8 | Make a Special Gradient to Suit Your Design | 18 |  |
| # 9 | Calibrate and Profile Your Monitor for Better Editing . . . | 20 |  |
| #10 | Turn On the Full Power of Photoshop with a Digitizing Tablet. | 22 |  |

CHANGE THE COLOR SETTINGS

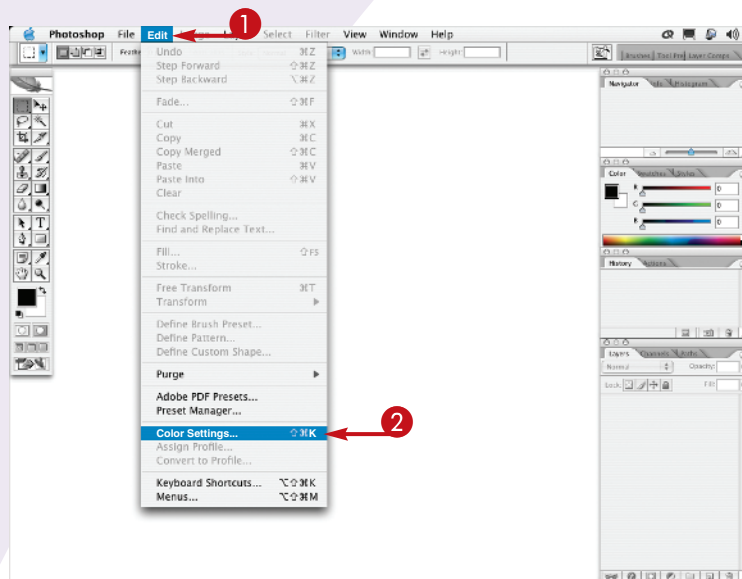
to fit your projects

Using Adobe Photoshop CS2 is an image-altering experience! You can work on images for print or for the Web. You can improve photographs, repurpose them, or create original designs. Because printed images and Web images have different limits on the range of colors they can represent, you need to set the working color space for your project.

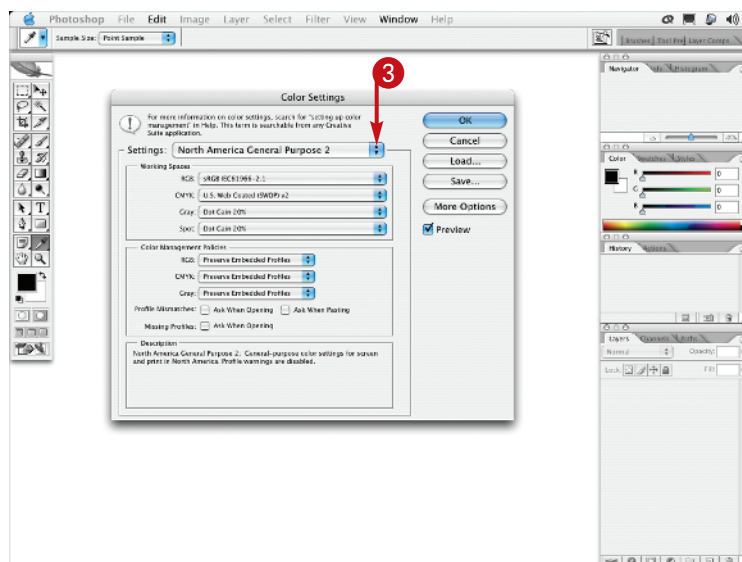
The first time you open Photoshop, you are asked to choose your color settings. Photoshop's default color space is set to sRGB, the correct color space for preparing Web images. However, sRGB is a very

limited color space, much smaller than what printers can actually produce. Most photographers and designers prefer the larger color space called Adobe RGB (1998), a good color space for working with photographs and projects you plan to print.

In Photoshop CS2, you can easily choose your color space and even use the new predefined color space settings. Try the North America Prepress 2 settings with the Adobe RGB (1998) color space for images that you plan to print. Your printed colors will look much better.

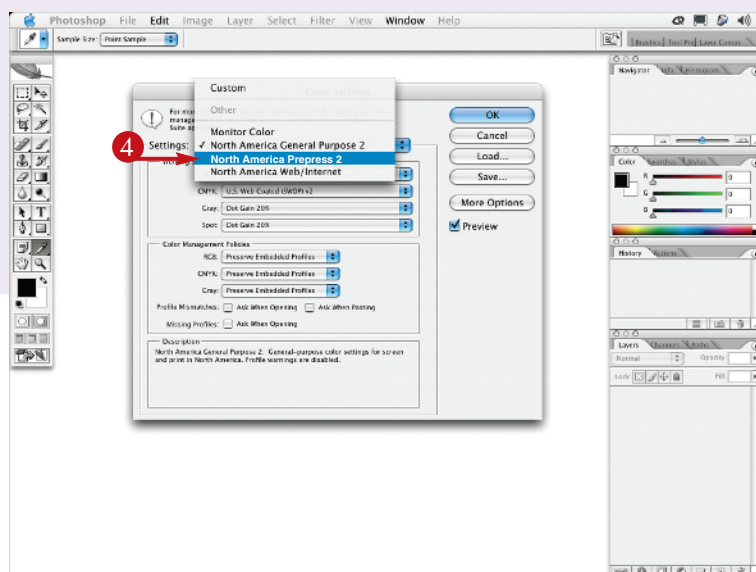


- 1 Launch Photoshop and click Edit.
- 2 Click Color Settings.

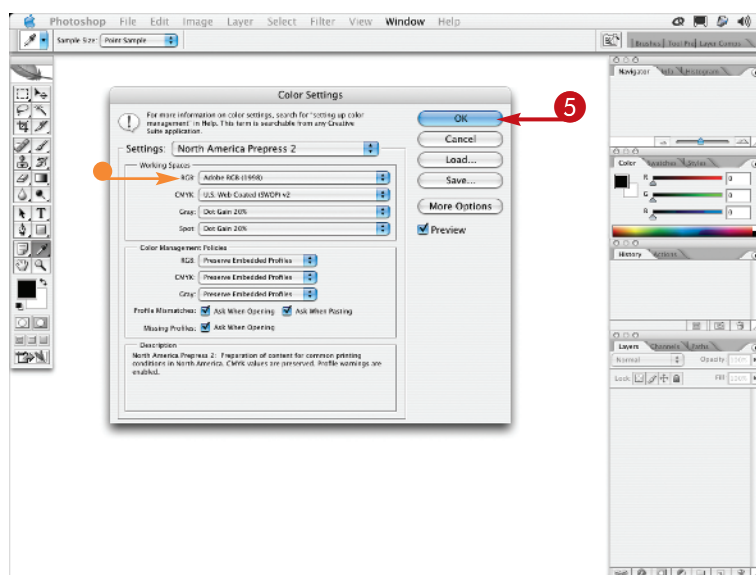


The Color Settings dialog appears.

- 3 Click the Settings up-down arrow.



- 4 Click North America Prepress 2 from the preset color settings pop-up menu.



- The RGB setting changes to Adobe RGB (1998)

The rest of the color settings box changes to reflect the preferred working space for images that you print.

- 5 Click OK.

The Color Settings are saved until you reset your preferences.

TIPS

Try This!

Click More Options to show Conversion Options. Click the Engine up-down arrow and click Adobe ACE. The Adobe Color Engine is considered the best all-around choice for conversions. The selections for the Intent depend upon the type of project. Click Relative Colorimetric for a graphic design project. Click Perceptual for photography.

Customize It!

You can save your own Color Settings preset. The name of the preset changes to Custom when you deselect any check box (☐) or make any other changes. Click Save after customizing your settings. Type a name in the Save dialog and click Save in that dialog. Your customized preset appears in the Settings pop-up menu, ready for you to choose.

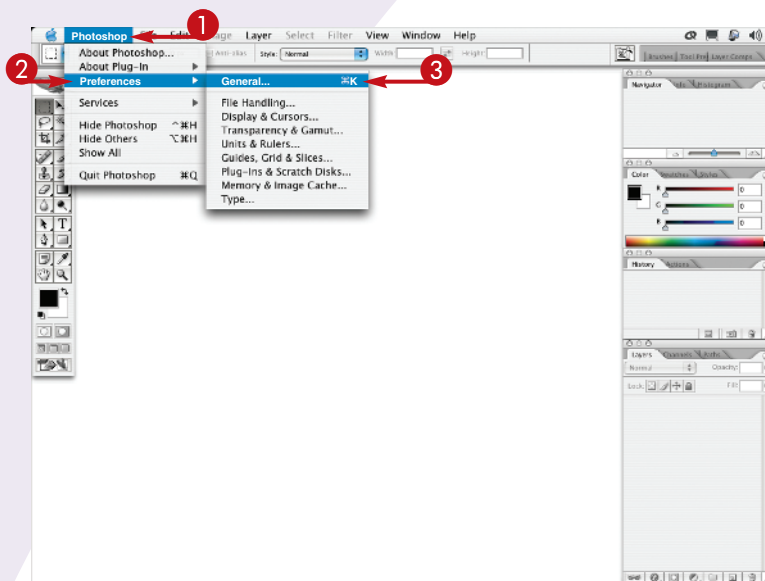
SET THE PREFERENCES

for the way you work

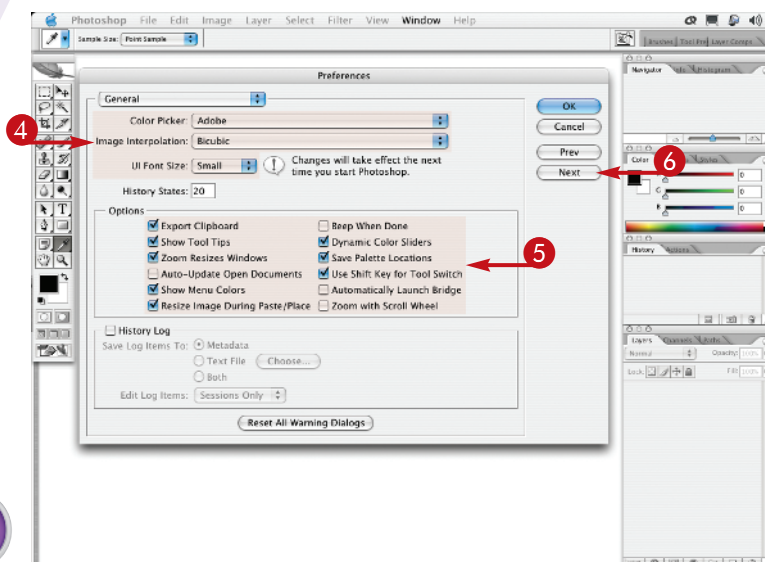
Photoshop includes nine different preferences dialogs in addition to the Color Settings. Although you can work with the default settings, changing some of these can make your computer run more efficiently and changing others can make it easier to work with your projects. For example, by default, Photoshop is set to use more than half of the available RAM. You can lower this default setting to 15 percent or 25 percent depending on how much RAM you have installed in the computer, especially if you have several other applications open at the same time. You can change the default colors for the guides and

grid when they are too similar to those in your image. Other personalized options, such as asking Photoshop to automatically launch the Bridge, can help you use Photoshop the way you want.

Read through each preference dialog to familiarize yourself with the choices. Select the settings that correspond to your computer's memory and hard drive space, the types of files you work on, and your personal preferences. Preparing Photoshop to work for you can enhance Photoshop's speed and your productivity.

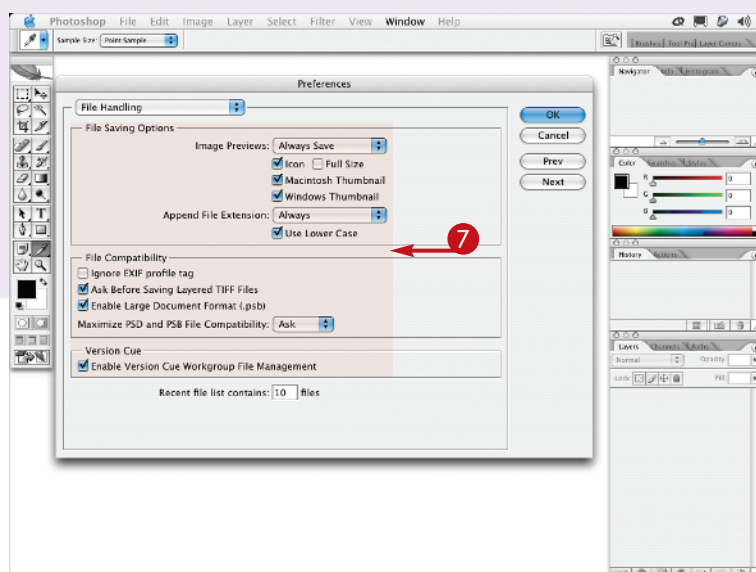


- 1 Click Photoshop (Edit).
- 2 Click Preferences.
- 3 Click General.



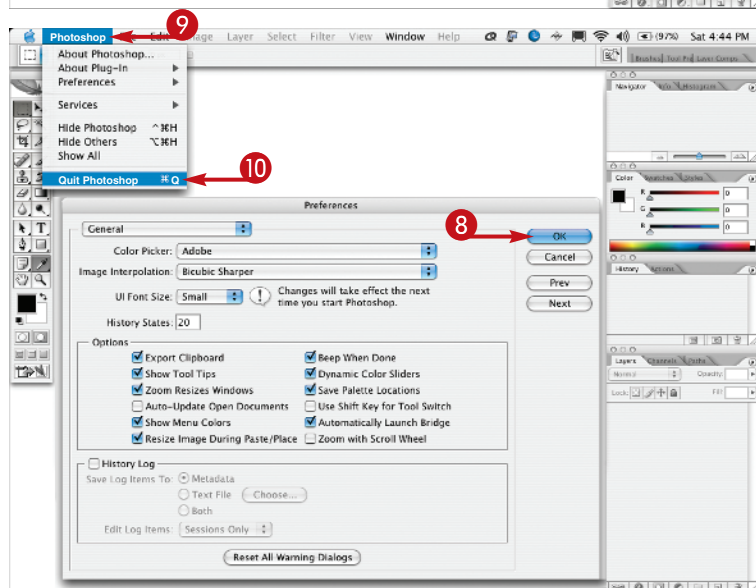
The Preferences dialog appears.

- 4 Click any up-down arrow to change your settings.
- 5 Click to select or deselect the options you want.
- 6 Click Next to continue customizing the preferences.



The dialog changes to the File Handling preferences.

- 7 Repeat Steps 4 to 6 to set the other preferences.



- 8 Click OK when you have cycled through all the preferences dialogs and return to the General dialog.

- 9 Click Photoshop.

- 10 Quit Photoshop (File ⇨ Exit).

The next time you start the application, your own settings take effect.

TIPS

Desktop Trick!

You can use keyboard shortcuts to set the Preferences. Press ⌘-K (Ctrl+K). Set your options for General preferences. Then press ⌘-2 (Ctrl+2), and set your choices for File Handling. Press ⌘-3 (Ctrl+3), and so on, for each of the nine Preferences dialogs.

Try This!

Pressing the Shift key and an appropriate letter toggles the tools in the toolbar. Streamline this shortcut by changing a setting in the General Preferences dialog. Deselect the Use Shift Key for Tool Switch check box (☐). Now you can just press the appropriate letter to toggle the tools.

Did You Know?

You can restore the Preferences any time by holding the ⌘-Option-Shift (Ctrl+Alt+Shift) keys as you launch the application. A dialog appears asking if you want to delete the Adobe Photoshop Settings File. Click Yes, and the preferences are reset to the defaults.

Customize your PERSONAL WORKSPACE

The workspace in Photoshop refers to the layout of all the different palettes and tools on your monitor screen. Because your productivity depends on how easily you can access palettes or find the tools you need, Photoshop allows you to design your own workspace and save it.

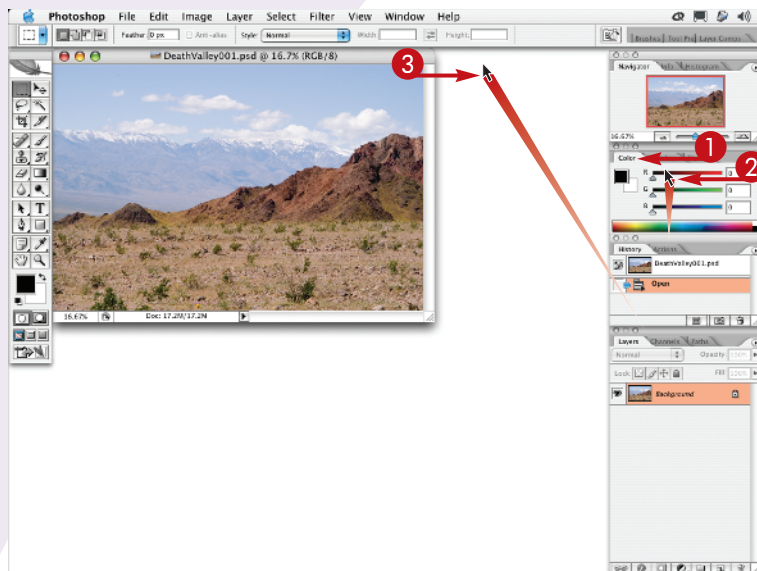
You can place the palettes you use most in front and hide others. You can separate the palettes, lengthen one and shorten another, and move your toolbar where it is more convenient for you. You can customize keyboard shortcuts and menus and save the current palette locations with your keyboard

shortcuts and menu changes. If you move or close a palette, you can easily return to your saved workspace.

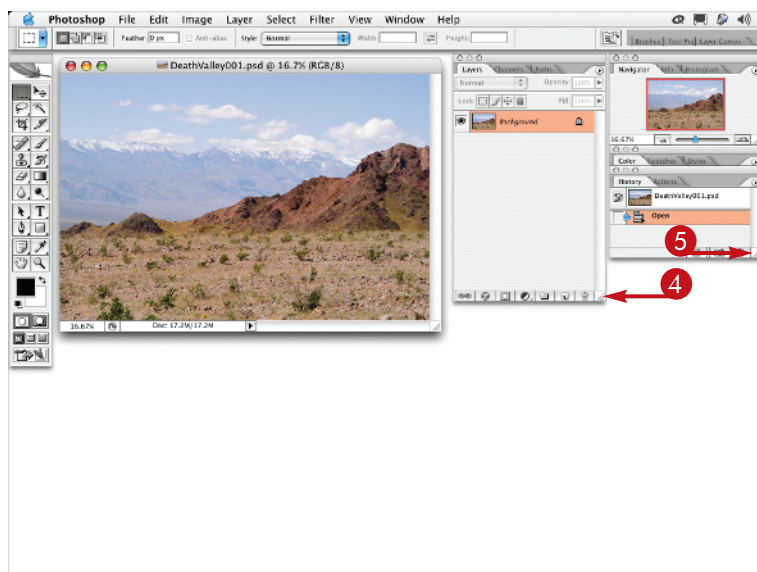
You can even set up more than one workspace to accommodate different tasks, such as one for color-correcting photographs and one for working with type.

You can also set up different workspaces for others who may share the computer. Each person can quickly access the tools he or she uses most often by selecting his or her personal workspace from the menu.

***Note:** You can make any changes you prefer for your custom workspace.*



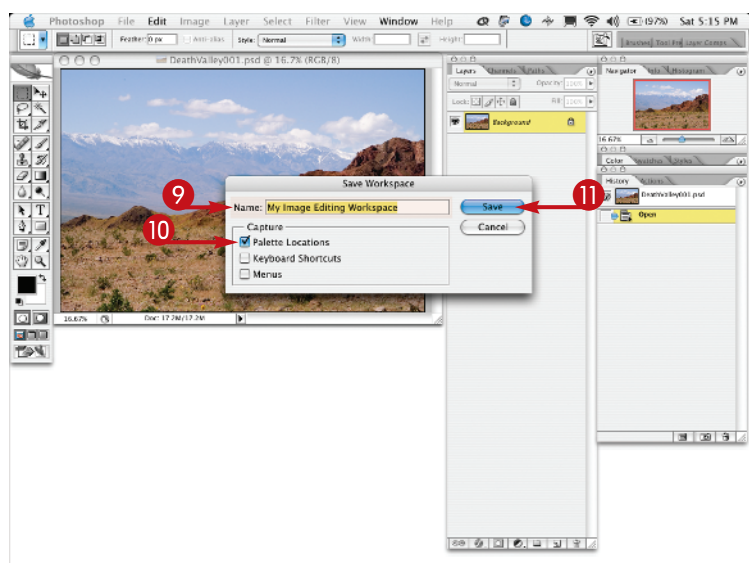
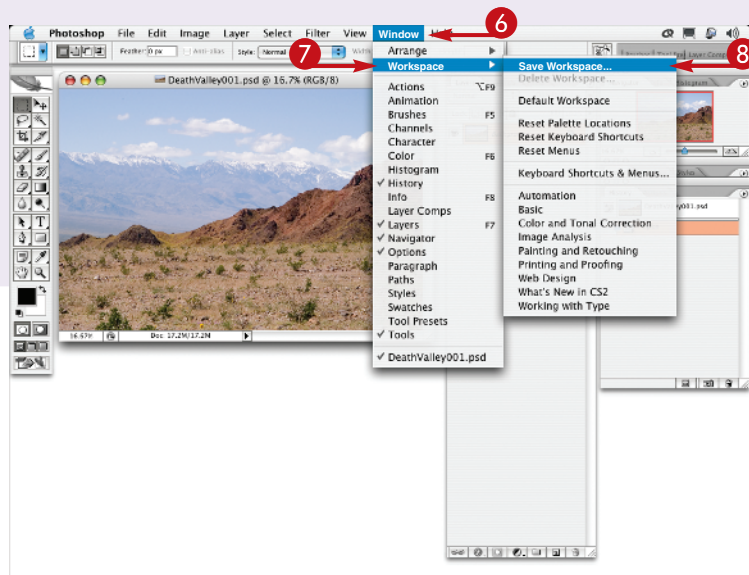
- 1 Double-click the Color tab to shrink the Color palette group.
- 2 Click the History palette group title bar and drag the palette group up.
- 3 Click the Layers palette group title bar and drag the Layers palette group up and to the left.



- 4 Click the bottom extension corner of the Layers palette and drag down to extend the palette.
- 5 Click the bottom extension corner of the History palette and drag down to extend the palette.

Note: Make any other changes you like to your workspace.

- 6 Click Window.
- 7 Click Workspace.
- 8 Click Save Workspace.



A Save Workspace dialog appears.

- 9 Type a name for your workspace.
- 10 Select the Palette Locations check box to save the palette locations (☐ changes to ☒.

You can select the Keyboard Shortcuts or Menus check boxes to save any other changes you make (☐ changes to ☒.

- 11 Click Save to save your custom workspace.

TIPS

Did You Know?

You can return to the original workspace any time by clicking Window ⇨ Workspace ⇨ Default Workspace. You can also delete unused workspaces by clicking Window ⇨ Workspace ⇨ Delete Workspace and selecting the one you want to delete.

More Options!

Photoshop CS2 includes a number of predesigned workspaces for particular projects, such as Color and Tonal Correction and Painting and Retouching. Click Window ⇨ Workspace and select a workspace from the lower section of the pull-down menu.

More Options!

You can color code the menu items you use most often. Click Edit ⇨ Menus. In the dialog that appears, click the expand triangle next to a menu name. Click None, and select a color from the pull-down menu.

PERSONALIZE YOUR VIEW

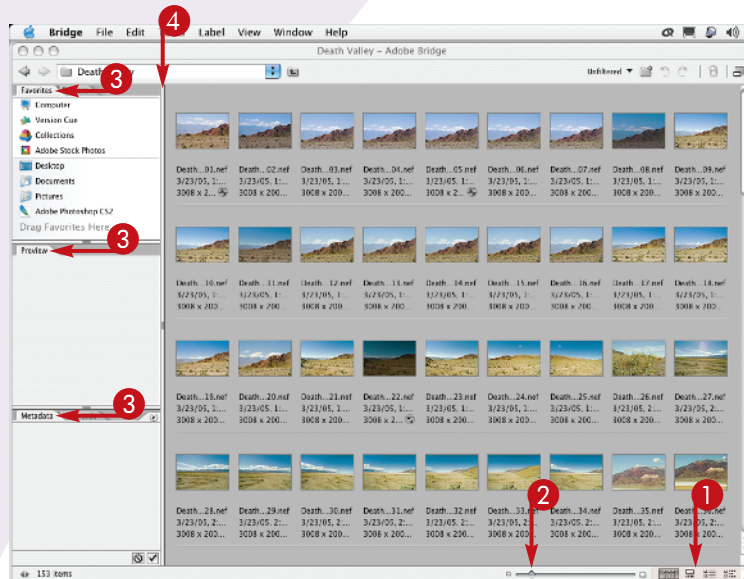
of the Bridge

In Photoshop CS2, Adobe replaced the Browser with a power browser called the Bridge. The Bridge is actually the central hub for all the Creative Suite 2 applications and functions as an application on its own.

As with the original browser, you can view and search for images in various folders with the Bridge. The Bridge shows all files and folders that are available. You can even see thumbnails of documents and files from other applications, such as Word or Acrobat files. When you double-click such a thumbnail from the Bridge, the other application launches.

The Bridge offers more automation, more ways to search and categorize your files, new options for adding information, and many ways to view your images. You can now customize and save your Bridge workspace. Searching and reviewing your images is not only more efficient, but more fun.

You can launch the Bridge by choosing Browse from the File menu, by clicking the Go to Bridge icon in the Options bar, or by using the keyboard shortcut **⌘-Option-O** (Ctrl+Alt+O). The default workspace appears with information palettes on the left and thumbnails on the right.



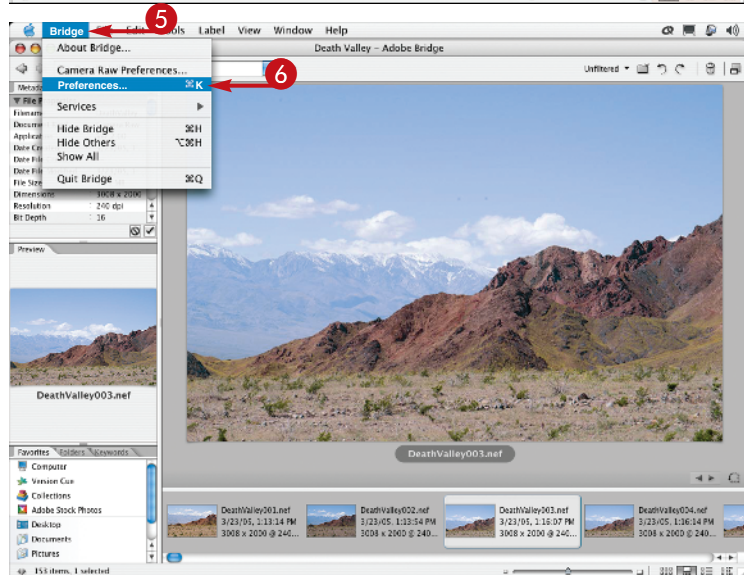
- 1 Click one of the four view icons.

The preview window changes from Thumbnails view to Filmstrip view, Details view, or Versions view.

- 2 Click and drag the thumbnail size slider to select the preferred size of the thumbnails.

- 3 Click and drag the information palettes to your preferred location or stack them into one area.

- 4 Click and drag the separator bar to enlarge or reduce the thumbnail window.

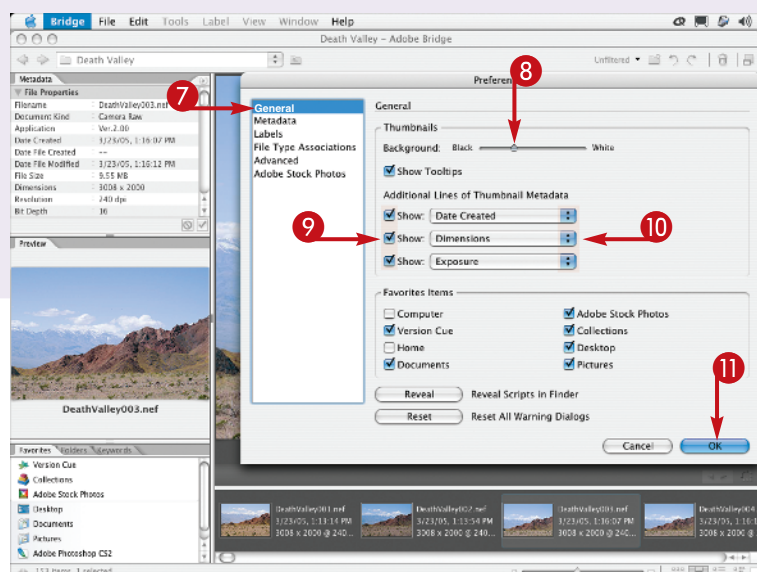


- 5 Click Bridge (Edit)

- 6 Click Preferences.

#4

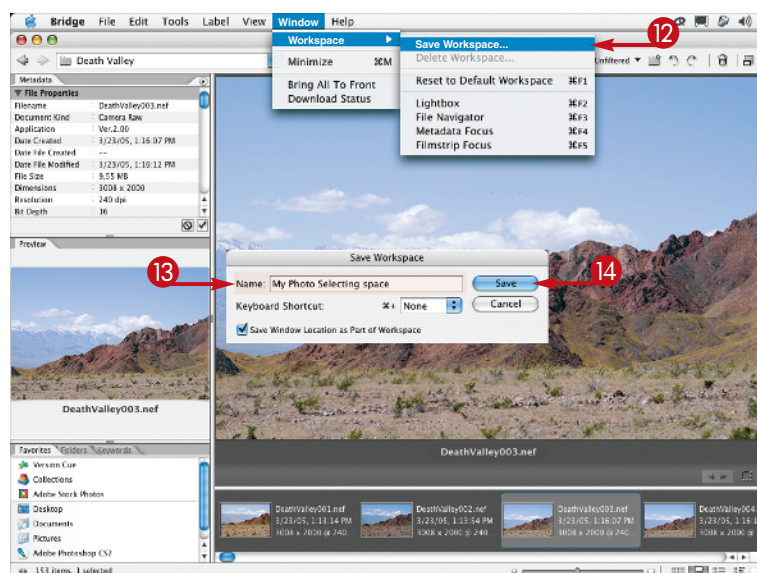
DIFFICULTY LEVEL



The Bridge Preferences dialog appears.

- 7 Click General.
- 8 Click and drag the Background slider to select the background viewing color.
- 9 Select the check boxes to show the Thumbnail Metadata you want to add (☐ changes to ☑).
- 10 Click the up-down arrow and select the type of information you want to display.
- 11 Click OK.

The color behind the thumbnails changes from white to gray to black.



- 12 Click Window ⇨ Workspace ⇨ Save Workspace.

A Save Workspace dialog appears.

- 13 Type a name for your workspace.
- 14 Click Save to save your custom workspace.

You can now find your customized Bridge workspace by clicking Window ⇨ Workspace.

TIPS

Did You Know?

You can sort your photos in different ways. The default is set to Ascending Order, but you can choose a different order. Click the View menu, select Sort, and then choose from the list of options for sorting.

More Options!

You can assign a keyboard shortcut to your customized view of the Bridge. When you are in the Save Workspace dialog, click the up-down arrow next to the word None. Select one of the Keyboard shortcuts listed and click Save.

Try This!

You can hide all the information palettes in the panels on the left and enlarge your thumbnail window even more. Each time you click the double-headed arrow in the bottom-left corner of the Bridge, the panels toggle on and off.

CREATE A KEYBOARD SHORTCUT

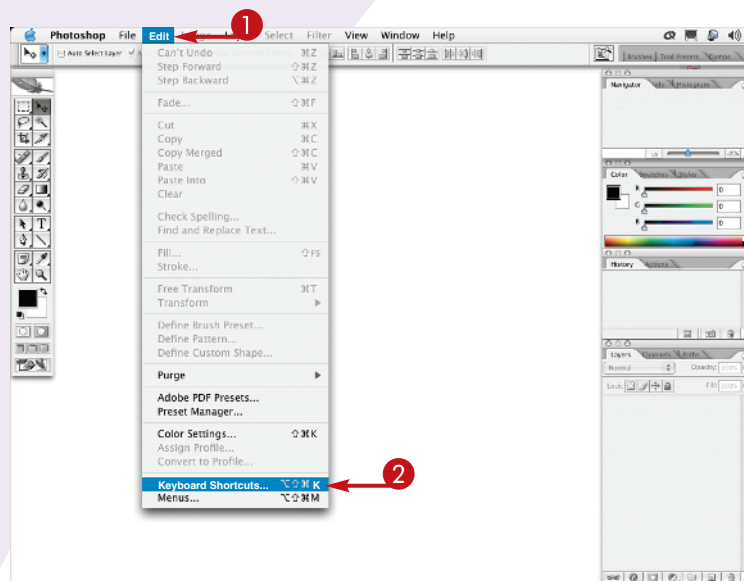
for a favorite filter

Photoshop includes a number of keyboard shortcuts for a variety of tasks. You can work more efficiently if you use shortcuts for the tools you use most often. Many of the tools in the toolbar already have keyboard shortcuts assigned. Still, you may find yourself going to the menu to select an item, such as the Gaussian Blur filter, so often that a personalized keyboard shortcut is very useful and a huge timesaver.

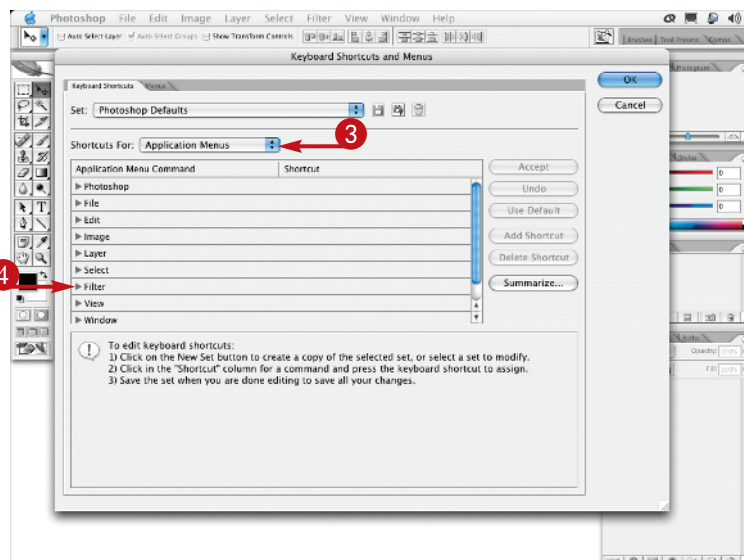
You can easily create your own custom keyboard shortcuts to fit your workflow. You can even change

the ones that Photoshop has already assigned to something you can remember better. If the Keyboard Shortcut you choose is already in use, Photoshop warns you when you type the text. You can change Photoshop's default shortcuts or you can try a different set of keystrokes that are not already assigned.

Learning and using custom keyboard shortcuts can streamline your workflow, leaving you more time for designing and photo editing.



- 1 Click Edit.
- 2 Click Keyboard Shortcuts.

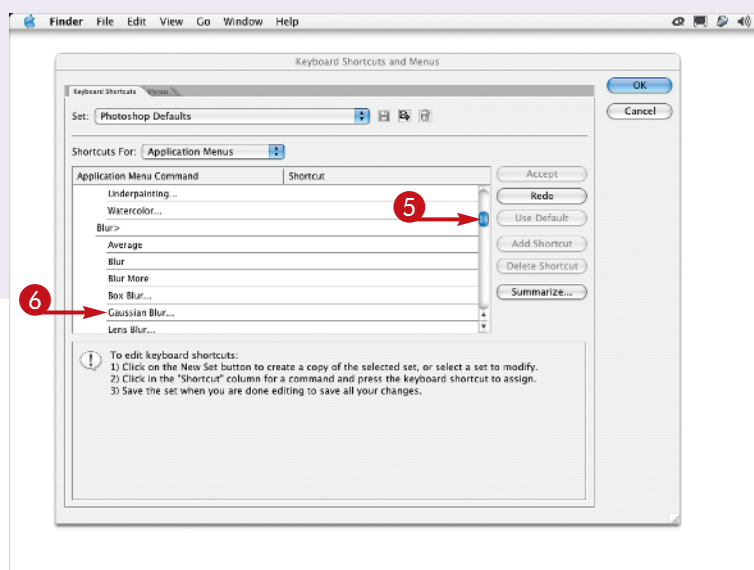


The Keyboard Shortcuts and Menus dialog appears.

- 3 Click the Shortcuts For up-down arrow and select Application Menus.
- 4 Click the Filter expand arrow.

The filters are listed along with any existing keyboard shortcuts.

- 5 Scroll to Blur.
- 6 Click Gaussian Blur.

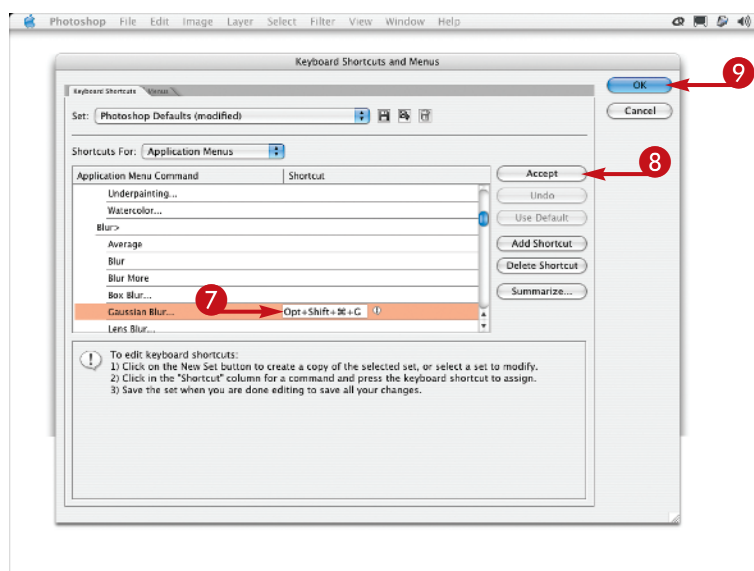


The filter is highlighted and an empty data field appears under the Shortcut column.

- 7 Type your shortcut in the data field.
- 8 Click Accept.

The Photoshop Defaults are modified to include your shortcut.

- 9 Click OK to finish adding your custom keyboard shortcut.



TIPS

Did You Know?

The Keyboard Shortcuts and Menus dialog is found under both the Edit menu and the Window ⇧ Workspace menu. You can also access the Keyboard Shortcuts and Menus dialog by using a keyboard shortcut. Press ⌘-Shift-Option-K (Ctrl+Shift+Alt+K).

Try This!

You can save a list of the default Photoshop keyboard shortcuts or your customized shortcuts. Click Summarize in the Keyboard Shortcuts and Menus dialog and save the file as Photoshop Defaults.htm. Open the file and print the list for reference.

More Options!

Click the Shortcuts For up-down arrow to select Palette Menus or Tools. Then click the expand arrow next to the palette name or tool and type your shortcut. You can even save a keyboard shortcut set with a custom workspace!

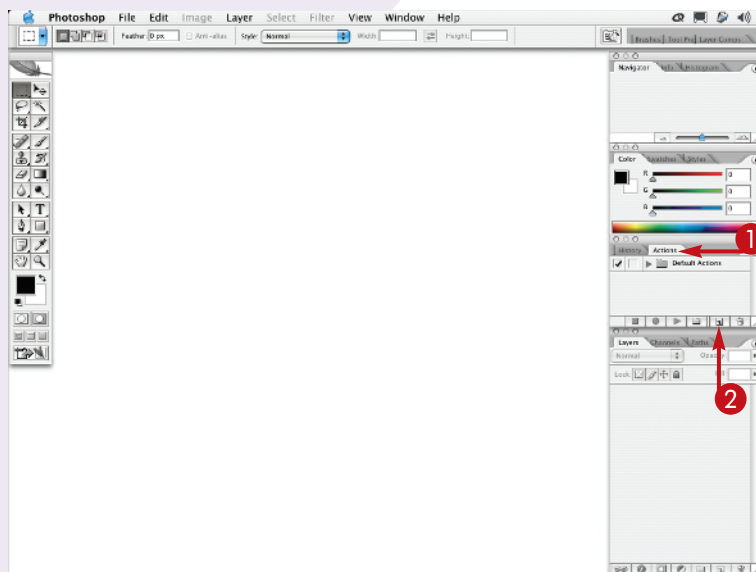
CREATE AN ACTION

to increase your efficiency

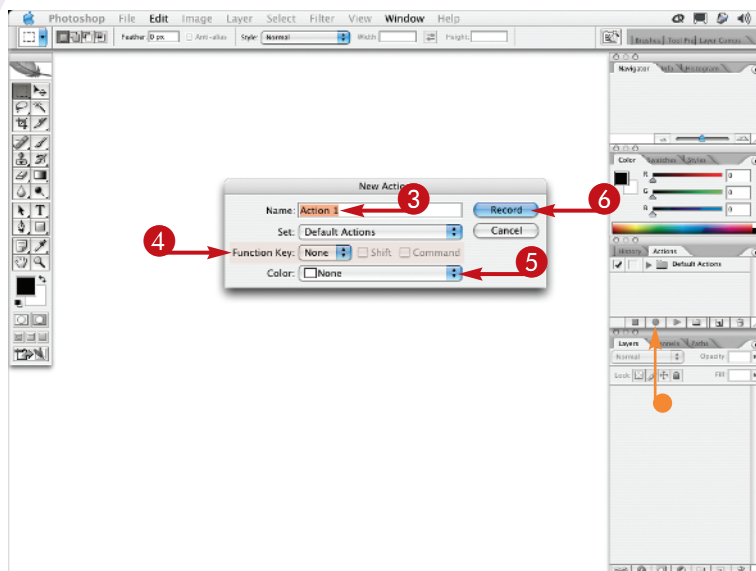
Performing repeated steps is boring and time consuming. That is why Adobe created Actions. An Action is a series of commands that you can apply to an image with one click of the mouse. Unlike a keyboard shortcut, which can only open a command, an action can open a command, apply changes to an image, step through another command, apply it, and even save a file in a particular way. You can create your own actions for steps that you do repeatedly, save the actions, and add them to the Actions palette.

To create an action, you first record a sequence of steps. You then name and save your new action in the Actions palette. The next time you need to apply the same steps to an image, you play the action and Photoshop automatically applies the series of operations to the open file or even to an entire folder of files.

Actions are easy to create and they can help you automate your work for repetitive tasks leaving you more time to work on creative projects.



- 1 Click the Actions tab in the palette.
- 2 Click the New Action icon.

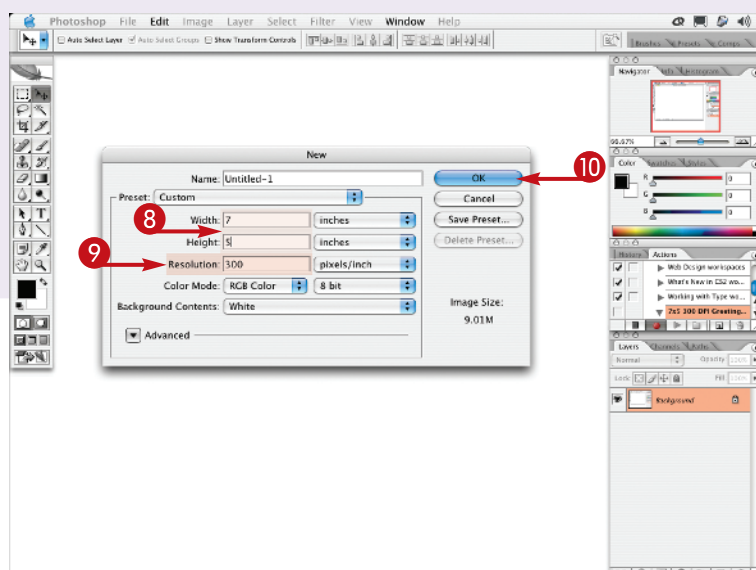


The New Action dialog appears.

- 3 Type the name of your action in the name field.
 - 4 Click the Function Key up-down arrow and select a keyboard shortcut.
 - 5 Click the Color up-down arrow and select a color for the action.
 - 6 Click Record.
- The record button in the Actions palette turns red.

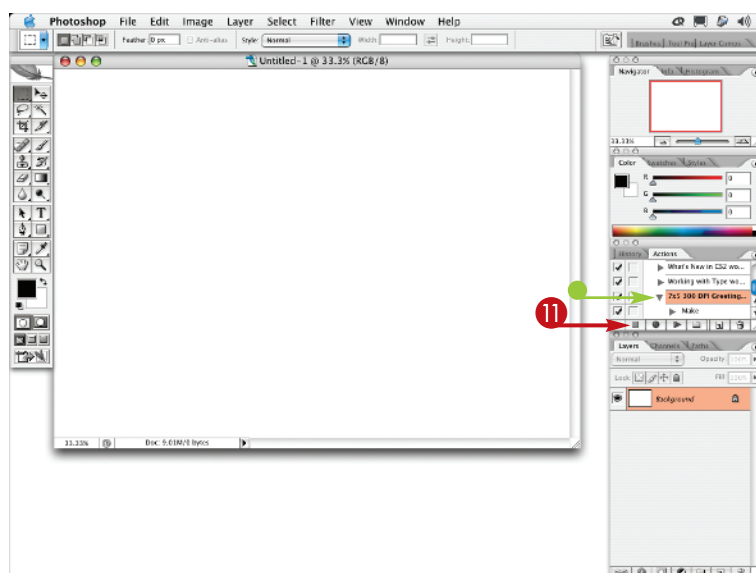
Note: The following action is to open a new 7" x 5" document at 300 pixels/inch for a greeting card.

- 7 Press ⌘-N (Ctrl+N) to open a new file.



The New file dialog appears.

- 8 Type your specific dimensions in the Width and Height fields.
- 9 Type **300**, or your desired resolution, in the Resolution field.
- 10 Click OK.



A new untitled document appears.

- 11 Click the Stop Recording button in the Actions palette.
- Your custom action is now recorded and is listed in the Actions palette.

You can test it by clicking the keyboard shortcut you assigned.

An untitled, 5" x 7", 300 ppi document appears.

TIPS

More Options!

You can apply the same action to any open files or a folder of files. In the menu, click **File ⇨ Automate ⇨ Batch**. You can also apply an action to a group of images from the Bridge by clicking **Tools ⇨ Photoshop ⇨ Batch**.

Try This!

You can reduce some of the clutter in the Actions palette by setting it to Button mode. Click the Actions palette's expand arrow and select **Button Mode**. Your actions change to color-coded buttons, making them much easier to find.

Did You Know?

When you first open Photoshop, the Actions palette only includes the Default set for setting up workspaces. You can find other prerecorded actions by clicking the Actions palette's expand arrow. Click any sets such as **Frames**, **Image Effects**, and so on, to load these.

DESIGN A CUSTOMIZED BRUSH

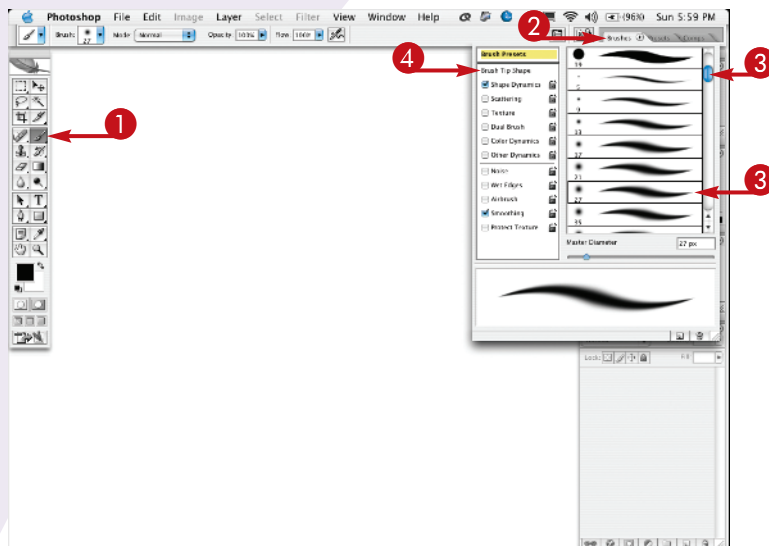
with your settings

Whether you retouch photographs, design brochures, or paint from scratch, you will use the brush tools many times and in many ways. Selecting the Brush tool from the toolbar opens a variety of brushes in the pull-down menu on the Options bar.

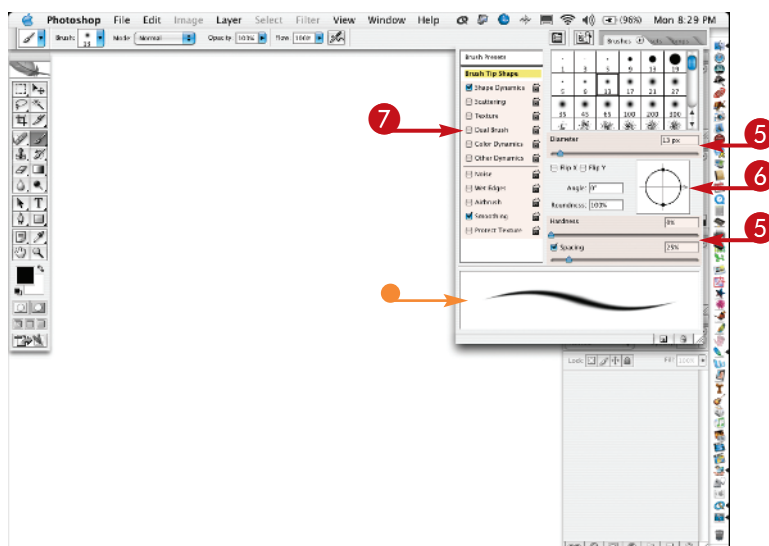
You can modify the size, roundness, or other attributes of any of the existing brushes to suit your drawing style or your image. You can then save the modified brush as your own custom brush so it is ready to use for your next design.

A number of other tools also have modifiable brush options, including the Pencil tool, the Eraser tool, the Clone Stamp tool, the Pattern Stamp tool, the History Brush, the Art History Brush, the Blur tool, the Sharpen tool, the Smudge tool, the Dodge tool, the Burn tool, and the Sponge tool.

Customizing brush tools for your projects is a timesaving technique, and it is fun. You may find yourself experimenting with all types of brushes.

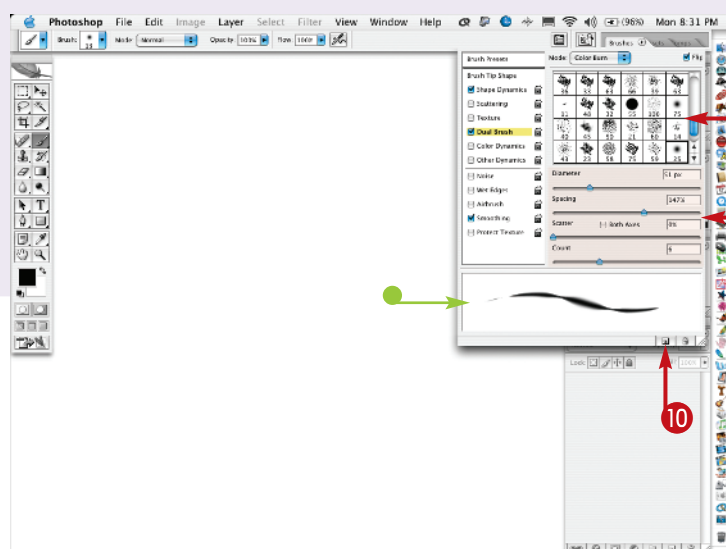


- 1 Click the Brush tool.
- 2 Click the Brushes tab to open the floating palette.
- 3 Scroll and click one of the preset brushes.
- 4 Click Brush Tip Shape.



The shape choices are now visible.

- 5 Click and drag any of the sliders to change the size and the look.
- 6 Drag the black handles and gray arrow to alter the roundness and brush angle.
- 7 Watch the preview window to see the brushstroke change.
- 7 Click the name of another attribute, such as Dual Brush.



The window changes to display new settings.

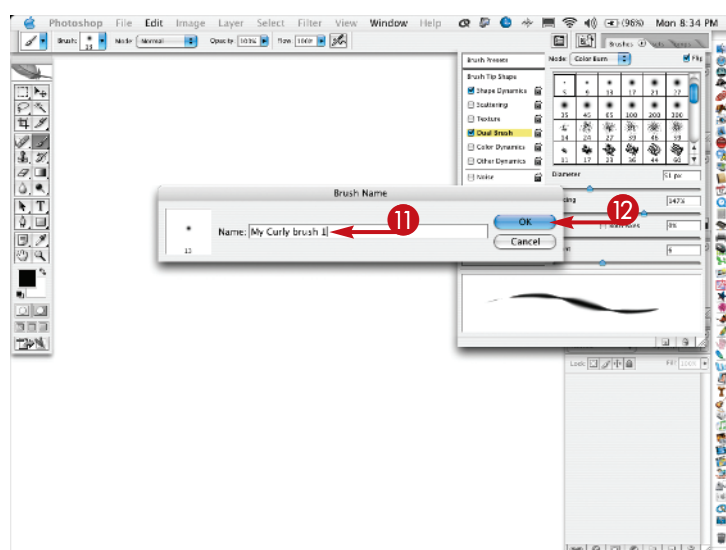
8 Click and drag any of the sliders to change the size and the look.

9 Click another selection in the window.

Watch the preview window to see the brushstroke change more.

10 Click the New Brush icon at the bottom of the palette.

A Brush Name dialog appears.



11 Type a name for your brush in the Name field.

12 Click OK.

Your customized brush is stored with the Photoshop CS2 preferences.

TIPS

Caution!

To avoid losing custom brushes if you reset Photoshop's preferences, you must save your custom brushes as part of a Brushes.abr file. Click the Brushes palette down-arrow and select Save Brushes. Name the file with the extension suffix .abr and then click Save.

Did You Know?

Photoshop CS2 includes many different brush files. You can load these brushes from the pull-down menu on the Brushes palette, or from the brush options pull-down menu in the Options bar. The brush files are listed at the bottom of these menus!

More Options!

You can choose to see the brushes listed by name rather than the stroke thumbnail. Click the expand-arrow on the Brushes tab and choose text only. You can also choose a different-sized thumbnail view as well as different-sized list views.

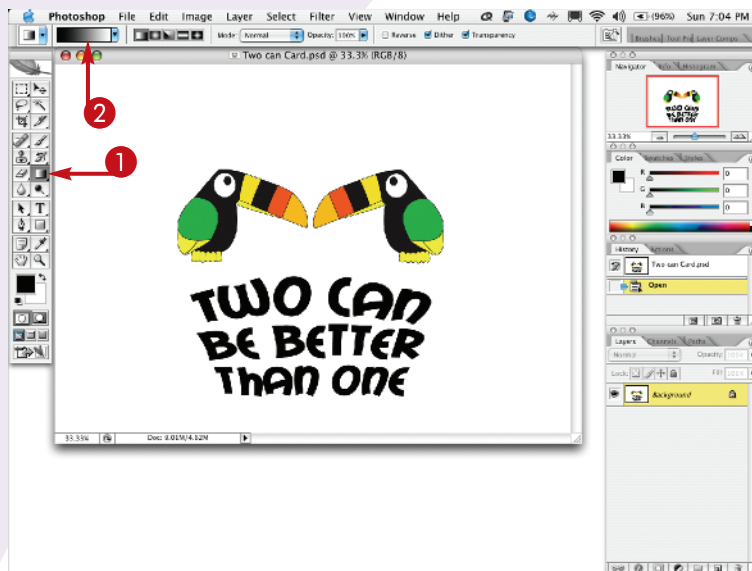
MAKE A SPECIAL GRADIENT

to suit your design

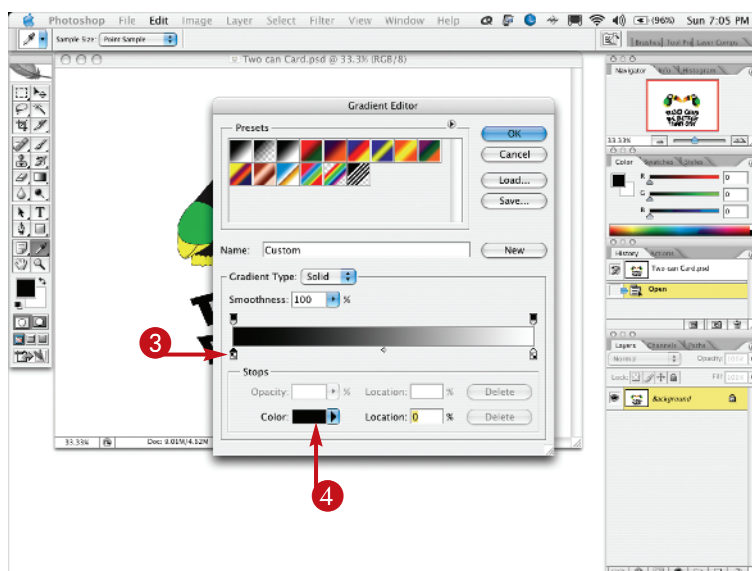
The Gradient tool helps you blend multiple colors as you fill an area in an image. You can use the Gradient tool in many ways, such as by itself to fill text with soft gradations of color, to fill backgrounds with a gradient, or in combination with layers and masks. Gradients are often used when making composite images. Photoshop includes default gradient color sets and has other gradient sets listed in the pull-down menu in the Options bar. You can also create your own gradient by sampling colors from areas in your image or choosing different colors altogether.

You can add intermediate colors and design a blend among multiple colors in any order you want. You can even design gradients that fade from any color to transparent.

You can also choose a style for the gradient, such as linear, radial, angled, reflected, or diamond. You can customize the gradients from the Gradient Editor. Start with an existing gradient and modify the colors, the colors stops, and other variations in the dialog. The possibilities are almost endless!

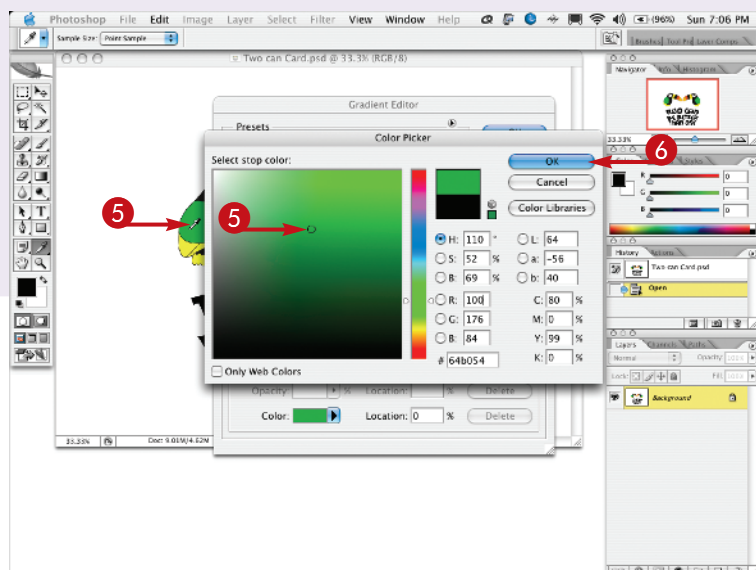


- 1 Click the Gradient tool.
- 2 Click inside the gradient thumbnail in the Options bar.



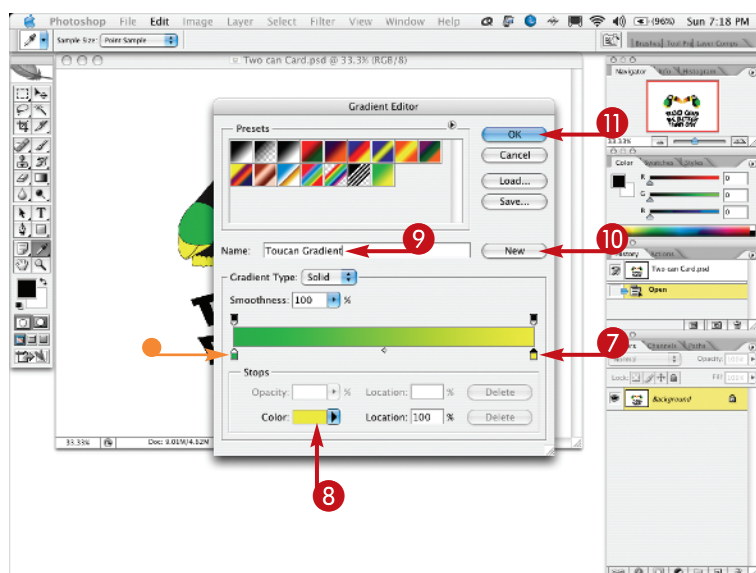
The Gradient Editor dialog appears.

- 3 Click the left Color Stop under the gradient bar to select it.
- 4 Click the Color thumbnail to choose a new color.



The Color Picker dialog appears.

- 5 Select a color from the dialog or move the cursor over the image to select a color.
- 6 Click OK.



- The selected color fills the left Color Stop in the Gradient Editor.
- 7 Click the right Color Stop under the gradient bar to select it.
- 8 Repeat Steps 4 to 6 to select the colors for the right Color Stop.
- 9 Type a name for your new gradient in the Name field.
- 10 Click New.
- The custom gradient appears in the presets.
- 11 Click OK.

TIPS

Caution!

You must save your custom gradients in a presets library to avoid losing them when you reset Photoshop's preferences. Click Save in the Gradient Editor dialog or choose Save Gradients from the pull-down menu on the Gradient Picker. Type a name for your gradient library with the extension suffix .grd. Click Save and your gradients are saved in Photoshop's Presets.

More Options!

You can duplicate any of the Color Stops to vary your custom gradient. Press Option (Alt) and drag the first Color Stop to another location. You can even drag and jump a new Color Stop over other Color Stops as long as you are pressing Option (Alt). To remove a Color Stop, click on it and drag straight down.

CALIBRATE AND PROFILE

your monitor for better editing

You adjust colors in Photoshop based on what you see on the screen. Because each monitor shows color differently, you must calibrate and profile it to make sure the colors are displayed as accurately as possible.

Calibration is the process of setting your monitor to an established color standard. *Profiling* is the process of creating an International Color Consortium (ICC) profile, a description of how your monitor reproduces color.

Macintosh system preferences include a display calibration tool. On Windows, Photoshop CS2 installs a Adobe gamma utility. Both of these software-only

methods are subjective, relying on the room lighting and the person viewing the screen. The best way to get your monitor to display colors within an accurate range is with a hardware calibration device called a colorimeter. A spectrophotometer offers even greater accuracy.

GretagMacbeth, X-Rite, and ColorVision all make affordable colorimeters. Using a colorimeter or spectrophotometer, such as GretagMacbeth's Eye-One Display or Eye-One Pro, is easy because the hardware and software combination do all the work.

Install the software, launch it, plug the device into a USB port, and follow the on-screen instructions.



- 1 Click the monitor image.
- 2 Click Easy.
- 3 Click the Forward icon.



The screen changes to the next step.

- 4 Click to select your monitor type.
- 5 Click the Forward icon.

After the screen changes, follow the instructions asking you to set your Eye-One Display on a black surface and then click Calibrate.

- 6 Click the Forward icon to continue.

The screen goes to the next step.

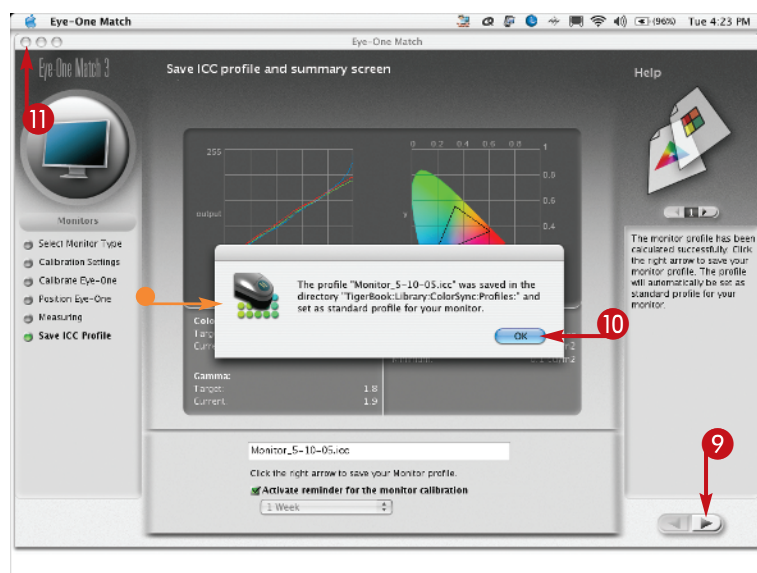


7 Place the Eye-One unit on the monitor as the image shows.

8 Click the Forward icon.

The screen goes black and then a box appears under the colorimeter on the screen.

After the box fills with white, then black, and then colors, the device automatically measures the colors.



A new screen appears showing the name of the monitor profile created by the device.

9 Click the Forward icon.

• A dialog appears telling you where the profile was saved on your computer's hard drive.

10 Click OK.

11 Quit the Eye-One software application and disconnect the Eye-One Colorimeter.

TIPS

Did You Know?

As monitors age, they lose their color accuracy more quickly. You should calibrate and profile regularly. Calibrate monthly if your monitor is new. You may need to calibrate weekly if your monitor is over two years old or for some CRTs.

Important!

Clean the monitor screen with a soft cloth before you start, but never spray any cleaning liquids on your monitor. If you have a CRT monitor, let it warm up for 30 minutes before you calibrate and create a profile.

More Options!

GretagMacbeth's software keeps a help file open in a column along the right side of the screen. You can increase your understanding of color calibration and read an explanation of each step as it is performed by clicking the arrow above the column.

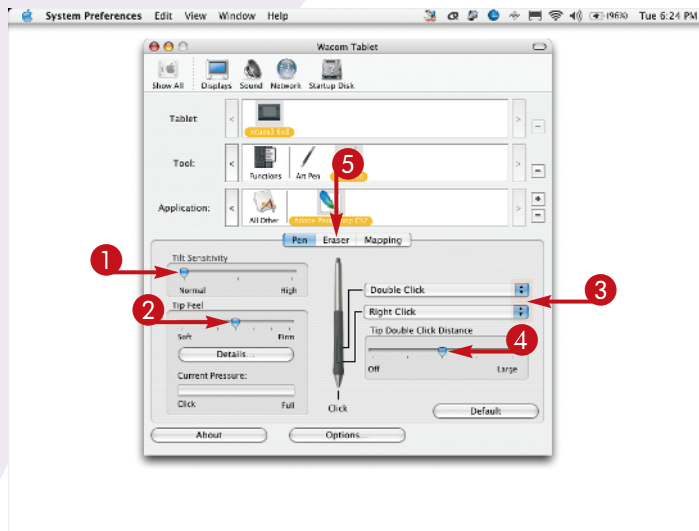
TURN ON THE FULL POWER OF PHOTOSHOP

with a digitizing tablet

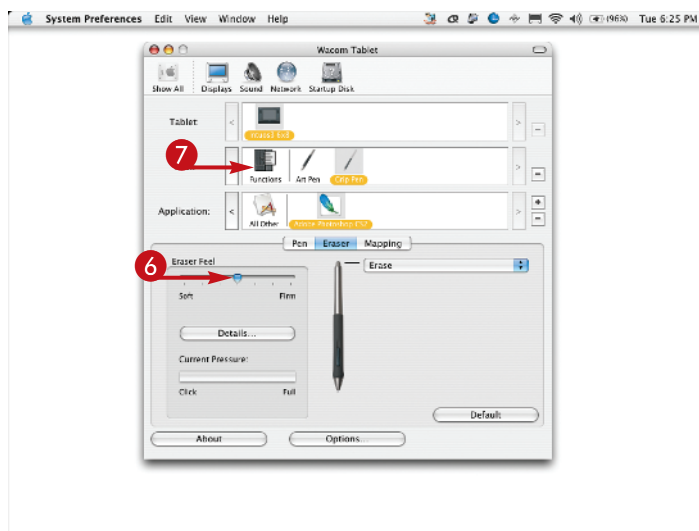
Using a mouse as an input device may work for placing insertion points in text or dragging a rectangular selection in Photoshop, but using a Brush tool or selecting specific areas with a mouse is similar to writing your name with a bar of soap — clunky and inaccurate. Using a pressure-sensitive digitizing tablet and stylus, such as the Wacom Intuos 3, instead of a mouse allows you to edit images with greater comfort and control. Every point on the tablet has a matching point on the screen. You do not waste time scooting the mouse around so you become more productive.

Using a tablet and stylus, you have access to many Photoshop tools that are only available when a tablet is connected to the computer. You can easily make precise selections, create blended composite images, and even paint digitally as you would with a traditional paintbrush on paper.

The key to using a tablet and stylus and turning on the full power of Photoshop is to start by setting the tablet preferences located in the System Preferences or Control Panels.

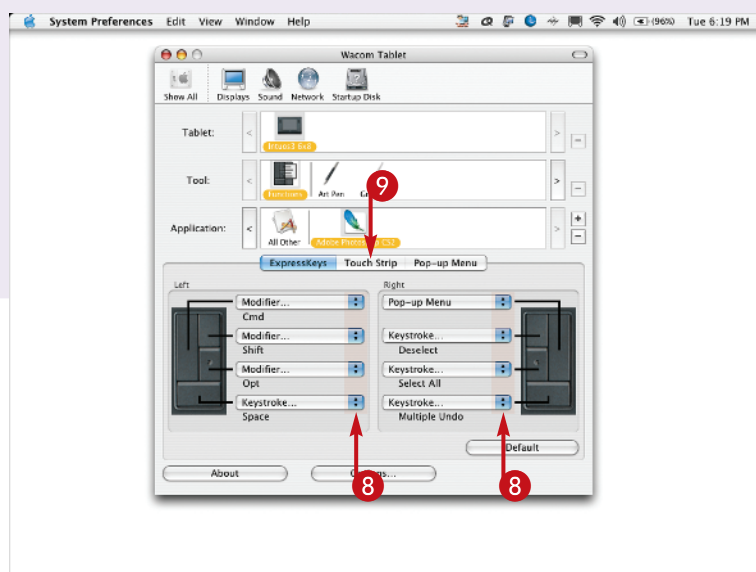


- 1 Click and drag the Tilt Sensitivity slider to the right for greater tilt response.
- 2 Drag the Tip Feel slider for a softer or firmer touch.
- 3 Click the up-down arrow and select different keystrokes for the rocker switch.
- 4 Drag the Tip Double Click Distance slider to reduce or increase the sensitivity.
- 5 Click the Eraser tab.



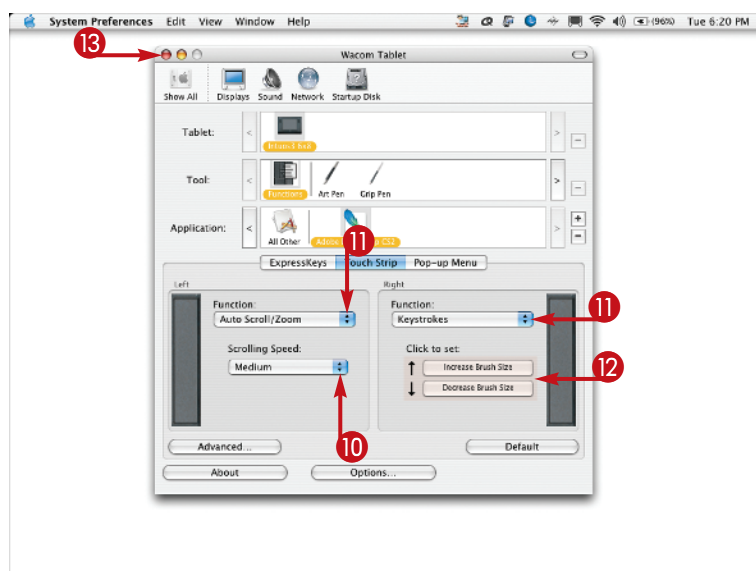
The screen changes to the Eraser preferences.

- 6 Click and drag the Eraser Feel slider for softer or firmer eraser pressure.
- 7 Click the Functions Tool to customize the tablet keys.



The screen changes to the ExpressKeys preferences.

- 8 Click the up-down arrow and change the settings for the tablet keys.
- 9 Click the Touch Strip tab.



The screen changes to the Touch Strip preferences.

- 10 Click the up-down arrow to change the Scrolling Speed.
- 11 Click the Function up-down arrow and select different functions.
- 12 Click in the Click to set boxes.

In the dialog that appears, type your keystroke preferences in the Keys data field and click OK.

- 13 Click the Close button.

You custom settings for the Wacom Intuos 3 are saved in the preferences.

TIPS

Try This!

You can set your tablet and stylus preferences for all applications or select specific settings for each application you use. If you have more than one stylus, you can even set different settings for each one with each application.

Did you know?

The Wacom Intuos 3 is considered the most responsive tablet and stylus on the market. Not only does working with the Wacom stylus feel like any pen or pencil, the added convenience of the ExpressKeys and Touch Strip help you become more productive.

Did you know?

Over 20 Photoshop tools are specifically designed for use with a pressure sensitive tablet and stylus. If you do not have a tablet attached to your computer, a warning sign appears for many of the settings in the Brushes palette.