

Chapter

1

Introduction to Microsoft Exchange

COPYRIGHTED MATERIAL



Microsoft Exchange 2000 Server is the server portion of a rather powerful client/server enterprise messaging system. “Great,” you say, “but what does that mean?” This chapter introduces the capabilities of Exchange 2000 Server and sets the stage for the rest of the book by dissecting the phrase “client/server enterprise messaging system.” First, this chapter introduces messaging systems—what they are and what they are used for on modern networks. Second, it examines several different computing models and shows how Exchange Server fits into the client/server model. Third, it answers the question “what does it take to be an enterprise-level system?” Finally, this chapter discusses the major industry standards on which Microsoft Exchange is based.

Messaging Systems

An enterprise needs information in order to get work done. For this reason, electronic messaging has become a mission-critical function in most organizations. While electronic mail (*e-mail*) is still the core ingredient of any messaging system, other applications are becoming more popular. Messaging can be divided into the following categories:

- E-mail
- Groupware
- Other messaging applications

Each of these categories, and how Exchange addresses them, are briefly discussed in the following text.



Due to the multiple functionality of some of the client programs, a single program could fit into more than one of the categories listed. For example, Microsoft Outlook includes e-mail functions and groupware functions like group scheduling.

E-Mail

An e-mail program allows a user to create, send, read, store, and manipulate electronic messages and attachments. E-mail is an example of *push-style* communication, meaning that the sender initiates the communication. Because of the importance of e-mail in the overall communication of organizations, e-mail client programs have evolved from merely creating and sending text messages into multifeatured programs.

Microsoft Exchange 2000 Server ships with the Outlook 2000 client application for Microsoft Windows 9x/NT/2000 and Outlook 98 client application for the Macintosh. Although older clients, such as Outlook 98 for Windows and Microsoft Exchange Client, will connect to an Exchange 2000 Server just fine, they are neither shipped with the product nor supported by Microsoft any longer.

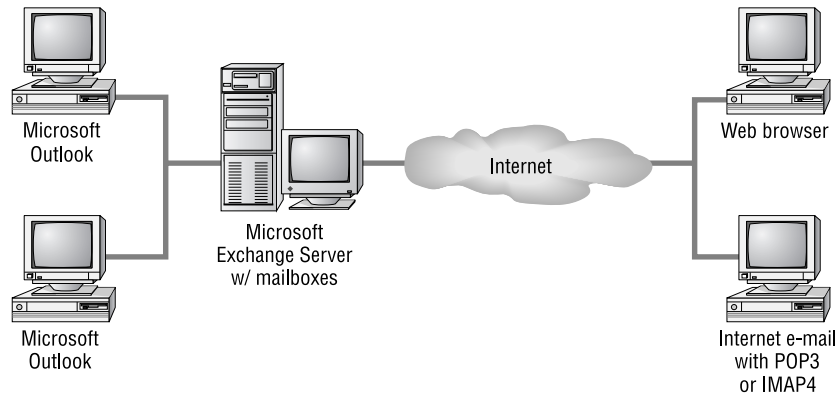
Microsoft also has server components that enable standard Internet clients to be Exchange e-mail clients. Those Internet clients include those that follow:

- Web browsers through the Outlook Web Access component
- Internet e-mail programs with the Post Office Protocol, version 3 (POP3)
- Internet e-mail programs with Internet Message Access Protocol, version 4 (IMAP4) support

Figure 1.1 illustrates these e-mail client applications.

4 Chapter 1 • Introduction to Microsoft Exchange

FIGURE 1.1 E-mail clients to Exchange Server



Microsoft Outlook 2000

Microsoft Outlook 2000 is an e-mail client that ships with Exchange 2000 Server and Microsoft Office 2000 as a stand-alone product. Outlook is referred to as a desktop information manager because it is more than just an e-mail client. It also performs such tasks as calendaring, scheduling, and task and contact management. Outlook is intended to be a central program for management of data of all types.

Microsoft Outlook includes a vast feature set, some of which are listed here:

Universal inbox (mailbox) This central storage area can hold not only e-mail messages, but other data such as word processing documents, spreadsheet files, faxes, electronic forms, even voicemail files.



Two terms refer to a user's mailbox: mailbox and inbox. The most common usage in this book will be mailbox. This is our primary term for two reasons. One, Microsoft divides a mailbox into folders, one of which is labeled the inbox. Using the term inbox for only the folder helps prevent confusion. The other reason is that the server-based storage area for a user's messages is also called a mailbox.

Hierarchical data storage Outlook organizes the client's *mailbox* into four default folders: Inbox, Outbox, Deleted Items, and Sent Items. Users

can also create their own folders, thereby personalizing the organization of their data.

Customized views Users have the ability to determine what and how data is presented to them on their screens. Messages can be ordered by sender, date, priority, subject, and other properties.

Search tool Users can search and retrieve messages in their mailboxes using a variety of search criteria, such as sender, date, and subject.

Rich-text message content Historically, most e-mail content was simple text. Outlook enables the creation of rich-text message content that can include multiple fonts, sizes, colors, alignments, and other formatting controls.

Microsoft Word as message editor Even though Outlook includes a rich message editor, it can also be configured to use Microsoft Word as its message editor. This ability provides access to many of the standard Word features, such as tables, embedded pictures, and linked objects, right inside the e-mail message.

Compound messages and drag-and-drop editing Outlook is *OLE 2 (Object Linking and Embedding)* compliant and, therefore, allows the creation of compound documents. For example, a user could drag and drop a group of cells from a spreadsheet into Outlook.

Secure messages *Digital signatures* and message *encryption* are advanced security features built into Outlook.

Offline access Because more and more employees spend part of their work day outside of the office, special features allow users to create folders on their local computers that synchronize with folders on an Exchange server when the local computer is connected to a network. When the computer is not connected, the folders that have been synchronized are available and users can create, work with, and send messages. Sent messages are placed in an outbox and are actually delivered the next time the offline folders are synchronized.

Delegate access Some users need to allow other users to access their mailbox. For example, a manager might want a secretary to read meeting request messages in order to handle the manager's schedule. In many mail systems, this would be accomplished by having the secretary log on as the manager. This creates an obvious security problem. Microsoft solves this

6 Chapter 1 • Introduction to Microsoft Exchange

problem by allowing the manager to grant the secretary limited permission to access the manager's mailbox. This permission can be restricted to certain folders. The secretary can also be granted permission to send messages on behalf of the manager or even send messages as the manager, using the Send As feature.

Voting Outlook supports the ability to add voting buttons in the header of a mail message and to collect the responses. This allows surveys to be conducted through e-mail.

AutoCreate Outlook can automatically convert one Outlook item into another. For example, a mail message may contain an action item that the user can simply drag and drop into the Task folder. Outlook would automatically convert the mail message into a task.

Recover deleted items Users of Outlook can recover deleted items in a mailbox or public folder for a certain amount of time determined by the Exchange administrator.

Expanded storage capacity Users can store up to 64,000 items in their personal folder or an offline folder.

These are just some of the e-mail features of Microsoft Outlook. This client program and others are discussed further in Chapter 6.

Web Browsers

Exchange 2000 Server includes a component named *Outlook Web Access (OWA)* that runs in conjunction with Microsoft *Internet Information Server (IIS)*. OWA enables Web browsers to access Exchange resources such as mailboxes and public folders. Any standard Web browser can be used, such as Microsoft Internet Explorer or Netscape Navigator, though only Internet Explorer 5 or later supports some of the advanced features that OWA provides. This Exchange functionality permits users of other operating system platforms, such as Unix or IBM's OS/2, to also be Exchange clients. Chapter 6 covers the Exchange components required for Web browser clients.

Internet E-Mail Programs with POP3

Exchange has built-in support for the *Post Office Protocol, version 3 (POP3)*. POP enables mail clients to retrieve mail messages stored on a remote mail server. Exchange's support for this protocol allows Internet e-mail programs that support

POP3 to access their Exchange mailbox and download their messages. Chapter 6 covers POP3 in the Exchange environment.

Internet E-Mail Programs with IMAP4

Exchange also has built-in support for the *Internet Message Access Protocol, version 4 (IMAP4)*. IMAP is similar to POP in that it is a mail retrieval protocol. But IMAP has more features than POP, such as the ability to select the messages to download rather than having to download all new messages. Chapter 6 provides further details on IMAP4.

Groupware

A simple definition of *groupware* is any application (the ware in groupware) that allows groups to store and share information. That is a very broad definition, and one that includes applications like e-mail and electronic forms. And indeed, as you will see, these applications are important ingredients in groupware. However, the emphasis in groupware is collaboration—not merely sending an item, but enabling many people to cooperatively use that item. Microsoft Outlook incorporates many groupware functions, such as the ability to share a calendar, schedule, task list, and contact list.

Another example of groupware is folder-based applications. These applications utilize public folders. A *public folder* is a special storage area for group access. Various types of information can be contained in a public folder, such as documents, spreadsheets, graphics, e-mail messages, forms, and many other types of information. Along with storing information, a public folder can be assigned security, so that only selected users or groups can access the public folder. Other features like views and rules can also be assigned to a public folder. Using a simple folder-based application, a Sales department could place all of their sales letters in a specified public folder for the department. Only the employees in the Sales department would be given permission to access this public folder.

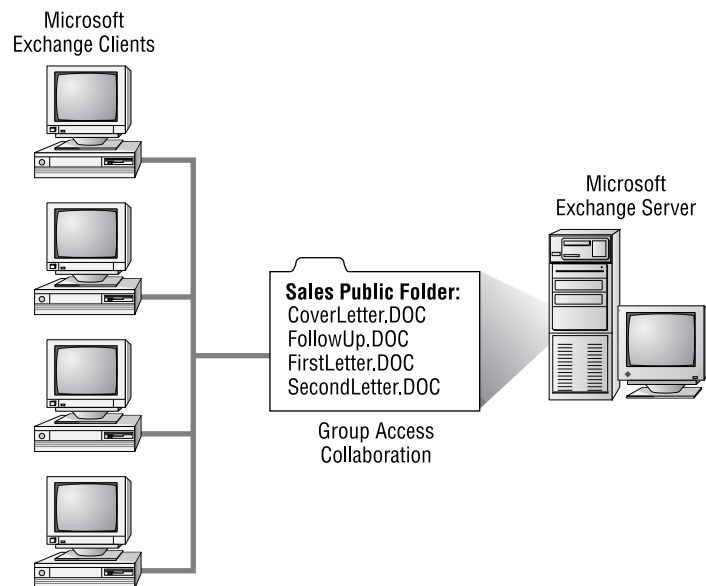
Folder-based applications can also utilize electronic forms. A specific electronic form or set of forms can be associated with a public folder. Users can fill out and post the form to the public folder. Other users can then access the public folder and view the posted information. An example of this type of application is a discussion-and-response application. A product manager could create a public folder for discussion about a product under development. That manager could also create customized electronic forms that people

8 Chapter 1 • Introduction to Microsoft Exchange

could use to enter their comments and that they could then send, through e-mail, to the public folder. The product manager and product developers could then access the public folder to read the comments. It is even possible to set up customized views of the content in the public folder in order to view only data on a specific topic. A marketing person, for example, might want to see only comments related to the possible market for the product.

Folder-based applications are examples of *pull-style* communication, because users go to the information and decide what is relevant to them. See Chapter 9 for more on the topic of public folders. Figure 1.2 illustrates folder-based applications.

FIGURE 1.2 Folder-based applications



Other groupware elements of Exchange are the Microsoft Exchange *Chat Service* and *Instant Messaging Service*. The Chat Service enables users to conduct online meetings, discussions, or collaborate on documents or projects online and in real time. The Chat Service is based on the Internet protocol *Internet Relay Chat (IRC)*. The Instant Messaging Service allows users to communicate in real time using the Microsoft Instant Messenger. Chapter 11 discusses these services.

Other Messaging Applications

Along with e-mail, electronic forms, and groupware, there are many other types of messaging applications. Exchange provides an open platform that encourages the integration of other types of applications, some of which include the following:

Exchange 2000 Conferencing Server *Microsoft Exchange 2000 Conferencing Server* is a separate product from Exchange 2000 Server that provides services that allow two or more people to communicate and collaborate as a group over the Internet or corporate intranet in real time. Specifically, Exchange 2000 Conferencing Server provides data conferencing, audio and video conferencing, and advanced schedule management. Products like Microsoft's NetMeeting act as the clients to provide video conferencing, as well as other features like whiteboard conferencing (i.e., collaborative drawing) and text-based chatting.

Workflow While Exchange includes some basic workflow capabilities, some third-party workflow solutions that work with Exchange are also available, such as icXpertFLOW from Internet Commerce Express, Inc.

Fax Fax software can be integrated with the Exchange clients so that e-mail and faxes can be sent and received from the same location, as well as share the same address book.

Paging Some paging products can enable an Exchange client to use an Exchange server to send an electronic page to another person's pager via a wireless paging service.

Voicemail There are various voicemail products that integrate with Exchange and store their messages in an Exchange mailbox.

Custom applications Through its installable file system, public folders, wide support of Internet protocols, and support of scripting, Exchange 2000 Server also serves as a wonderful platform for the creation of custom business applications.

Computing Models

Microsoft Exchange uses a client/server computing model to implement its messaging system. To better understand the client/server model, two other models are discussed briefly to provide a context for the client/server model. In all, the three models discussed in this section are:

- Mainframe computing
- Shared-file computing
- Client/server computing

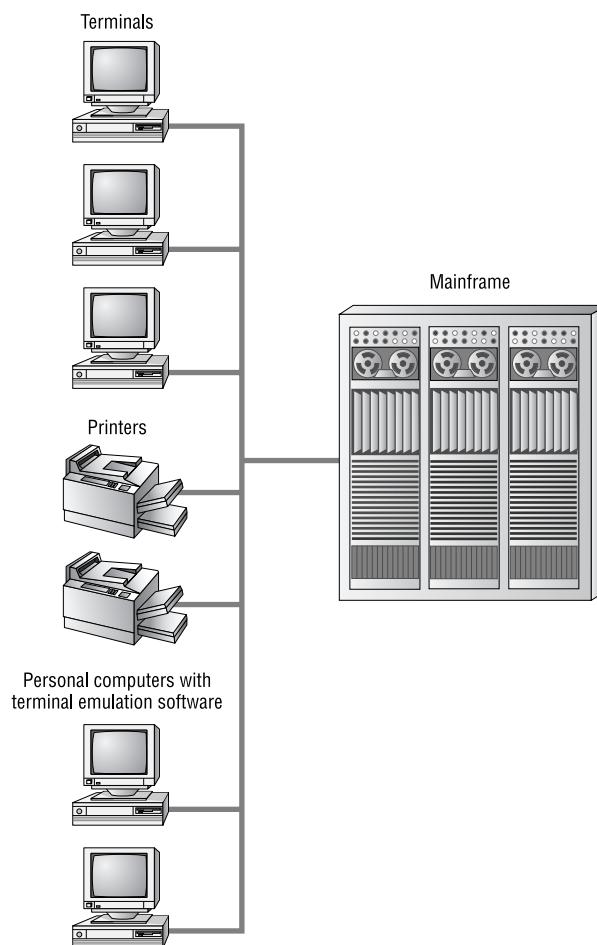
Mainframe Computing

Mainframe computing consists of a powerful host computer, such as a mainframe computer or minicomputer, and numerous input-output devices attached to the host, such as terminals, printers, and personal computers running terminal emulation software. The advantages of this architecture are its powerful, centralized computing processing, administration, and backup. These features permit a large number of users on systems built according to this model. The disadvantages are that these features incur high costs, that personal computing power and applications are not leveraged, and that most of these systems have a proprietary architecture. Examples of messaging systems that use this type of model are the IBM PROFS (Professional Office System) and OfficeVision.

Figure 1.3 illustrates the host-based computing model.

Shared-File Computing

This network computing model works in a local area network (LAN) context. At least one computer is used as a server computer to store files. Users, working on their own networked personal computers, access and share the files on the server computer. Microsoft Mail is a messaging system that uses this type of architecture.

FIGURE 1.3 Host-based computing model

Using this model, a *shared-file messaging system* has active clients and passive servers. Each mail user is assigned a mailbox. A mailbox is actually a directory on the server where mail messages are placed. The server software is passive in that its main task is to store mail messages. The client software is said to be active because it performs almost all mail activities. Along with the normal mail

12 Chapter 1 • Introduction to Microsoft Exchange

activities of creating and reading mail, the client software is also responsible for depositing mail in the correct recipient mailboxes and checking its own mailbox for new mail (this is referred to as *polling*).

This model could be compared to a postal system where people must take their outgoing mail to the post office and place it in the respective recipients' mail slots and also visit the post office to check their mail slots for any new mail. The primary duty of the post office is to store the mail. This is analogous to the shared-file messaging system in that the people (clients) are active and the post office (server) is passive.

The advantages of shared-file messaging systems include the following:

Minimal server requirements Because the server has a passive role, it does not need to run on a high-end hardware platform.

Minimal server configuration in a single-server environment Because the server is mainly a storage location, it does not need a lot of configuration.

The disadvantages of shared-file messaging systems include the following:

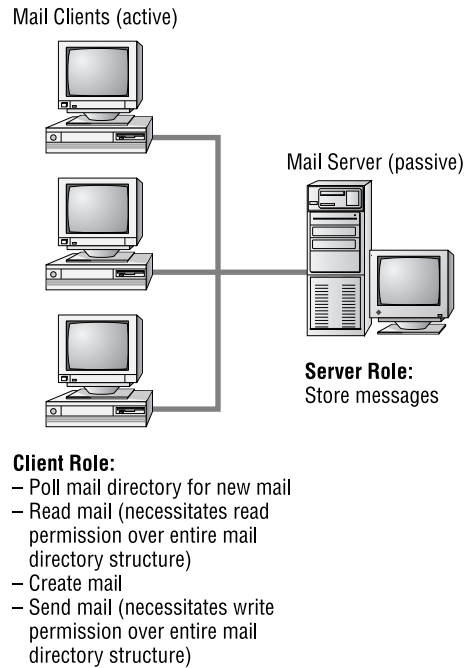
Limited security Because the client software is responsible for sending mail to a recipient's mailbox, each client must have write permissions on each mail directory. Each client must also have read permissions on the entire mail directory structure in order to read forwarded or copied messages. From a security standpoint, this is considered an excessive level of permissions.

Increased network traffic The periodic client polling of mailboxes for new mail increases network traffic.

Increased client load The active clients do almost all of the processing work.

Limited scalability These systems cannot accommodate large numbers of users due to the shared-file model. Users must access common files that can be opened by only one process at a time.

Figure 1.4 illustrates a shared-file messaging system.

FIGURE 1.4 Shared-file messaging system

Client/Server Computing

In *client/server messaging*, a task is divided between the client processes and server processes. Each side works to accomplish specific parts of the task. The two processes are usually running on separate computers and are communicating over a network. The communication is in the form of requests and replies passed back and forth through messages.

The client side includes a user's personal computer or workstation and client software. The client software provides the interface for the user to employ when manipulating data and making requests to and receiving replies from the server. The processing power to carry out those tasks is provided by the client's computer.

14 Chapter 1 • Introduction to Microsoft Exchange

The server side includes the server computer and server software. The server software receives and processes client requests, provides storage capabilities, implements security, provides for administrative functions, and performs many more duties. The server's processor, or processors, power these functions.

When this model is applied to a mail system, both the client side and the server side are active participants. Mail activities are divided between the two sides in a way that takes advantage of both parties. The client software enables users to initiate mail activities like creating, sending, reading, storing, and forwarding mail and attachments.

The server software also has an active role. Some of its tasks are implementing security, placing messages in mailboxes (as opposed to the client software doing it), notifying clients of new mail (which eliminates the need for clients to poll their mailboxes), and performing specified actions on mail, such as applying rules, rerouting messages, and many other tasks. Many of the mail activities that are initiated by the client software are actually implemented on the server. For example, when a client initiates the reading of a message, the client software sends a read request to the server where the message physically resides. The server software receives this request, processes it (for example, checks security to see if this user is permitted to read this message), and then sends the message to the client. The user can then use the client software and processor to manipulate the message (edit the message, for example). This illustrates how both sides are active.

In this model, the software running on the client machine is frequently referred to as the front-end program, while the software running on the server is referred to as the back-end program.



Exchange 2000 Server now supports front-end and back-end servers, a designation that allows an Exchange administrator to balance the various loads placed on Exchange servers among multiple computers. This concept is discussed in detail in Chapters 2 and 6. Do not confuse front- and back-end programs with front- and back-end servers.

The advantages of the client/server model include the following:

Distributed computer processing The computer processing power of both the client and server machines are utilized. The client processor

handles the end-user mail activities, such as creating, reading, and manipulating mail, while the server processor (or processors) handles the security, routing, and special handling of mail. This spreads the processing load over a multitude of client processors, while still utilizing the powerful processing of the server machine.

Tight security The server software is responsible for the security of the mail system. The server software is the entity that actually places messages in mailboxes. The clients therefore do not need permissions to all mailboxes. This creates a much more secure mail system.

Reduced network traffic Because the server software informs clients of new mail, the client software does not have to poll the server, thus reducing network traffic.

Scalable The term *scalable* relates to the ability to grow easily. A client/server mail system can scale to any size organization.

The primary disadvantage of the client/server model is the following:

Increased server hardware requirements Because the server has an active role in the messaging environment, there are greater requirements for the server hardware platform. This should not be seen as much of a disadvantage in light of the advantages of scalability, central administration, backup, and other advantages.

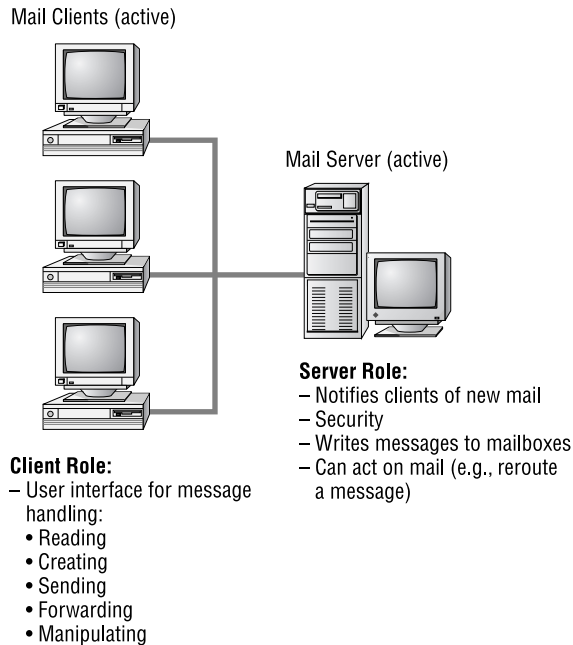
Figure 1.5 illustrates the client/server mail system.

Exchange is a client/server messaging system. The Exchange 2000 Server software runs as a series of services on a Windows 2000 server. It provides server-side messaging functions for the client applications. Exchange also ships with the Outlook client application noted earlier in this chapter. These programs, along with other client applications like Web browsers, provide client-side functions such as making requests to the server and creating and manipulating data.

So far, we have learned what features make up Exchange 2000 Server and how the system is implemented, namely the client/server model. Now we need to turn our attention to the context or scale in which Exchange can be implemented.

16 Chapter 1 • Introduction to Microsoft Exchange

FIGURE 1.5 Client/server mail system



Enterprise-Quality Features

Microsoft Exchange 2000 Server actually comes in two editions. The first is the Standard edition (or, simply, Microsoft Exchange 2000 Server), which is targeted for use by small- to medium-sized businesses. The other edition is Microsoft Exchange 2000 Enterprise Server. It is designed to be an enterprise messaging system, meaning one that is more scalable and includes features meant for larger organizations. In addition to the basic features supported by Exchange 2000 Server, Exchange 2000 Enterprise Server supports the following:

- No limit on the size of databases. The Standard edition limits the size of databases to 16GB.
- Multiple mailbox stores per server. The Standard edition supports only one database per server.

- Support for Active/Active clustering. This feature requires that Exchange 2000 Enterprise Server be installed on Windows 2000 Advanced Server.
- Support for distributed configuration (front-end and back-end servers).

For Exchange to be an enterprise messaging system, a large number of technologies had to be included or leveraged from other products (such as Microsoft Windows 2000 Server). This section briefly discusses the technologies that make Exchange a true enterprise messaging system. Those technologies fall into six categories:

- Enterprise-quality application platform
- Scalability
- Interoperability
- Performance
- Administration
- Reliability

Enterprise-Quality Application Platform

Before a determination can be made as to whether or not a product can scale to the size an organization needs, it must be determined that the product can do the things it needs to do. Exchange provides the necessary application platform to meet the requirements of almost any organization. The following are some of the elements of the Exchange application platform:

Supports a large number of messaging services E-mail, electronic forms, groupware, and add-on products for faxing, paging, video conferencing, voicemailing, and many other services are supported.

Supports a large number of client platforms There is client software that runs on MS-DOS, Windows 3.x, Windows 95, Windows 98, Windows NT, Windows 2000, Apple Macintosh, Unix, and IBM OS/2.

Integrates with other client applications The Outlook client program that ships with Exchange tightly integrates with the most popular application suite on the market, Microsoft Office.

18 Chapter 1 • Introduction to Microsoft Exchange

Provides open architecture/extensibility Exchange is based on an open architecture, meaning that the specifications of many of its protocols are available in the public domain. Examples of published protocols include the *Messaging Application Programming Interface (MAPI)*, Internet protocols, and various Comit Consultatif International Telegraphique et Telephonique (CCITT) protocols. Developers can use this openness to create additional applications and programs that work with or extend Exchange. That is what is meant by extensible. One example of the way Microsoft encourages this is by including a single-user version of the Microsoft Visual InterDev product with Exchange Server. Developers can use Visual InterDev to create Web-based applications that enable Web clients to access Exchange resources. Chapter 6 briefly covers this topic.

Based on industry standards The Exchange protocols, along with being open and extensible, are based on industry standards (protocols can be open and extensible but not based on industry standards). The MAPI protocol is considered an industry standard. Some of the industry standard Internet and CCITT protocols used in Exchange are as follows:

Internet mail *Simple Mail Transfer Protocol (SMTP)*, Post Office Protocol, version 3 (POP3), and Internet Message Access Protocol, version 4 (IMAP4). See Chapter 6.

Internet chat Internet Relay Chat (IRC). See Chapter 10.

Internet directory access *Lightweight Directory Access Protocol (LDAP)*. See Chapter 6.

Internet news services *Network News Transfer Protocol (NNTP)*. See Chapter 6.

Internet management *Simple Network Management Protocol (SNMP)*. See Chapter 9.

Internet security *Secure MIME (S/MIME)*, Secure Sockets Layer, version 3 (SSL), and Simple Authentication and Security Layer (SASL).

Internet Web protocols *HyperText Transfer Protocol (HTTP)* and HyperText Markup Language (HTML). See Chapter 6.

CCITT message transfer Comit Consultatif International Telegraphique et Telephonique (International Telegraph and

Telephone Consultative Committee): X.400. See the section “Industry Standards” later in this chapter.

CCITT directory X.500. See the section “Industry Standards” later in this chapter.

Security features Using the Internet security protocols listed above, along with other protocols, Exchange can provide advanced security features. For example, messages can be sent with a digital signature to confirm the identity of the sender, and message content can be encrypted to prevent unauthorized viewing. Chapter 14 discusses the protocols and administration of advanced security in Exchange. Further security features, and ones that are leveraged from Microsoft Windows 2000 Server, include:

Mandatory logon A user must have a domain account and password to log on to a Windows 2000 Server domain.

Discretionary access control An Exchange administrator can use Windows 2000 security to control access to Exchange resources. For example, one administrator could have permission to manage particular Exchange servers or features, but not others.

Auditing Windows 2000 can be configured to monitor and record certain events. This can help diagnose security events. The audit information is written to the Windows 2000 Event Log.

Scalability

Once a product has been determined to accomplish the types of things you need to get done, then you must find out if it can do it on the scale you need. Exchange is extremely scalable due to the following features:

Software scalable Exchange can be implemented with a single Exchange server, or dozens of servers, depending on the messaging requirements. Even with multiple Exchange servers, a single enterprise messaging system exists. This is due to the Exchange features that enable communication between servers. This functionality permits Exchange to scale from single server to multiple server implementations. Microsoft itself uses Exchange for its worldwide messaging system.

Hardware scalable Scalability is also evidenced by the maximum hardware specifications that Exchange can utilize.

20 Chapter 1 • Introduction to Microsoft Exchange

CPU Scalable from one to eight processors, depending on the operating system.

RAM Maximum is 4GB.

Disk storage Storage is limited only by hardware capacity. The Standard edition of Microsoft Exchange 2000 Server has a 16GB storage limit on each of the Exchange databases. The Enterprise edition has no limit on either of those databases.

Interoperability

For a product to fit into an enterprise, it might need to work with an existing messaging system. This is called interoperability or *coexistence*. An organization might need to move all of its existing messaging data to a new messaging product. This is called a *migration*. Exchange addresses both of these issues.

To interoperate with various non-Exchange systems, referred to as foreign systems, Microsoft had to write special software programs called *connectors*. Connectors are similar to translators who understand both Exchange and the foreign system and translate between them. Third-party companies have also written similar programs. Microsoft refers to these programs as gateways. Some of the messaging systems that Exchange can interoperate with include the following:

- Internet mail
- X.400 mail systems
- Microsoft Mail
- Lotus cc:Mail
- Lotus Notes
- Digital Equipment Corporation (DEC) All-IN-1
- Verimation MEMO

The Standard edition of Exchange 2000 Server ships with connectors for Internet mail, Microsoft Mail, Lotus cc:Mail, Lotus Notes, and X.400 mail systems. Connectivity to other systems, such as DEC ALL-IN-1 or Verimation MEMO, is provided through third-party gateway products.



For Exchange to interoperate with some of the previous systems, third-party software is required. Chapter 12 discusses interoperability in more detail.

Some of the messaging systems that Exchange can perform a migration from include the following:

- Microsoft Mail for PC Networks
- Lotus cc:Mail
- Lotus Notes
- Novell GroupWise 4.x and 5.x
- Netscape Collabra Share forums
- IBM PROFS and OfficeVision
- DEC All-IN-1
- Verimation MEMO
- LDAP-compliant directory information and IMAP4-based information from Internet e-mail systems

Performance

A messaging system requires adequate performance to be used on an enterprise scale. Exchange meets that requirement by being a 32-bit, multi-threaded program running on a high-performance operating system, Microsoft Windows 2000 Server. Many features are built into the Exchange System Manager to help optimize server performance.

Administration

An important element of any enterprise application is the ability to effectively and efficiently administer it. Exchange meets this need by including powerful administration programs, one of which is the *Exchange System Manager* snap-in for the Microsoft Management Console (MMC). This program provides a single point of administration for an entire Exchange organization. Exchange servers anywhere in the enterprise can be managed

22 Chapter 1 • Introduction to Microsoft Exchange

from this program, as well as such activities as configuring a server, managing connections to foreign systems, and monitoring services centrally.

Along with its own administrative utilities, Exchange can leverage the administrative capabilities of the Windows 2000 Server operating system. Exchange integrates with Windows 2000 Server utilities like Performance Monitor and Event Viewer. Another powerful administration feature in Exchange 2000 Server involves Active Directory. Exchange-related user features (such as mailbox properties) are now managed using the Active Directory Computers and Users utility—the same tool used by Windows 2000 administrators to manage users and groups.

Exchange 2000 Server also supports the Simple Network Management Protocol (SNMP). This enables third-party SNMP monitor programs to collect various management information about an Exchange server, such as the performance information gathered by Performance Monitor. The topic of Exchange Server administration is covered in Chapter 9.

Reliability

Because of the importance of a messaging system to an enterprise, it must be reliable. Exchange provides reliability through the following ways:

Transaction log files Data that is to be written to an Exchange database is first written to these log files (which can be done very fast). The data is later written to the appropriate database, which takes longer because of the structured nature of a database. If, for whatever reason, a server has an unintended shutdown, data that has not been written to the database is not lost; it can be automatically reconstructed from the transaction log files. Chapters 2 and 13 discuss this topic further.

Windows 2000 Backup program When Exchange is installed, it adds extensions to the Windows 2000 Backup program, allowing that program to back up Exchange information.

Replicas Exchange can be configured to have multiple copies, called replicas, of a single public folder on different servers. This prevents a single point of failure in terms of data access and provides quicker access by putting folders on servers closer to the users in an organization.

Intelligent message routing This feature allows multiple routes to a destination, thereby preventing a single point of failure for message delivery.

Windows 2000 Server fault tolerance Exchange takes advantage of the many fault tolerant features of the Windows 2000 Server operating system, such as disk mirroring and disk striping with parity. Exchange 2000 Enterprise Server also supports Windows 2000 Server Active/Active clustering, which provides fault tolerance in the event of a server malfunction. If one server fails, another server can take its place, thereby providing uninterrupted service to users.

Industry Standards

Microsoft Exchange is based on industry standard technologies, ensuring an open architecture and, therefore, extensibility (i.e., the ability to easily add on to the product). An adequate understanding of the standards used in Exchange will help in utilizing it. This section presents a brief explanation of the following standards:

- Messaging Application Programming Interface (MAPI)
- The Remote Procedure Call (RPC) protocol
- X.400
- X.500



The Internet standards are also very important in Exchange, and they will be discussed in Chapters 2 and 6.

Messaging Application Programming Interface (MAPI)

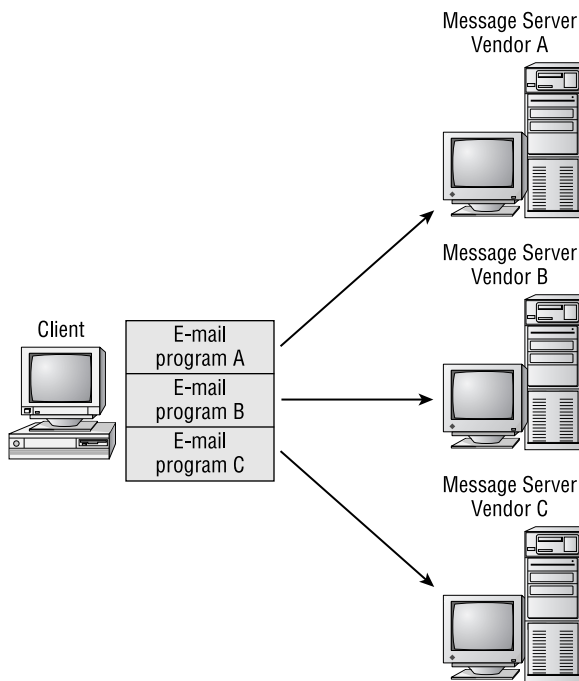
To understand MAPI, you must first understand what an application programming interface is. At the code level, a program's functions are invoked through specific instructions. The collection of those instructions are referred to as an *application programming interface (API)*. That phrase is appropriate because the API allows a programmer to interface with the functions of a program. For example, if a program has the ability to read a message, there is a specific API instruction, also called a function call, that can

24 Chapter 1 • Introduction to Microsoft Exchange

invoke that ability. If two programs need to interact, they must do so with an API they both understand. For example, if program A sends the instruction `Read_Message 4` to program B, but program B only understands the instruction `Message_4_Read`, then the instruction will not be understood. Humans can use slightly different grammar and still understand one another, but computers are not that forgiving.

In the past, many client/server messaging products had their own APIs for the client/server interaction. If someone wrote a client program, it would only work with the messaging system whose API it used. If a user needed to connect to multiple messaging systems, multiple client programs were needed. See Figure 1.6.

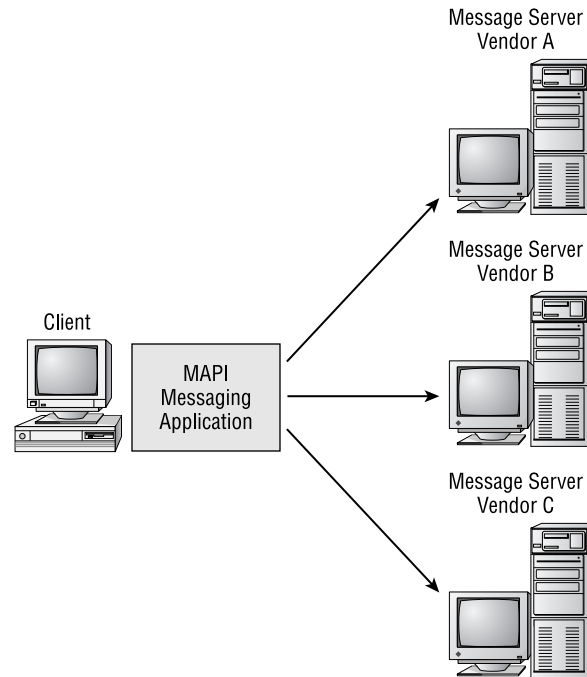
FIGURE 1.6 Multiple messaging APIs require multiple programs



Microsoft decided to remedy that situation by creating a standard messaging architecture, referred to as the Messaging API (MAPI). MAPI accomplishes two broad goals. One, it provides a standard API for client/server messaging interaction. This role makes MAPI a type of middleware, meaning that it stands in the middle between clients and servers. Some authors refer

to middleware as the slash (/) between the words client and server. MAPI makes it possible for a single client application to access different messaging servers. See Figure 1.7 for an illustration.

FIGURE 1.7 Accessing different messaging servers through MAPI



The second broad goal of MAPI is to provide a standard set of services to client messaging applications. These services include address books, message storage, and transport mechanisms. Even when using different types of MAPI applications, like e-mail, fax, and voicemail, a user can access a single address book (a universal address book) and store different data types in the same folder (a universal inbox). The transport mechanisms relate to a single client application that can connect to different messaging systems. A single MAPI e-mail application can access an Exchange server, a Microsoft Mail post office, an Internet mail server, and others.

Although MAPI includes individual API instructions, it most often communicates those instructions in an object-oriented manner. An object is a container; in this context, it functions as a container of API instructions. The Microsoft specification for object-oriented programming is called the

26 Chapter 1 • Introduction to Microsoft Exchange

Component Object Model (COM). MAPI, OLE, ActiveX, and other technologies are part of the COM standard.

The original version of MAPI (called Simple MAPI) was developed by Microsoft. But in the subsequent version (MAPI 1), Microsoft worked with over 100 different vendors to develop an industry standard. Microsoft has also turned over the vast majority of the MAPI specification to standards organizations, while still taking a leadership role by including the core MAPI component with its Windows operating systems.

While MAPI deals with instructions, the next section discusses the protocols that enable those instructions to be passed between clients and servers.

Procedure Calls

We now know the instruction standard used by the Exchange client/server messaging applications, namely MAPI. But client/server applications are divided across physical machines. When a client issues a read instruction for a message, that message could be on the server. The server could understand that instruction and could send the message, but the instruction has to get to the server and the message has to get back to the client. MAPI does not handle those procedures. From MAPI's perspective, the physical distinction of the client and the server does not exist, it is transparent. Microsoft uses the Remote Procedure Call (RPC) protocol to pass instructions and data between machines. Before discussing the RPC protocol, we will first define what a procedure call is and then discuss the two types of procedure calls, local and remote.



In previous versions of Exchange Server, servers in the same Exchange site relied on RPCs to transfer messages and directory information between them. Exchange 2000 Server now uses SMTP to exchange this information between servers. You'll learn more about this in Chapter 2.

Procedure calls handle the transfer of instructions and data between a program and processor, or processors. When a program issues an instruction, that instruction is passed to the processor for execution, and the results of the execution are passed back to the program. Now, let's look at the two main types of procedure calls.

Local Procedure Calls

When a program issues an instruction that is executed on the same computer as the program executing the instruction, the procedure is referred to as a *local procedure call*. When Exchange Server components perform activities on that server, they issue instructions that are executed by that server's CPU or CPUs. That is an example of a local procedure call. Exchange uses a Microsoft protocol called the Local Procedure Call (LPC) to implement this mechanism.

Remote Procedure Calls

A *remote procedure call* is similar to a local procedure call in that it relates to the transfer of instructions and data between a program and processor. But unlike a local procedure call, a remote procedure call enables an instruction issued on one computer to be sent over the network to another computer for execution, with the results being sent back to the first computer. The computer making the instruction and the computer performing the execution are remote from each other. The transfer of instructions and data between the computers is totally transparent to the original program and to the user. To the program issuing the instruction, all of its instructions appear to be locally executed. Remote procedure calls are a key ingredient in distributed processing and client/server computing.

The RPC mechanism permits the optimization of performance by assigning different computers to do specific tasks. For example, some programs require lots of processor power, memory, or storage or all three. It would be impractical to give every computer running these applications the necessary levels of resources. But one specialized computer could be given, for example, four processors, 512MB of RAM, and 16GB of storage. Clients could use those resources through the RPC mechanism.

Because the request/reply aspect of RPC is intended to be transparent to the client program and user, the speed of network communication is a factor. The computers involved in an RPC session need to have a high-speed permanent link between them, such as a local area network (LAN) or a high-speed wide area network (WAN).

Exchange uses remote procedure calls in many of its communications. The protocol that Exchange uses to implement remote procedure calls is called the Remote Procedure Call (RPC) protocol. This protocol is discussed in the following section.

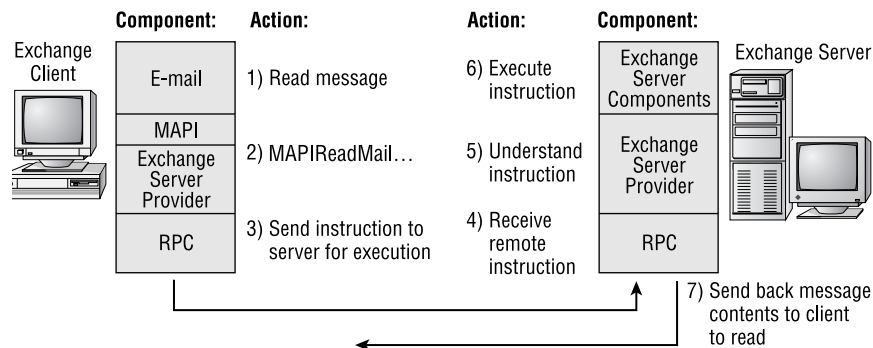
28 Chapter 1 • Introduction to Microsoft Exchange

Remote Procedure Call (RPC) Protocol

As previously stated, the protocol that Exchange uses to implement remote procedure calls is called the Remote Procedure Call (RPC) protocol. It is based on a protocol created by the standards group Open Software Foundation (OSF) and is part of the OSF's Distributed Computing Environment (DCE) protocol suite. Microsoft includes the RPC protocol with their Windows 2000 operating system. In previous versions of Exchange, servers within an Exchange site transferred messages between themselves using RPCs. In Exchange 2000, this functionality has been largely taken over by SMTP. RPCs are still used to communicate with Exchange 5.5 servers, but SMTP is now used for all communications between Exchange 2000 servers inside and outside the boundaries of a routing group.

When a user chooses to read a message, the client program issues a MAPI instruction (MAPIReadMail). The RPC protocol on the client transfers this instruction to the Exchange server where the message physically resides. This is called a request. The RPC protocol on the server receives this request, has it executed, and sends the message back to the client's screen. This is called a reply. RPC clients make requests, and RPC servers make replies. RPC is sometimes referred to as a request/reply protocol. RPCs are also used in some Exchange server-to-server communications. Figure 1.8 illustrates the RPC mechanism.

FIGURE 1.8 The Remote Procedure Call protocol





Note that being an RPC client or server doesn't really have anything to do with being a messaging client or server. In the example in Figure 1.8, the messaging client is also the RPC client, but an RPC client is really just the computer that issued the RPC. Exchange servers often communicate information between themselves using RPCs. The computer that initiates the connection request is the RPC client, and the computer that receives the request is the RPC server.

CCITT X.400

For most of the history of electronic messaging in the private sector, there were no widely accepted messaging standards. Different messaging products used vastly different messaging protocols. This made interoperability between different systems difficult and costly, sometimes impossible. To address this situation, different standards organizations began to develop what they hoped would become internationally recognized messaging standards. One of those standards organizations was the Comit Consultatif International Telegraphique et Telephonique (CCITT). This is translated in English as the International Telegraph and Telephone Consultative Committee. One of the standards they developed was the X.400 Message Handling System (MHS) standard. Exchange uses some of the technologies of the X.400 standard.



The CCITT is now a subdelegation of the International Telegraph Union (ITU), which is an agency of the United Nations. The State Department is the voting member from the United States.

The different versions of the X.400 standard are referred to by the year they were officially published and by a specified color. Versions to date are as follows:

- 1984 “Red Book”
- 1988 “Blue Book”
- 1992 “White Book”

30 Chapter 1 • Introduction to Microsoft Exchange



The Message Handling System (MHS) discussed in this section is not the same standard as the Novell-related Message Handling System (MHS).

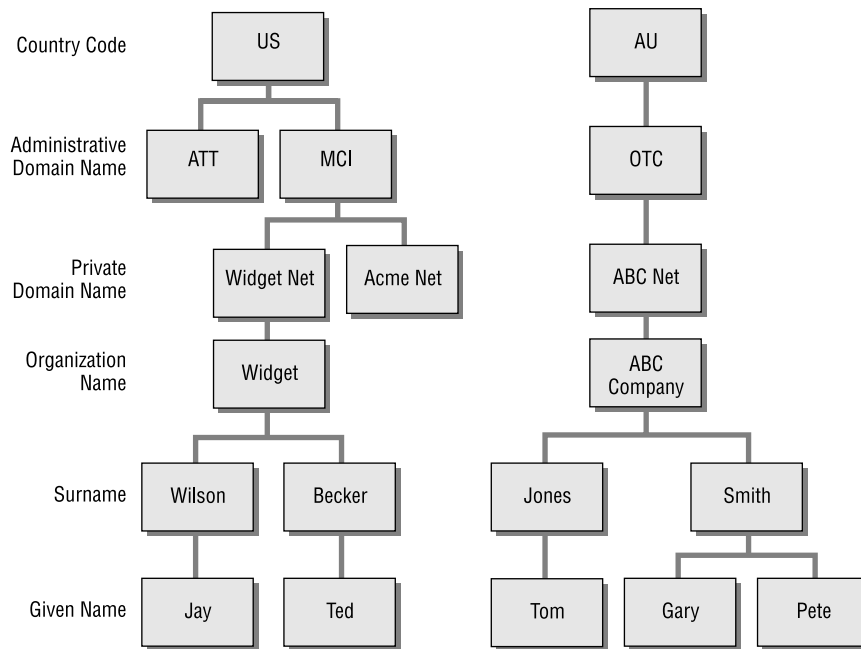
X.400 is a set of standards that relates to the exchange of electronic messages (messages can be e-mail, fax, voicemail, telex, etc.). The goal of X.400 is to enable the creation of a global electronic messaging network. Just as you can make a telephone call from almost anywhere in the world to almost anywhere in the world, X.400 hopes to make that a reality for electronic messaging. X.400 only defines application-level protocols and relies on other standards for the physical transportation of data (e.g., X.25 and others).

X.400 Addressing: Originator/Recipient Address

Try to imagine what the American telephone system would be like if different parts of the country used different numbering schemes: different number lengths, different placement of the area code, etc. Obviously that would lead to a lot of complexity and problems, hence a standard numbering scheme exists. Electronic messaging also needs a standard addressing scheme to avoid the same sort of chaos.

One might think that you could simply list people's names in alphabetical order. But there are many problems with that scheme. The addressing scheme needs to be able to potentially scale to the entire world's population. An alphabetical list would be quite long. There is also the problem of what constitutes a last name; different countries have different methods (e.g., Anwar el-Sadat, Willem de Kooning). A truly global addressing scheme needs to be totally unambiguous.

The addressing scheme that X.400 uses is called the Originator/Recipient Address (O/R Address). It is similar to a postal address in that it uses a hierarchical format. While a postal address hierarchy is country, zip code, state, city, street, and recipient's name, the O/R Address hierarchy consists of countries, communication providers (like AT&T), companies or organizations, and other categories. Figure 1.9 and Table 1.1 present some of these categories, called fields.

FIGURE 1.9 X.400 Originator/Recipient Address example**TABLE 1.1** X.400 Originator/Recipient Address Example

Field	Abbreviation/ Example	Description
Country code	c=US	Country
Administrative Management Domain (ADMD)	a=MCI	The third-party network- ing system used (e.g., AT&T, MCI, Sprint, etc.)
Private Management Domain (PRMD)	p=WidgetNet	Subscriber to the ADMD (company name)

32 Chapter 1 • Introduction to Microsoft Exchange**TABLE 1.1** X.400 Originator/Recipient Address Example *(continued)*

Field	Abbreviation/ Example	Description
Organization	o=Widget	Name of company or organization
Surname	s=Wilson	Last name
Given name	g=Jay	First name

The O/R Address specifies an unambiguous path to where the recipient is located in the X.400 network (it does not specify a path the message might take, only the path to where the recipient is located).



In actual practice, this addressing scheme is not as standardized as Table 1.1 makes it seem, nor is it used in the standardized way. Although the address fields have always been specified, the order in which to write them was not specified until 1993. Consequently, you will see them written in different ways. Some X.400 implementations have modified the standard.

X.400 Message Format: Interpersonal Messaging (IPM)

X.400 also specifies the protocols for formatting messages. The most common one is called Interpersonal Messaging (IPM) and is used for e-mail messages. There are other protocols for other types of messaging, such as Electronic Data Interchange (EDI).

X.400 Message Routing: Message Transfer Agent (MTA)

Another very important X.400 protocol is Message Transfer Agent (MTA). MTA is the protocol that runs in the message routing machines (i.e., routers). MTA is like a local post office, in that it receives and routes messages to their ultimate destinations. And just like a postal system (a snail-mail system), electronic messages can go through several MTAs before they arrive at their ultimate destinations. This type of delivery method is called store and forward. An MTA machine receives a message,

stores it so it can calculate its next route, and then forwards it either to another MTA machine or its ultimate destination. This method eliminates the need for the sender's application and the recipient's application to perform any simultaneous actions in order to exchange data. A sender's message is simply packaged with all the necessary addressing information and is sent to the next store-and-forward MTA machine (i.e., router). That MTA can route it to the next MTA, and so on, until it reaches its final destination.

Other X.400 Information

While the X.400 standard does not define the protocols for the physical transportation of messages, it does specify what other standards it can use. They include the following OSI (Open Systems Interconnection) protocols:

- TP0/X.25
- TP4 (CLNP)
- TP0/RPC 1006 to TCP/IP



TP stands for Transport Protocol.

Third-party X.400 networks that can be subscribed to include: AT&T Mail, AT&T EasyLink, MCI Mail, Sprintmail, Atlas 400 (France), Envoy 100 (Canada), Telebox 400 (Germany), and Telecom Australia. Microsoft Exchange is an X.400 messaging product.

CCITT X.500

The CCITT X.500 standard defines the protocols for a global directory service. A directory service is a database of information on resources. Resources can be user accounts, user groups, mailboxes, printers, fax machines, and many other items. These resources are officially referred to as objects. The information about an object, such as a mailbox, can include the owner of the mailbox and the owner's title, phone number, fax number, as well as many other types of information. The information about an object is referred to as its properties or attributes. A directory enables objects and their properties to be made available to users and administrators.

34 Chapter 1 • Introduction to Microsoft Exchange

The directory's importance cannot be overstated. To use a telephone analogy, imagine the current global telephone system without telephone directories. The technology to make a call would be in place, but you would have a hard time locating a person's number to call. The creation of a global electronic yellow pages could go a long way toward solving the "I know it's out there, I just can't find it" problem.

To create a directory service, X.500 addresses two main areas:

Directory structure How resources should be organized.

Directory access How one is able to read, query, and modify a directory.

X.500 Directory Structure

The X.500 directory structure is hierarchical, which facilitates a logical organization of information. Figure 1.10 illustrates the X.500 directory structure, and Table 1.2 explains it.

FIGURE 1.10 X.500 directory structure example

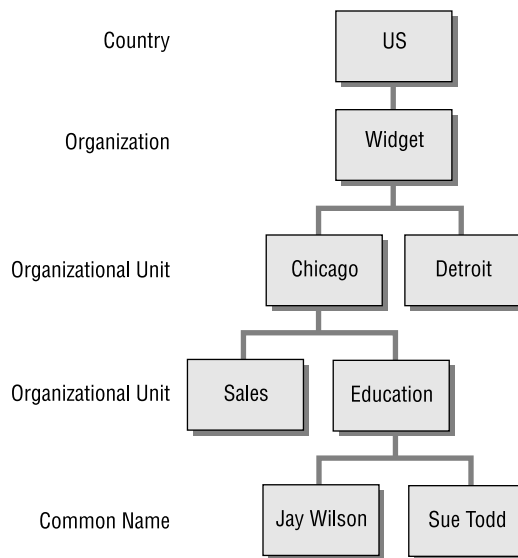


TABLE 1.2 Descriptions of X.500 Objects

X.500 Object	Abbreviation/Example	Description
Country	c=US	Country of the organization
Organization	o=Widget	Name of the organization
Organizational Unit	ou=Chicago	Subcategory of the organization
	ou=Detroit	
Organizational Unit	ou=Sales	Subcategories under the ou=Chicago
	ou=Education	
Common Name	cn=JayWilson	Name of a specific resource (username, fax name, printer name, etc.)



The X.500 terminology for the structure of a directory is the Directory Information Tree (DIT). The term for the information in the directory is Directory Information Base (DIB).

To communicate the location of an object in the directory hierarchy, list the path to that object, starting at the top and moving down. This is called a Distinguished Name (DN). The DN of the example in Figure 1.10 is as follows:

c=US; o=Widget; ou=Chicago; ou=Education; cn=JayWilson

The differences between an X.500 address, the Distinguished Name (DN), and an X.400 address are due to their different purposes. A DN is the location of an object in the directory, whereas the X.400 address is the location of an object in a messaging system. Getting back to the telephone analogy, a DN is the location of a person in the phone book, and an X.400 address is where they are in the physical telephone system. This is illustrated

36 Chapter 1 • Introduction to Microsoft Exchange

by the fact that an X.400 address can include information about third-party messaging networks that are used to physically deliver a message, some examples being AT&T, MCI, and Sprint.



The 1988 release of X.400 incorporated the use of a DN address instead of, or along with, an O/R Address. Some implementations of X.400 also incorporated some of the X.500 fields, like `ou=x` and `cn=x`.

A directory also puts a more natural interface on network resources. Many communication objects have long numeric identifiers that are hard to remember. A directory allows objects to be presented to users by a natural descriptive term. The directory then maps the descriptive term to the numeric identifier.



X.500 has a 1988 version and a 1993 version.

Directory Access

Having a directory is only half the equation. Users and administrators must also be able to access it to read, query, and write to it. A user might query the directory for a printer on the fourth floor in the Sales department, and the directory could respond with the needed information about the printer. Other issues that must be addressed are security (e.g., who can access an object and modify its properties) and directory replication (a true global directory would need to be on more than one machine). These issues are addressed by directory access protocols.

The standard access protocol in the X.500 recommendations is the Directory Access Protocol (DAP). DAP is considered more of a model than a real-world protocol. This is because DAP is very computer-resource intense (i.e., heavy) on client machines, and the few implementations of it are proprietary. But a newer access protocol that is getting a lot of attention today is the Lightweight Directory Access Protocol (LDAP). LDAP is an Internet protocol derived from the X.500 DAP. One of the reasons LDAP is called lightweight is because it requires fewer computer resources on the client. While LDAP is an Internet protocol, it is designed to enable access to an X.500-type directory. Almost every major software vendor has pledged support for LDAP.

Summary

The Exchange product is a powerful client/server enterprise messaging product.

The types of applications in an Exchange environment are as follows:

- Electronic mail (e-mail)
- Groupware
- Other applications, such as fax, paging, video conferencing, and voicemail

The client application that is shipped with Exchange is as follows:

- Outlook

The network computing model that Exchange uses to implement its messaging system is the client/server model. This model utilizes the computing power of both client computers and server computers.

Exchange was designed for enterprise-wide implementations and, consequently, meets the following requirements:

- Enterprise-quality application services
- Scalability
- Interoperability
- Performance
- Administration
- Reliability

The following industry standards are used by Exchange:

- Messaging Application Programming Interface (MAPI)
- Internet protocols (e.g., SMTP, POP3, IMAP4, LDAP, SNMP, and others)
- Remote Procedure Call (RPC)
- X.400
- X.500

38 Chapter 1 • Introduction to Microsoft Exchange**Key Terms**

Before you take the exam, be certain you are familiar with the following terms:

application programming interface (API)	mailbox
Chat Service	Mainframe computing
client/server messaging	Messaging Application Programming Interface (MAPI)
coexistence	Microsoft Exchange 2000 Conferencing Server
connectors	migration
Digital signatures	Network News Transfer Protocol (NNTP)
e-mail	OLE 2 (Object Linking and Embedding)
encryption	Outlook Web Access (OWA)
Exchange System Manager	Post Office Protocol, version 3 (POP3)
groupware	public folder
HyperText Transfer Protocol (HTTP)	remote procedure call
Instant Messaging Service	scalable
Internet Information Server (IIS)	Secure MIME (S/MIME)
Internet Message Access Protocol, version 4 (IMAP4)	shared-file messaging system
Internet Relay Chat (IRC)	Simple Mail Transfer Protocol (SMTP)
Lightweight Directory Access Protocol (LDAP)	Simple Network Management Protocol (SNMP)
local procedure call	X.400

Review Questions

1. You are currently running Verimation MEMO on your network, but are considering deployment of Exchange 2000 Server. Once you install Exchange 2000 Server, Standard edition, which of the following options will be available to you? Choose all that apply.
 - A. Install a connector to MEMO so that the two systems can coexist and interoperate.
 - B. Use a migration tool to import data from MEMO to Exchange 2000 Server.
 - C. Upgrade the MEMO servers to Exchange 2000 Server.
 - D. You will not be able to use your legacy MEMO data.
2. You are evaluating client applications for use with Exchange 2000 Server. Many of your users need to be able to have offline access to all their mail folders and address books. Which of the following clients provide this? Choose all that apply.
 - A. Outlook 2000
 - B. POP3 clients
 - C. IMAP4 clients
 - D. Web browsers via Outlook Web Access
3. What is the name of the mechanism used when two Exchange components on the same machine pass instructions and data?
 - A. Remote procedure call
 - B. Remote instruction call
 - C. Local instruction call
 - D. Local procedure call

40 Chapter 1 • Introduction to Microsoft Exchange

4. Which of the following operating systems can be used to run client applications that let users access Exchange 2000 Servers? Choose all that apply.
 - A. Windows 3.x
 - B. Windows 98
 - C. Windows 2000
 - D. Macintosh
 - E. UNIX
 - F. OS/2
5. You have just installed a new Exchange 2000 server and would like to migrate users and messages from a legacy Microsoft Mail system. In order to do this, you must first set up a way for the two systems to communicate. What component of Exchange 2000 would you use to do this?
 - A. Migration Kit
 - B. Connector
 - C. Import/Export tool
 - D. You cannot do this
6. You are preparing a report on the features of Exchange 2000 Server for your manager. Which of the following would you list as features that are available in Exchange 2000 Enterprise Server that are not available in the Standard edition? Choose all that apply.
 - A. Multiple databases per server
 - B. Instant Messaging support
 - C. Front-end and back-end server support
 - D. Active/Active clustering
 - E. Video conferencing

7. You are considering deploying Exchange 2000 on your network. You need to provide your users with basic messaging functionality and also advanced data conferencing. Which of the following editions of Exchange do you need?
 - A. Exchange 2000 Server
 - B. Exchange 2000 Enterprise Server
 - C. Exchange 2000 Conferencing Server
 - D. Exchange 2000 Collaboration Server
8. Which of the following protocols can be used to *retrieve* messages from Exchange 2000 Server? Choose all that apply.
 - A. LDAP
 - B. PNP
 - C. PPP
 - D. POP3
9. Which of the following services of Exchange 2000 Server would allow two or more users to collaborate on documents in real time?
 - A. Chat Service
 - B. Instant Messaging Service
 - C. Public Folders
 - D. Workflow Service
10. Which Outlook feature enables e-mail content to include multiple format types, such as fonts, sizes, and colors?
 - A. WordPerfect
 - B. This software cannot do this
 - C. Richman message content
 - D. Rich-text message content

42 Chapter 1 • Introduction to Microsoft Exchange

- 11.** Which of the following components work together to allow Web browsers to access an Exchange server? Choose two.
- A.** Internet Information Server
 - B.** Outlook Browser Access
 - C.** Outlook Web Access
 - D.** Exchange Web Server
- 12.** You are the manager of a large Exchange organization. Recently, you began to suspect that someone was attempting to log on to resources without permission. You enabled auditing on your servers to keep track of suspicious activity. Which utility would you use to view the audited information?
- A.** Exchange System Manager
 - B.** Active Directory Users and Computers
 - C.** Computer Management
 - D.** Security Manager
 - E.** Windows 2000 Event Log
- 13.** You are a consultant that has been hired by the Arbor Shoes Company. Some time ago, their network administrator set up a messaging system. The administrator has left the company, and the company now wants you to help them decide whether to keep the existing system or move to Exchange 2000 Server. In either case, you will need to train someone how to manage the system. A person at the company describes the messaging system to you in the following way. There is one server on their network that functions as the mail server. Whenever a new person needs a mailbox, the administrator creates a new folder and assigns it permissions. Then, the client application must be pointed to that folder. What type of messaging system do you suspect the company is running?
- A.** Client/server messaging system
 - B.** Shared-file messaging system
 - C.** Mainframe messaging system
 - D.** Host-based messaging system

- 14.** You have created a set of public folders on one of the six Exchange servers. Since their creation, the public folders have become an important resource in your organization, and you are concerned that having all of the folders on one server creates a single point of failure; should that server fail, no one will have access to the folders. What is the simplest way to remedy this situation?
- A.** Back the public folders up hourly so that you may quickly restore them to another server if necessary.
 - B.** Configure two of the servers as a cluster.
 - C.** Configure replicas of the public folder on another Exchange server.
- 15.** You are currently making recommendations for the purchase of Exchange 2000 software. You expect that the size of your databases on several servers will run around 25GB. Which edition of Exchange 2000 would you need for these servers?
- A.** Exchange 2000 Server
 - B.** Exchange 2000 Advanced Server
 - C.** Exchange 2000 Enterprise Server
 - D.** Exchange 2000 Datacenter Server
- 16.** In X.500, which of the following constructs describes the location of an object in a directory?
- A.** Distinguished Name
 - B.** X.500 Address
 - C.** Organizational unit
 - D.** Common name

44 Chapter 1 • Introduction to Microsoft Exchange

- 17.** Your company is currently running Microsoft Mail, a shared-file messaging system. You have been trying to convince your manager to move to Exchange 2000 Server. In telling your manager about the features of client/server messaging systems, which of the following features would you NOT include?
- A.** Distributed processing
 - B.** Tight security
 - C.** Passive client application
 - D.** Reduced network traffic
- 18.** Which of the following is an Internet management protocol supported by Exchange 2000 Server?
- A.** SNMP
 - B.** SMTP
 - C.** MMX
 - D.** MID
- 19.** Which of the following protocols are used by Web browsers?
- A.** HTTP
 - B.** HTML
 - C.** SNMP
 - D.** SMTP
- 20.** Which of the following is the X.400 component whose primary responsibility is to receive and route messages to their ultimate destination?
- A.** Message Routing Agent
 - B.** Message Transfer Agent
 - C.** Message Handling Agent
 - D.** Message Delivery Agent

Answers to Review Questions

1. B. Exchange 2000 Server comes with a migration tool for use with Verimation MEMO. Although coexistence with MEMO is supported, a third-party gateway connector is required. It does not come with Exchange 2000 Server. Also, Exchange 2000 Server does not support upgrades from foreign messaging systems.
2. A. Only Outlook 2000 and some previous versions of Outlook provide support for using folders and address books offline.
3. D. A local procedure call is an instruction passed between two components on the same computer. A remote procedure call is passed between two components on different computers that are linked via a permanent high-speed network.
4. A, B, C, D, E, F. Any operating system that can run a Web browser (and there is one available for every OS out there) or a POP3 or IMAP4 client can access Exchange 2000 Server as long as Exchange is configured correctly.
5. B. Connectors provide a way to connect Exchange servers in different routing groups and a way to connect Exchange organizations to external messaging systems. In migrating from existing messaging systems to Exchange, you must first set up a connector so that the two systems can communicate. Once the connector is configured, you will be able to migrate users and messages to Exchange 2000 Server.
6. A, C, D. Instant Messaging support is available in the Standard edition of Exchange 2000 Server. All of the other features listed require the Enterprise edition except for video conferencing, which requires Exchange 2000 Conferencing Server.
7. A, C. Microsoft Exchange 2000 Conferencing Server is a separate product from Exchange 2000 Server. It provides services that allow two or more people to communicate and collaborate as a group over the Internet or a private intranet in real time. Specifically, Exchange 2000 Conferencing Server provides data conferencing, audio and video conferencing, and advanced schedule management.

46 Chapter 1 • Introduction to Microsoft Exchange

8. D. POP3 is a message retrieval protocol. LDAP is a directory access protocol. PPP is a remote access protocol.
9. A. The Chat Service enables users to conduct online meetings and discussions or collaborate on documents or projects online and in real time.
10. D. Outlook enables the creation of rich-text message content that can include multiple fonts, sizes, colors, alignments, and other formatting controls.
11. A, C. Internet Information Server is a Web server service built into Windows 2000 and provides the Internet protocol support for Exchange 2000 Server. Outlook Web Access is a component that allows IIS to access the Web Store and then present information to Web browsers in HTML format.
12. E. Windows 2000 can be configured to monitor and record certain events. This can help diagnose security events. The audit information is written to the Windows 2000 Event Log.
13. B. A shared-file messaging system is one in which a passive server is basically configured with a set of shared folders. Client applications are configured to regularly poll the shared folders to see if new mail has been deposited there.
14. C. Exchange 2000 allows you to configure replicas of public folders on multiple servers.
15. C. Exchange 2000 Server (the Standard edition) has a 16GB limit on the size that a database may reach. Exchange 2000 Enterprise Server does not have this limit. There is no such edition as Exchange 2000 Advanced Server or Datacenter Server.
16. A. In X.500, the Distinguished Name (DN) describes the location of an object in the X.500 directory.

17. C. In a shared-file messaging system, servers are relatively passive, and clients perform almost all active messaging functions. Even though the server in a client/server system plays a much more active role, the client is still by no means passive.
18. A. Simple Network Management Protocol (SNMP) is a TCP/IP-based management protocol supported by Exchange 2000 Server in the form of the MADMAN MIB, an information base of manageable Exchange components.
19. B. HTTP is the protocol used to define how messages are sent between a Web browser and Web server. HTML is the markup language that a Web browser uses to determine how a page should be displayed in the browser window.
20. B. The Message Transfer Agent (MTA) is the protocol that runs in the message routing machines (i.e., routers). An MTA machine receives a message, stores it so it can calculate its next route, and then forwards it to either another MTA machine or its ultimate destination.

