

# Photoshop Core

---

The first *part* of Photoshop CS2 Savvy introduces you to the fundamental concepts of digital imaging. You'll explore Photoshop's newest features. You'll become intimately familiar with its interface and logic. Finally, you'll delve into the tools and techniques that will get you results with Photoshop.

Part I also covers the key techniques of selections, layers, painting, and transformation—fundamental processes you'll use on almost every image. You'll work with Photoshop's paint engine, learn about digital color, and address resolution issues.

- CHAPTER 1** ■ What's New in Photoshop CS2
- CHAPTER 2** ■ The Nature of the Beast
- CHAPTER 3** ■ Navigation: Know Where to Go
- CHAPTER 4** ■ Setting Up Photoshop
- CHAPTER 5** ■ Making Selections
- CHAPTER 6** ■ Layering Your Image
- CHAPTER 7** ■ Working with Type
- CHAPTER 8** ■ Drawing Paths
- CHAPTER 9** ■ Applying Color and Using Brushes
- CHAPTER 10** ■ Altered States: History
- CHAPTER 11** ■ Using Channels and Quick Mask
- CHAPTER 12** ■ Sizing and Transforming Images
- CHAPTER 13** ■ Image Capture and Digital Photography



# What's New in Photoshop CS2

---

*One of* the most important concepts of the previous version of Photoshop was that it became part of a group of tools known as Creative Suite (hence the CS). Other Adobe products that are included in Creative Suite 2 Standard Edition are ImageReady, InDesign, Illustrator, Bridge, and Version Cue (the Premium Edition adds GoLive and Acrobat). These programs were designed to work together to enable you to utilize their tools for any publishing goals. Photoshop CS2 continues this trend by being part of the most integrated suite of tools Adobe has yet to offer.

Photoshop CS2 is the cornerstone application of Creative Suite, and it has been endowed with upgrades for superior image-editing capabilities and streamlined work flow.

This chapter will talk about the following:

- **System requirements**
- **Adobe Bridge**
- **Photography and video features**
- **Design and production features**
- **Increased automation**
- **Other new features**
- **ImageReady integration**

## System Requirements

The following lists indicate the hardware and operating system requirements for Windows and Macintosh:

### Windows

- Windows XP or Windows 2000 with Service Pack 3
- Intel Xeon, Xeon Dual, Centrino, Pentium class III or 4 processor
- 192 MB of RAM (256 MB or more recommended)
- 280 MB of available hard-disk space
- Color monitor with 16-bit or greater video card
- 1024×768 or greater monitor resolution
- CD-ROM drive
- Internet or phone connection for product activation

### Macintosh

- Mac OS X 10.2.8 or higher (10.3.4 recommended)
- PowerPC processor (G3, G4, or G5)
- 192 MB of RAM (256 MB or more recommended)
- 320 MB of available hard-disk space
- Color monitor with 16-bit or greater video card
- 1024×768 or greater monitor resolution
- CD-ROM drive

### Other Compatible Processors

- AMD Opteron
- AMD Opteron Dual
- AMD Athlon 64 FX
- AMD Athlon 64

Adobe's minimum requirement of 192 MB of RAM is enough to launch and run the program, but its performance will be clunky. Purchase and install as much memory as you can.

## Adobe Bridge

Bridge (see Figure 1.1) is Adobe's next-generation File Browser. Adobe has taken many of the features that made the original File Browser so popular and built upon them to create an even more powerful application that works for the entire Creative Suite (instead of only Photoshop).

Bridge has many features that make locating and processing your images much easier.

- Bridge is a standalone application. This frees up Photoshop to process images while you work in Bridge.
- A button on the Options bar makes Bridge easily accessible.
- Integration with all CS2 applications (Illustrator, InDesign, GoLive)—not just for Photoshop anymore.
- Upgraded preview options, scalable previews, a new filmstrip view, and slideshow mode.
- Enhanced flagging and labeling of images.
- Bridge browser window scripting allows for maximum customization via a scripting language such as JavaScript.

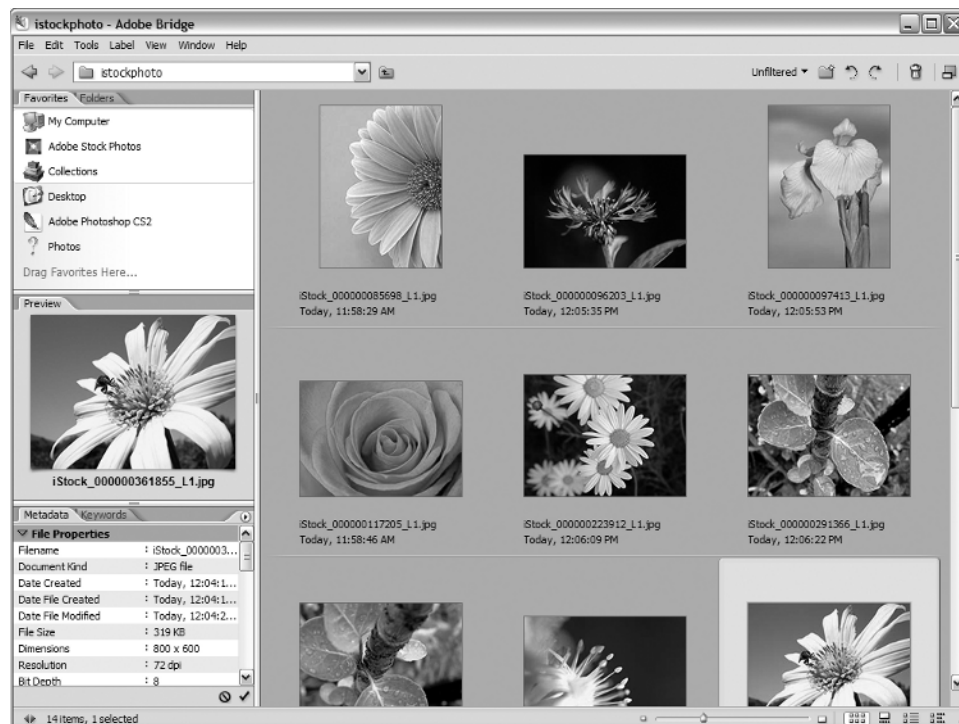


Figure 1.1

The new Adobe Bridge contains many new features.

- Integration with Version Cue.
- Multiple browser windows.
- Multiple monitor support.
- Multifile Camera Raw editing and conversion.
- Better metadata display editing.
- Multipage PDF previews.
- Catalogs (saved searches).
- Compact (floating) mode with drag-drop.
- Suite-wide color-management controls.

## Photography and Video Features

Photoshop CS2 introduces these enhanced features that support the needs of photographers and videographers:

**High Dynamic Range (HDR) Editing** HDR images allow for a larger dynamic range of exposures than normal digital images do. HDR (or 32-bit) images aim to provide a tonal range wider than that of ordinary 16- or 8-bit images and closer to the shadow and highlight detail the human eye actually sees in real scenes. Photoshop CS2 has limited support for HDR images.

**Enhanced Camera Raw Support** With the Camera Raw 3 plug-in, Raw files can be pre-viewed with various settings in Bridge, opened into Photoshop or saved directly from within the Camera Raw interface. Camera Raw supports a wider range of cameras and has controls to create profiles to anticipate color shifts caused by unusual lighting situations.

**Exposure Adjustment** Photoshop CS2 has added an Exposure adjustment, along with other tools designed for use with 32-bit HDR images, that can also be applied to your standard 8-bit images. Just as you can adjust exposure when taking a picture with a camera, you can now adjust the exposure setting in Photoshop after the shot.

**Red Eye Tool** This new tool helps fix common red-eye problems with just one click.

**Reduce Noise Filter** This new command features advanced controls for addressing noise in individual channels while preserving edge detail. It is also useful for removing JPEG artifacts.

**Smart Sharpen Filter** This new filter offers the ability to counteract common kinds of blurring, as well as to apply different sharpening to shadows, highlights, and midtones.

**Lens Correction Filter** Corrects typical distortion problems caused by lenses, such as barrel and pincushion distortion.

**Spot Healing Brush** The Spot Healing Brush is a one-click retouching tool best used for small problem areas in a photo, such as dust, scratches, and other minor image flaws.

**Shadow/Highlight Correction in CMYK** This popular adjustment (see Figure 1.2), first featured in Photoshop CS, now works on CMYK images as well. It is commonly used to correct silhouetted images that are backlit or images that are washed out by a camera's flash. It's also useful for brightening areas of shadow in an otherwise well-lit image.

**FireWire Video Preview** Allows you to send a still image to a video device via FireWire connection.

Figure 1.2  
Now, the Shadow/Highlight adjustment feature can correct backlit or washed-out images in CMYK color mode.

## Design and Production Features

Photoshop CS2 features many new design and production tools that increase efficiency and accelerate work flow. They include these object-based interface enhancements:

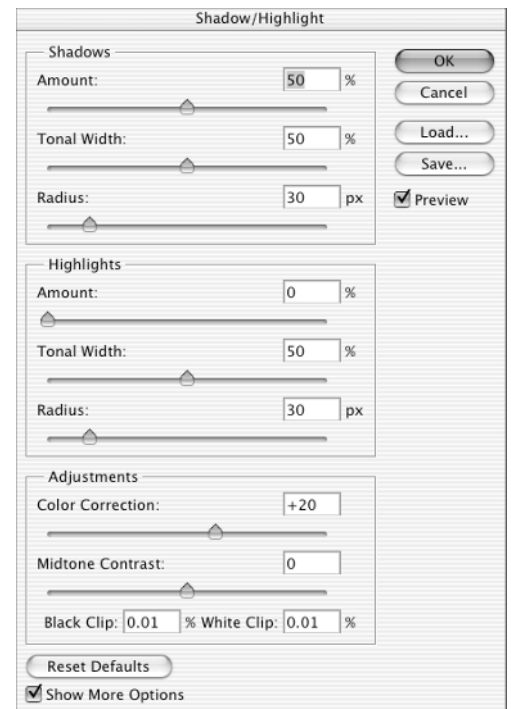
- Multiple objects can be selected on the canvas or on multiple layers by clicking the Direct Select Mode button.
- Multiple objects can be grouped.
- You can make noncontiguous selections on multiple layers by pressing Ctrl/⌘.
- You can drag to select multiple objects.
- You can drag multiple layers to the trash simultaneously.
- You can drag layer and vector masks from one layer to another.
- You can drag layer styles from one layer to another.
- Font settings of multiple text objects can be applied simultaneously.
- You can align selected objects or layers from the Options bar or with menu commands.

Some exciting new features include the following:

**Customizable User Interface** You can now customize menus and save customized sets in workspaces.

**Smart Objects** A Smart Object is group of layers or embedded files that can be resized, warped, and transformed without losing quality.

**WYSIWYG Font Menu** The name pretty much says it all. Font names are listed in the regular system font, and a sample word ("Sample") is listed next to each font name (see Figure 1.3), rendered in the font itself. Can you say "About time"?



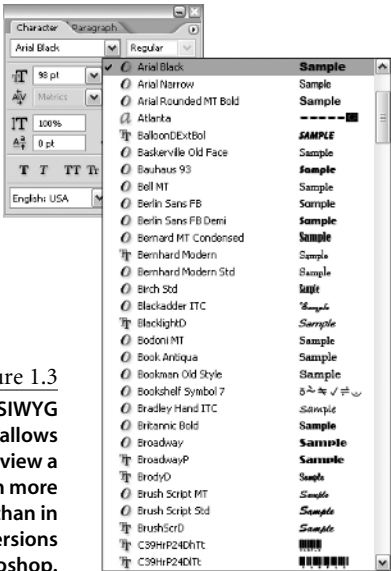


Figure 1.3  
The new WYSIWYG font menu allows you to preview a font much more easily than in previous versions of Photoshop.

**Image Warping** Photoshop now features the ability to warp any object. Layers, Smart Objects, and selections can be warped much like type in prior versions of Photoshop.

**Vanishing Point** This new feature (see Figure 1.4) lets you define perspective planes on images and then clone, paint, and transform images according to that perspective.

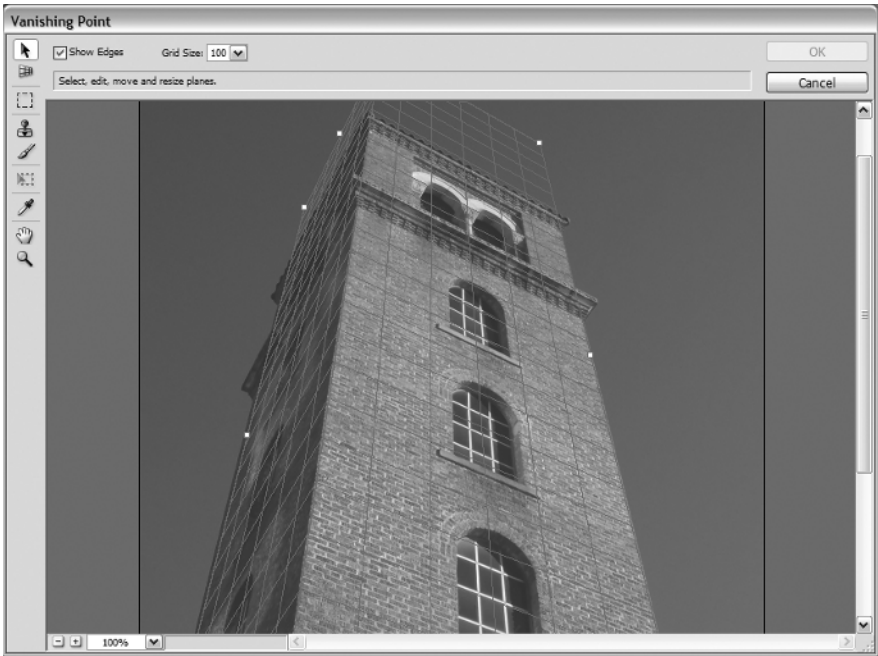
## Increased Automation

Photoshop CS2 increases the power of automation to speed your work:

**Exposure Merge** Automatically takes multiple 8- or 16-bit images and converts them into a single HDR (32-bit) image for blending, followed by conversion back to 8- or 16-bit mode.

**Image Processor** The new Image Processor (see Figure 1.5) command enables you to process multiple images at one time and save them in other formats (PSD, JPEG, TIF). This is perfect for converting a large number of camera raw images into other more compatible formats.

Figure 1.4  
Vanishing Point lets you define perspective planes on images and manipulate images based on those planes.





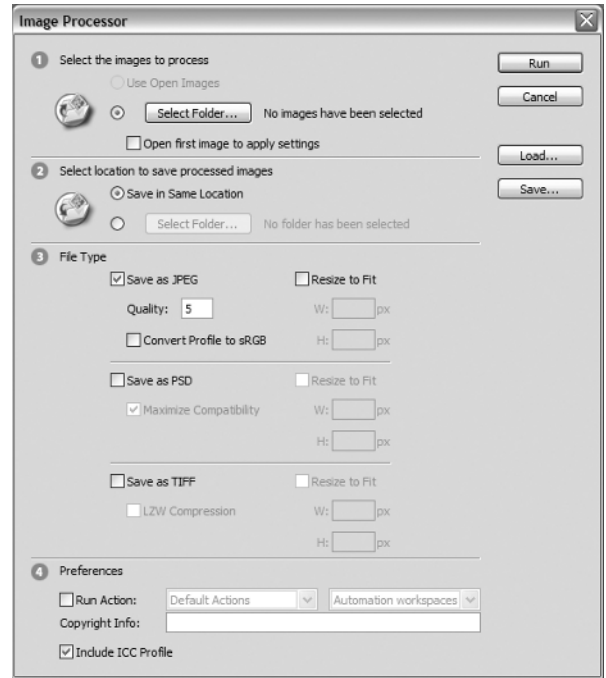
**PDF Presentation** You can save two or more images to multiple-page PDF files or create an automatic slide presentation complete with cool graphic transitions.

**Web Photo Gallery** New templates and customization features have been added to this automation. Most notable are Flash-based templates that offer greater interactivity within a gallery.

## Other New Features

Among the new features in Photoshop are a variety of items that make image editing easier and more user-friendly:

- A new welcome screen gives you access to tutorials and information about tips and tricks, color management, and new features by accessing both local and online links.
- Enhanced Info palette.
- Three new blur filters—Box, Shape, and Surface Blur—all located under the Filter → Blur menu.
- Photoshop now has access to more than 2 GB of RAM.
- Smart Guides: temporary “snap to” guides that help you create, align, edit, and transform objects relative to other objects.
- Color swatches that can be shared between Photoshop, Illustrator, and InDesign.
- The Color Replacement tool has been moved under the Brushes tool.
- Improved PDF creation.
- More consistent color management with the ability to synchronize the color management settings of all CS2 applications via controls in Bridge.
- The new Help Center is a dramatic improvement over Photoshop’s previous help feature. The new floating window with improved search features is much more usable and easy to access.
- Task-based help that addresses how to accomplish common tasks quickly.
- Layers can be linked by simply clicking them and then a button at the bottom of the Layers palette.
- Support for variables—templates for data-driven graphics used in high-volume publishing environments.



**Figure 1.5**  
The Image Processor window enables you to select a folder of images and save them in another file format.

## ImageReady Integration

Adobe is taking the first steps toward incorporating Photoshop's sidekick Web-authoring software, ImageReady, into Photoshop itself. This will mean that you'll no longer have to launch a stand-alone application for Web design-based needs. However, it's not gone yet. You can still access ImageReady by clicking the Edit In icon at the bottom of Photoshop's Tool palette.

Photoshop CS2 now includes an Animation palette (see Figure 1.6) so you can create animations without switching programs.

Figure 1.6

The Animation palette allows you to create animations directly from within Photoshop instead of switching to ImageReady.



### MY FAVORITE NEW FEATURES, BY MATT KLOSKOWSKI

I've found that most of these new features really improve the performance of Photoshop. I particularly like the WYSIWYG font menu—this is huge! To finally be able to see a preview of each font is invaluable.

I've used the Vanishing Point filter numerous times, and, believe me, I've already wasted way too many nights staying up late and experimenting with this one. The object-based user interface is another much-needed enhancement. The ability to select and work with multiple layers more easily is a huge time-saver. It's much more intuitive to work with many layers, and it really speeds up work flow in Photoshop.

Smart Objects is another favorite feature of mine. Being able to place multiple objects (from Illustrator or Photoshop) into one Photoshop object and have them automatically updated after editing the source will drastically improve the possibilities of working across the entire Creative Suite.

Finally, Bridge really kept me busy during the evaluation period. The fact that it is now a stand-alone application and doesn't interfere with my work flow and image processing in Photoshop is a major step forward. That coupled with the new stock photo service that Adobe is incorporating with Bridge will make this one of the most-used new features of Photoshop.

I think that you'll find that this upgrade of Photoshop is more than just a cosmetic facelift. Its automations can liberate you from many repetitive tasks. Its new or enhanced commands can endow you with more precision and unleash your creativity.