


Chapter | 1

Dreamweaver MX 2004 - The Basics



Welcome to Dreamweaver MX 2004! Dreamweaver is a powerful Web page creation program created by Macromedia. It's included in the Macromedia Studio MX 2004 software bundle. It's important to learn the basics and build up your skills before you start working with the more advanced features within Dreamweaver MX 2004. In this chapter, you will be introduced to some of the basic features that you'll need to be familiar with before you can start creating Web pages.

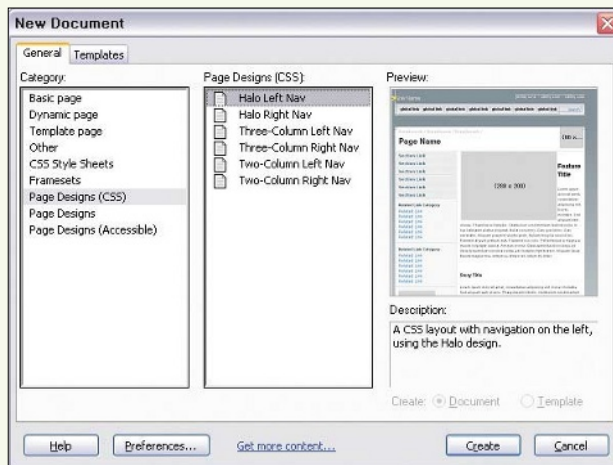
About Dreamweaver

Since its introduction, Dreamweaver has become one of the most popular Web page design programs in the world. It can be used to create and maintain an entire Web site, and is flexible enough to be used by both Web designers and programmers. In this section, you will learn about the top features in Dreamweaver, the Dreamweaver interface, and how to set up a Web site.

Key Features

Templates

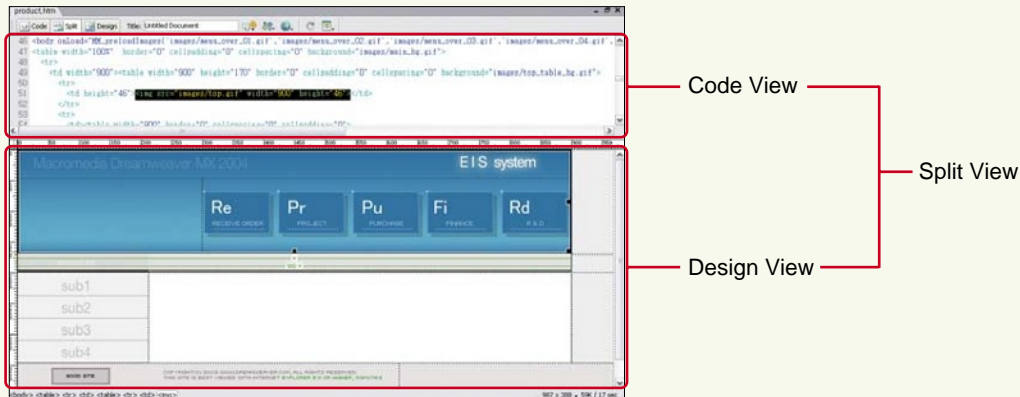
It's easy to start creating Web pages in Dreamweaver because you can choose from a number of Dreamweaver's predefined templates. You can also create your own templates. When building a Web site with many pages, templates save you time by letting you create new Web pages while maintaining a uniform look.



Using Templates to Create a New Web Page

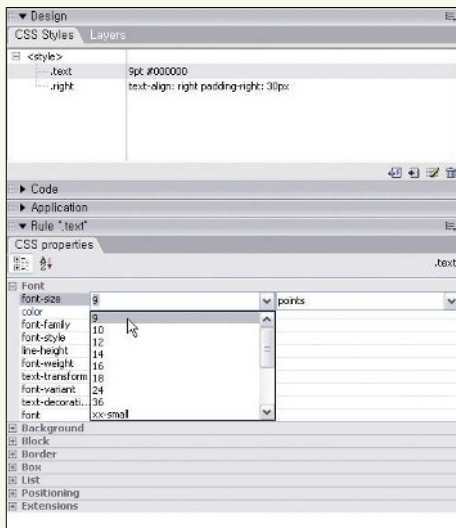
Document Views in Dreamweaver

Dreamweaver is versatile in that it supports three different views for different folks who work with Web pages: Design View, Code View, and Split View. The Design View, which is for designers and those who prefer a visual interface, shows the Web page as it will appear within a Web browser. The Code View, which is for programmers and those who are comfortable working with code, shows the HTML code for the Web page. The Split View is probably the best view to work in because it shows both the Web page and the HTML code.

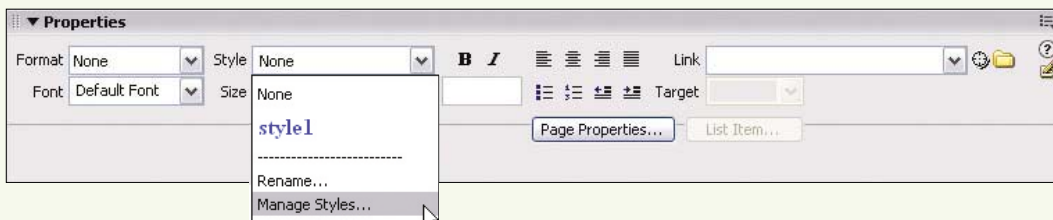


Enhanced Support for Cascading Style Sheets

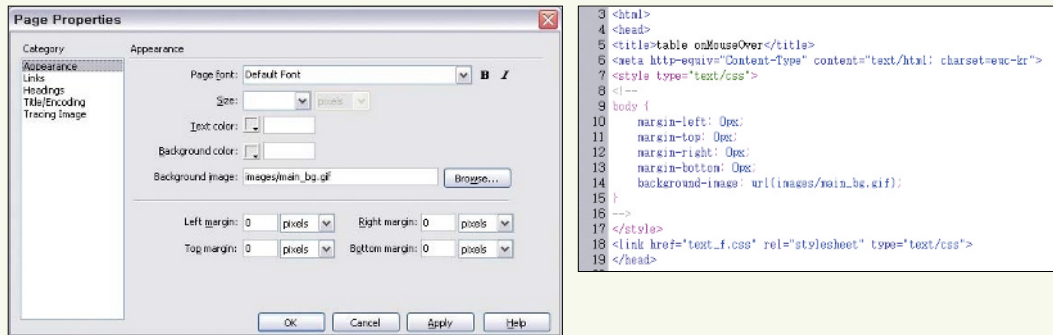
Dreamweaver lets you save a set of commonly used formatting styles, such as a specific font color and size, and apply these styles at one go on multiple Web pages. These styles are saved as Cascading Style Sheets. Dreamweaver contains a CSS Styles panel and a CSS style rule inspector (new in Dreamweaver MX 2004) to help you work with Cascading Style Sheets. The CSS Styles panel shows styles and their settings while the CSS style rule inspector (or CSS properties panel) allows you to make detailed modifications to CSS styles.



You can also work with Cascading Style Sheets using the Style drop-down box in the Properties Inspector.

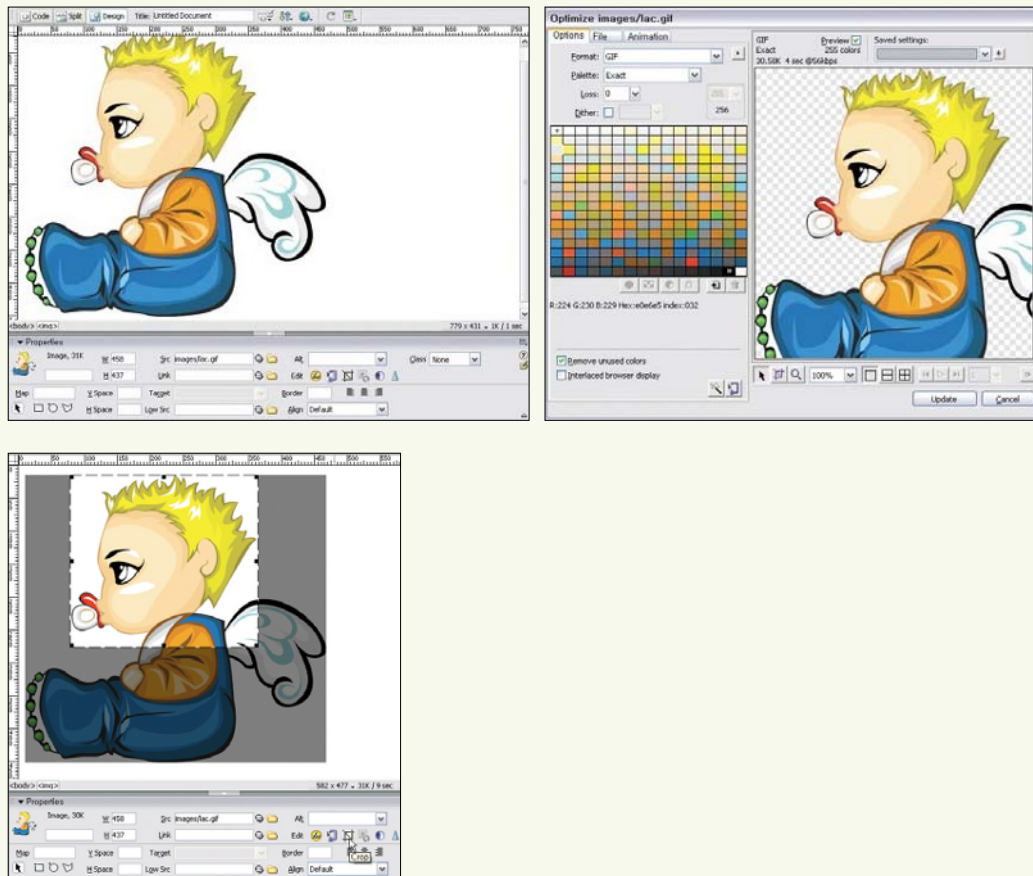


You can also use Dreamweaver MX 2004 to easily insert styles into a Web page. Select [Modify] - [Page Properties] to bring up the Page Properties dialog box. This will allow you to edit page attributes such as the font face and link styles, and automatically create appropriate styles.



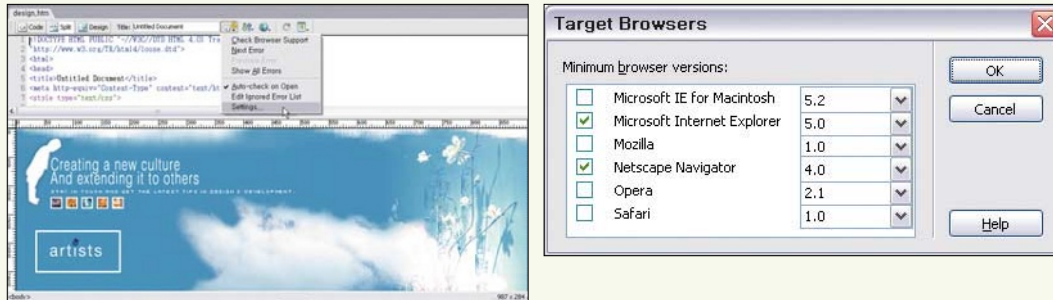
Dreamweaver and Fireworks MX 2004

Dreamweaver MX 2004 allows you to edit images using Fireworks, a graphics editing program also made by Macromedia. When an image is selected, a Fireworks icon appears in the Properties Inspector. Click the [Edit] icon (🔗) to open and edit the image using Fireworks.



Browser Testing

It is important to test each Web page in different Web browsers to make sure your pages display correctly. A browser compatibility test is automatically run when a Dreamweaver document is created. Dreamweaver uses the default browser to check that the page doesn't contain unsupported tags or other features. Unsupported features will appear underlined in red in Code view.



```
'images/images/menu_over_02.gif','images/images/menu_over_03.gif','images/images/menu_over_04.gif','image
x: width:125px; height:113px; z-index:1">
">
Over="MM_swapImage('Image2','','images/images/menu_over_01.gif',1)"><img src="images/images/menu_up_02.gif
```

FTP Security

Dreamweaver MX 2004 includes FTP functionality so there is no need to use an external FTP program. Secure FTP encrypts all transferred files and can prevent unauthorized persons from seeing the files or FTP settings.

Login: soohag

Password: ***** ☒ Save

☐ Use passive FTP

☐ Use firewall

☒ Use Secure FTP (SFTP)

☒ Automatically upload files to server on save

☒ Enable file check in and check out

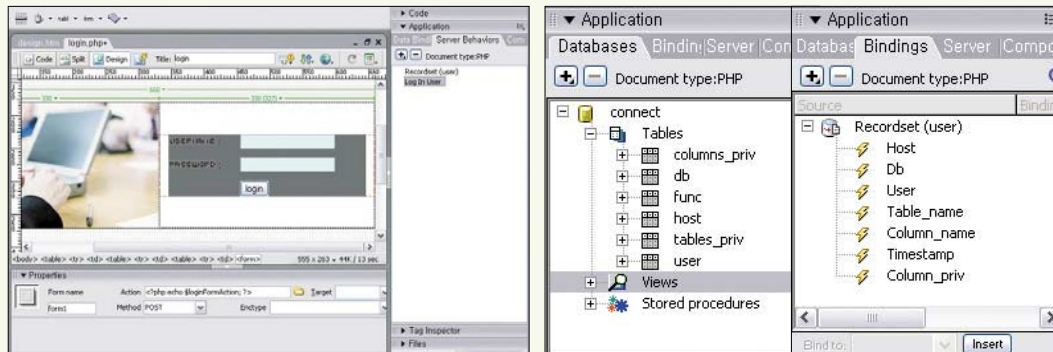
☒ Check out files when opening

Check out name: banjang

Email address: *****@hotmail.com

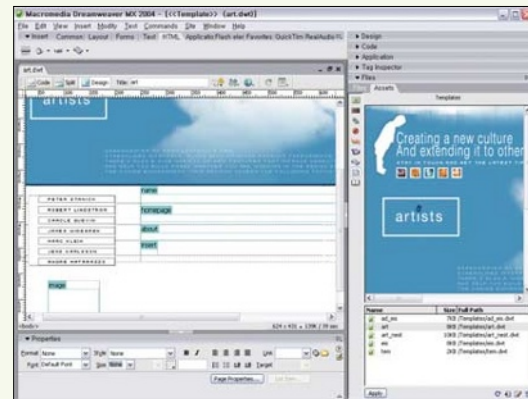
Server Behaviors

Dreamweaver is suitable for both Web designers and programmers. The features within Dreamweaver allow both groups to create Web applications. Dreamweaver supports server languages such as Cold Fusion, ASP, PHP, and JSP and allows easy connection to a database.



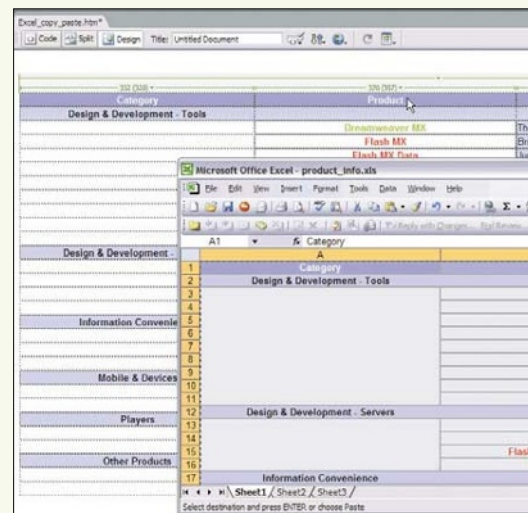
Management of Assets

The library stores assets that are used in a site, allowing you to use them over and over again as needed.



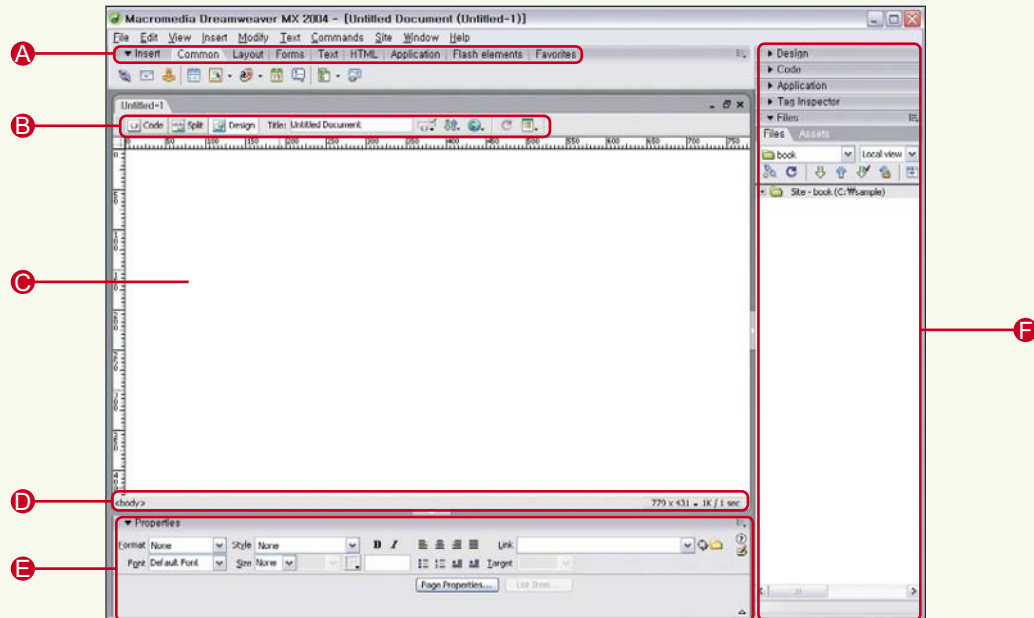
Working with Microsoft Word and Excel

Content from Microsoft Word and Excel documents can be copied and pasted into Dreamweaver MX 2004. When pasted, font and color settings from the original documents are included within Dreamweaver.



The Dreamweaver Interface

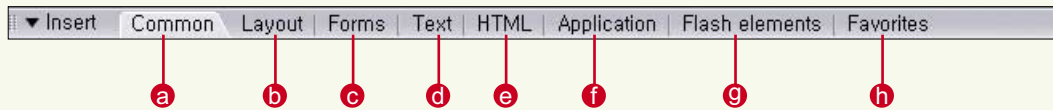
If you haven't used earlier versions of Dreamweaver, the interface can look a little complicated at first. In this section, we will look closely at the different elements that make up the Dreamweaver interface.



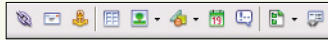
- A Insert Bar**
- B Document Toolbar**
- C Document Window**
- D Tag Selector and the Status Bar**
- E Properties Inspector**
- F Panel Groups**

A Insert Bar

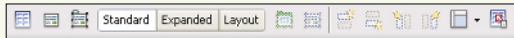
The Insert bar contains buttons in categories such as [Common], [Text], [Layers], and [HTML]. You can choose a different category from the drop-down menu on the left side of the Insert bar. When you point at a button, a brief explanation appears. Some buttons support pop-up menus. When you select an option from a pop-up it becomes the default button. Let's have a look at the different categories.



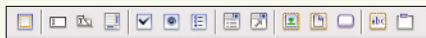
a. Common: The Common category contains buttons for inserting common objects, such as links, images, and tables.



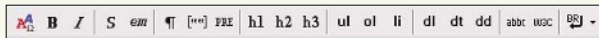
b. Layout: The Layout category is used to insert tables, div tags, layers, and frames. When working with tables, you can select from three different modes: Standard (default), Expanded, and Layout.



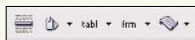
c. Forms: The Forms category includes buttons for working with forms and form elements.



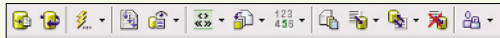
d. Text: The Text category is used to insert HTML tags that relate to text, such as formatting, paragraph, list, and heading tags.



e. HTML: The HTML category is used to insert horizontal lines, meta information, tables, frames, and scripts.



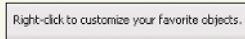
f. Application: The Application category relates to pages that contain programming languages, such as ASP, ASP.NET, ColdFusion, JSP, and PHP. There are buttons to insert programming code for recordsets; dynamic form elements; and inserting, updating, and deleting records.



g. Flash elements: The Flash elements category is used to work with Flash images.

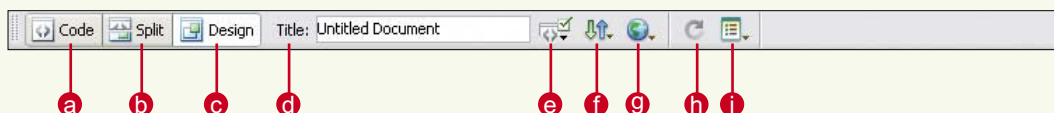


h. Favorites: The Favorites category can be customized so that it contains commonly-used buttons.



B Document Toolbar

The Document Toolbar allows you to change the way you view your document, and to make other changes, such as changing your page's title.



a. Show Code View: Shows the HTML code for the page in the Document window.

b. Show Split View: Displays both the HTML code and the page design in the Document window.

c. Show Design View: Displays the page design in the Document window.

d. Title: Shows the document title.

- e. **No Browser/Check Errors:** Checks compatibility between Web browsers.
- f. **File Management:** Brings up the File Management pop-up menu.
- g. **Preview/Debug in Browser:** Opens the document to preview it in a Web browser. You can select the browser from the menu or press [F12] to use the default browser.
- h. **Refresh Design View:** Shows any modifications made in Code View in Design View.
- i. **View Options:** Used to set visual, grid, and ruler options within the Document window.

<< tip

View Shortcuts

The shortcut keys for switching between Code View and Design View are [Ctrl]-[~] for PCs or [Command]-[`] for Macintosh computers. When Split View is shown, the shortcut keys change the focus between panes.

Ⓒ Document Window

The Document window is where you will design a Web page. The Document window can be displayed in Design View, Code View, or Split View. This is covered in detail on page 12.


Ⓓ Tag Selector and the Status Bar

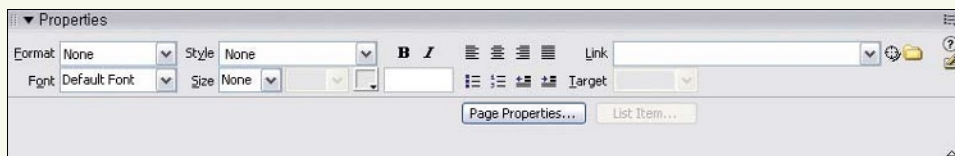
Tag Selector: The Tag Selector shows the HTML tags around the current item. Click a tag to select it and its contents. If you click the <body> tag, you can select all the contents in the document.

Window Size Pop-Up Menu: Use this pop-up menu to set the Document window to a predetermined size. You can also define your own size settings.

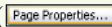
Document Size and Estimated Download Time: The right-hand side of the [Window Size] pop-up menu shows the document size and estimated download time. This includes all files within the page, such as images and other media.

Ⓔ Properties Inspector

The Properties Inspector displays the properties for the page element that is currently selected. The properties displayed in the Properties Inspector will differ depending on the element selected (e.g., text, image, layer, frame, or Flash element). By default, the Properties Inspector appears at the bottom of the work area, but it can be dragged to any location on the screen. Click (), at the top-left of the Properties Inspector and drag the window to its new location.



You can hide and show the Properties Inspector by selecting [Windows] - [Properties] or by using the [Ctrl]-[F3] shortcut keys.

The properties of the current page can be viewed by clicking the [Page Properties] button ().

F Panel Groups

There are many panels in Dreamweaver, and panels with related functions are grouped together in a panel group. For example, the Design panel group contains the CSS Styles panel and the Layers panel. When Dreamweaver starts up, the panel groups are not expanded and you won't be able to see the individual panels. Let's learn to expand panel groups and hide panels.

- Expanding or Contracting Panel Groups

Click on the [Expand/Contract] triangle (▶) on the left side of the panel group title bar.



- Displaying or Hiding Panels

To display a panel group, select the [Windows] menu from the main menu and click on the name of the panel group. Panel groups that are currently visible will show a checkmark. To hide a panel group, uncheck the panel group's name in the menu.

<< tip

Panel Shortcuts

If you are having trouble finding a panel, you can organize all the panels by selecting [Window] - [Arrange panels]. You can hide all panels by using the [F4] key. Hidden panels can be displayed by pressing [F4] again.

Setting Up Your Web Site

Depending on the type of Web site you are working on, a Dreamweaver site can consist of up to 3 different folders, namely the local folder (also known as the local site), the remote folder (or the remote site), and the testing server folder.

Setting Up a Local Site

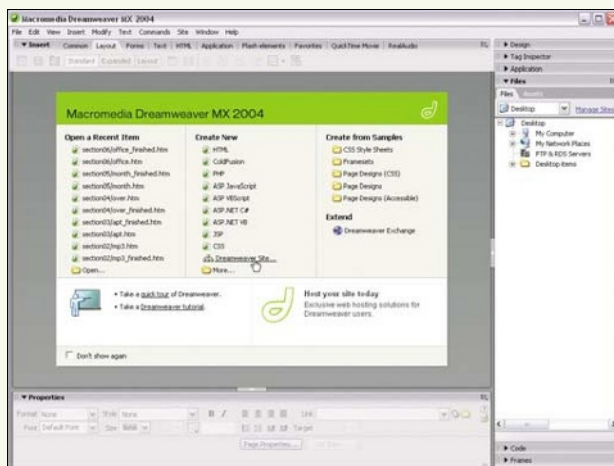
The local site can be a folder on your machine or on a network server. It is where you store all the files you are working on for the Web site. These could include text documents, images, Flash files, JavaScript files, and CSS files. When you change a file name, Dreamweaver will automatically update all other files on the local site that refer to that file. This is especially important if your Web site is very complex and has numerous interlinks.

You can define the local site in either the Basic or Advanced mode. The basic approach uses a setup wizard to help you define a local site. All you need to do is answer a few questions. If this is your first time building a Web site, you may find the basic approach less intimidating. But I would recommend that you use the advanced approach because it gives you more options.

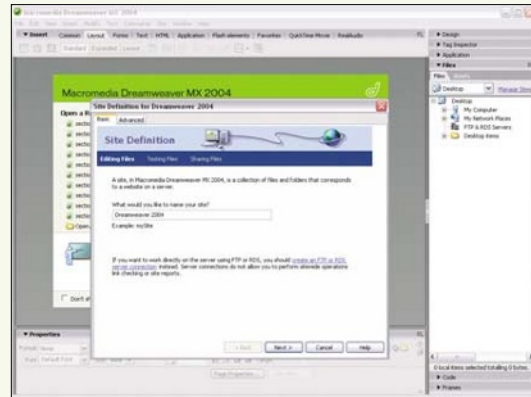
Using the Basic Approach

Let's learn to set up a local site using the basic approach.

1. On the startup screen, click on the [Dreamweaver Site...] option under the Create New menu. This launches the Site Definition dialog box.



2. Select the [Basic] tab to bring up the first screen of the Site Definition Wizard. Type in a name for your Web site and click [Next].



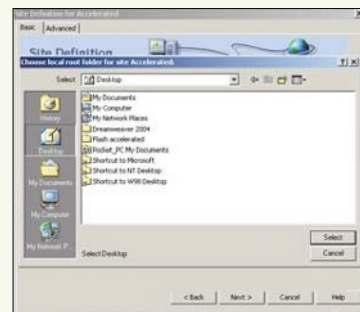
3. The next screen appears, asking if you wish to work with a server technology. Select [No] if you are working on a static Web site with no dynamic pages. (A dynamic Web page is one that lets you send or retrieve information from the Web server.) Examples include a log-in page, a search engine, or a shopping cart. Let's keep it simple for now and click [Next].



4. The next screen appears, asking how you wish to work with your Web page. Choose the recommended option—editing local copies on your machine, and then uploading them when ready.



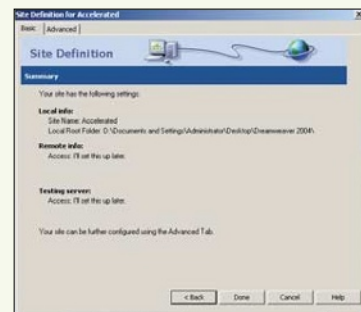
5. Click on the folder icon () to specify the local folder where you want to store your Web site files. The Choose Local Root Folder for Site dialog box appears. Navigate to a folder in the dialog box. Alternatively, you can click on the [New Folder] icon () to create a new folder. Click [Open]. Then click [Select]. The dialog box closes. Click [Next] to continue.



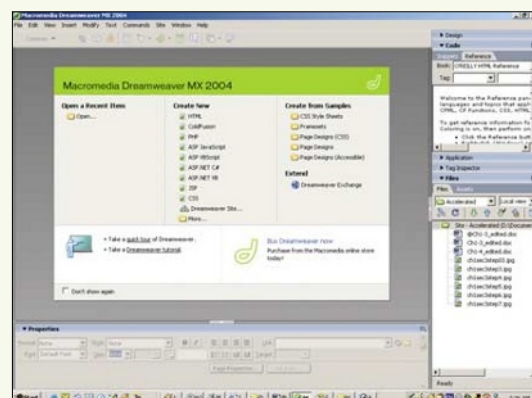
6. The next screen appears, asking how you want to connect with your server. Select [None] from the drop-down menu. You can define your connection later. Click [Next].



7. The next screen appears, showing a summary of the settings you have specified. Click [Done].



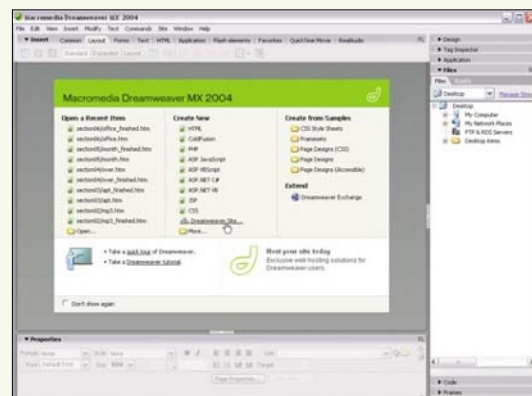
8. In the Files panel, you will see the root folder of your new Web site. You will also see all the files in the root folder, if you have any. You are now ready to start adding Web pages, folders, and images to your Web site.



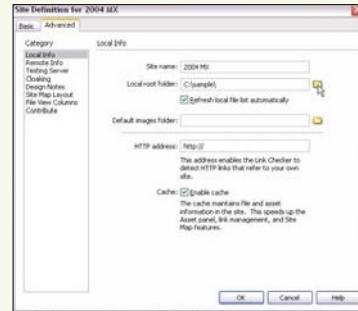
Using the Advanced Approach

Another way of setting up a local site is to use the advanced approach. Let's learn to do this.

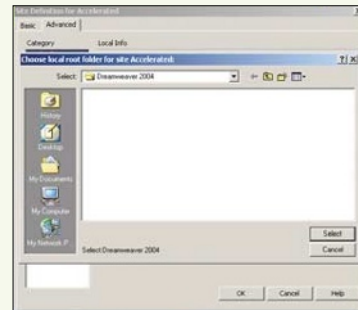
1. On the startup screen, click the [Dreamweaver Site...] option. When the Site Definition dialog box appears, click on the [Advanced] tab.



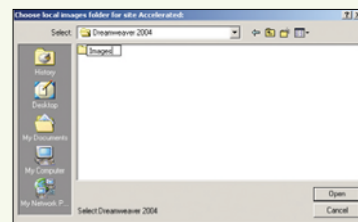
2. Check that the Local Info option under Category is selected. On the right of the Category menu, you will see the options available for the Local Info category. Type in a name for your Web site in the Site Name field. Click on the folder icon (📁) next to the Local Root Folder field to specify the local folder where you want to store your Web site files.



3. The Choose Local Root Folder for Site dialog box pops up. Navigate to a folder in the dialog box. Alternatively, you can click on the [New Folder] icon (📁) to create a new folder. Click [Open] and then click [Select]. The dialog box closes. Click [Next] to continue.



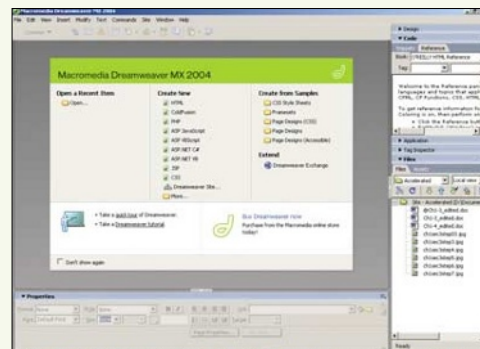
4. Click on the folder icon (📁) next to the Default Images Folder field to create or select a default folder for storing images for your Web site. Make sure that you choose a folder inside the local root folder.



5. Type in the URL (Web address) of your Web site. Click [OK].



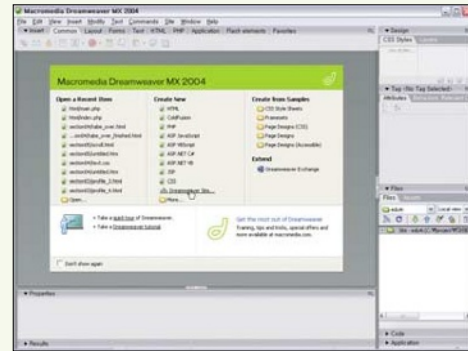
6. In the Files panel, you will see the root folder of your new Web site. You will also see all the files in the root folder, if you have any. You are now ready to start adding Web pages, folders, and images to your Web site.



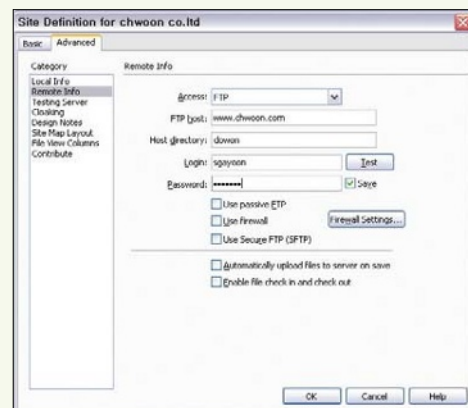
Setting Up a Remote Site

A remote site is a directory on a Web server that is hosting your Web site. To make your Web site accessible on the Internet, you need to set up a remote site. You then need to upload your Web site to the Web server through a process known as File Transfer Protocol, or FTP. This section describes how you can set up and connect to a remote site, as well as upload and download files from a remote site.

1. Open the Site Definition dialog box. As shown in the preceding pages, you can do this by either selecting [Dreamweaver Site...] - [Advanced] from the startup screen, or by selecting [Site Menu] - [Manage Sites] - [Edit] from the Files panel.



2. Click on the Remote Info option under Category. Select FTP from the Access drop-down menu. Next, type in the address of the Web server (in the FTP Host field), your site's directory path on the Web server (in the Host Directory field), your login name, and your password.

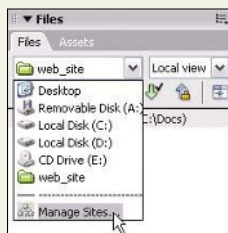


<< tip

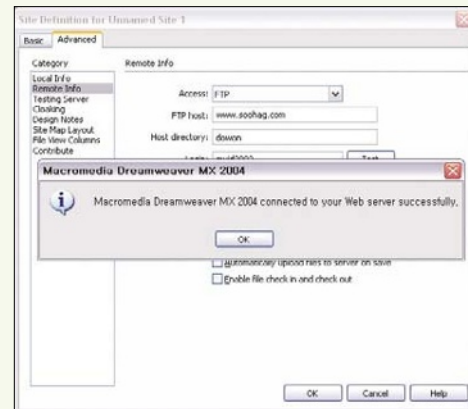
Making Changes after Setting Up the Site

You can easily modify the information of a site you have defined previously.


- 1 In the File panel, click on the drop-down site menu and select Manage Sites. This opens up the Manage Sites dialog box.
- 2 Select your site and click [Edit]. This opens up the Site Definition dialog box. Make the changes and click [OK] to close the dialog box.
- 3 Click [Done] to close the Manage Sites dialog box.

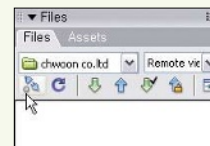



3. Click [Test]. A message box will pop up to tell you if you have succeeded in connecting to the remote server. Click [OK]. The remote site is now set up.

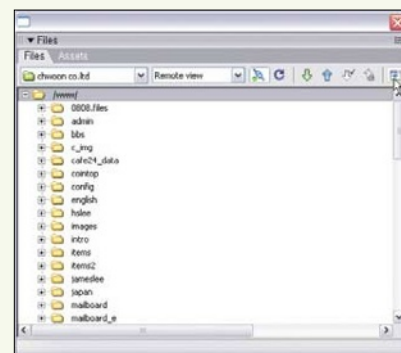


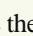
Connecting to the Remote Site

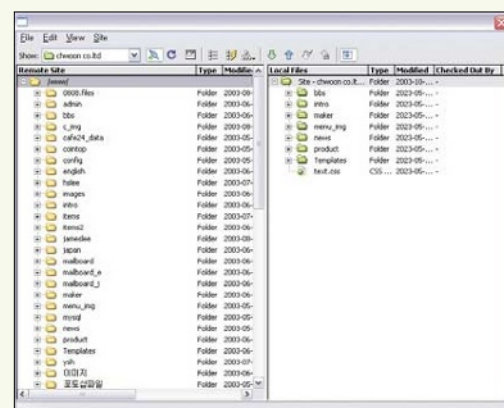
1. After setting up the remote site, click the [Connects to Remote Host] icon () on the Files panel toolbar.



2. If you've set up the remote site correctly, you will see the contents of the remote site's host directory. Click the [Expand/Collapse] icon () to expand the Files panel.




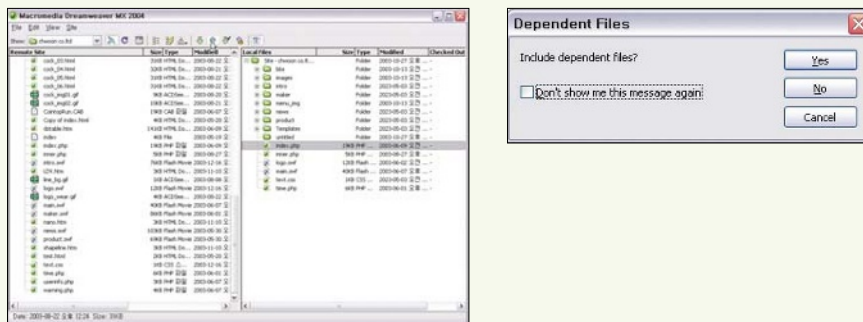
3. When expanded, the Files panel displays the contents of your site on the remote server on the left, and the contents of your site on your computer on the right. To return to the original view, click the [Expand/Collapse] icon () to collapse the panel.



Uploading a File to the Remote Site

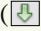
After you have created a Web site, you need to make it available on the Web by uploading the files for the Web site onto the remote site. If you later make changes to some Web pages, you will need to update the Web site by uploading the amended files on the remote site.

1. Connect to the remote site.
2. Select a file from the local site list on the right window and click the [Put] icon () on the Files panel toolbar. The Dependent Files dialog box appears. Dependent files are images and other files that are associated with the file you are uploading. If you are uploading a Web page to which you have added new images, for example, click [Yes]. Click [No] if you have only made modifications to the page's source code and not to the documents, images, or Flash files. This reduces the uploading time considerably.



Downloading a File from the Remote Site

If you need a copy of your Web site, you can download the files for your Web site from the remote site.

1. Connect to the remote site.
2. Select a file on the remote site list and click the [Get] icon () on the Files panel toolbar. The Dependent Files dialog box appears. Click [Yes] to download all the files associated with the file you are downloading.

<< tip

FTP Program

You need an FTP program for uploading and downloading files to and from the remote Web server. Although you can use an independent FTP program, the FTP program included in Dreamweaver MX 2004 is optimized for building Web sites and is a lot more convenient to use.