





**A**s the chilly days of winter approach the queen of the snowflakes begins her journey. She travels the land with snow and frost, decorating each tree branch with glittering ice crystals and covering the earth in a blanket of white. When winter brings her to your door, your little one will stay cozy and warm in this elegant ensemble.

### Coat

Knit in luscious alpaca, this lovely sweater coat is soft as a cloud and warm enough to keep out the coldest chill. Vintage styling and delicate lacey details give this coat the look of a treasured family heirloom. Put it together with the fluffy fur capelet and reversible muff to create an outfit that's truly fit for a queen.

### Capelet

This fluffy confection is the perfect winter wrap, dressy enough for holiday celebrations and comfy enough for school and play. It looks darling on little ones from 18 months to 8 years old. Made in soft faux fur, this capelet will keep your child snug for years to come.

### Muff

Your little girl will feel like a princess with her hands tucked inside this toasty hand warmer. It is completely reversible, soft fur on one side and wooly alpaca felt with fur trim on the other. With two layers of warmth built in, this muff is a cozy alternative to traditional mittens and gloves and is perfect for protecting little mitts from winter's icy chill.



# Coat

Although this pattern may look complicated, it's actually quite easy. The simple pattern repeat of the skirt and minimal shaping of this design make for uncomplicated and enjoyable knitting. The skirt is worked in German Herringbone stitch, an easily memorized six-row pattern repeat, and is shaped with a row of decreases at the bodice edge. The stockinette stitch bodice is worked to the underarms, where the piece is divided for the left front, the back, and the right front. Each section is then worked separately to the shoulders. Once the shoulder seams are

complete, the sleeves are worked in the round from armhole to cuff. A simple eyelet ruffle trims the sleeves and the coat collar.

## SIZES

1–2 years (2–4 years, 4–6 years)

## FINISHED MEASUREMENTS

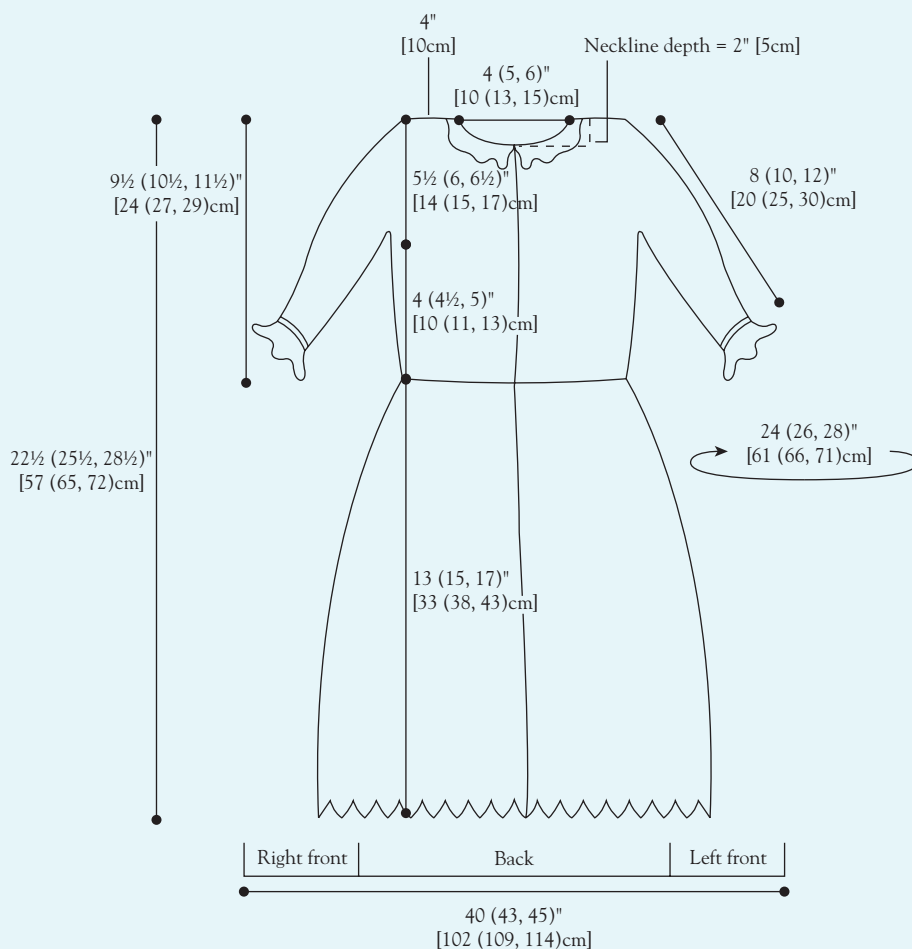
Chest: 24 (26, 28)" [61 (66, 71)cm]

Length from hem to shoulder: 22½ (25½, 28½)" [57 (65, 72)cm]

Sample size 4–6 years

## MATERIALS

Plymouth *Baby Alpaca Worsted* (100% baby alpaca; 102 yd. [93m] per 50g skein): #6074 Robin's Egg Blue, 7 (9, 11) skeins  
US 7 (4.5mm) 16" circular needle  
US 7 (4.5mm) 24" circular needle







US 7 (4.5mm) double-pointed needles  
 US 5 (3.75mm) 16" circular needle  
 US 5 (3.75mm) double-pointed needles  
 Stitch markers  
 Row counter  
 2 stitch holders  
 Tapestry needle  
 1/2" (1cm) buttons—4  
 1 yd. (1m) of 1/2" (1cm) ribbon (optional)

### GAUGE

20 sts and 26 rows = 4" (10cm) in St st using US 7 (4.5mm) needles,  
 or size needed to obtain gauge  
 24 sts and 26 rows = 4" (10cm) in German Herringbone stitch using  
 US 7 (4.5mm) needles, or size needed to obtain gauge.

### STITCH PATTERNS

**German Herringbone stitch worked flat**—(multiple of 15 sts  
 plus 2; 6-row rep)

**Row 1 (RS):** P2, \*M1, k3, p2, p3tog, p2, k3, M1, p2; rep from \* across.

**Row 2:** \*K2, p4, k5, p4; rep from \* across, end k2.

**Row 3:** P2, \*M1, k4, p1, p3tog, p1, k4, M1, p2; rep from \* across.

**Row 4:** \*K2, p5, k3, p5; rep from \* across, end k2.

**Row 5:** P2, \*M1, k5, p3tog, k5, M1, p2; rep from \* across.

**Row 6:** \*K2, p6, k1, p6; rep from \* across, end k2.

**Stockinette stitch worked flat**—Knit on RS rows; purl on WS rows.

**Stockinette stitch worked in the round**—Knit all stitches every  
 round.

**Cable cast on** (page 146)

**K2tog** (page 149)

**P2tog tbl** (page 150)

**P3tog** (page 150)

**Ssk** (page 150)

**M1** (page 149)

**Yo** (page 148)

### SPECIAL TECHNIQUES

Three-needle bind-off (page 151)

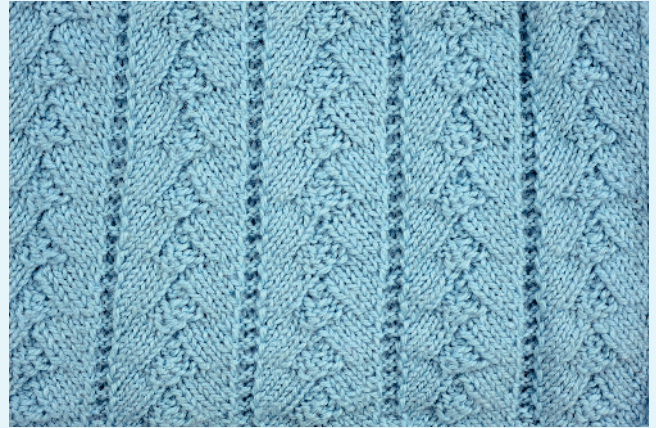
Picot bind-off (see instructions in this pattern)

## Instructions

### Coat Skirt

**NOTE:** Cast on the number of stitches below as follows: CO 2, pm,  
 \*CO 15, pm; rep from \* while casting on the number of stitches  
 below. Placing markers after every fifteenth stitch will help keep the  
 patt straight and make correcting mistakes easier.

With US 7 24" circular needle, CO 242 (257, 272) sts.



Beg with Row 1, work German Herringbone stitch for a  
 total of 72 (84, 96) rows—12 (14, 16) six-row repeats. You  
 may want to use a row counter to keep track of the patt.

**Next row (RS):** P2, \*k6, p1, k6, p2; rep from \* across.

**Gather skirt (WS):** \*P2tog; rep from \* across row to end  
 for sizes 1–2 and 4–6, for size 2–4 only end p1—121 (129,  
 136) sts. Do not cut yarn.

### Bodice

Work bodice in St st for 4 (4½, 5)" [10 (11, 13)cm] from  
 the upper edge of the skirt, ending with a WS row.

### Divide for Armholes

#### Right Front

With RS facing, knit across the first 29 (31, 33) sts of the  
 row. These stitches form the right front. Do not cut yarn.

Put rem stitches, for the sweater back and left front, on a  
 spare needle or holder to be worked later.

**Next row (WS):** P29 (31, 33) sts from right armhole edge  
 to right front opening. Continue working in St st on the  
 right front stitches only for 3½ (4, 4½)" [9 (10, 11)cm],  
 ending with a WS row. You will be working from the  
 center front opening to the armhole edge on RS rows and  
 from the armhole to the center opening on WS rows.





### Right Neckline Shaping

- Row 1 (RS):** BO 3 (4, 5) sts at neck edge, k to armhole—26 (27, 28) sts.
- Row 2:** Purl to last 3 sts, p2tog tbl, p1—25 (26, 27) sts.
- Row 3:** K1, ssk, k to end of row—24 (25, 26) sts.
- Rows 4 and 5:** Rep Rows 2 and 3—22 (23, 24) sts.
- Row 6:** Purl.
- Row 7:** K1, ssk, k to end of row—21 (22, 23) sts.
- Rows 8 and 9:** Rep Rows 6 and 7—20 (21, 22) sts.

Work without further shaping in St st until armhole opening measures  $5\frac{1}{2}$  (6,  $6\frac{1}{2}$ )" [14 (15, 17)cm], ending with a WS row. Cut yarn and put rem shoulder stitches on a holder.

### Back

With RS facing, slip the 63 (67, 70) sts for the sweater back off of the holder and onto the 24" US 7 circular needle, leaving the rem 29 (31, 33) sts for the left front on the holder for later. Join yarn and beg with a RS row, work sweater back in St st until the armhole opening measures  $5\frac{1}{2}$  (6,  $6\frac{1}{2}$ )" [14 (15, 17)cm], ending with a WS row. Cut yarn, leaving stitches on 24" needle.

### Left Front

Slip rem 29 (31, 33) sts from the holder onto the 16" US 7 needle. Beg with RS facing, join yarn at left armhole edge and knit to center front opening.

You will be working from the armhole edge to the center front opening on all RS rows and from the center front opening to the armhole on all WS rows.

Continue to work on left front in St st for  $3\frac{1}{2}$  (4,  $4\frac{1}{2}$ )" [9 (10, 11)cm], ending with a RS row.

### Left Neckline Shaping

- Row 1 (WS):** BO 3 (4, 5) sts at left neckline edge, p to armhole—26 (27, 28) sts.
- Row 2:** K to last 3 sts, k2tog, k1—25 (26, 27) sts.
- Row 3:** P1, p2tog, p to end—24 (25, 26) sts.
- Rows 4 and 5:** Rep Rows 2 and 3—22 (23, 24) sts.
- Row 6:** Knit.
- Row 7:** P1, p2tog, p to end—21 (22, 23) sts.
- Rows 8 and 9:** Rep Rows 6 and 7—20 (21, 22) sts.

Work without further shaping in St st until armhole opening measures  $5\frac{1}{2}$  (6,  $6\frac{1}{2}$ )" [14 (15, 17)cm], ending with a WS row. Cut yarn and put rem shoulder stitches on a holder.

### Shoulder Seams

With the 63 (67, 70) sts for the sweater back on the 24" US 7 needle, place the 20 (21, 22) sts for the right and left fronts on two separate US 7 dpns. Turn the coat inside out so that the RS of the work are together. Beg at the left armhole, with the back of the sweater facing you. Holding the dpn and circular needle parallel to one another, join yarn and use the 16" US 7 needle to work a three-needle bind-off across the stitches of the left shoulder, joining the stitches for the left front and the back together. Do not cut yarn. After working across the 20 (21, 22) sts for the left shoulder, continue to work across the rem stitches for the sweater back as follows. Knit (do not BO) the next 22 (24, 25) sts for the back of the neck. After knitting the stitches for the back of the neck, work a three-needle bind-off across the rem 20 (21, 22) sts for the right shoulder. Cut yarn and fasten off. Leave the 23 (25, 26) live sts rem for back of the neck on the circular needle.

### Sleeves

The sleeves are worked in St st in the round from the armhole edge. To begin you will pick up stitches along the armhole edge with RS of work facing and beg at the center underarm. Both sleeves are worked the same way, so you can work them in the order you choose.



With US 5 dpns, RS facing, and beg at the underarm, pick up 54 (58, 62) sts evenly around the armhole edge. Pm, arrange stitches evenly on dpns, and join in the round.

**Rnd 1:** Knit.

Switch to US 7 dpns.

**Rnds 2–4:** Knit.

**Rnd 5:** K1, ssk, k to within 3 sts of marker, k2tog, k1—52 (56, 60) sts.

Rep last four rounds, dec 2 sts as established every fourth round 9 (10, 11) times—34 (36, 38) sts.

Work without further shaping until sleeve measures 6¼ (8¾, 10¼)" [16 (21, 26)cm] from underarm.

### Cuff

Switch to US 5 dpns.

**Rnd 1:** Purl.

**Rnd 2:** Knit.

**Rnds 3 and 4:** Rep Rnds 1 and 2.

### Ruffle Trim

**Rnds 1 and 2:** Knit.

Switch back to US 7 dpns.

**Rnd 3:** \*K1, yo; rep from \*, end with a yo—68 (72, 76) sts.

**Rnd 4:** Knit.

**Rnd 5:** Purl.

**Rnds 6 and 7:** Rep Rnds 4 and 5.

### Picot Bind-Off

BO 2 sts, \*sl the stitch on the RH needle back to the LH needle, CO 2 sts with a cable cast on, BO 4 sts; rep from \* to end of round. Cut yarn and fasten off.

Repeat for second sleeve.

### Button Band

With 16" US 5 needle, RS facing, and beg at the upper edge of the left front neck edge, pick up 35 (41, 44) sts down to the lower bodice edge (where the skirt begins).

Knit 7 rows.

BO pwise.

### Buttonhole Band

With 16" US 5 needle, RS facing, and beg at bottom edge of the right front bodice, pick up 35 (41, 44) sts up to neck edge.

Knit 3 rows.

**Make buttonholes (RS):** \*K2, k2tog, yo twice, ssk, k5 (7, 8); rep from \* 3 times, end k2.

**Next row:** K across, knitting into the back loop of each yo from the previous row.

Knit 2 rows.

BO pwise.

### Collar

With 16" US 5 circular needle, RS facing, and beg at the right front neck edge, pick up 16 (17, 18) sts to the right shoulder seam.

K across the 23 (25, 26) sts held in reserve for back of the neck and pick up 16 (17, 18) sts from the left shoulder seam down to left neck edge—55 (59, 62) sts.

**Row 1 (RS of collar):** Purl.

**Row 2 (WS of collar):** Knit.

**Rows 3 and 4:** Purl.

**Row 5 (RS):** Knit.

Switch to US 7 circular needle.

**Row 6:** K1, \*yo, k1; rep from \* to end—109 (117, 123) sts.

**Rows 7–10:** Knit.

**Row 11:** Work picot bind-off as for sleeve cuffs.

### Finishing

Weave in all ends. Block piece.

If desired, sew ribbon facing onto WS of buttonhole band and button band to reinforce the center opening of the bodice (see the facing instructions on page 159). Sew buttons to button band opposite buttonholes.



## Capelet

Made in soft faux fur, this capelet is worked from the neck down in garter stitch rows, with raglan shaping. After the body of the capelet is complete, stitches are picked up at the neckline, and the collar is worked in garter stitch. The closure of this capelet is formed from ribbon ties, which are sewn to the front openings of the cape and topped with decorative buttons.

### SIZES

18 months–8 years

### FINISHED MEASUREMENTS

Length from back of neck to hem: 13" (33cm)

Length from front collar to hem: 12" (30cm)

Width at hem: 46½" (118cm)

### MATERIALS

Lion Brand *Tiffany* (100% nylon; 137 yd.

[125m] per 50g skein): #098 Cream, 8 skeins

US 8 (5mm) 24" circular needle

Stitch markers

Row counter

Tapestry needle

Sewing needle

Sewing thread to match yarn

⅔ yd. (.61m) of 1" (3cm) double-sided satin ribbon

2 decorative buttons in size desired

### GAUGE

16 sts and 32 rows = 4" (10cm) with double-stranded yarn in garter stitch on US 8 (5mm) needle, or size needed to obtain gauge

### STITCH PATTERNS

**Garter stitch worked flat**—Knit all stitches every row.

**Kfb** (page 148)

**M1** (page 149)



## Instructions

### Body

With two strands of yarn held together, CO 32 sts.

**NOTE:** The eight markers placed on Row 1 divide the fronts, the back, and the shoulder sections of the cape and mark the raglan “seam stitches.” While this cape contains no actual seams, it is around these stitches that the raglan shaping occurs. There are four seam stitches, one between the right front and the right shoulder, one between the right shoulder and the back, one between the back and the left shoulder, and one between the left shoulder and the left front. An increase is worked immediately before and after each of these stitches.

**Row 1:** K1 (left front), pm, k1, pm, k5 (left shoulder sts), pm, k1, pm, k16 (capelet back), pm, k1, pm, k5 (right shoulder sts), pm, k1, pm, k1 (right front).

**Row 2:** Kfb, M1, sm, k1, sm, M1, k5, M1, sm, k1, sm, M1, k16, M1, sm, k1, sm, M1, k5, M1, sm, k1, sm, M1, kfb—42 sts.

**Row 3:** Knit across row, knitting into the back loop of all increases from the previous row and slipping markers as you go.

**Row 4:** Kfb, \*k to marker, M1, sm, k1, sm, M1; rep from \* 3 times, k to last st, kfb—52 sts.

**Rows 5–10:** Rep Rows 3 and 4—82 sts.

**Row 11:** Knit.

**Row 12:** \*K to marker, M1, sm, k1, sm, M1; rep from \* 3 times, k to end of row, CO 3 sts—93 sts.

**Row 13:** Knit across row, CO 3 sts—96 sts.

**Row 14:** Sl 1, \*k to marker, M1, sm, k1, sm, M1; rep from \* 3 times, k to end of row (8 increases)—104 sts.

**Row 15:** Sl 1, k across row.

**Rows 16–31:** Rep Rows 14 and 15—168 sts.

**Row 32:** Sl 1, k5, \*M1, k6; rep from \* to end of row—195 sts.

**Row 33:** Sl 1, k across row.

**Row 34 and all rem rows:** Rep Row 33 until front of cape measures 12" (30cm) or desired length.

BO kwise.

### Collar

Beg at one of the front corners of the neck edge, pick up 52 sts along the CO edge of the cape.

**Rows 1–20:** Knit.

BO kwise.

### Finishing

Weave in all ends.

### Attach Ribbon and Buttons to Cape

Cut ribbon into two equal pieces approximately 12" (30cm) long each. Pin the ribbon to the inside edge of cape front along the neckline edge (below the collar). Position button on outside of the cape with the cape fabric sandwiched between the button and the ribbon. Sew the ribbon and the button to the cape simultaneously, going through the button, the cape, and under the backside of the ribbon. Repeat for second ribbon tie on the opposite front opening.

## Muff

The construction of this muff couldn't be simpler—it is essentially a knitted tube worked in the round. The alpaca section of the muff is knitted first, in stockinette stitch. When it is complete, faux fur yarn is joined and the remainder of the muff is worked in garter stitch. A seam at the end brings the cast-on and bound-off edges together. A quick trip to the washer for felting finishes it off—plush fur on one side and dense alpaca with fur trim on the other.

### FINISHED MEASUREMENTS

#### Before Felting

Circumference: 17" (43cm)

Width: 10½" (27cm)

#### After Felting

Circumference: 16" (41cm)

Width: 8" (20cm)



### MATERIALS

Plymouth *Baby Alpaca Worsted* (100% baby alpaca; 102 yd. [92.3m] per 50g skein): #6074 Robin's Egg Blue (yarn A), 2 skeins  
 Lion Brand Yarns *Tiffany* (100% nylon; 137 yd. [125m] per 50g ball): #098 Cream (yarn B), 3 skeins  
 US 10 (6mm) 16" circular needle  
 Stitch marker  
 Tapestry needle

### GAUGE

12 sts and 18 rows = 4" (10cm) in St st with double strand of yarn A on US 10 (6 mm) needle, or size needed to obtain gauge  
 12 sts and 20 rows = 4" (10cm) in garter stitch with triple strand of yarn B on US 10 (6mm) needle, or size needed to obtain gauge

### STITCH PATTERNS

**Stockinette stitch worked in the round**—Knit all stitches every round.

**Garter stitch worked in the round**—Knit a round, purl a round.

### SPECIAL TECHNIQUES

Felting (page 160)

## Instructions

### Felted Section of Muff

With two strands of yarn A held together, CO 50 sts.  
 Join work in the round, taking care not to twist stitches, and work in garter stitch for 4 rounds, ending with a purl round.

Work in St st for 8" (20cm).

End this section of the muff by working 4 more rounds of garter stitch, ending with a purl round. Cut yarn.

### Fur Section of Muff

Beg the fur section of the muff by joining three strands of yarn B.

**Rnd 1 and all odd rnds:** Knit.

**Rnd 2 and all even rnds:** Purl.





Continue working in garter stitch until both sections of the muff are the same length.

BO kwise.

### Assembly

Fold the muff so that the CO and BO edges are together and the knit side of the alpaca section is facing out. Pin in place along the open edge of the muff. Thread a tapestry needle with yarn A, and sew the two edges together.

### Finishing

Weave in all ends.

### Felting

Turn the muff so that the yarn A side is facing out. Felt the muff in the washing machine as directed in the “Special Techniques” section. Once the muff is the desired size, pull it into shape and block it by stuffing it with plastic bags so that it maintains a cylindrical shape. Air dry the felted side then turn the muff inside out to air dry the furry side. Once dry, the fur can be fluffed up by hand or with a soft brush.

