

# Part I

## Laying the Groundwork in Dreamweaver CS4

### IN THIS PART

Chapter 1  
What's New in Dreamweaver CS4

---

Chapter 2  
Introducing Dreamweaver CS4

---

Chapter 3  
Touring Dreamweaver

---

Chapter 4  
Setting Your Preferences

---

Chapter 5  
Setting Up Sites and Servers

---





# Chapter 1

## What's New in Dreamweaver CS4

**L**ooking over the new feature set of Dreamweaver CS4, you get the feeling that when the engineering team first starting working, its motto was “Everything is on the table.” The latest version of the world’s best-selling Web authoring tool has undergone major revisions, from a complete facelift to implementing a whole new way of working.

The enhancements in Dreamweaver CS4 largely reflect the state of the Web: today’s Web designer works hard to integrate multiple technologies—like CSS and advanced JavaScript—into a seemingly effortless design. The new version of Dreamweaver brings complex, compound Web pages into focus with browser-true rendering and pinpoint coding. It seems clear to me that the Dreamweaver team is consciously going after higher-end coders with a number of the new features, like extended support for JavaScript, including external popular frameworks. These enhancements, however, do not leave visually oriented designers behind. Rather, they lay the foundation for more drag-and-drop goodness, such as the new Web widget possibilities.

And speaking of changes to entice the design-minded, Dreamweaver CS4 is much more integrated into the Adobe Creative Suite than ever before. Now it’s much easier for Web designers, whether they are one-person shops who must (and want to!) master all the tools in the Adobe tool chest or members of a site-building team who have to contend with ever-changing comps and graphic elements. Dreamweaver keeps its place on the cutting-edge by extending a branch to new technologies like Adobe AIR and services such as InContext Editing.

The other strong trend in Dreamweaver CS4 is the continuation of the march toward Web standards. Not only has CSS been integrated even more tightly into the workflow, notably in the Property inspector, but the call to separate interactivity (that is, JavaScript) from content has begun to be heeded.

### IN THIS CHAPTER

**Mastering modern Web workflows**

---

**Enhanced Creative Suite 4 integration**

---

**Web standards implementations made easier**

---

**Connecting with Adobe services**

---

Overall, if I had to sum up my impressions of Dreamweaver CS4 in one word, it would be “professional.” Dreamweaver has truly stepped up its game to keep pace with the shifts in the Web design climate while at the same time remaining accessible to the full spectrum of developers. That’s the attitude of a true professional, and Dreamweaver CS4 has it in spades.

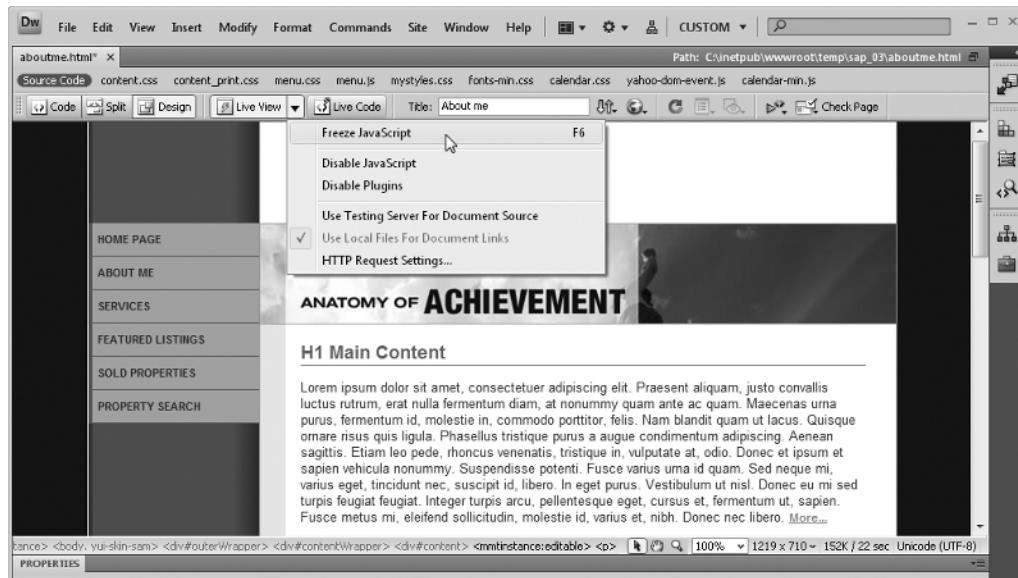
## New Workflows

Perhaps the most visionary aspect of Dreamweaver CS4 is the enhanced workflow made possible by three interconnected features: Live view, Related Files, and Code Navigator. Designed to accommodate the needs of the more code-centric designer, the new workflow in Dreamweaver CS4 combines real-world browser rendering with direct code access across the full range of associated documents that increasingly make up today’s Web page.

Live view displays the current page just like a modern browser such as Apple’s Safari or Google Chrome. It should: Live view uses the same open source engine, WebKit, as those browsers. With the new Related Files bar, the code in linked files—whether external CSS, JavaScript framework, or server-side include—is just a click away. Remarkably, with the one-two punch of Live view and Related Files, you can freeze JavaScript to review and modify the interactive states of your code, as shown in Figure 1-1.

**FIGURE 1-1**

Inspect interactive states like menu rollover with Live view’s Freeze JavaScript option.



The third feature, Code Navigator, brings immediacy to your coding never available in Dreamweaver before. Use the Code Navigator to jump directly to any CSS rule affecting the current selection, no matter whether you're working in Design, Code, or Live view.

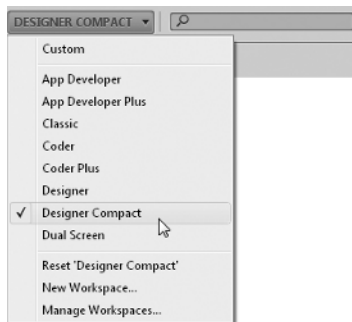
## Expanded Integration

In many ways, Dreamweaver is a true destination product. Whether you develop your Web content in Photoshop, Fireworks, or Flash, you have to go through Dreamweaver to reach the Web. Dreamweaver CS4 reflects this centerpiece status thoroughly with its shiny new user interface and heightened cross-product integration. It's obvious that Adobe's vision for all of its Creative Suite products is one of harmony and fluidity. All user interfaces across the Creative Suite product line, including Dreamweaver, have been overhauled to achieve a cohesiveness and consistent workflow.

All panels in Dreamweaver, like those in Photoshop and Flash, now iconify or expand with a single click. Like the others, Dreamweaver includes a Workspace Switcher for customizing your design environments (see Figure 1-2). All user interface elements across Creative Suite 4 are a uniform neutral gray, which light up with a splash of color when selected.

**FIGURE 1-2**

With the new Workspace Switcher you can quickly apply one of eight interface layouts or create your own.



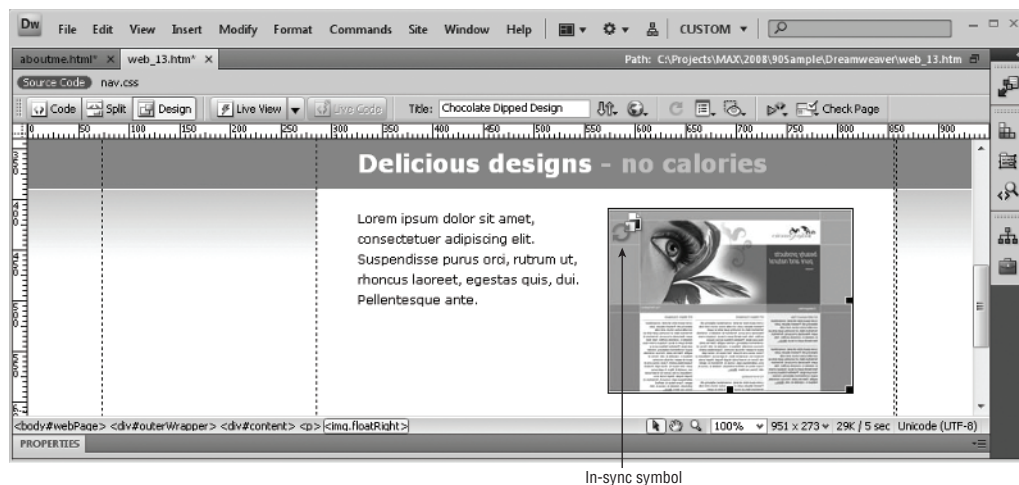
The integration enhancements in Dreamweaver CS4 are far more than skin deep. The bond between Adobe Photoshop and Dreamweaver is now much tighter than ever. Dreamweaver CS4 builds on the connectivity established in the previous version, where cross-product copy/paste functionality and conversion of PSD format files to Web-ready files was added. Now, any graphic from a Photoshop source file becomes a Smart Object when placed in a Dreamweaver page. Smart Objects are “source-aware” and, when first inserted, identified with an in-sync indicator in the upper-left corner of the graphic, as shown in Figure 1-3. Should the source file be modified, the in-sync symbol becomes an



out-of-sync one. Designers can decide, on a case-by-case basis, whether or not to update the Web page image. For example, if an image has been rescaled in Photoshop, the updated graphic is resampled in Dreamweaver to match the new dimensions.

**FIGURE 1-3**

The Smart Object sync indicator is all green when the Photoshop source and Dreamweaver graphic instance are the same; when the Photoshop file is modified, it becomes half-red and half-green.

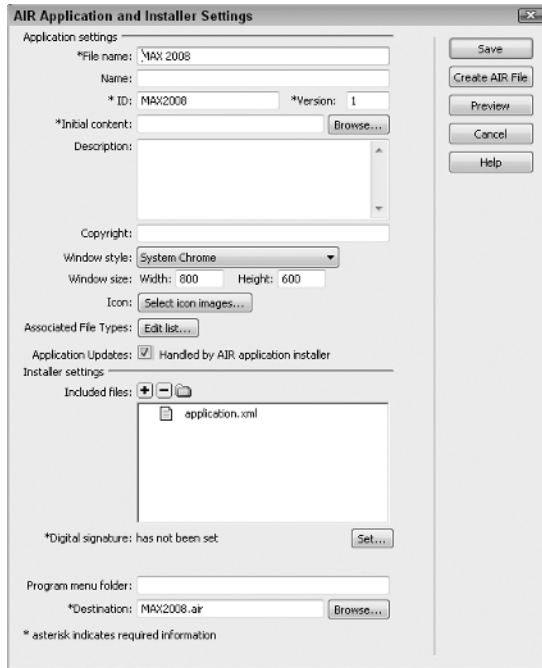


Adobe Flash is another of Dreamweaver's power partners in Creative Suite 4. For Dreamweaver CS4, dropping in a SWF or FLV (Flash video) file is just as easy as ever. However, the underlying code has been upgraded to Web standards level. Now, rather than relying on the outdated method of nesting a deprecated `<embed>` tag inside a standard `<object>` tag, an external JavaScript library is used; the final result passes validation with flying colors. Dreamweaver also now incorporates Flash version detection and an express installation script to bring site visitors up-to-speed quickly. Moreover, you can now easily display and modify the message presented to those who don't have the needed version for viewing your Flash movie or video.

Adobe AIR has opened new doors for Web developers whether they're working in HTML and JavaScript or Flash and Flex. AIR projects can be launched from the desktop and connect to the Web occasionally or not at all. There is even a persistent data source available. Dreamweaver offers a direct bridge to creating AIR apps: just download and install the latest version of the AIR extension and you can preview your application from within Dreamweaver for testing and debugging purposes, as shown in Figure 1-4. Once you're ready, Dreamweaver offers AIR packaging and code-signing features.

**FIGURE 1-4**

Test your AIR application without leaving Dreamweaver through the AIR extension.

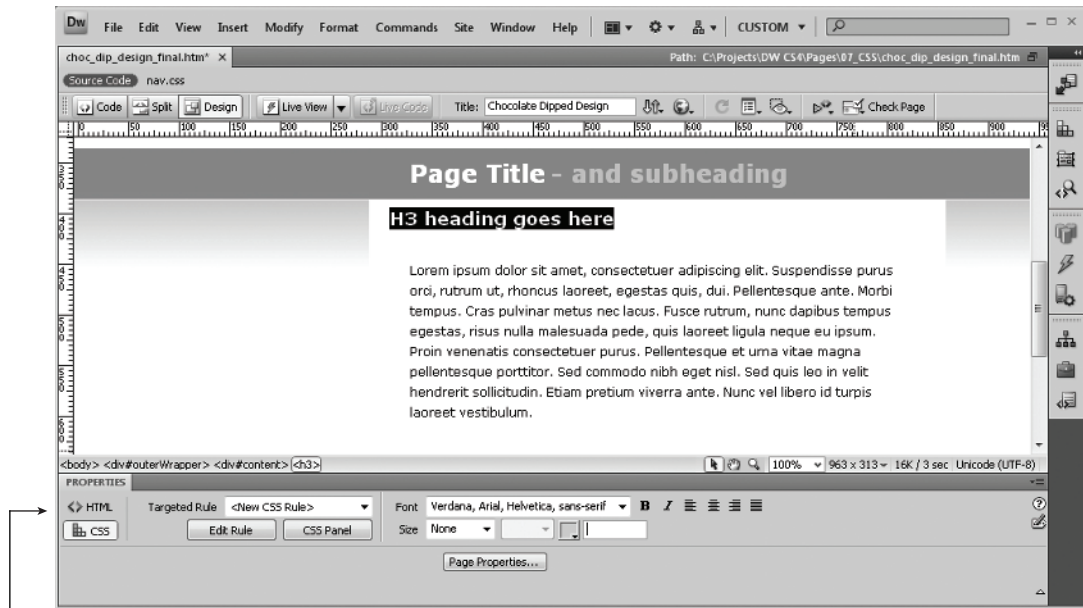


## Modern Web Practices

Not only does the new Live view render CSS stylings with great fidelity, Dreamweaver CS4 has also enhanced the way CSS rules are created, modified, and applied. To achieve a smoother workflow, the Property inspector has been split into two tabs, one for HTML properties and the other for CSS. Place your cursor anywhere on the page in Design or Code view, and the CSS tab of the Property inspector displays the relevant CSS rule, as shown in Figure 1-5. Dreamweaver no longer creates styles automatically—instead, the designer is presented with a targeted selector, which can be made less specific, if desired. The revised New CSS Rule dialog box with its plain language selector description is a great learning tool for better understanding the complexities of CSS. Modifying text-related properties with the Dreamweaver CS4 Property inspector is now much faster and more consistent, which will make it easier for Web designers to follow best practices when styling their sites.

FIGURE 1-5

The revamped Property inspector identifies the existing rule for the current selection and makes it easy to modify related properties or create a new CSS rule.



Property inspector's  
HTML and CSS tabs

One of the biggest innovations in the previous version of Dreamweaver, the JavaScript framework known as Spry, continues to evolve. Now, it's easier than ever to incorporate external data into Ajax-driven pages. The X in Ajax stands for XML and, while Dreamweaver still supports the integration of XML data sets, it now also can work with HTML data. Whether you set up your data in a table of images and text or a series of divs or lists, the completely revamped Spry Data Sets feature can handle it. Step through a wizard-like interface to identify data columns, define data types, and even format the output data. Spry Data Sets are a major advance for designers looking to make their pages more interactive and take advantage of modern Web practices.

In addition to Spry Data Sets, other Spry enhancements have been included in Dreamweaver CS4. The new Spry Tooltip object brings additional, optional information to your Web pages. The Spry Tooltip can be applied to any element on the page, such as a text phrase or image, and not just a link. You also have control over the tooltip's look-and-feel (Figure 1-6) as well as its method of entrance and exit. New Spry form elements have also been introduced. The new Spry Validation Radio Group widget simplifies the process for placing a series of options in a form and making sure



site visitors choose one. With the Spry Validation Password widget, you can specify the required strength of a password that the user might enter—with a set number of numbers, uppercase or lowercase letters, and more—and display an error if your criteria is not met. Use the Spry Validation Confirm widget to verify a previous input for password, email, or any other type of text field.

While the line of Spry widgets directly available from within Dreamweaver continues to grow, Dreamweaver CS4 introduces an entire universe of widgets from other frameworks with its Web widgets functionality. A host of other JavaScript frameworks are available online, many of which have extensive support, such as YUI, jQuery, and Moo Tools. Dreamweaver CS4 now recognizes these widgets when they are installed through the Adobe Extension Manager CS4. Initial widgets available from the Adobe Exchange include calendars (see Figure 1-7), sliders, slideshows, and much more. To further Web widget development, Adobe has released a Dreamweaver extension that packages XML and JavaScript files into the proper Extension Manager format, which is available from Adobe Labs: [http://labs.adobe.com/wiki/index.php/Dreamweaver\\_Widget\\_Packager](http://labs.adobe.com/wiki/index.php/Dreamweaver_Widget_Packager).

**FIGURE 1-6**

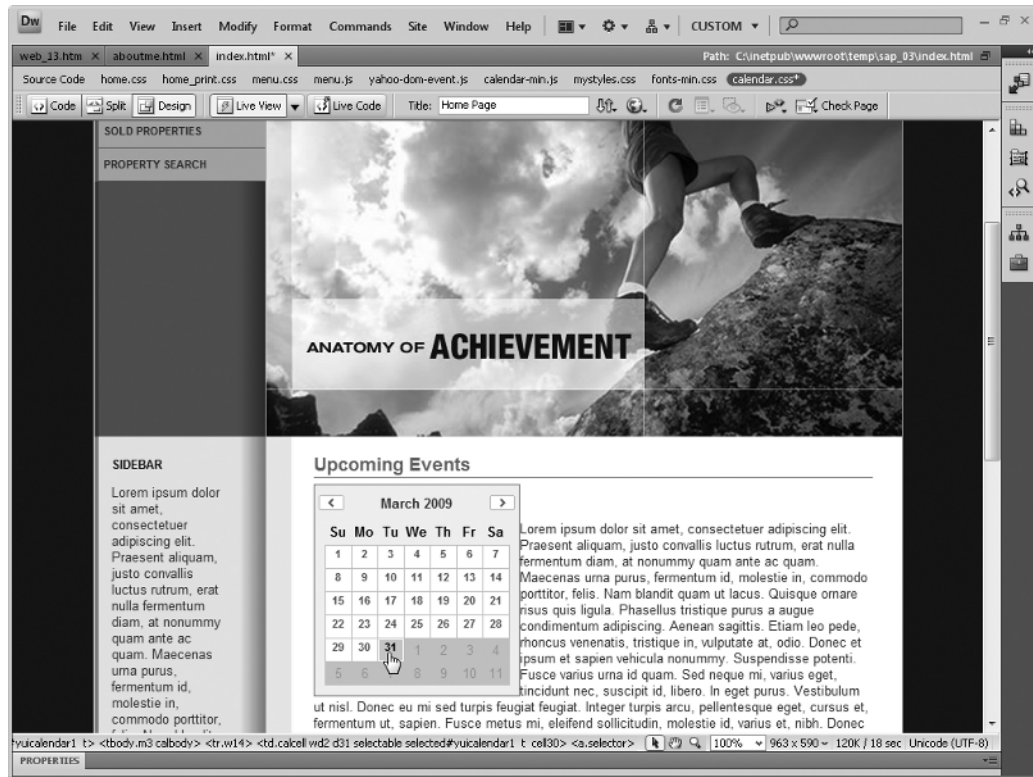
Style your Spry Tooltip with CSS and then preview it in Dreamweaver's Live view.



To support these Web widgets on the code-level, Dreamweaver CS4 has seriously beefed up its JavaScript support. Now, imported frameworks like jQuery or Prototype can benefit immediately from code hinting and syntax coloring. This improvement really speeds up manual coding and helps developers better understand the syntax of external JavaScript libraries. The enhanced JavaScript support extends to DOM (Document Object Model) functions and even custom functions, whether embedded in the page or linked from an external file.

FIGURE 1-7

This YUI calendar widget was added to Dreamweaver's Insert panel and can be easily previewed in the new Live view.



Just as CSS trumpets the separation of content and presentation, a movement known as *unobtrusive JavaScript* is underway to separate interactivity from content. When a page employs unobtrusive JavaScript, all of the code functions are removed to an external file and linked from the HTML source file. Additionally, event triggers like `onClick` are replaced with a combination of CSS classes and DOM manipulation. Dreamweaver CS4 includes a command to either externalize your JavaScript or replace the event triggers or both on a page-by-page basis. Although extracting JavaScript from a page is not for everyone, its feasibility and ease-of-use is a big plus for many Web-page coders.

For coders who work on team projects—or even large-scale development projects by themselves—the new support of Subversion is most welcome. Subversion is an open source version control system that not only tracks changes made to any file, but also allows multiple developers to work independently and collaboratively without stepping on each other's toes. In Dreamweaver CS4 Subversion support is integrated into the Site Definition dialog box and the Files panel with built-in features like diff, for comparing two files, and revert, for rolling back your files to a previous version.

## New Adobe Services

---

In an increasingly online world, it's only natural that network services begin to play a larger role in the life of every Web developer. For the CS4 release, Adobe has introduced a number of such services, the most notable of which is InContext Editing. When a Web page has InContext Editing enabled, the owner of the site can make changes to the page right in her Web browser—without downloading or installing any additional software. Dreamweaver CS4 includes all you need to create InContext Editing—powered pages and define editable regions with specific editing capabilities, or include repeating regions for content, like event listings that closely follow a precise format.

Dreamweaver CS4 also contains a direct link to another Adobe service: ConnectNow. Choose File ⇨ Share My Screen to start the ConnectNow service. You'll need an Adobe ID to participate, but once you've signed up, you can easily share your screen with your clients to give them a real-time demonstration. In addition to screen sharing, ConnectNow also features voice-over-IP, a collaborative white board, webcam connectivity, chat, and shared files. Each ConnectNow session has a unique, customizable URL so you can invite your clients to your session via email or IM very easily.

## Summary

---

Whether you're just starting out as a Web designer or are a seasoned professional coder, Dreamweaver CS4 has something for everyone.

- Three interconnected features—Live view, Related Files, and Code Navigator—enable a new powerful workflow that combines real-world browser rendering with direct code access.
- Tight integration across the Adobe Creative Suite 4 line, including Dreamweaver, makes moving from one product to the next a snap. Common user interface elements flatten the learning curve and enhanced connectivity with Adobe Photoshop keeps source and Web graphics in sync.
- Standards-based sites are easier than ever to create with Dreamweaver CS4, thanks to improved CSS handling in the Property inspector, a revised CSS rule definition process, and the ability to implement unobtrusive JavaScript techniques.
- New Adobe services give you a more direct connection to your Web site clients. InContext Editing makes it possible for your clients to modify their pages right in the browser, while the ConnectNow service enables you to share your designs with your clients online without leaving Dreamweaver.

In the next chapter, you get an in-depth tour of Dreamweaver's features.



