

# ACCESSORIES



COPYRIGHTED MATERIAL





WINDANSEA  
sun hat



# WINDANSEA

## sun hat

by Kristi Porter

On bright, sunny days, I'm underdressed without a sunhat. I hadn't thought to knit one until I started thinking of designs for this book. Inspired by Annie Modesitt's knitted millinery, I decided to give it a go. I've always loved the simple organic spirals created by regular decreases on the crowns of hats and decided to play them up on this lovely, light sunhat. This sunhat provides just enough cover to keep the sun off your face, but never feels hot or heavy.

## pattern notes

This pattern uses millinery wire to support the broad brim. You can find it online and in some craft stores. You can also substitute any other sturdy, rustproof wire.

## directions

CO 192 (200) sts on circular needle. Join to knit in the round, being careful not to twist sts.

### brim

**Set-up Round:** \*K24 (25), place marker (pm), rep from \* around, using contrasting marker last to indicate the end of round.

**Round 1:** \*K to 3 sts before marker, yo, sk2p, slip marker (sm), rep from \* around.

**Round 2:** Knit.

Rep these 2 rounds until 80 (88) sts rem. There will be 10 (11) sts between each set of markers.

### SIZE

S (L)

To fit 20–22 (22–24)" circumference heads

### FINISHED MEASUREMENTS

Outside circumference, stretched:  
42 (44)"

Inside circumference, unstretched:  
16 (17½)"

### MATERIALS

- Berroco *Seduce* (47% rayon, 25% linen, 17% silk, 11% nylon; 100 yd. per 40g skein); color: 4448 Verdigris; 2 (2) skeins
- US 6 (4mm) circular needle, 16" length (or size needed to match gauge)
- US 6 (4mm) double-pointed needles
- Size G (4mm) crochet hook
- 50" length of 18-gauge millinery wire, or other similar wire

continued ►



► **continued**

- 1 package K1C2 Rainbow Elastic Thread (3mm Bulky; 25 yd. per package); color: 60  
*(Use a color that matches or is slightly darker than your yarn.)*
- 8 stitch markers, 1 contrasting
- Tapestry needle

**GAUGE**

20 sts × 28 rows = 4" in St st

**SKILLS USED**

double-pointed needles, knitting in the round, decreasing, yarn overs, single crochet

---

## body of hat

**Round 1:** \*K8 (9), yo, skp, sm, rep from \* around.

**Round 2 and all even rounds:** Knit.

**Round 3:** \*K7 (8), yo, skp, k to marker, sm, rep from \* around.

**Round 5:** \*K6 (7), yo, skp, k to marker, sm, rep from \* around.

**Round 7:** \*K5 (6), yo, skp, k to marker, sm, rep from \* around.

**Round 9:** \*K4 (5), yo, skp, k to marker, sm, rep from \* around.

**Round 11:** \*K3 (4), yo, skp, k to marker, sm, rep from \* around.

**Round 13:** \*K2 (3), yo, skp, k to marker, sm, rep from \* around.

**Round 15:** \*K1 (2), yo, skp, k to marker, sm, rep from \* around.

**Round 17:** \*K0 (1), yo, skp, k to marker, sm, rep from \* around

**For larger size only:**

**Round 19:** \*Yo, skp, k to marker, sm, rep from \* around.

**Both sizes continue:**

**Next round:** Knit.

**Next round:** \*K to 1 st before marker, sl next st to right needle, remove marker, sl st back to left needle, replace marker, yo, skp, rep from \* around. (The marker should sit between the yarn over and the decrease.)

**Next round:** Knit.

**Next round:** \*K to 2 sts before marker, yo, skp, sm, rep from \* around.

**Next round:** Knit.

## crown

Switch to dpns to shape crown.

**Round 1:** \*K to 3 sts before marker, yo, sk2p, sm, rep from \* around.

**Round 2:** Knit.

Rep these 2 rounds until 16 sts rem.

**Next round:** \*K2tog, rep from \* around.





## finishing

Cut yarn, leaving a 6" tail. Use a tapestry needle to thread yarn through rem sts. Pull to close. Bring yarn through all sts again and weave in the end to secure it.

Cut millinery wire to approximately 50". Form a circle with the wire, overlap the two ends by about 5", and hold in place with clothespins or a piece of tape.

Using crochet hook and yarn, single crochet in each st around the hat brim (single crochet twice in each eyelet), capturing the wire in the crochet casing. To do so, attach the yarn to the hat, then \*insert the crochet hook from RS into 1 st on the edge of the brim, bring the hook *under* the wire, wrap the yarn around the hook and pull through, bring the yarn over the wire, wrap the yarn around the hook and pull through both loops. Rep from \* until you have concealed all but 2" of wire. Adjust the size of the wire circle so the brim lies flat. Trim the ends of the wire, if necessary, and securely tape the overlapped ends to secure. Continue crocheting to finish encasing the wire. Cut yarn end and pull through last loop to secure.

Weave in ends.

With a tapestry needle, on the WS of work, thread elastic through a row of sts at the base of the crown. Adjust to fit comfortably on the head. Run elastic through another row of sts, double-check the fit, and fasten off the ends of the elastic.



BARDINI  
summer cloche



# BARDINI

## summer cloche

by Julia Trice

A fun hat is just right for a summer day. This cloche, knit in linen with a woven texture, fits the bill perfectly. If you've never tried a herringbone stitch pattern, then you'll be intrigued by the result, which is softly reminiscent of a straw hat. Wear Bardini with the brim rolled up, or adorn it with a flapper-style ribbon or pin.

### pattern notes

Work your flat swatch "in the round" as follows: CO 28 sts on a circular needle, work Round 1 of the Miniature Herringbone Pattern, ending with k1 tbl. Do not join, but move the sts to the opposite end of the needle and do not turn, as you would to make I-cord. Strand the yarn very loosely across the back of the work and work the second "round," ending with k1. Continue in this manner until you complete the swatch. Wet and block the swatch before measuring your gauge.

In the Miniature Herringbone Pattern, you will work each stitch twice: once with the stitch before it and once with the stitch after it. Because you work each stitch with the stitches on either side of it, you need to remove the marker while you work the stitch before it and then replace it after you move that stitch to the right-hand needle.

### miniature herringbone pattern

**Round 1 and all odd rounds:** \*K2tog tbl, dropping only the first of the 2 sts off the LH needle, rep from \* to end.

**Round 2 and all even rounds:** \*K2tog, dropping only the first of the 2 sts off the LH needle, rep from \* to end.

### decreasing

**Even-Round Dec:** K3tog tbl, dropping the first 2 sts off the LH needle, but leaving the third st on the LH needle so you can work it with the following st.

---

### SIZE

One size fits most adult women

### FINISHED MEASUREMENTS

Brim circumference: 28½"

Hat circumference: 21¾"

### MATERIALS

- Louet Euroflax Sport Weight (100% linen; 270 yd. per 100g skein); color: 5 Goldilocks; 1 skein
- US 7 (4.5mm) circular needle, 24" length (or size needed to match gauge)
- US 7 (4.5mm) circular needle, 16" length
- US 7 (4.5mm) double-pointed needles
- Tapestry needle
- 7 stitch markers, plus 1 contrasting marker

### GAUGE

28 sts × 25 rows = 4" in Miniature Herringbone Pattern, blocked

### SKILLS USED

knitting in the round, double-pointed needles, unusual stitch pattern, decreasing

---



**Odd-Round Dec:** K3tog, dropping the first 2 sts off the LH needle, but leaving the third st on the LH needle so you can work it with the following st.

## directions

**NOTE** Due to the stitch pattern and the yarn, the first few rounds will require patience. Do not work too tightly. Use a finger to keep the second stitch in a pair on the left-hand needle while transferring the new stitch to the right-hand needle. After the first few rounds, the going will get substantially easier!

### brim

With the 24" circular needle, use the cable cast-on to CO 200 sts loosely, placing markers every 25 sts. Place the contrasting marker to indicate the beg of round and join the work, being careful not to twist sts.

*The cloche is worked in Miniature Herringbone Pattern throughout.*

**Round 1:** Work in patt to last st of round, sl last st, remove marker, sl st back to the LH needle and work the st as the first st of the second round of the patt. Place marker (pm) on the RH needle after you complete the first st. You will work every round of the cloche this way, working the last st of each round as if it were the first st of the following round and then replacing the beg of round marker.

**Rounds 2 and 3:** Work in patt.

**Round 4 (Dec Round):** \*Work in patt to 3 sts before marker, dec (use Even-Round Dec—see above), sl next st and marker to RH needle, remove marker, sl st back to LH needle, work next st of round, replace marker, rep from \* to end of round. 192 sts.

**Rounds 5–7:** Work in patt.

Rep rounds 4–7 five more times, switching to 16" circular needle when necessary. 152 sts rem.



### body of hat

Continue working in Miniature Herringbone Pattern without shaping (decs) for 8 rounds, ending after an odd round. You may wish to remove the markers (except the beg of round marker) for this portion of the cloche. If so, place them every 19 sts once you reach the crown.

### crown

Continue in Miniature Herringbone Pattern, working the Dec Round every other row 8 times, changing to dpns when necessary. 88 sts.

Work 1 odd round even.

Dec on every round of the crown as follows:

**Next round:** \*Work 8 sts in patt, dec (even round), work 1 st in patt; rep from \* to end of round. 80 sts.

**Next round:** \*Work 7 sts in patt, dec (odd round), work 1 st in patt; rep from \* to end of round. 72 sts.

**Next round:** \*Work 6 sts in patt, dec (even round), work 1 st in patt; rep from \* to end of round. 64 sts.

**Next round:** \*Work 5 sts in patt, dec (odd round), work 1 st in patt; rep from \* to end of round. 56 sts.

**Next round:** \*Work 4 sts in patt, dec (even round), work 1 st in patt; rep from \* to end of round. 48 sts.

**Next round:** \*Work 3 sts in patt, dec (odd round), work 1 st in patt; rep from \* to end of round. 40 sts.

**Next round:** \*Work 2 sts in patt, dec (even round), work 1 st in patt; rep from \* to end of round. 32 sts.

**Next round:** \*Work 1 sts in patt, dec (odd round), work 1 st in patt; rep from \* to end of round. 24 sts.

**Next round:** \*Dec (even round), work 1 st in patt; rep from \* to end of round. 16 sts.

## finishing

Cut the yarn leaving a 6" tail, and thread it through the rem 16 sts using a tapestry needle. Pull yarn gently to close the top of hat and secure the end on the WS of the hat.

Weave in ends.

ANACAPA

summery aran wrap





# ANACAPA

## summery aran wrap

by Kendra Nitta

The Anacapa wrap reinvents the traditional fisherman's sweater for warm climates by substituting lace for textured stitch patterns and cool hemp and cotton for Irish wool. The wrap is generously sized, and can even double as a lap blanket for two.

## pattern notes

All the charts in this pattern are available for download at [www.wiley.com/go/knittinginthesun](http://www.wiley.com/go/knittinginthesun).

## directions

### first half of wrap

Using scrap yarn and a provisional cast-on, CO 168 sts.

**Set-up Row 1 (RS):** K9, place marker (pm), k12, pm, k9, pm, \*k30, pm, k9, pm, rep from \* twice more, k12, pm, k9.

**Set-up Row 2 (WS):** K1, p7, k1, p12, k1, p7, k1, \*(p1, k1) 6 times, p6, (p1, k1) 6 times, k1, p7, k1, rep from \* twice more, p12, k1, p7, k1.

Begin working from the cable and lace charts as follows:

**Row 1 (RS):** Begin with Row 1 of each chart. Work 9 sts from Chart A; work 12 sts from Chart B; \*work 9 sts from Chart C; work 30 sts from Chart D, rep from \* twice more; work 9 sts from Chart C; work 12 sts from Chart E; work 9 sts from Chart F.

Continue as above working through Row 36 of all charts. Rep Rows 13–36 ten more times, then work the border.

### SIZE

One size fits all

### FINISHED MEASUREMENTS

Width: 27"

Length: 68"

### MATERIALS

- Lanaknits Hemp for Knitting Hempton (40% cotton, 30% hemp, 30% modal; 130 yd. per 50g ball); color: 69 Pebble; 16 balls
- US 5 (3.75mm) circular needle, 24" length (or size needed to match gauge)
- Cable needle
- Stitch markers
- Scrap yarn
- Tapestry needle

### GAUGE

22 sts × 30 rows = 4" in St st

### SKILLS USED

increasing, decreasing, cables, following multiple charts, provisional cast-on

## Key to Charts

 **knit**  
K on RS, P on WS




**C3F**  
Slip 2 sts to cable needle,  
hold to front, p1, k2 from  
cable needle

 **purl**  
P on RS, K on WS




**C3B**  
Slip 1 st to cable needle,  
hold to back, k2, p1 from  
cable needle

 **s2kp**  
Slip 2 sts together  
as if to k2tog. Knit 1  
st. Pass 2 slipped sts  
over the st just knit




**C6F**  
Slip 3 sts to cable needle,  
hold to front, k3, k3 from  
cable needle

 **yo**  
yarn over




**C6B**  
Slip 3 sts to cable needle,  
hold to back, k3, k3 from  
cable needle

 **k2tog**  
Knit 2 sts  
together as 1 st



**C8F**  
Slip 4 sts to cable needle,  
hold to front, k4, k4 from  
cable needle

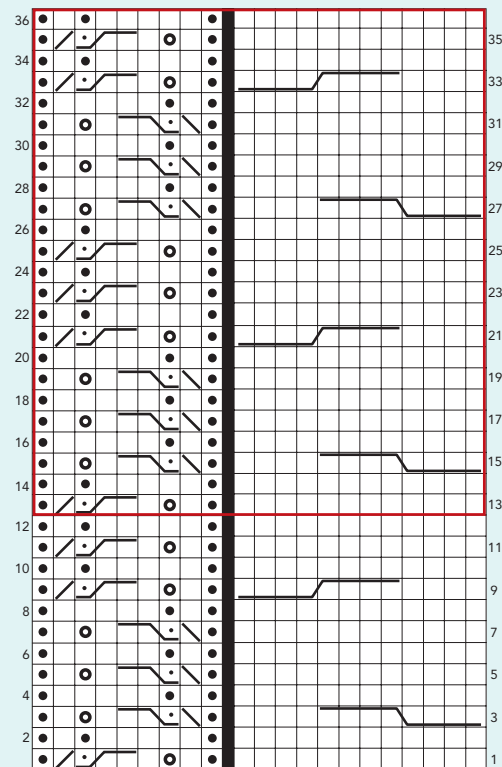
 **ssk**  
Slip 1 st as if to  
knit, slip another st  
as if to knit. Insert  
LH needle into front  
of these 2 sts and  
knit them together

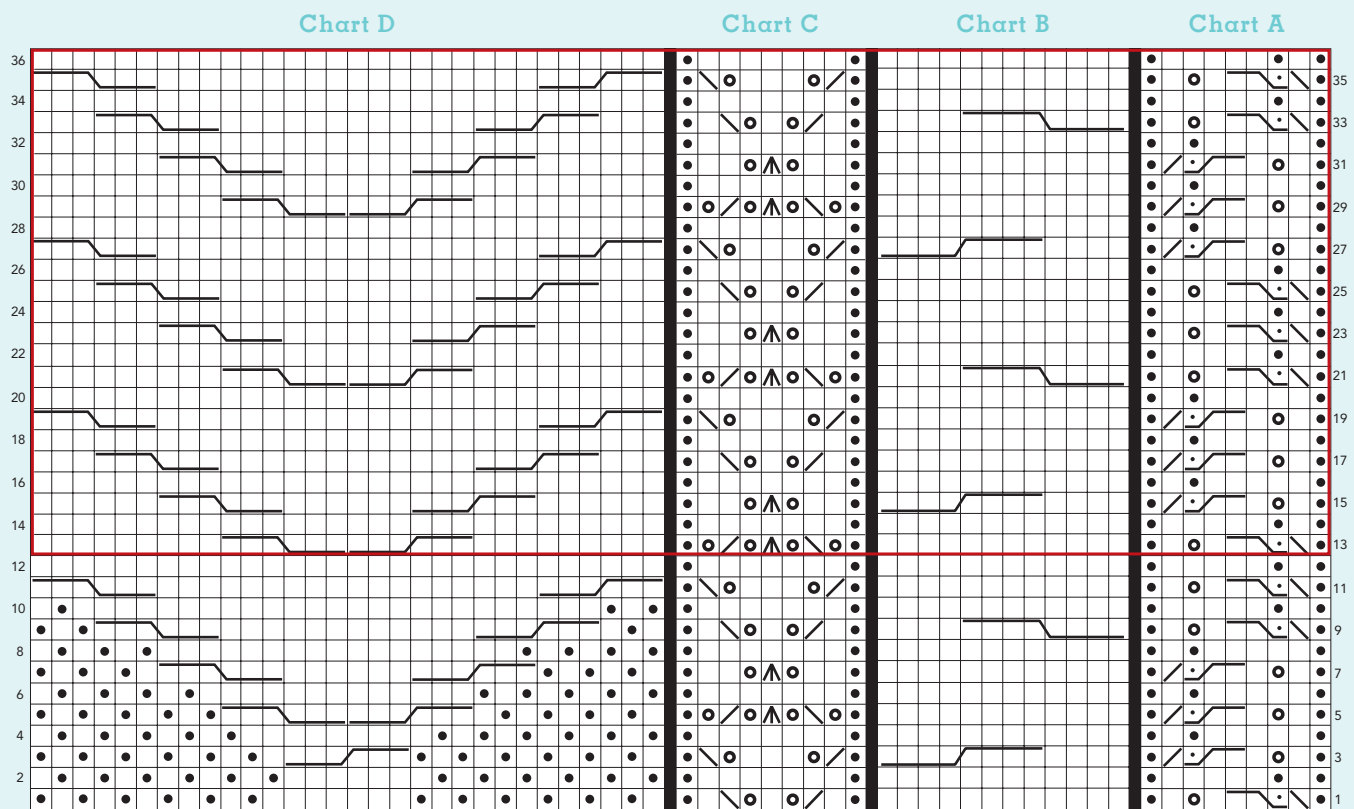


**C8B**  
Slip 4 sts to cable needle,  
hold to back, k4, k4 from  
cable needle

Chart F

Chart E









## border

**Row 1 (RS):** P1, k1, yo, k1, C3B, k2tog, p1; \*k1, p1; rep from \* to last 9 sts; p1, ssk, C3F, k1, yo, k1, p1.

**Row 2:** K1, p5, k1, p1, \*k1, p1; rep from \* to last 9 sts; k1, p1, k1, p5, k1.

**Row 3:** P1, k1, yo, k1, C3B, k2tog, p1; k4, \*s2kp, k7; rep from \* to last 15 sts; s2kp, k3, p1, ssk, C3F, k1, yo, k1, p1. 138 sts.

**Row 4:** K1, p5, k1, p1, k to last 8 sts; p1, k1, p5, k1.

**Rows 5 and 7:** P1, ssk, C3F, k1, yo, k1, p1; \*k1, m1, k2, s2kp, k2, m1, rep from \* to last 9 sts; p1, k1, yo, k1, C3B, k2tog, p1.

**Rows 6 and 8:** K1, p1, k1, p5, k to last 8 sts; p5, k1, p1, k1.

**To BO:** Work 2 sts in patt as follows, \*then bring the outside st on the RH needle over the inside

st on the RH needle, work another st in patt and rep from \* across: P1, ssk, C3F, k2, p1; k1, \*m1, k7, m1, k1; rep from \* to last 16 sts; m1, k7, m1, p1, k2, C3B, k2tog, p1. (There are no yarn overs in this row.)

## second half of wrap

Remove scrap yarn from cast-on edge and place the 168 live sts on a needle. With WS facing, work Set-up Row 2 above, placing markers at every panel.

Make the second half the same as the first, beginning with Row 1 under "First Half of Wrap."

## finishing

Weave in ends.

Block to measurements, gently shaping points on edges and borders.



A close-up photograph of a hand holding a maroon-colored lace shawl. The shawl features a delicate, repeating lace pattern with small, circular motifs. The fabric is held taut, revealing its texture and the way it catches the light. The background is a soft, out-of-focus green, suggesting an outdoor setting. The lighting is bright, creating a warm and inviting atmosphere.

BORDEAUX  
lace shawl

# BORDEAUX

## lace shawl

by Janine Le Cras

This beautiful rectangular shawl, knit in a laceweight merino and silk blend, is perfect for keeping off the chill of an evening breeze or overzealous air conditioning. Named for a beach near the designer's home on the island of Guernsey, this Bordeaux wrap is perfect to carry along for any time you might need to ward off a chill in the air.

### pattern notes

Work the lace charts reading odd-numbered rows from left to right and even-numbered rows from right to left.

You will work the stole in two halves and then graft it in the center.

The charts used in this pattern are available for you to download and print at [www.wiley.com/go/knittinginthesun](http://www.wiley.com/go/knittinginthesun).

### directions

CO 109 sts loosely.

Knit 3 rows to form garter st edging.

Begin Madeira Lace Chart A with Row 1, rep the 20 sts between the red lines 4 times in all before completing the row.

Work through Rows 1–34 twice (68 rows).

Work rows 69–86 from Chart B once.

### SIZE

One size fits all

### FINISHED MEASUREMENTS

Width: 22"

Length: 80"

### MATERIALS

- Lorna's Laces *Helen's Lace* (50% silk, 50% wool; 1250 yd. per 100g skein); color: Manzanita; 1 skein
- US 4 (3.5mm) circular or straight needles (or size needed to match gauge)
- Stitch holders or scrap yarn
- Tapestry needle

### GAUGE

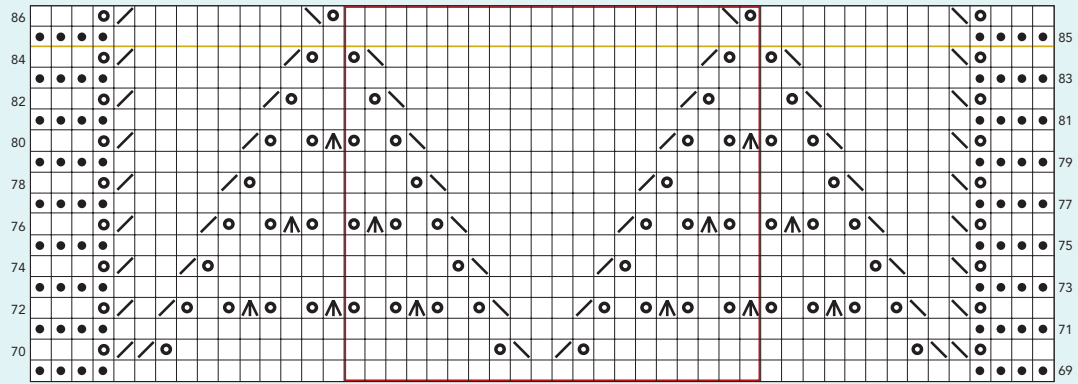
24 sts × 32 rows = 4" in St st, blocked

### SKILLS USED

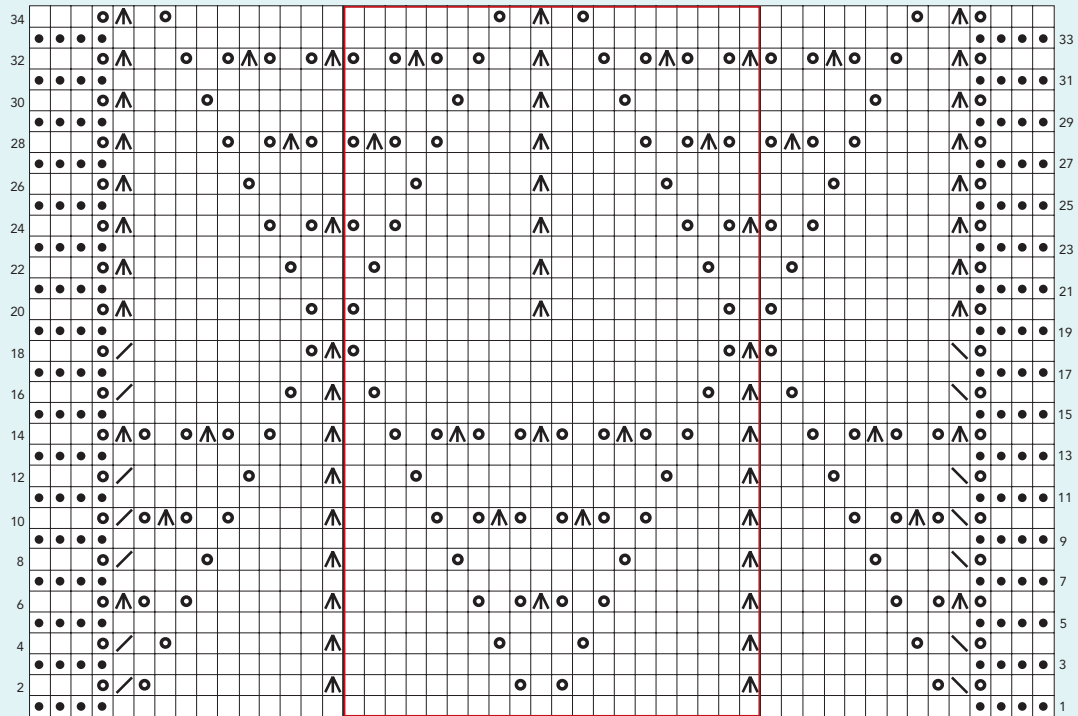
increasing, decreasing, chart reading, grafting (Kitchener stitch)



### Madeira Lace Chart B



### Madeira Lace Chart A



#### Key to Charts

	<b>knit</b> K on RS, P on WS		<b>yo</b> yarn over		<b>ssk</b> Slip 1 st as if to knit, slip another st as if to knit. Insert LH needle into front of these 2 sts and knit them together
	<b>purl</b> P on RS, K on WS		<b>k2tog</b> Knit 2 sts together as 1 st		<b>s2kp</b> Slip 2 sts together as if to k2tog. Knit 1 st. Pass 2 slipped sts over the st just knit



Rep Rows 85 and 86 only until work measures 35" unstretched, ending with Row 86.

Place all sts onto a holder or scrap yarn.

Work a second piece in the same way, ending with Row 85.

## finishing

Graft the two halves of the stole together in patt, following Row 86.

Wet block the stole to the given dimensions and leave to dry. Once dry, unpin and weave in any rem ends.



SILVER STRAND  
ocean waves wrap





# SILVER STRAND

## ocean waves wrap

by Dawn Leeseaman

Whether you wear this light wrap to keep away a cool summer breeze or to add a touch of glamour to your outfit, the compliments are sure to follow. The beautiful openwork wave pattern is so surprisingly easy that you will want to make more than one.

## pattern notes

### elongated old shale pattern

(worked over multiple of 11 sts + 1)

**Row 1 (RS):** Knit.

**Row 2 (WS):** Purl.

**Row 3:** K1, \*yo, k1, yo, k1, s2kp, k3tog, k1, yo, k1, yo, k1, rep from \* to end.

**Row 4:** Knit.

**Row 5:** \*K1, yo2, rep from \* to last st, k1.

**Row 6:** Knit, letting extra wraps drop. (St count rem unchanged).

## directions

CO 243 sts.

Work Rows 1–6 of Elongated Old Shale Pattern 11 times. Work Rows 1–4 once more.

BO all sts loosely.

## finishing

Weave in all ends.

Block to open up the lace pattern, taking care to shape and define the scalloped edges.

---

### SIZE

One size fits all

### FINISHED MEASUREMENTS

Width: 18"

Length: 65"

### MATERIALS

- Trendsetter Yarns Serene (35% silk, 35% cotton, 12% viscose, 10% linen, 6% lurex, 2% nylon; 115 yd. per 50g skein); color: 39 Blue Calvins; 5 skeins
- US 9 (5.5mm) circular needle, 40" length or longer (or size needed to match gauge)
- Tapestry needle

### GAUGE

15 sts x 15 rows = 4" in Elongated Old Shale Pattern, blocked

### SKILLS USED

increasing, decreasing, double yarn overs

---





LAGUNA

vining leaves scarf





# LAGUNA

## vining leaves scarf

by Eileen Adler

Even on the warmest days, this is a handknit accessory you can wear! The vining leaves are as cool as a shady tree and can be worn in a variety of ways. A single silky vine can act as a stunning necklace, while multiple vines in a variety of yarns create an interesting, fun scarf. It also works great as a belt.

This quick knit uses a modest amount of yarn: a perfect use for that small, special skein you've been saving.

## pattern notes

This pattern is appropriate for nearly any yarn. Don't be afraid to experiment! Finer yarns will yield a more delicate vine of leaves; super-bulky yarns will give you bigger, dramatic leaves.

## directions

CO 5 sts using knitted cast-on.

**Row 1 (RS):** K2, yo, k1, yo, k2. 7 sts.

**Row 2 and all even rows:** Purl.

**Row 3:** K3, yo, k1, yo, k3. 9 sts.

**Row 5:** K4, yo, k1, yo, k4. 11 sts.

**Row 7:** K5, yo, k1, yo, k5. 13 sts.

**Row 9:** K5, s2kp, k5. 11 sts.

**Row 11:** K4, s2kp, k4. 9 sts.

**Row 13:** K3, s2kp, k3. 7 sts.

**Row 15:** K2, s2kp, k2. 5 sts.

**Row 17:** K1, s2kp, k1. 3 sts.

**Row 19:** S2kp. 1 st.

### SIZE

One size fits all

### FINISHED MEASUREMENTS

Width: 1½–2½", depending on yarn chosen

Length: 50"

### MATERIALS

- [A] Curious Creek Fibers *Kalahari* (100% nylon; 87 yd. per 50g skein); color: Birches in Norway; 1 skein
- [B] Curious Creek Fibers *Isalo* (100% silk; 262 yd. per 95g skein); color: Birches in Norway; 1 skein
- [C] Curious Creek Fibers *Etosha* (90% kid mohair, 10% nylon; 110 yd. per 25g skein); color: Emerald City; 1 skein
- Needle size appropriate for the yarn chosen
- Tapestry needle

continued ►

► continued

### GAUGE

Gauge will vary and need not be precise; knit to the yarn manufacturer's suggested gauge

### SKILLS USED

knitted cast-on, increasing, decreasing, I-cord

---

**Row 20:** Return st to LH needle and CO 4 more sts using knitted cast-on. 5 sts.

Rep Rows 1–20 until scarf measures 50", or desired length. On last leaf, end with Row 18.

**Next row:** K1, k2 tog. 2 sts rem.

With the 2 rem sts, work I-cord for 2".

## finishing

Cut yarn leaving a 12" tail. Use a tapestry needle to bring yarn through the 2 rem sts. Pull tight to secure. Bring bound-off edge to beginning of I-cord to create a loop and sew in place. Weave in end. Block if necessary.

To wear, thread a leaf (or many leaves!) through the I-cord loop.







MONACO  
driving scarf



# MONACO

## driving scarf

by Katherine Vaughan

Come summer, I envy Grace Kelly driving down the coast of Monaco with her hair held safe in a light scarf. When she reaches her destination, she either leaves the scarf on her hair or lets it pool around her shoulders. . . .

This lightweight, mesh scarf can hold back your hair or hold off an a/c-induced chill. The bamboo yarn is featherweight and noninsulating, making it a great choice for a summer scarf. With a simple lace stitch pattern, sideways construction, and pointed ends, this quick but interesting pattern will become a mainstay of any summer wardrobe—whether or not you're a movie star!

## pattern notes

On even rows, work 2 sts (k1, p1) in double yo; work 1 st (k1) in single yo.

## directions

CO 240 sts loosely.

**Border Row 1:** Knit.

**Border Row 2:** K1, kfb, knit to last 3 sts, k2tog, k1.

**Border Row 3:** Knit.

**Border Row 4:** K1, kfb, knit to last 3 sts, k2tog, k1.

**Row 1:** K2, \*k2tog, yo2, ssk, rep from \* to last 2 sts, k2.

**Row 2:** K1; kfb; knit, working [k1, p1] into each double yo, to last 3 sts; k2tog; k1.

---

### SIZE

One size fits all

### FINISHED MEASUREMENTS

Width: 6"

Length: 60"

### MATERIALS

- SWTC *Bamboo* (100% bamboo; 250 yd. per 100g skein); color: 151 Lilac; 2 skeins
- US 8 (5mm) circular needle, 36" length or longer (or size needed to match gauge)
- Tapestry needle

### GAUGE

20 sts × 32 rows = 4" in St st

*Note: This is a loose gauge for this yarn.*

### SKILLS USED

increasing, decreasing, double yarn overs

---

**Row 3:** K3, k2tog, yo2, \*ssk, k2tog, yo2, rep from \* to last 7 sts, ssk, k2tog, yo, k3.

**Row 4:** Rep Row 2, making 2 sts in each double yo and 1 st in the single yo.

**Row 5:** K2, yo, \*ssk, k2tog, yo2, rep from \* to last 6 sts, ssk, k2tog, yo, k2.

**Row 6:** Rep Row 4.

**Row 7:** K3, yo, ssk, \*k2tog, yo2, ssk, rep from \* to last 3 sts, k3.

**Row 8:** Rep Row 4.

Rep Rows 1–8 until scarf is 5½" wide, or a half inch less than desired width.

Work Border Rows 2–4 once more.

BO all sts loosely.

## finishing

Weave in ends.

Block gently.





CINNAMON BAY  
beach bag blanket





# CINNAMON BAY

## beach bag blanket

by Carol Feller

There is nothing more frustrating than arriving at the beach and realizing that you have forgotten to bring a towel with you! Thanks to this multifunctional design, you will never be caught without a spot to sit again. Just open up your bag and spread it out to provide a comfortable beach blanket. When the sun sets, throw everything on the blanket, pull the cord tight, and off you go!

## pattern notes

### ridged feather stitch pattern

(worked in the round on a multiple of 11 sts)

**Round 1:** Knit.

**Round 2:** Knit.

**Round 3:** [P2tog] twice, [yo, k1] 3 times, yo, [p2tog] twice.

**Round 4:** Knit.

### picot bind-off

\*CO 1 st using cable cast-on, BO 3 sts, sl rem st on RH needle back to LH needle, rep from \*.

## directions

Using dpns, CO 5 sts, divide sts among 3 needles, place marker, and join to work in the round.

**Set-up round:** Kfb, \*pm, kfb; rep from \* 4 times. 10 sts.

### SIZE

S (L)

### FINISHED MEASUREMENTS

Blanket diameter: 36 (52)"

### MATERIALS

- Rowan *All Seasons Cotton* (60% cotton, 40% acrylic; 98 yd. per 50g skein); color: 228 Smoke; 11 (20) skeins
- US 8 (5mm) double-pointed needles (or size needed to match gauge)
- US 8 (5mm) circular needle, 24" length
- US 8 (5mm) circular needle, 40" length
- 4 stitch markers, plus 1 contrasting marker
- Tapestry needle

### GAUGE

18 sts × 24 rows = 4" in St st

### SKILLS USED

increasing, decreasing, single and double yarn overs, knitting in the round, cable cast-on, I-cord

**Round 1:** \*Slip marker, k to 1 st before marker, kfb, rep from \* to end of round. 5 sts added.

Rep Round 1 until 99 (143) sts are between each set of markers and you have 495 (715) sts total, switching to circular needle when there are too many sts to fit comfortably on the dpns.

## eyelets

Remove markers (except the beg of round marker) as you encounter them in this round.

**Next round:** \*Ssk, yo2, k2tog, rep from \* to last 3 sts, k3.

**Next round:** Knit, working 2 sts in each double yo. 495 (715) sts.

## edging

Work the 4 rounds of Ridged Feather Stitch Pattern 3 times (12 rounds total).

BO all sts using Picot Bind-Off.

## finishing

CO 4 sts using 2 dpns. Make an I-cord 120 (175)" long. BO. Thread the I-cord through the eyelets and sew the two ends of the I-cord together.

Weave in ends.





