

Chapter

1

Customizing Photoshop for Your Projects












Photoshop is an incredibly powerful program. Not only can you perform many different tasks with Photoshop, but you can also choose from a number of ways to complete each project.

By setting up Photoshop to work for you, you can develop your own techniques and find ways to adapt the standard tools so you can be more creative.

When you work on an image, you may prefer to see some panels and not others. You may also prefer certain tool settings to others. Customizing Photoshop to work your way makes you more productive, the program more useful, and everything you do with Photoshop much more fun.

With Photoshop CS4, Adobe has changed the look of the interface and taken customization to a new level. You can modify your settings and preferences by adjusting the workspace, the panels, and the tools to fit the requirements of specific projects. You can close some panels and open others to simplify your screen and keep only the tools you need available. You can make your own gradients, customize shortcuts, and design your own brushes. These may seem like boring steps, yet by learning to customize Photoshop you gain familiarity with the program and become more efficient as you try different projects.

Top 100

- | | | | |
|------------|---|----|---|
| #1 | Select the Color Settings for Your Projects | 4 |  |
| #2 | Set the Preferences for the Way You Work | 6 |  |
| #3 | Move the Panels and Tools to Customize Your Workspace | 8 |  |
| #4 | Personalize Your View of Bridge | 10 |  |
| #5 | Add a Keyboard Shortcut for a Favorite Filter | 12 |  |
| #6 | Create a Custom Action to Increase Your Efficiency | 14 |  |
| #7 | Design a Customized Brush with Your Settings | 16 |  |
| #8 | Make a Special Gradient to Suit Your Design | 18 |  |
| #9 | Calibrate and Profile Your Monitor for Better Editing . . . | 20 |  |
| #10 | Turn on the Full Power of Photoshop with a Pen Tablet | 22 |  |
| #11 | Change Your Window Views | 24 |  |

SELECT THE COLOR SETTINGS

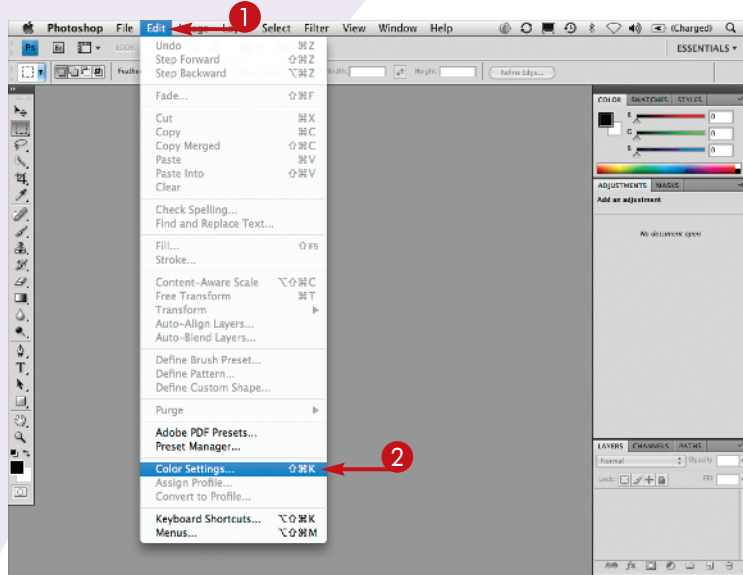
for your projects

Using Photoshop CS4 is an image-altering experience! You can improve photographs, repurpose them, or create original designs. Because printed images and Web images have different limits on the range of colors that they can represent, you need to set the working color space for your project.

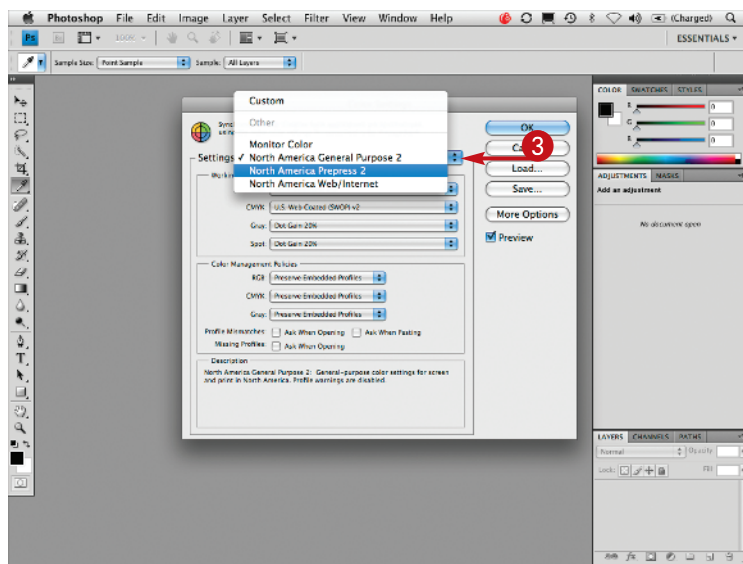
Photoshop's default color space is set to sRGB, a limited color space intended for Web images to be viewable on even the lowest-quality monitor. sRGB is

a much smaller color space than what better monitors can show and what printers can actually produce. Designers and photographers generally prefer the larger color space called Adobe RGB (1998) for working with projects intended for print.

In Photoshop CS4, you can easily choose your working color space and save it. Set your color space to the North America Prepress 2 settings and Adobe RGB (1998) to make your printed colors look much better.

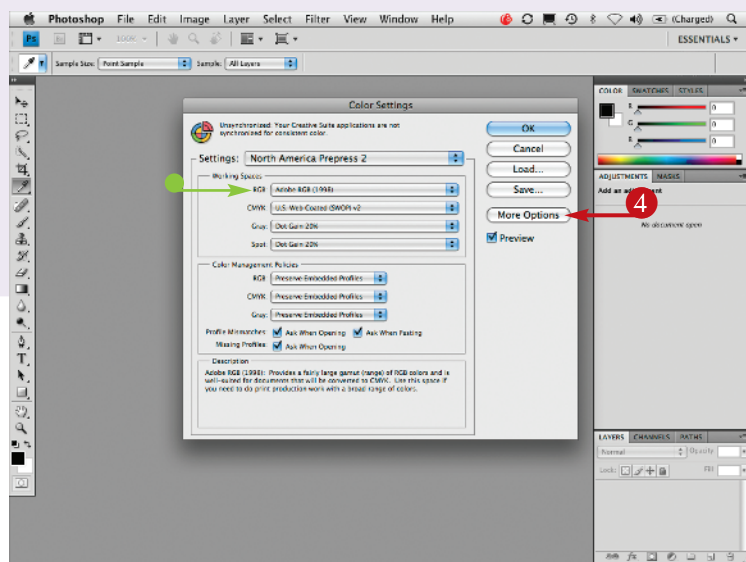


- 1 Click Edit.
- 2 Click Color Settings.



The Color Settings dialog box appears.

- 3 Click here and select North America Prepress 2.



- The RGB setting changes to Adobe RGB (1998).

Note: ProPhoto RGB is an even larger color space often preferred by professional photographers because it includes a wider range of tones and allows for fine detail editing.

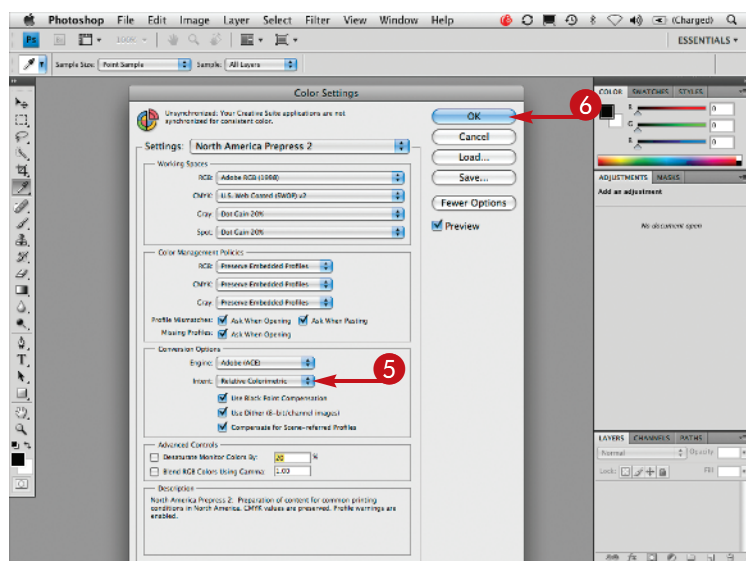
The rest of the Color Settings dialog box changes to reflect the preferred working space for images that you print.

- 4 Click More Options.

The dialog box expands.

- 5 Click here and select Relative Colorimetric for a graphic design project or Perceptual for most photographic projects.
- 6 Click OK.

Your color settings are saved until you reset your preferences.



TIPS

Customize It!

You can save your own Color Settings preset. The name of the preset changes to Custom when you deselect any check box or make any other changes. Click Save after customizing your settings. Type a name in the Save dialog box and click Save. Your customized preset appears in the Settings pop-up menu, ready for you to choose.

Try This!

You can synchronize the color settings in other Creative Suite CS4 applications to match your saved custom Photoshop CS4 color settings. In Photoshop, click File and select Browse in Bridge. In Bridge, click Edit and select Creative Suite Color Settings. Click North America Prepress 2 and click Apply.

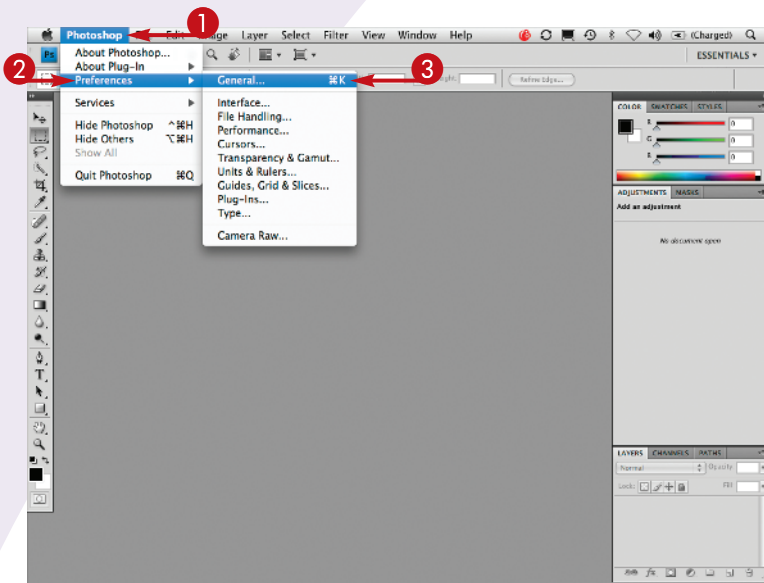
SET THE PREFERENCES

for the way you work

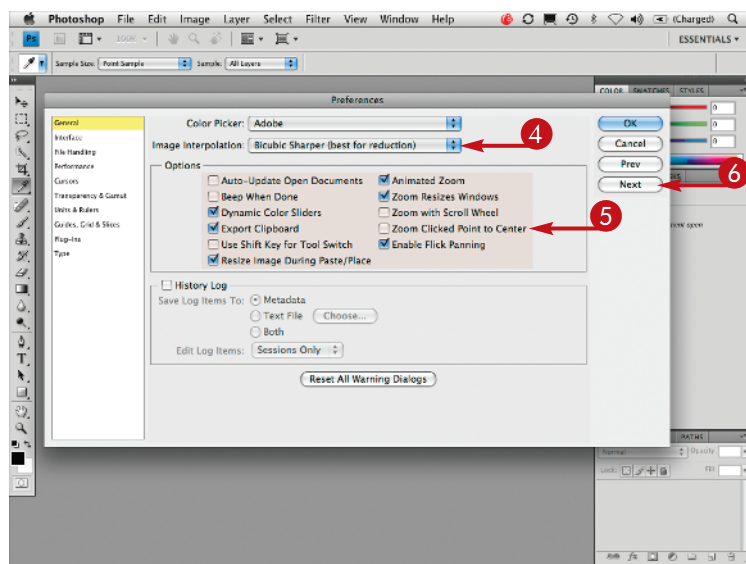
The Preferences menu option includes ten options for Photoshop and one for Camera Raw. All the Photoshop-specific preferences are accessed through different panes in the main Preferences dialog box. Although you can work with the default settings, changing some of these can make your computer run more efficiently or make working with your projects easier. For example, by default, Photoshop is set to use more than half of the available RAM. You can lower this setting to fit the amount of RAM installed in the computer and the number of applications you

run at the same time. You can change the default colors for the guides and grid when they are similar to those in your image. Designating an additional plug-ins folder keeps third-party items separate from those included with Photoshop. You can set a separate scratch disk to speed up your work on large files and set Photoshop to automatically launch Bridge.

Read through each Preferences pane and select the settings to make Photoshop work for you.



- 1 Click Photoshop (Edit).
- 2 Click Preferences.
- 3 Click General.

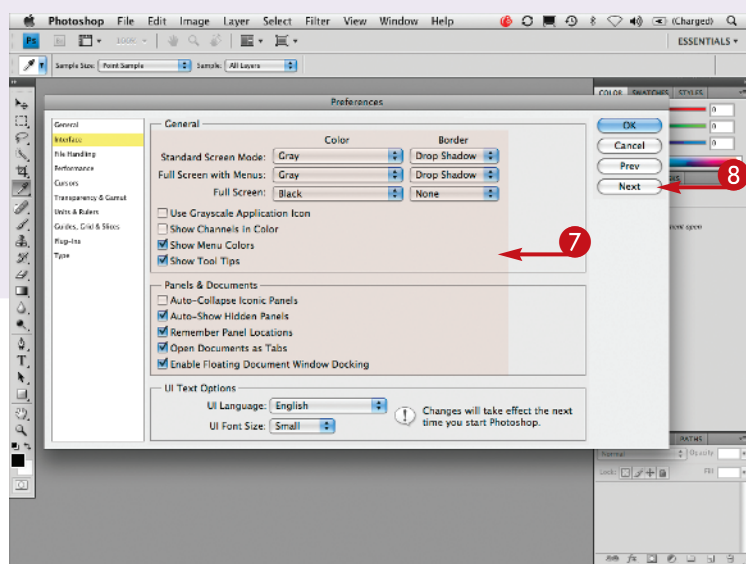


The General Preferences dialog box appears.

- 4 Click any arrows to change your settings.
- 5 Click to select the options you want or to deselect those you do not want.
- 6 Click Next to continue customizing Preferences.

#2

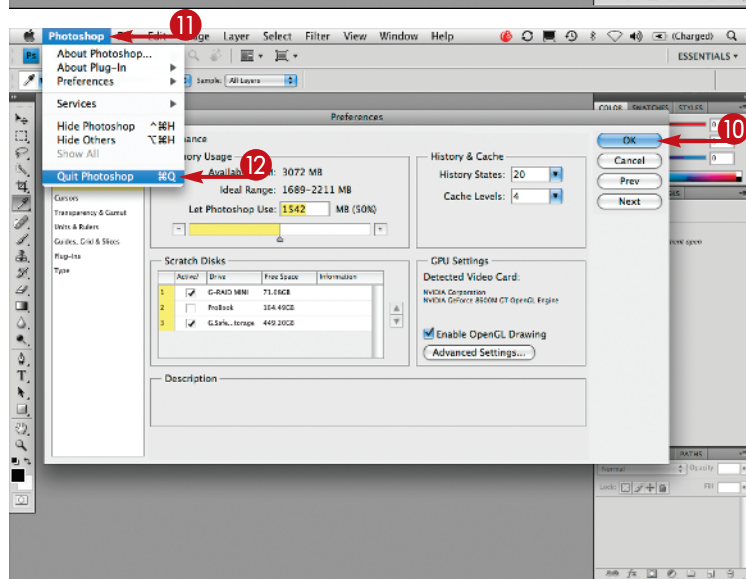
DIFFICULTY LEVEL



The dialog box changes to the Interface Preferences.

- 7 Click to select the interface options you want or deselect those you do not want.

- 8 Click Next.



- 9 Make any other changes that you prefer in the other Preferences panes.
- 10 Click OK when you have cycled through all the Preferences panes.
- 11 Click Photoshop (File).
- 12 Click Quit Photoshop (Exit).

The next time you start the application, your own settings take effect.

TIPS

Did You Know?

You can use keyboard shortcuts to set the Preferences. Press $\text{⌘}+\text{K}$ (Ctrl+K). Set your options for the General Preferences. Press $\text{⌘}+2$ (Ctrl+2), and so on, for each of the Preferences panes.

Try This!

You can change the default Preferences so that just pressing the appropriate letter toggles each tool. In the General Preferences pane, deselect the Use Shift Key for Tool Switch check box.

Did You Know?

You can restore the Preferences any time by holding the $\text{⌘}+\text{Option}+\text{Shift}$ (Ctrl+Alt+Shift) keys as you launch the application. Click Yes in the dialog box that appears, and the Preferences are reset to the defaults.

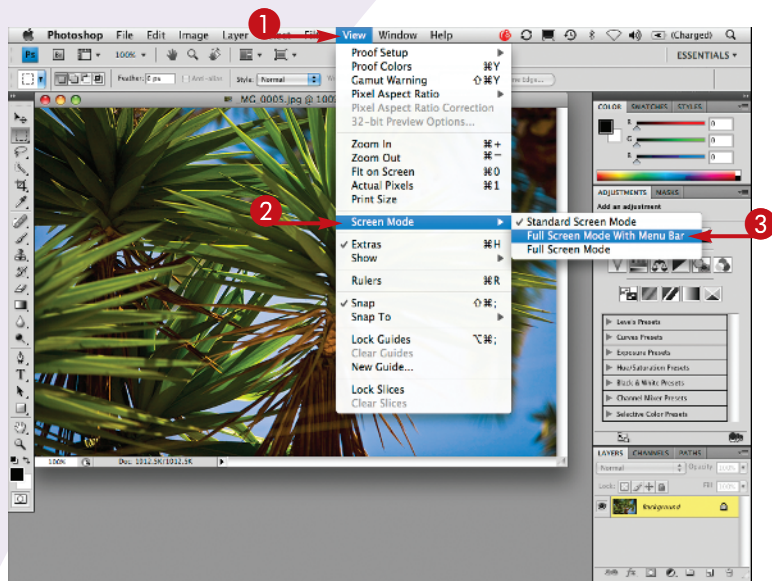
Move the panels and tools to CUSTOMIZE YOUR WORKSPACE

The workspace in Photoshop refers to the layout of the different panels and tools on your screen. Photoshop CS4 enables you to design your workspace to fit your needs. You can then save your custom workspace to reuse it with other images.

You can open the panels that you use most and collapse others into buttons. You can move and resize individual panels and docks. You can move the single-column toolbox, dock it, or change it to a two-column toolbox. When you select Full Screen Mode

With Menu Bar from the View menu, your image appears as large as possible with all the tool panels available. You can save the layout with your preferred tools and panel locations.

Photoshop CS4 also includes some preconfigured workspaces, which you can use or modify to accommodate different tasks, such as one for color-correcting photographs and one for working with type.

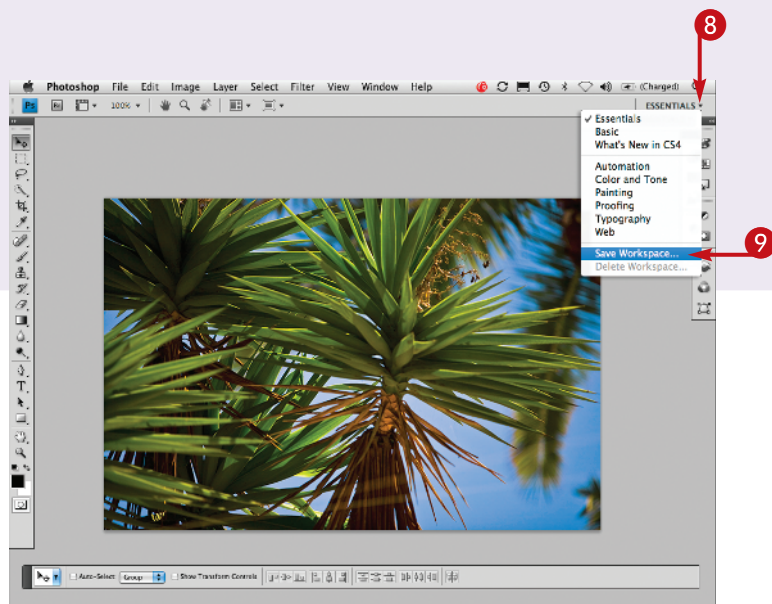


- 1 With an image open, click View.
- 2 Click Screen Mode.
- 3 Click Full Screen Mode With Menu Bar.



The image on-screen maximizes to fill the space.

- 4 Click here to reduce the panel groups to buttons with names.
- 5 Click here and drag to the right to shrink the docks to buttons only.
- 6 Click here to change the width of the toolbox.
- 7 Click here and drag to move the Options bar.

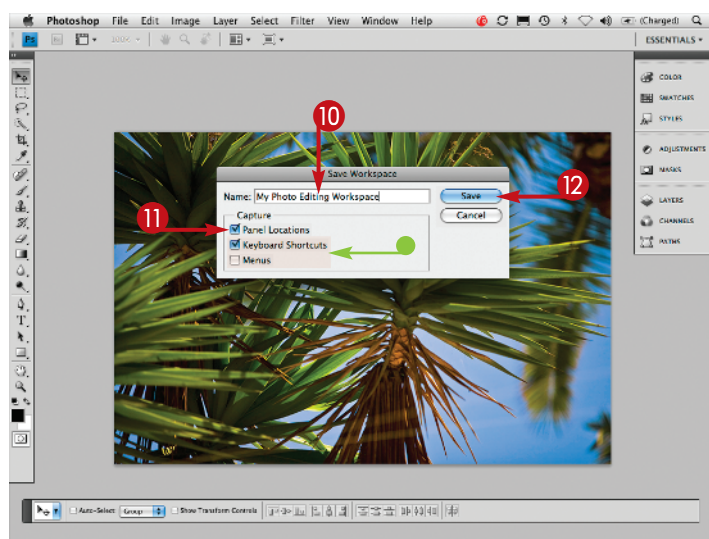


Note: You can make any changes you prefer for your custom workspace.

- 8 Click here to open the Workspace menu.

Note: Optionally, click *Window* and click *Workspace*.

- 9 Click Save Workspace.



The Save Workspace dialog box appears.

- 10 Type a name for your workspace.
- 11 Make sure that the Panel Locations check box is selected.
- You can also save custom keyboard shortcuts and menus by selecting these check boxes.
- 12 Click Save.

Your custom workspace is saved.

TIPS

Did You Know?

You can return to the original default workspace any time by clicking *Window*, *Workspace*, and *Essentials* (Default) or by clicking *Essentials* in the *Workspace* pop-up menu on the top toolbar. You can also delete unused custom workspaces by clicking *Window*, *Workspace*, and *Delete Workspace* and selecting the one that you want to delete.

More Options!

You can also change workspaces by clicking the name of the current workspace on the menu bar and then clicking another workspace from the pop-up menu.

Try This!

Photoshop CS4 includes a number of predesigned workspaces for particular projects, such as *Color* and *Tone* or *Painting*. You can select a Photoshop CS4 predesigned workspace by clicking *Window*, selecting *Workspace*, and then clicking a specific workspace from the menu.

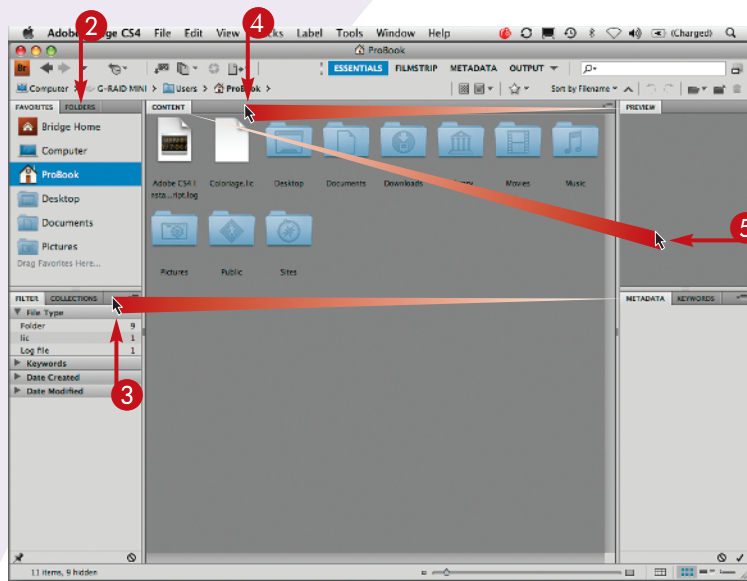
PERSONALIZE YOUR VIEW of Bridge

Bridge, which ships with Photoshop CS4, acts as a power browser and central hub for all the Creative Suite 4 applications and shows all types of files and folders that are available. You can even see thumbnails of documents and files from other applications, such as Word or Acrobat files. When you double-click a thumbnail from Bridge, the other application launches. You can open Bridge from within Photoshop or as a separate application.

Bridge offers different ways to search, categorize,

and view your files, options for adding information, and automation for various repetitive tasks. By customizing and saving your own Bridge workspace, you can review and compare images more efficiently and have more fun doing so.

To launch Bridge from within Photoshop, click File and Browse in Bridge. You can also click the Bridge button in the Options bar, or press the keyboard shortcut **⌘+Option+O** (Ctrl+Alt+O).



1 Launch Bridge.

Note: You can make any changes you prefer for your custom workspace.

2 Click the Folders tab to navigate to a folder of images.

3 Click and drag the Metadata and Keywords tabs to the left panel between the Folders and the Filter tab.

4 Click and drag the Preview tab to the center pane.

5 Click and drag the Content tab to the right pane.

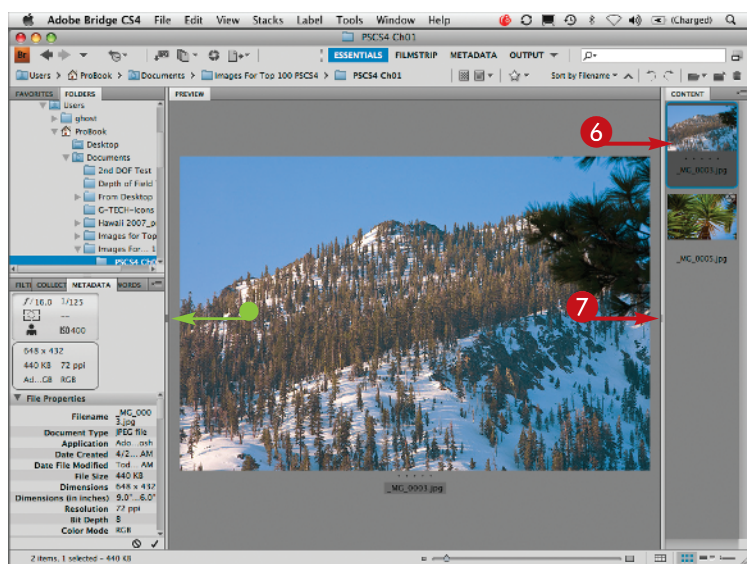
The Content images align vertically on the right.

6 Click an image to see it in the Preview tab.

7 Click here and drag to the right.

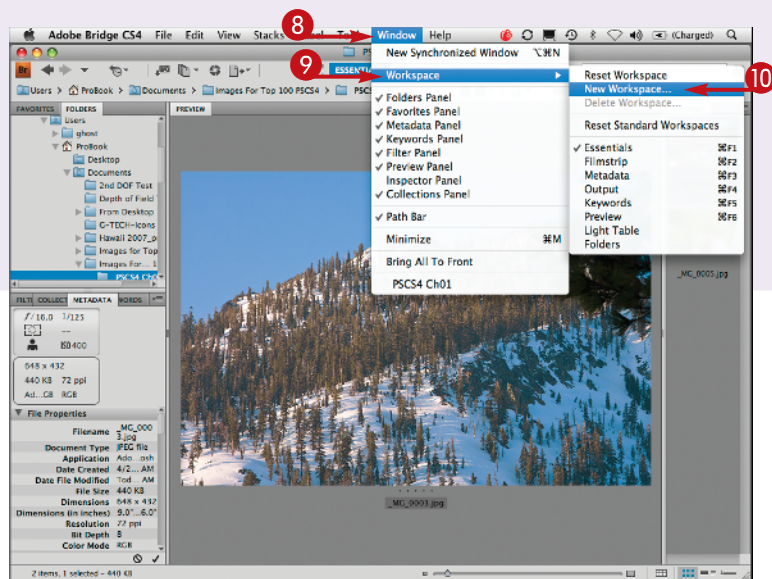
The Preview tab enlarges and the Content tab narrows.

- You can also click the left separator bar and drag to the left to enlarge the Preview tab more.

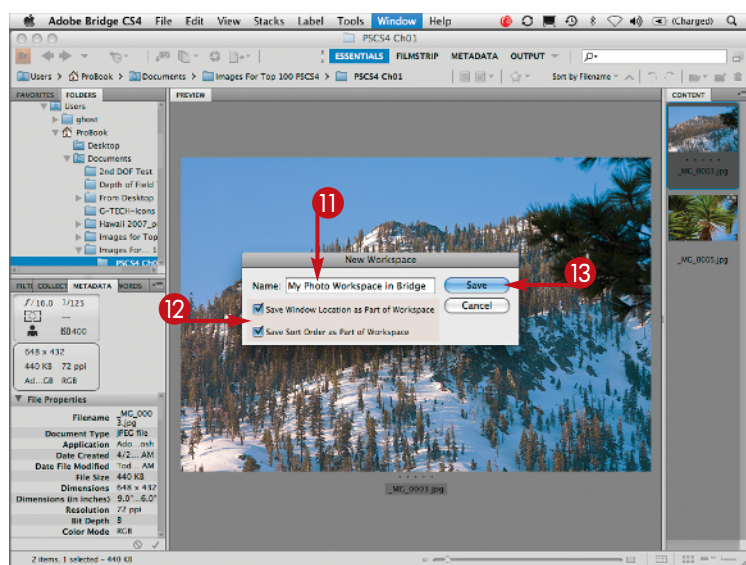


#4

DIFFICULTY LEVEL



- 8 Click Window.
- 9 Click Workspace.
- 10 Click New Workspace.



- The New Workspace dialog box appears.
- 11 Type a name for the workspace.
 - 12 Make sure that both check boxes are checked.
 - 13 Click Save.
- Your custom workspace is saved and listed in the top panel.

TIPS

More Options!

You can sort files using the Filter panel. For example, you can view only the portrait-orientation images or all the images created on a specific date. You can also compare images in the Preview panel by pressing Shift and clicking multiple images in the Content panel.

Enlarge It!

Press Tab and the Preview window fills the screen as the other panels slide away on the sides. Press Tab again to return to your custom Bridge workspace.

Try This!

Press ⌘ (Ctrl) and click multiple images in the Content panel to compare them in the Preview panel. You can also stack the selected images by clicking Stacks and then Group or by pressing ⌘+G (Ctrl+G).

ADD A KEYBOARD SHORTCUT

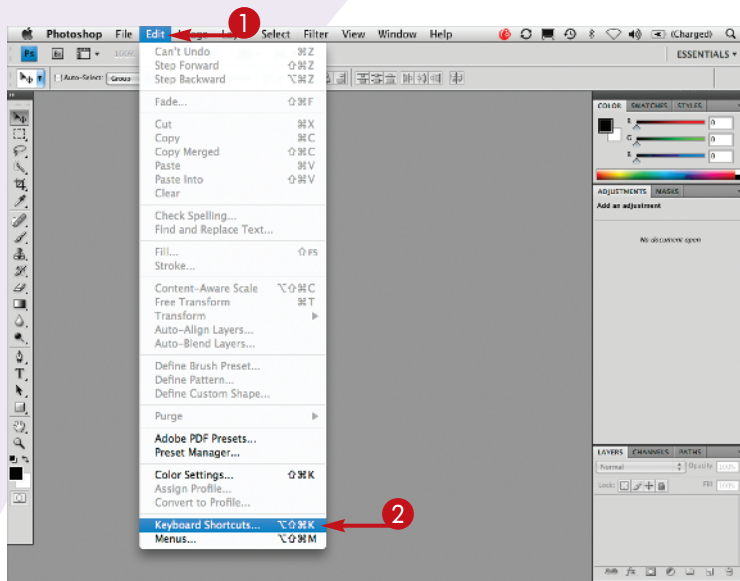
for a favorite filter

Photoshop includes keyboard shortcuts for the tools that you use most often. Many of the tools already have keyboard shortcuts assigned. Still, you may find yourself going to the menu to select an item, such as the Gaussian Blur filter, so often that a personalized keyboard shortcut becomes a huge timesaver.

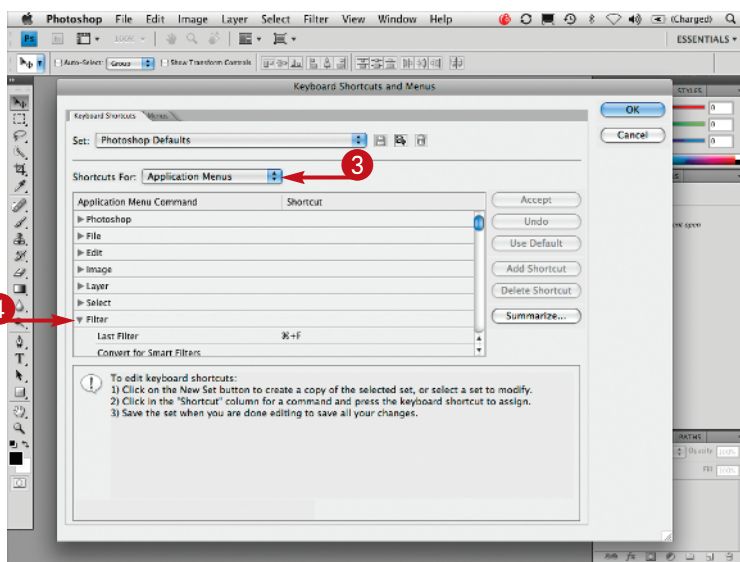
You can create your own custom keyboard shortcuts or even change some Photoshop keystrokes to something that you can remember better. If the keyboard shortcut that you choose is already

assigned by Photoshop for another function, a warning appears. Although you should generally avoid keyboard shortcuts that are used by your operating system, you can change Photoshop's default shortcuts, or you can apply a different set of keystrokes that are not already assigned.

Learning and using custom keyboard shortcuts can streamline your workflow, leaving you more time for designing and photo-editing.



- 1 Click Edit.
- 2 Click Keyboard Shortcuts.

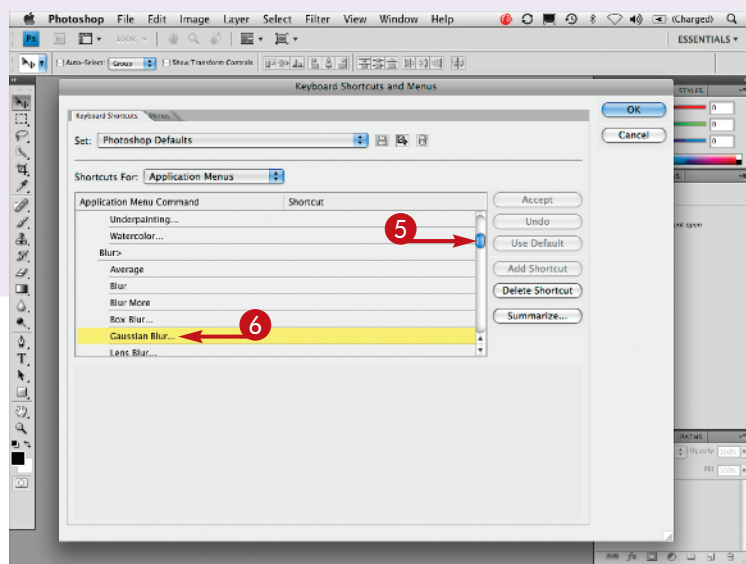


The Keyboard Shortcuts and Menus dialog box appears with the Keyboard Shortcuts tab preselected.

- 3 Click here and select Application Menus.
- 4 Click the Filter disclosure triangle.

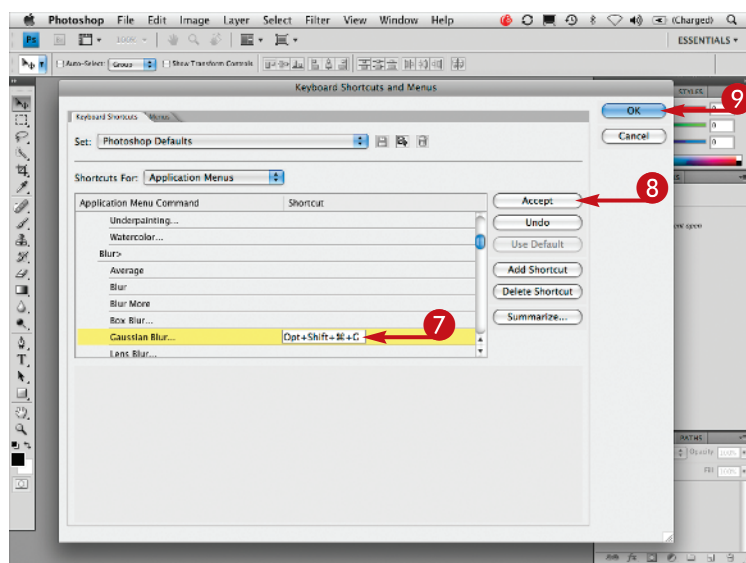
#5

DIFFICULTY LEVEL



The filters are listed along with any existing keyboard shortcuts.

- 5 Scroll down to the filter for which you want to add a shortcut.
- 6 Click the filter.



The filter is highlighted, and an empty data field appears under the Shortcut column.

- 7 Press ⌘ (Ctrl) and type your shortcut in the data field.

Note: A shortcut must contain either ⌘ (Ctrl) or an F key (function key) in the name.

- 8 Click Accept.

The Photoshop Defaults set is modified to include your shortcut.

- 9 Click OK to finish adding your custom keyboard shortcut.

TIPS

Did You Know?

You can access the Keyboard Shortcuts and Menus dialog box by using the keyboard shortcut ⌘+Shift+Option+K (Ctrl+Shift+Alt+K).

Try This!

You can save and print a list of all keyboard shortcuts. Click Summarize in the Keyboard Shortcuts and Menus dialog box and save the file as Photoshop Defaults.htm. Open the file and print the list for reference.

CREATE A CUSTOM ACTION

to increase your efficiency

Actions help you perform repeated steps quickly. An *action* is a series of commands that you can apply to an image with one click of the mouse. Unlike a keyboard shortcut, which can only invoke a command, an action can open a command, apply changes to an image, step through another command, apply it, and even save a file in a particular way. You can create your own actions for steps that you do over and over and add them to the Actions panel.

Using the Actions panel, you record a sequence of steps and save your new action. When you need to apply the same steps to a different image, even to an entire folder of files, you play the action, and Photoshop automatically applies the steps.

Actions can help you automate your work for repetitive tasks, leaving you more time to work on creative projects.

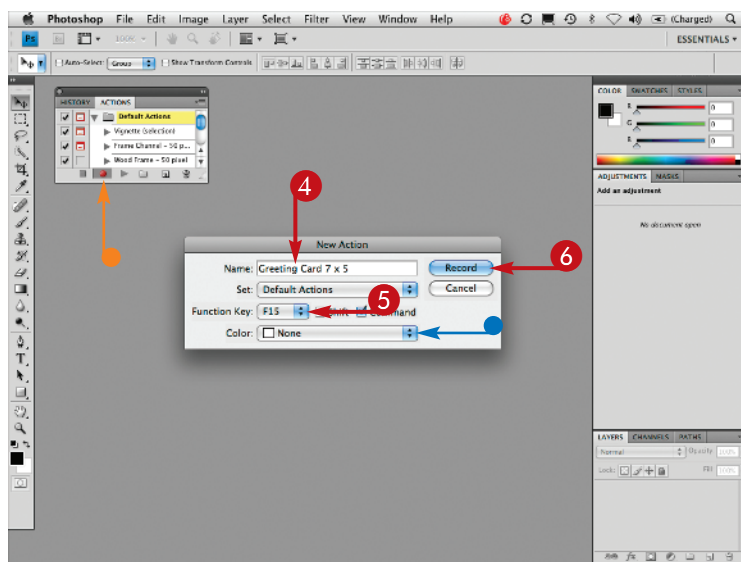
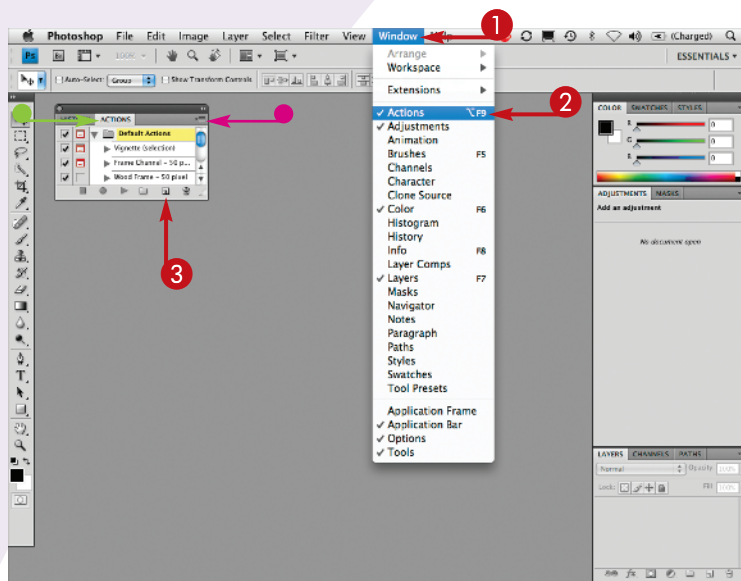
Note: As an example, the following steps show creating an action of opening a new 7- x-5- inch document at 300 pixels/inch for a greeting card.

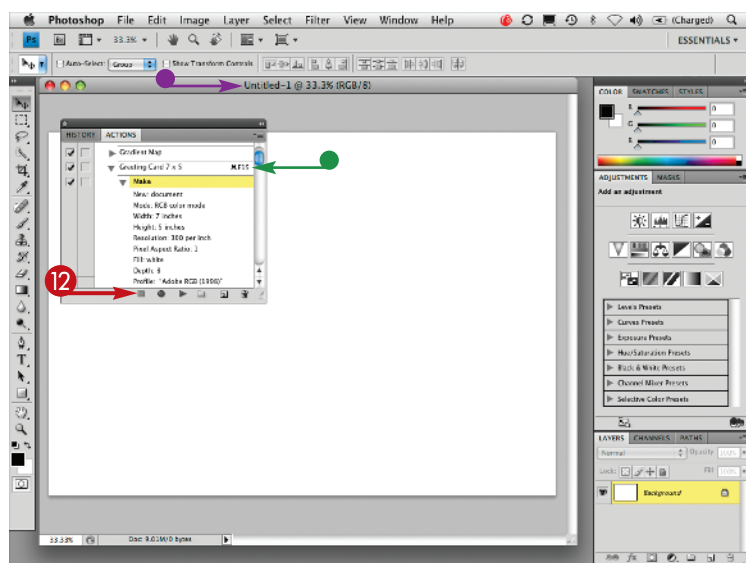
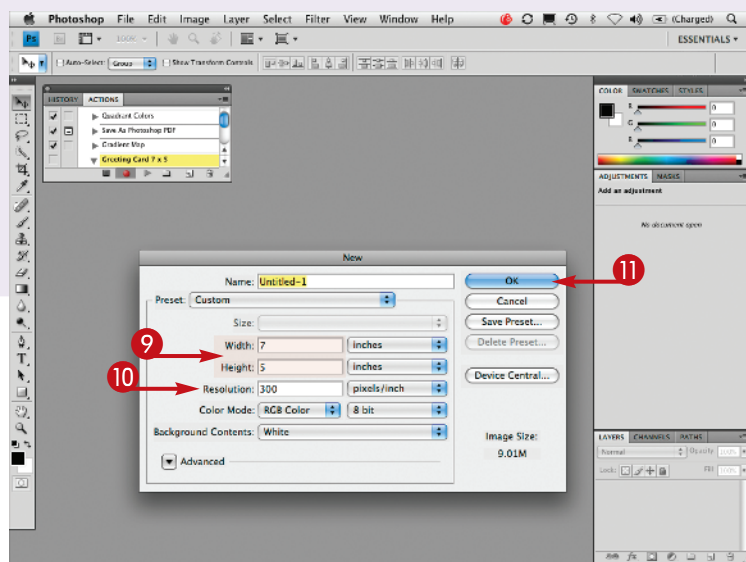
To create an action for changing an image, start by opening an image.

- 1 Click Window.
- 2 Click Actions.
- 3 Click the New Action button.
 - Alternatively, you can click here and select New Action from the menu.

The New Action dialog box appears.

- 4 Type the name of your action.
- 5 Click here and select a function key for a keyboard shortcut.
 - You can click here and select a color for the action.
- 6 Click Record.
 - The Record button in the Actions panel turns red.
- 7 Perform the steps that you want to record as an action.





- 8 Press **⌘+N** (Ctrl+N) to open a new file.

The New file dialog box appears.

- 9 Type your specific dimensions in the Width and Height fields.

- 10 Type **300**, or your desired resolution, in the Resolution field.

- 11 Click OK.

- A new untitled document appears.

- 12 After you perform the last step of your action, click the Stop Recording button.

- Your custom action is now recorded and is listed in the Actions panel.

You can test your action by pressing the keyboard shortcut that you assigned.

TIPS

More Options!

You can apply an action to a folder of files by clicking File, Automate, and Batch and selecting the action and a source folder. Or you can apply an action to a group of images from Bridge by clicking Tools, Photoshop, and Batch.

Try This!

You can make the actions easier to find by selecting Button Mode in the Actions panel's pop-up menu. Your actions change to color-coded buttons.

Did You Know?

You can load other prerecorded actions included with Photoshop CS4 such as Frames or Image Effects by clicking the Actions panel's pop-up menu and clicking a set in the bottom section of the menu.

DESIGN A CUSTOMIZED BRUSH

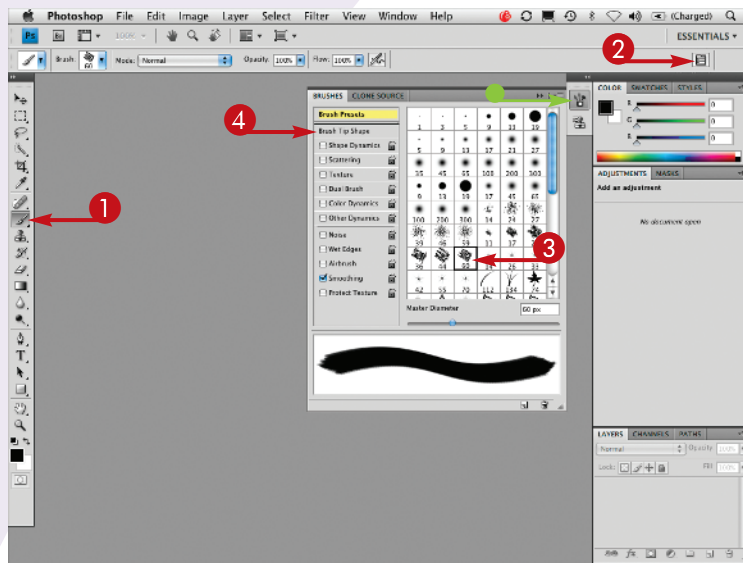
with your settings

Whether you retouch photographs, design brochures, or paint from scratch, you will use many different variations of the Brush tool.

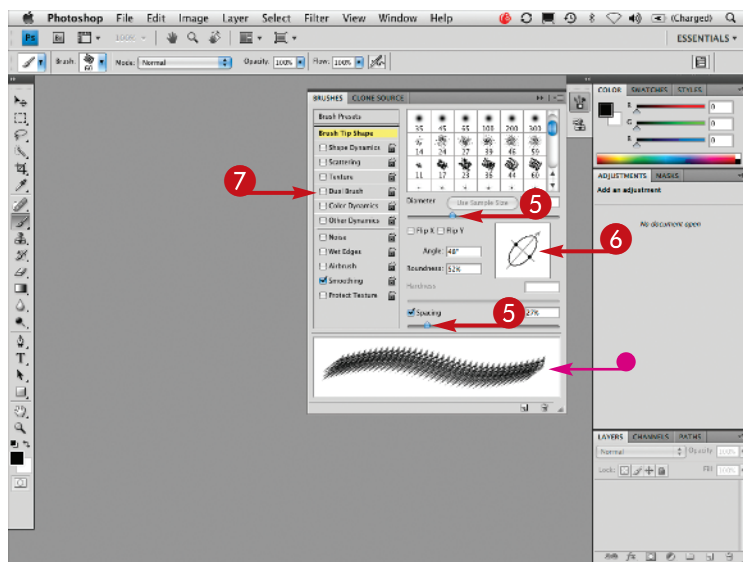
The pop-up menu on the Options bar includes a variety of brushes, and you can modify the attributes of any of the existing brushes to suit your drawing style or your image. You can then save the modified brush as your own custom brush so that it is ready to use for your next design.

A number of other tools also have modifiable brush options, including the Pencil tool, the Eraser tool, the Clone Stamp tool, the Pattern Stamp tool, the History Brush, the Art History Brush, the Blur tool, the Sharpen tool, the Smudge tool, the Dodge tool, the Burn tool, and the Sponge tool.

Customizing Brush tools for your projects is a timesaving technique, and it is fun.

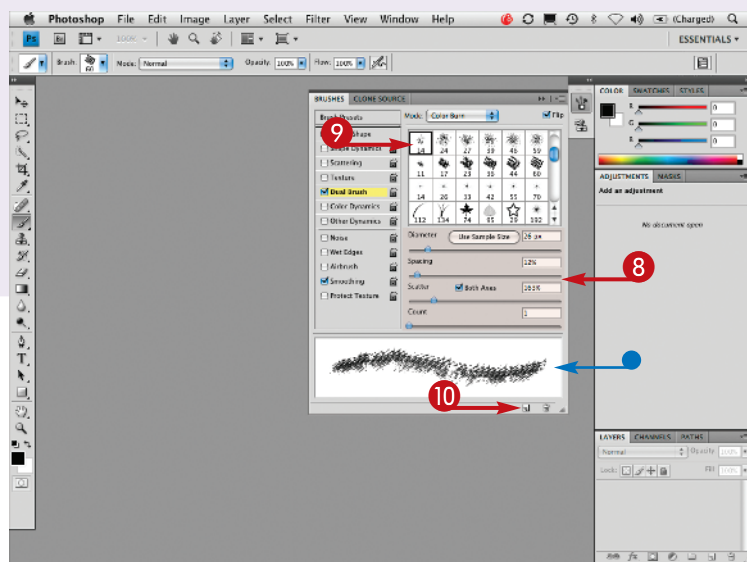


- 1 Click the Brush tool.
 - 2 Click the Brushes panel toggle button.
 - 3 Click the preset brush that you want to modify into a custom brush.
 - 4 Click Brush Tip Shape.
- You can also click the Brushes panel button if it is visible.
- The Brushes panel opens.



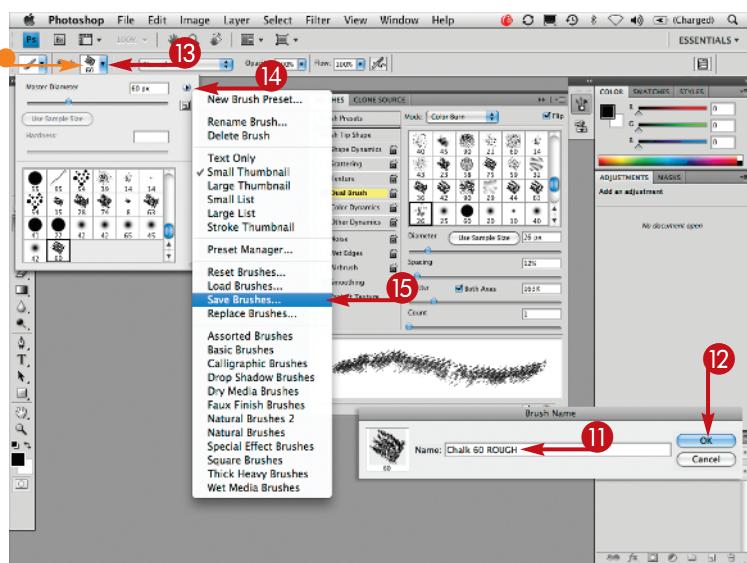
The controls for the brush shape are now visible.

- 5 Click and drag any of the sliders to change the size and look.
 - 6 Drag the black handles and gray arrow to alter the roundness and brush angle.
 - 7 Click another attribute that you want to change, such as Dual Brush (☐ changes to ☒).
- The Preview window displays the changed brushstroke.



The window changes to display new settings.

- 8 Click and drag any of the sliders to change the size and look.
- 9 Click another selection in the window.
- The Preview window displays the changed brushstroke.
- 10 Click the New Brush button at the bottom of the panel.



The Brush Name dialog box appears.

- 11 Type a name for your brush.
- 12 Click OK.
- Your customized brush is now available in the Brushes panel and stored with your Photoshop CS4 Preferences.
- 13 Click here to open the brush picker.
- 14 Click here to open the menu.
- 15 Click Save Brushes.

When the Save dialog box appears, type a name for this brush set and click Save.

Your brushes, including your new custom brush, are now saved in Photoshop CS4 Brushes folder in the Presets folder.

TIPS

Important!

You can save your brushes folder to another location on your hard drive, such as the Documents folder, rather than the Photoshop folder. Your custom brush set can then be transferred to another computer or reloaded if you have to reinstall Photoshop.

More Options!

Photoshop CS4 includes many different brush files listed both at the bottom of the submenus on the Brushes panel and the Brush options menu in the Options bar. You can load any set by clicking its name and then clicking Append in the dialog box to add this set to the existing brushes.

Did You Know?

You can view the brushes by name or as a list rather than by the stroke thumbnails. Click the pop-up menu on the Brushes Preset Picker or the Brushes panel. Click Text Only or click a list view or even a different-sized thumbnail.

MAKE A SPECIAL GRADIENT

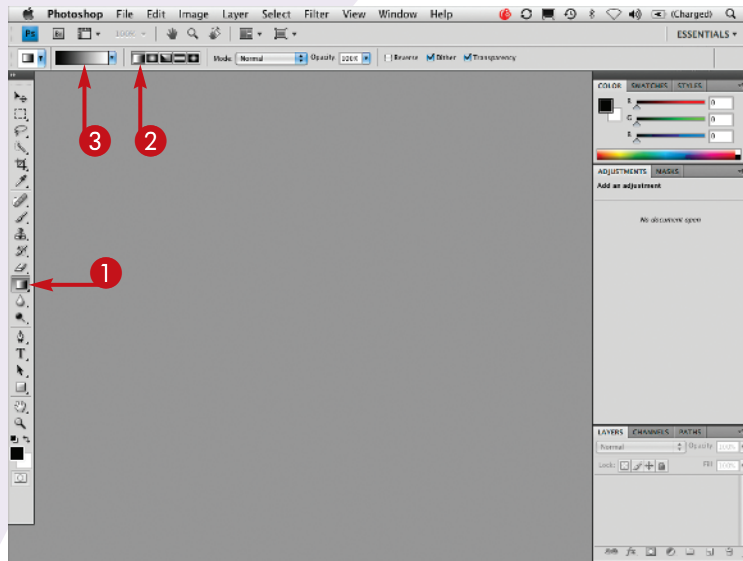
to suit your design

You can use the Gradient tool to blend colors to fill text with soft gradations of color, to fill backgrounds with a colored gradient, to work with layers and masks, and for making composite images. You can find more gradient color sets in the pop-up menu in the Options bar. You can also create your own gradient by sampling colors from areas in your image or choosing different colors altogether.

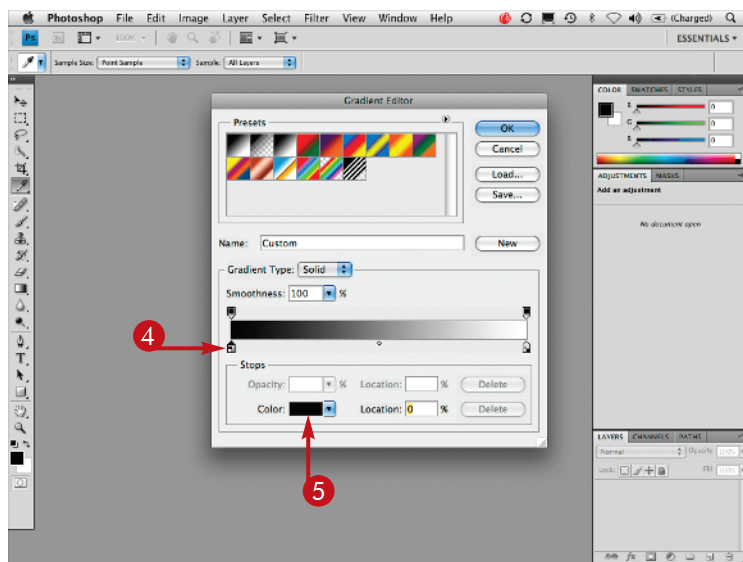
You can add intermediate colors and design a blend among multiple colors in any order that you want.

You can even design gradients that fade from any color to transparent.

You can also choose a style for the gradient, such as linear, radial, angled, reflected, or diamond. You can customize the gradients from the Gradient Editor. Start with an existing gradient and modify the colors, the color stops, and other variations in the dialog box. The possibilities are almost endless!

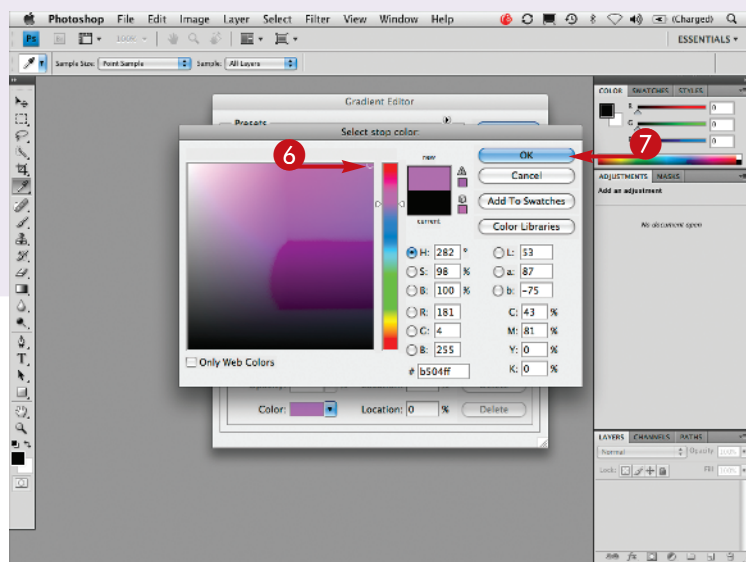


- 1 Click the Gradient tool.
- 2 Click a gradient type in the Options bar, a linear gradient in this example.
- 3 Click inside the gradient thumbnail in the Options bar.



The Gradient Editor dialog box appears.

- 4 Click the left color stop under the gradient bar to select it.
- 5 Click the Color thumbnail to choose a new color.

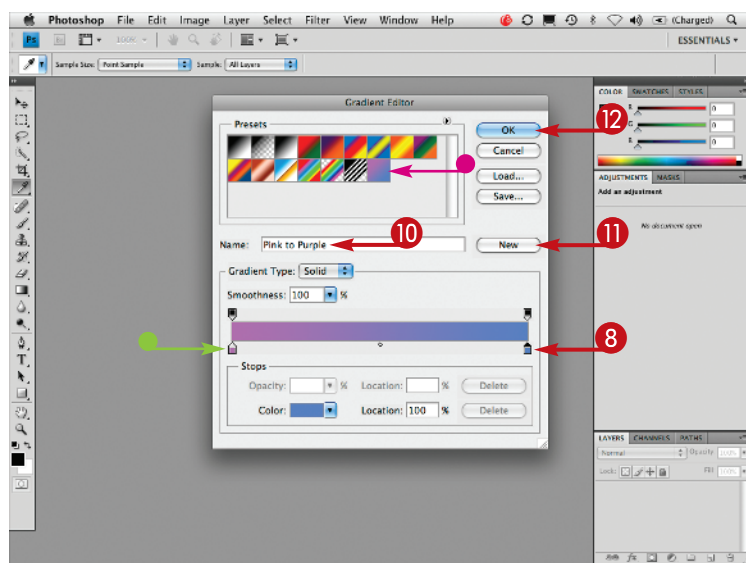


The Color Picker dialog box appears.

- 6 Select a color from the dialog box.

Note: If you have an image open, you can move the cursor over the image to select a color.

- 7 Click OK.



- The selected color fills the left color stop in the Gradient Editor.

- 8 Click the right color stop under the gradient bar to select it.
- 9 Repeat steps 5 to 7 to select the colors for the right color stop.
- 10 Type a name for your new gradient in the Name field.
- 11 Click New.
- The custom gradient appears in the presets.
- 12 Click OK.

Your custom gradient remains in the gradient presets so you can apply it again to other projects.

TIPS

Caution!

You must save your custom gradients in a preset library to avoid losing them when you reset Photoshop's preferences. Click Save in the Gradient Editor dialog box or choose Save Gradients from the pop-up menu in the Gradient picker. Type a name for your gradient library with the suffix .grd. Click Save, and your gradients are saved in Photoshop's presets.

More Options!

Vary your custom gradient by adding color stops. Press Option (Alt) and drag the first color stop to another location or drag a new color stop over other color stops. To remove a color stop, click the color stop and drag straight down.

CALIBRATE AND PROFILE

your monitor for better editing

You adjust colors in Photoshop based on what you see on the screen. Because each monitor displays color differently and because a monitor's characteristics change over time, you should calibrate and profile your monitor regularly to make sure that you are viewing the colors that are actually in your files.

Calibration is the process of setting your monitor to an established color standard. Profiling is the process of creating a data file describing how your monitor reproduces color or an International Color Consortium (ICC) profile.

You need to use a hardware calibration device called a colorimeter or spectrophotometer to accurately adjust your monitor. The software-only methods included with the operating system are too subjective. Both X-Rite and DataColor make affordable devices. A colorimeter can only correct the colors on your screen. A spectrophotometer can also measure and adjust color for your printer.

Please note that the following steps are those used with an X-Rite i1 Display LT. You can follow similar steps for an X-Rite Pantone Huey, ColorMunki, or other device.



- 1 Install and launch the software included with the device, and plug the device into a USB port.

Note: Macintosh users should be logged in as an Admin account.

- 2 Click the monitor image.
- 3 Click Easy.
- 4 Click the Forward button.



The Monitor Type screen appears.

- 5 Click to select your monitor type.
- 6 Click the Forward button.
- 7 Place your i1 Display on a black surface or place the i1 Pro in its cradle and click Calibrate.
- 8 Click the Forward button to continue.

#9

DIFFICULTY LEVEL



The Place Your Eye-One on the Monitor screen appears.

9 Place the unit on the monitor as the image shows.

10 Click the Forward button.

The screen goes black, and then a box appears under the colorimeter on the screen.

The box fills with white, then black, and then colors as the device automatically measures the color presentation capabilities of your monitor.



11 A new screen appears, showing the name of the monitor profile created by the device.

11 Click here to select a reminder for the next calibration.

12 Click the Forward button.

A dialog box appears, telling you where the profile was saved on your computer's hard drive.

13 Click OK.

14 Quit the i1 Match software application and disconnect the i1 Colorimeter or Spectrophotometer.

TIPS

Did You Know?

As monitors age, they lose their color accuracy more quickly. Calibrate and profile regularly – monthly if your monitor is new or weekly if your monitor is over two years old. CRT monitors need to warm up for 30 minutes before you calibrate and create a profile.

Important!

The brightness level of LCD monitors is often set to the maximum at the factory. When you first calibrate and profile an LCD, it may appear dark by comparison. However, after calibrating and profiling, the monitor displays a more accurate representation of the colors in your images.

More Options!

X-Rite's i1 Match software keeps a Help file open in a column along the right side of the screen explaining each step as you proceed. You can increase your understanding of color calibration by reading the explanations as you proceed.

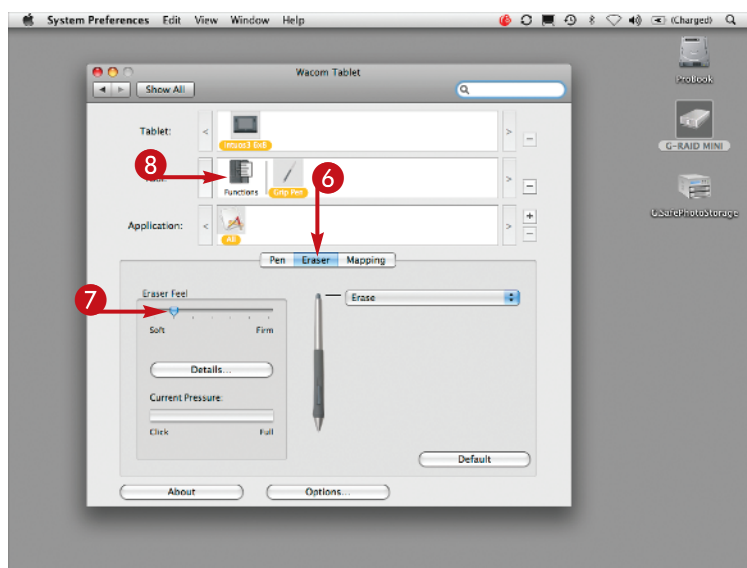
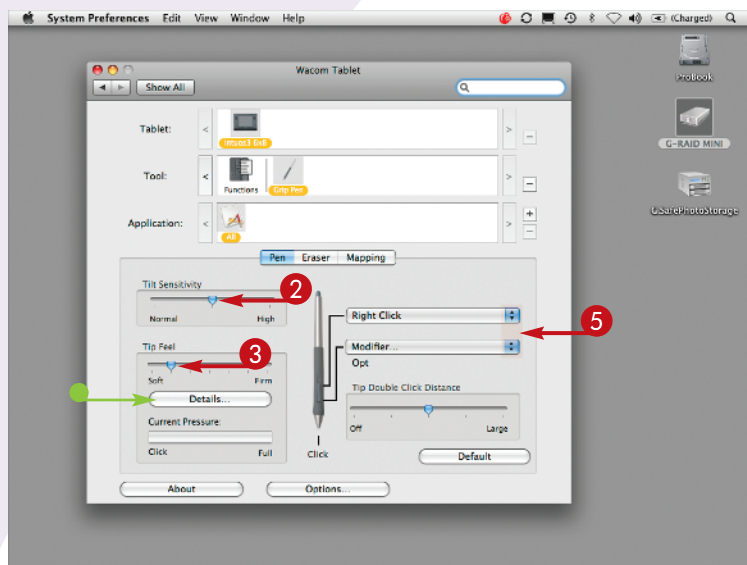
Turn on the full power of Photoshop with a PEN TABLET

Using a mouse as an input device may work for placing insertion points in text or dragging a rectangular selection in Photoshop, but using a Brush tool or selecting specific areas with a mouse is similar to writing your name with a bar of soap — clunky and inaccurate. You can edit images with greater comfort and control using a pressure-sensitive tablet and pen, such as the Wacom Intuos or Cintiq. More than 20 Photoshop tools, such as the Brushes, the Eraser, the Quick Selection tool, the Clone Stamp, the Dodge and Burn tools, and others can be customized only when a tablet is connected to

the computer. You can then change brush size, roundness, flow, or opacity by applying more or less pressure with the pen.

Instead of scooting the mouse around, you use the pen to place the cursor exactly where you want, and make precise selections or paint digitally as with a traditional paintbrush on paper.

The key to using a tablet and pen and turning on the full power of Photoshop is to start by setting the Tablet Preferences located in the System Preferences or Control Panel.

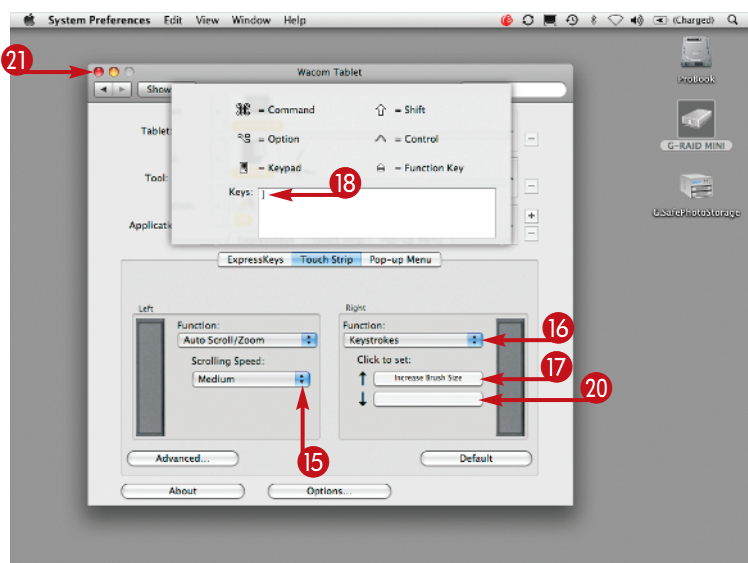
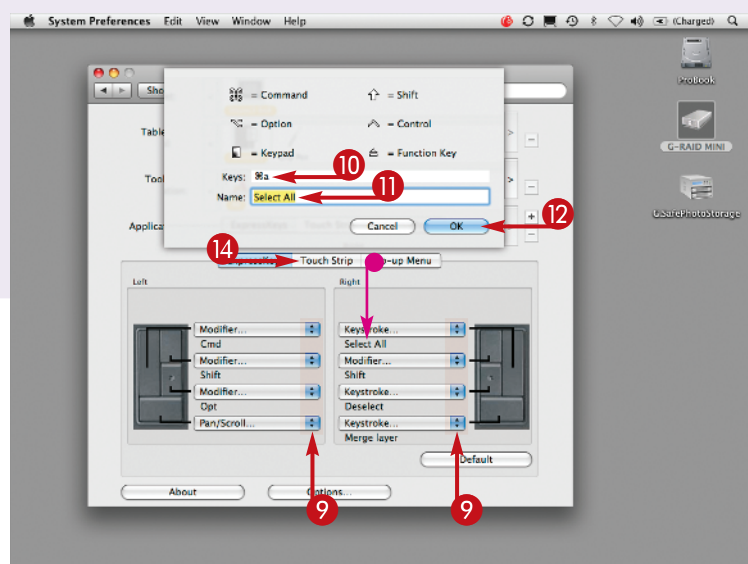


- 1 With a Wacom tablet plugged into a USB port and the Wacom driver installed, open the Tablet preferences.

The Tablet preferences open to the Pen tab.

- 2 Click and drag the Tilt Sensitivity slider to the right for greater tilt response.
- 3 Click and drag the Tip Feel slider for a softer or firmer touch.
 - You can click Details instead of using the slider.
- 4 When a window drops down, test your settings by drawing in the Try Here box. Click and drag the Sensitivity slider toward Firm or Soft, and then draw in the Try Here box again. You can also click the Try Here box and then move the Click Threshold slider toward Low or High and test again.
- 5 Click different rocker switch settings.
- 6 Click the Eraser tab.

The Eraser preferences appear.
- 7 Click and drag the Eraser Feel slider for softer or firmer eraser pressure.
- 8 Click the Functions tool to customize the tablet keys.



The ExpressKeys preferences appear.

- 9 Click any of the options to change the settings for this ExpressKey.
 - 10 Type the keystrokes in the window that drops down and click OK.
 - 11 Type a name for the Keystroke in the next window that drops down.
 - 12 Click OK to apply the keystroke and name to the ExpressKey.
 - 13 Repeat steps 8 to 12 for any other ExpressKey you want to change.
 - 14 Click the Touch Strip tab.
- The Touch Strip preferences appear.
- 15 Click here to change the scrolling speed.
 - 16 Click here and select Keystrokes.
 - 17 Click in the first Click to Set box.
 - 18 Type your keystroke preferences in the dialog box that appears and click OK.
 - 19 Type a name for the Keystroke in the next window that drops down and click OK.
 - 20 Repeat steps 16 to 18 for the other Click to Set box.
 - 21 Click the Close button.

Your custom settings are saved in the Preferences.

TIPS

Try This!

You can save different settings for each option depending on the application. Click the plus sign (+) to the right of the Application section and select an application. Then set the Pen, Eraser, ExpressKeys, and Touch Strip options for the tools you use most in that particular application and close the Tablet Preferences. Your pen tablet will respond differently depending on the application.

Important!

There are three basic types of Wacom pen tablets: the Bamboo, the Intuos, and the Cintiq, and each comes in multiple sizes. The Preferences dialog box varies slightly depending on the type of Wacom tablet you have connected.

Did You Know?

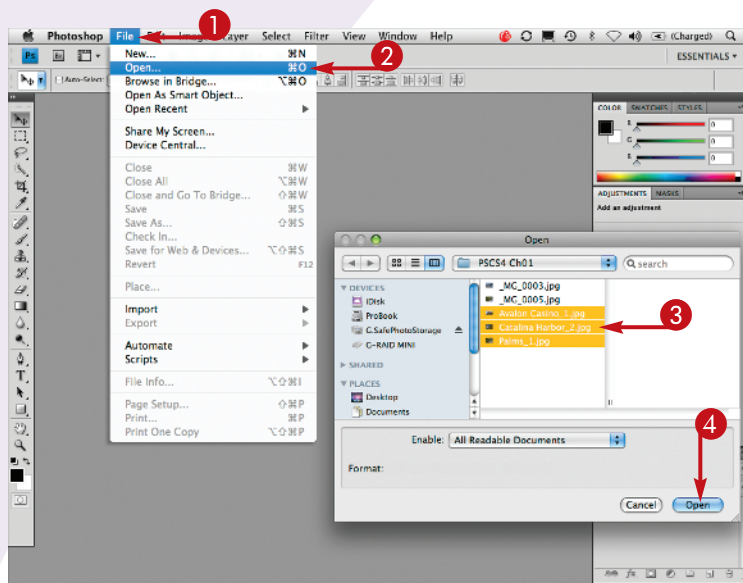
More than 20 Photoshop tools are specifically designed for use with a pressure-sensitive tablet and pen. For example, using a mouse, you can only select Off or Fade for Brush opacity. With a tablet attached to the computer, you can also select Pen Pressure, Pen Tilt and Stylus Wheel, giving you more natural and responsive control when painting or editing photos.

Change your WINDOW VIEWS

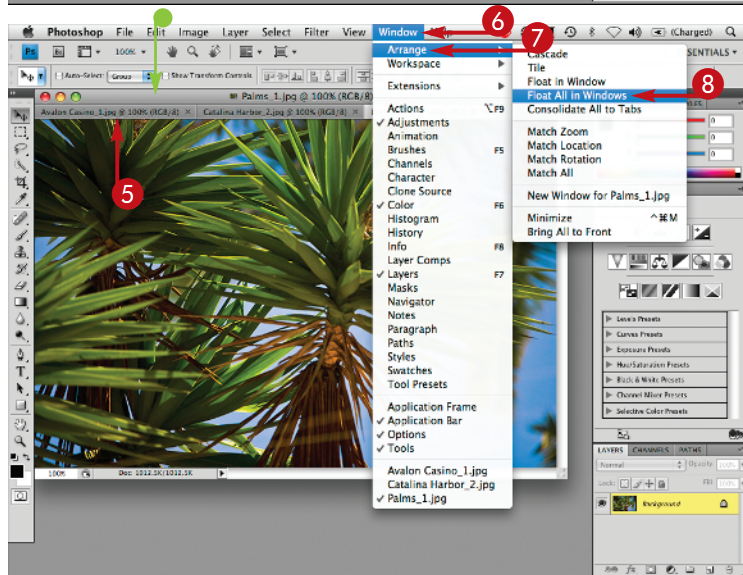
Photoshop CS4 enables you to open and view your images in various configurations on the screen. You can open multiple similar photographs at the same time to see which one is the best of the group. You can also have two windows of the same image open.

Photoshop automatically opens multiple images as separate tabs in one window. You can quickly change from one image to the next by clicking the tabs, and you can close any images you do not need by clicking X on the image tab. You can select one image and open it in a separate window while leaving

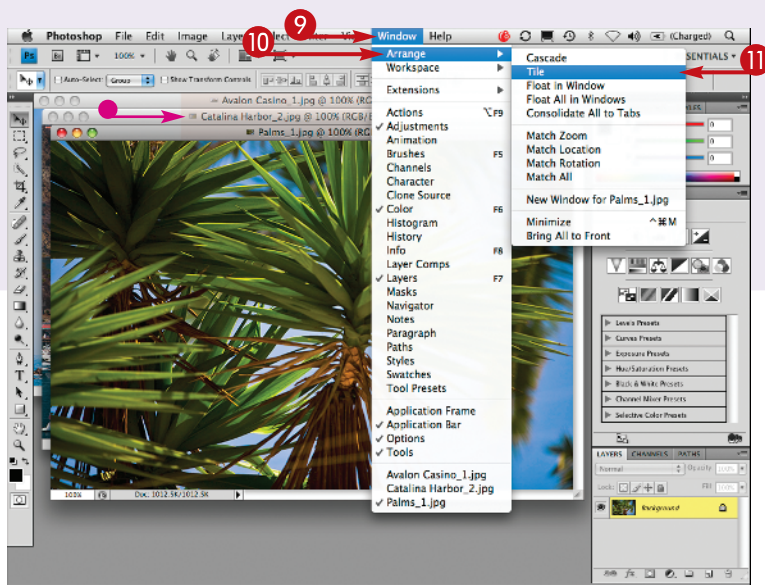
all the others as tabs in the group or view all the images as cascading individual windows. You can also tile multiple windows so they all fit on the screen at once. You can open a second window of one image and view an enlarged version in one window and the full photo in the other, so you can edit a particular area while still viewing the overall effect on the entire image. Comparing specific areas on similar photos is easy because you can match the areas displayed in each of the images and even match a zoomed-in location.



- 1 Click File.
- 2 Click Open.
- 3 Shift-click multiple images to select them.
- 4 Click Open.

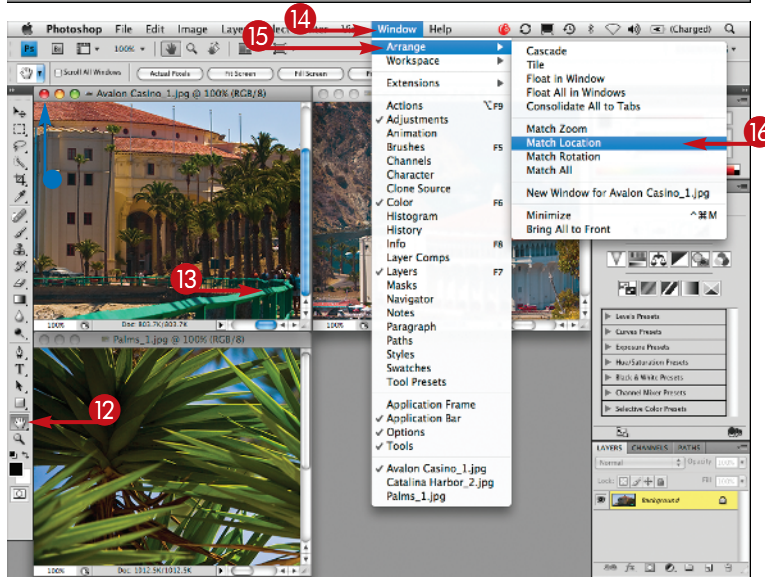


- 5 Click any tab to view a different image.
- 6 Click Window.
- 7 Click Arrange.
- 8 Click Float All in Windows.



- The images open in separate windows cascading down the screen.

- 9 Click Window.
- 10 Click Arrange.
- 11 Click Tile.



- The images tile across the screen.

- 12 Click the Hand tool.
- 13 Click and drag in one image to move it to the bottom right corner.
- 14 Click Window.
- 15 Click Arrange.
- 16 Click Match Location.

All the windows move their contents to display the bottom right corner of each image.

TIPS

Did You Know?

If you zoom in on one image and then tile the windows, you can click Window, Arrange, and Match Zoom to zoom the same amount on all the windows.

More Options!

You can drag one or more windows to a second monitor. You can then have all your tools and panels on one monitor and all your images on the other, or one version of an image on one monitor and an edited version on the other.

Try This!

Click the Arrange Documents button (📄) in the Photoshop bar and click any of the buttons to select a different tiling arrangement, or click Match Zoom, Match Location, or Match Zoom and Location to quickly change your window views.