

CHAPTER

1

Getting Started with Your iMac



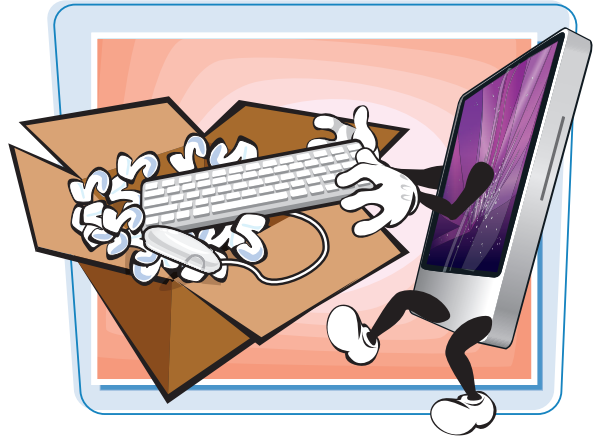
The iMac is a beautifully designed computer and comes with the powerful, easy-to-use Mac OS X operating system. In just a few minutes, you can set up your iMac and begin using it. This chapter shows you how to get started with your iMac, use the Mac OS X interface, and connect extra devices to the iMac.

Set Up Your iMac	4
Start Your iMac and Log In	6
Connect Your iMac to the Internet.....	8
Connect Your iMac to a Wired Network.....	10
Connect Your iMac to a Wireless Network.....	12
Connect a Printer to Your iMac.....	14
Connect an iPod or iPhone to Your iMac.....	16
Connect External Drives to Your iMac.....	18
Give Commands from the Menus and Toolbar	20
Open, Close, Minimize, and Hide Windows	22
Put Your iMac to Sleep and Wake It Up	24
Log Out and Shut Down Your iMac	26

Set Up Your iMac

If you have just bought your iMac, you need to connect its hardware and create your user account before you can use it.

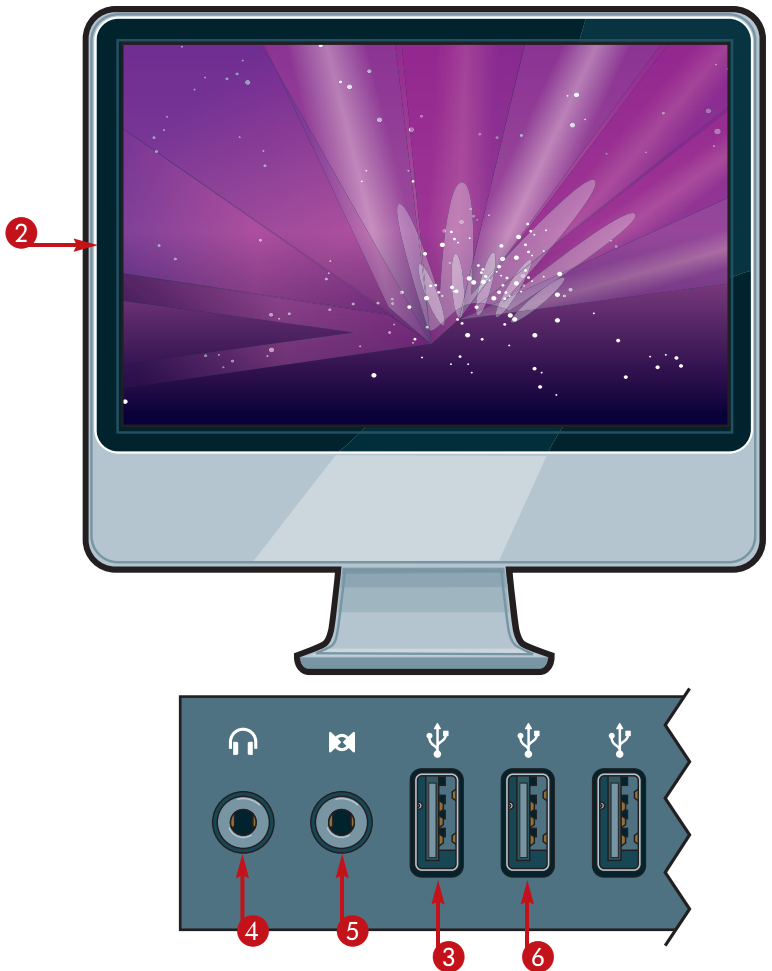
Your user account is where you store your files and settings. The first user account you create is the administrator account, which can create other user accounts later for other users.



Set Up Your iMac

Set Up Your iMac's Hardware

- 1 Unpack the iMac from its box.
- 2 Position the main unit on your desk or table.
- 3 If you have a wireless keyboard, turn it on by pressing the power button on its right side. If you have a wired keyboard, connect its cable to a USB port at the back of the iMac.
- 4 Connect your speakers to the audio out port.
- 5 Connect your microphone to the audio in port.
- 6 If you have a wireless mouse, turn it on by moving the on/off switch on its underside. If you have a wired mouse, connect its cable to a USB port on the keyboard or at the back of the iMac.
- 7 Connect the power supply to the iMac and plug it into a power source.
- 8 Press the power button to start the iMac.



Note: On most iMacs, the power button is located at the back of the unit, at the lower left corner looking from the front.

Create Your User Account

1 In the Welcome screen, click your country or region and then click the arrow. Follow through the registration information screens to the Create Your Account screen.

2 Type the user's full name.

3 Change the account name that Mac OS X suggests as needed.

Note: You cannot change the account name afterward. You can change the other items.

4 Type a password.

5 Click **Continue**.

6 In the Select a Picture for This Account screen, click **Take photo snapshot** to take a photo of yourself using the iMac's camera.

Note: You can also use a picture from the picture library. Click **Choose from the picture library**, and then click the picture you want.

7 Click **Continue**, and then finish the installation.

Create Your Account

Enter a name and password to create your user account. You need this password to administer your computer, change settings, and install software.

Full Name: 2

Account Name: 3
This will be used as the name for your home folder and can't be changed

Password: 4

Verify:

Password Hint:

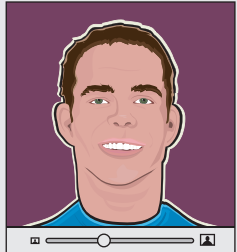
Enter a hint to help you remember your password. Anyone can see the hint, so choose a hint that won't make it easy to guess your password.

5

Select a Picture for This Account

6 ☒ Take a snapshot

☐ Choose from the picture library



7

TIP

Should I create a MobileMe account?

This is entirely up to you. Mac OS X setup encourages you to sign up for an account with MobileMe, Apple's online service. MobileMe gives you an e-mail account, space for storing data online and publishing Web sites and photos, and a way to synchronize data among Macs. After a 60-day free trial, a MobileMe account costs \$99 per year, or \$149 for a family account. You can find discounted prices at online sites such as Amazon.com.

You need to have an Internet connection to set up a MobileMe account. If you do not yet have an Internet connection, you can set up an account later from the MobileMe pane in the System Preferences window.



Start Your iMac and Log In

When you are ready to start a computing session, start your iMac and log in to Mac OS X.



Start Your iMac and Log In

- 1 Press the power button on the iMac.

Note: On most iMacs, the power button is located at the back of the unit, at the lower left corner when you are looking from the front.

A window showing the list of users appears.

Note: Your iMac may not display the list of users and Log In window. Instead, it may simply log you in automatically or show a different Log In window. Chapter 2 shows you how to change this behavior.

- 2 Click your user name.



The Log In window appears.

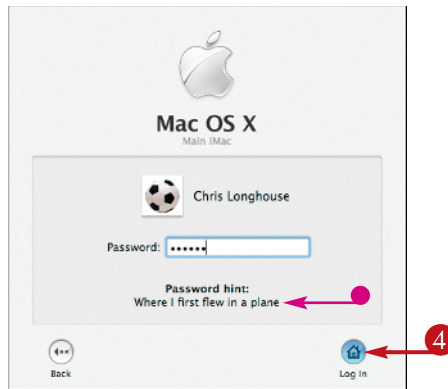
- 3 Type your password in the Password field.
- If you cannot remember your password, click **Forgot Password**.



- Mac OS X displays your password hint at the bottom of the Log In window.

4 Click **Log In**.

Note: Instead of clicking **Log In**, you can press **Return**.



The iMac displays your desktop, the menu bar, and the Dock. You can now start using the iMac.



TIPS

Why does my iMac not display the list of user names but goes straight to the desktop?

If you do not see the list of names and then the Log In window, your iMac is set to log in automatically. Logging in automatically is convenient when you are the only user of your iMac, but it means that anyone who can start your iMac can log in. Chapter 2 shows you how to turn off automatic login.

Why does my iMac not show the list of user names?

Instead of the list of user names, you may see a window with a Name field and a Password field. Type your user name and your password, and then click **Log In** (●). Hiding the list of user names gives extra security and is widely used in companies, but it is usually not necessary for iMacs used at home.




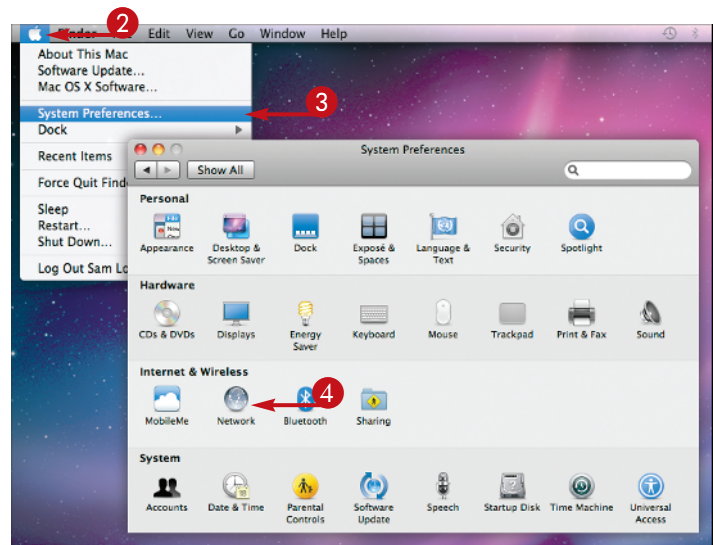
Connect Your iMac to the Internet

To browse the Web and use e-mail, you must connect your iMac to the Internet. This section shows general steps for using a DSL router or cable router connected directly to your iMac. The specifics depend on your Internet service provider and the equipment they supply; some providers install the router and make sure it is working, whereas others provide a self-install kit. If you have a network that includes an Internet connection, see the next four pages.



Connect Your iMac to the Internet

- 1 Connect the DSL router or cable router to your iMac with an Ethernet cable as instructed.
- 2 Click .
- 3 Click **System Preferences**.
- 4 In the System Preferences window, click **Network**.



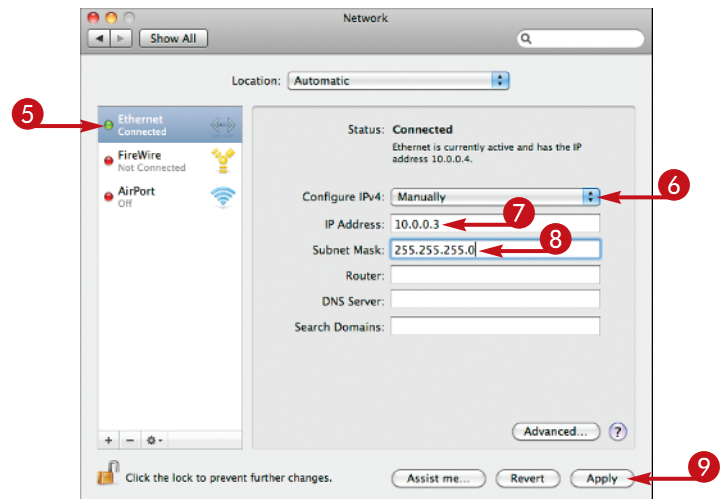
- 5 In the Network preferences pane, click **Ethernet**.
- 6 Open the Configure IPv4 pop-up menu and choose **Manually**.
- 7 Type the next IP address after the router's address. For example, if the router uses the IP address **10.0.0.2**, type **10.0.0.3**.

Note: Most DSL routers and cable routers use an address in the 192.168.0.x range, the 192.168.1.x range, the 10.0.0.x range, or the 10.0.1.x range, where x is a number between 1 and 255.

- 8 Type the subnet mask.

Note: Most DSL routers and cable routers use the subnet mask 255.255.255.0.

- 9 Click **Apply**.



10 Click **Safari** (📄) on the Dock.

11 In the Safari browser window, type the address for the router and press **Return**.

Note: If the router prompts you for a password, type the password provided in the documentation.

12 In the router's control screens, choose settings for the router following your ISP's instructions.

13 Click **Apple** to display the Apple Web site to test your Internet connection.

14 Click the **Minimize** button (⏏) to minimize the Safari window to the Dock.

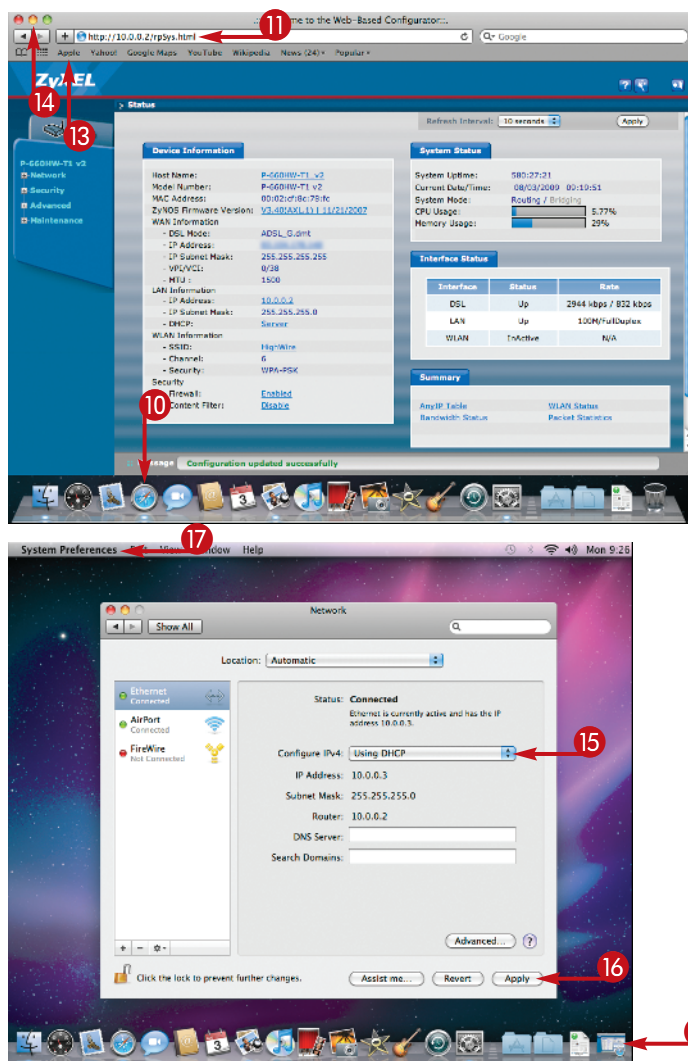
15 In Network preferences, open the Configure IPv4 pop-up menu and choose **Using DHCP**.

16 Click **Apply**.

17 Click the **System Preferences** menu and click **Quit System Preferences** to close System Preferences.

18 Click the minimized Safari window on the Dock.

The Safari window reappears, and you can browse the Internet.



TIP

Which kind of Internet connection is better, DSL or cable?

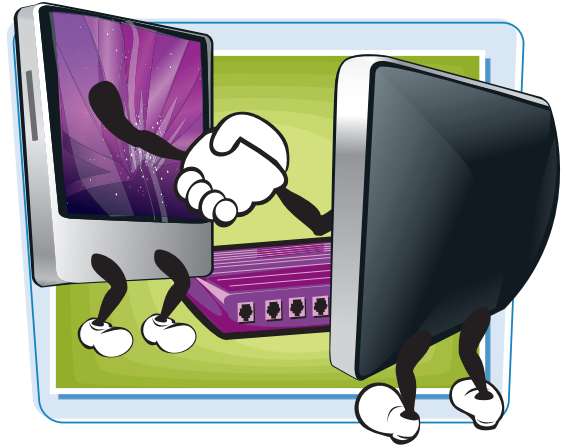
A digital subscriber line, or DSL, provides a high-speed Internet connection over a phone line. DSL divides the phone line into a data part and a voice part, so you can connect to the Internet even when the phone is in use. Cable Internet provides Internet access through your cable TV cabling. Both cable and DSL speeds depend on your location, so ask the providers what speeds are available and how much service costs. Ask how many other users will share the same network circuit; the more users, the more the speed drops.

If you cannot get either DSL or cable Internet service, look at satellite services, which are available in remote locations where DSL and cable are not. The other alternative is a dial-up connection using a modem and a phone line, but this is very slow compared to the other options.



Connect Your iMac to a Wired Network

If you have a wired network, you can quickly connect your iMac to it so that the iMac can use the network's Internet connection and can share files and printers with other computers on the network.



Connect Your iMac to a Wired Network

- 1 Connect one end of a network cable to the Ethernet port on the back of your iMac.
- 2 Connect the other end of the network cable to an Ethernet port on your network switch or network router.

Your iMac automatically detects the network connection and tries to apply suitable settings.

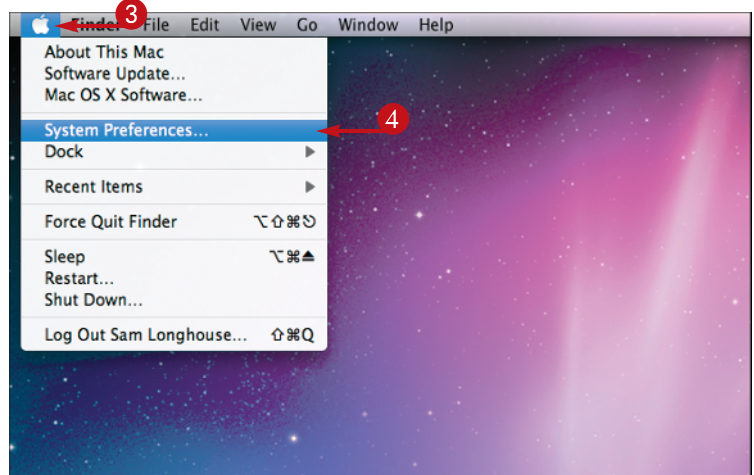
- 3 Click .

The Apple menu opens.

- 4 Click **System Preferences**.

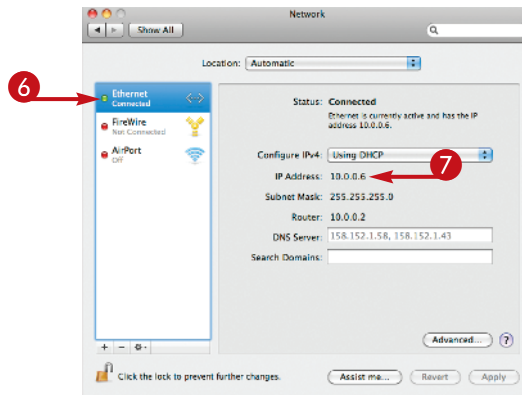
The System Preferences window opens.

- 5 Click **Network**.



The Network preferences pane opens.

- 6 Click **Ethernet**.
- 7 Verify that your iMac has an IP address.
- 8 Click the **System Preferences** menu and click **Quit System Preferences**.



- 9 Click **Safari** (🍌) on the Dock.

A Safari browser window opens and displays your iMac's home page, the page Safari opens automatically.

You have now connected your iMac to the network and the Internet.



TIPS

How does a computer network work?

A wired network has a network switch or network router that directs the data around the network. Each computer connects to the switch or router via network cables. You typically connect your Internet router to the switch or router as well to share the Internet connection on the network; some Internet routers have a network router built in. Networked computers can also share files and printers with each other.

What is an IP address and what is DHCP?

An IP address is a number that identifies a computer on a network. An IP address consists of four groups of one, two, or three digits, such as 10.10.0.100 or 192.168.1.10. DHCP stands for Dynamic Host Configuration Protocol and is a way of allocating IP addresses to computers on the network. When a computer joins the network, it requests an IP address and other connection information from the DHCP server. Most cable and DSL routers act as DHCP servers.



Connect Your iMac to a Wireless Network

If you have set up a wireless network, you can connect your iMac to it. Wireless networks are convenient for both homes and businesses because they require no cables and are fast and easy to set up.

Your iMac includes a wireless network card called AirPort. AirPort is the name Apple uses for its wireless networking hardware and software.



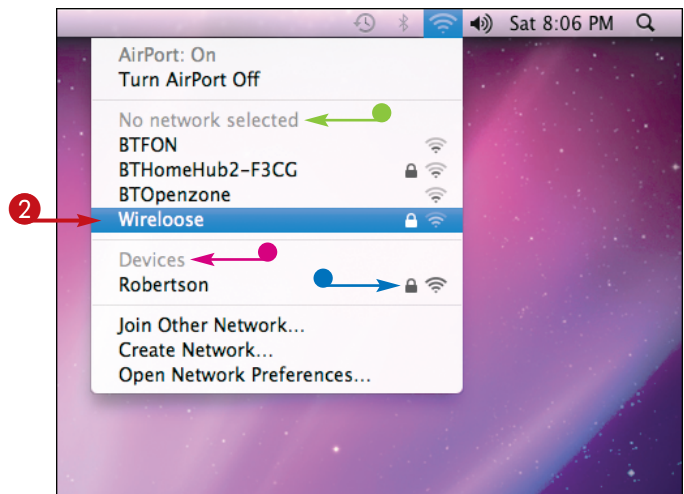
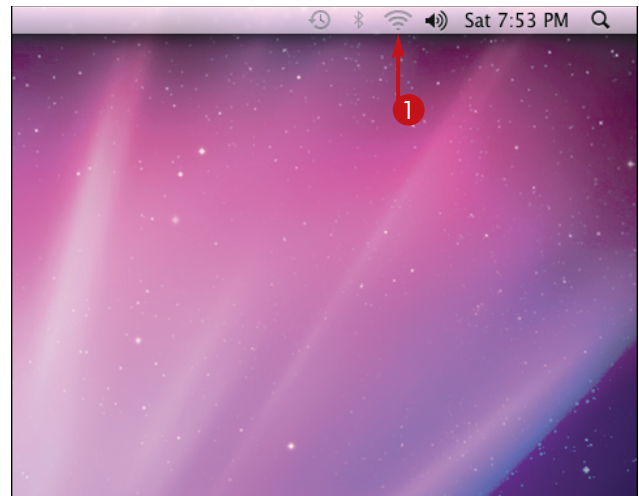
Connect Your iMac to a Wireless Network

- 1 Click the AirPort status icon (📶) on the menu bar.

The menu opens and displays a list of the wireless networks your iMac can detect.

Note: If the AirPort menu shows *AirPort: Off*, click **Turn AirPort On**. Then open the menu again to see the available wireless networks.



- The networks in the No Network Selected part of the list are networks that connect using wireless access points. These are called *infrastructure wireless networks*.
 - The networks in the Devices part of the menu are networks created by individual computers. These are called *ad hoc wireless networks* or *peer-to-peer wireless networks*.
 - A lock icon (🔒) indicates that the network is secured with a password.
- 2 Click the network to which you want to connect your iMac.

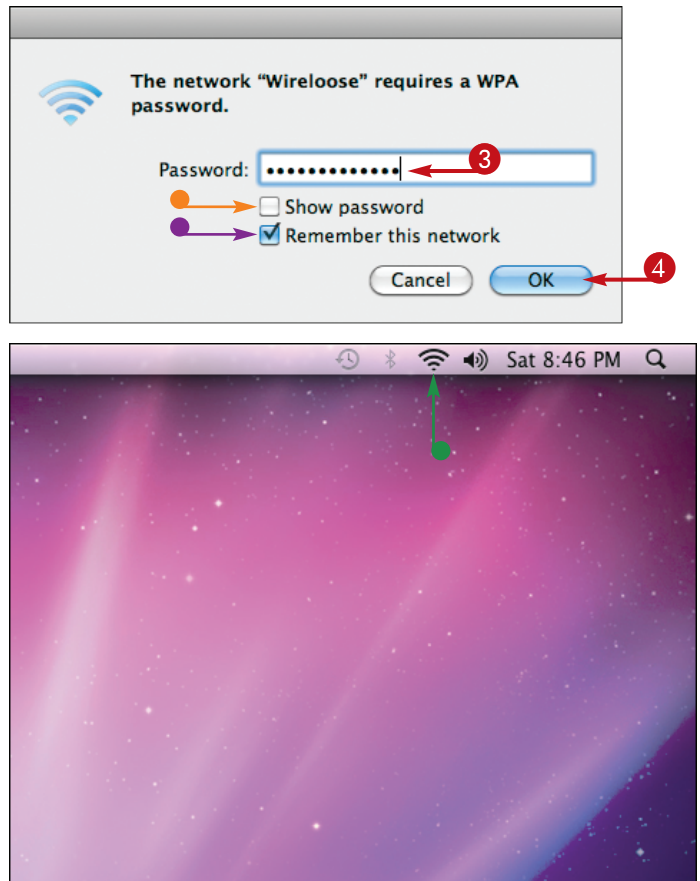


If the wireless network uses a password, your iMac prompts you to enter it.

- 3 Type the password in the Password field.
- If you want to see the characters of the password to help you type it, click **Show password** (☐ changes to ☒.
- If you do not want your iMac to remember this wireless network for future use, click **Remember this network** (☒ changes to ☐.
- 4 Click **OK**.



Your iMac connects to the wireless network, and you can start using network resources.

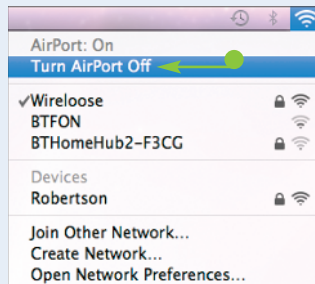
- The AirPort status icon on the menu bar changes from  to  when the connection is established. The number of arcs on the AirPort status icon indicates the strength of the connection, from one arc to four arcs.



TIPS

How do I disconnect from a wireless network?

When you have finished using a wireless network, you can disconnect from it by turning AirPort off. Click the AirPort status icon () on the menu bar and then click **Turn AirPort Off** (.



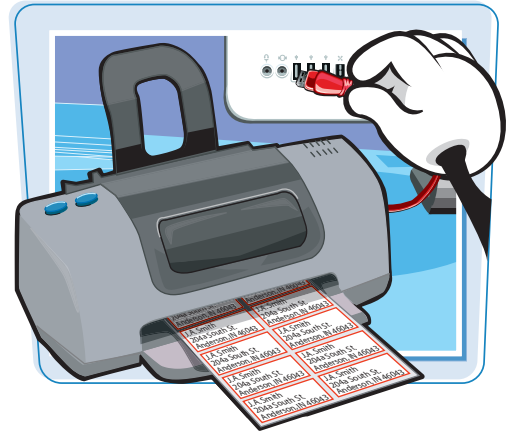
What kind of wireless network do I need for my iMac?

Wireless networks use several different standards. The latest standard is 802.11n, also called Wireless-N, and provides the fastest data rates. At this writing, Wireless-N is a draft standard rather than a final standard, and not all Wireless-N equipment works together correctly at full speed. The best choice for a Mac wireless network is one of Apple's wireless access points, such as AirPort Extreme.



Connect a Printer to Your iMac


To print from your iMac, you need to connect a printer and install a *driver*, the software for the printer. Mac OS X includes many printer drivers, so you may be able to connect your printer and simply start printing. But if your printer is a new model, you may need to locate and install the driver for it.



Connect a Printer to Your iMac

- 1 Connect the printer to the iMac with a USB cable.

Note: If the printer is connected to another Mac, connect to it as explained in Chapter 13.

- 2 Plug the printer into an electrical socket and switch it on.
- 3 Click .

The Apple menu opens.

- 4 Click **System Preferences**.

The System Preferences window opens.

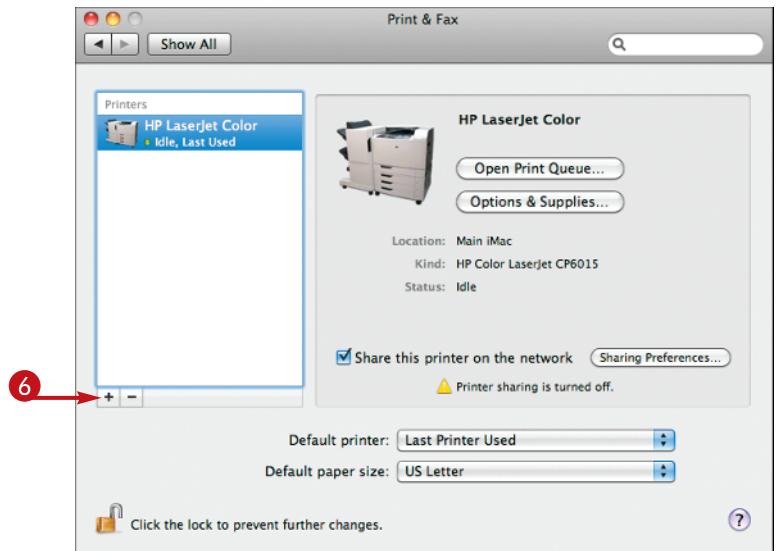
- 5 Click **Print & Fax**.



The Print & Fax preferences pane opens.

If your printer appears in the list, you have connected it successfully. Go to step 12.

- 6 If your printer does not appear, click **Add** (+).

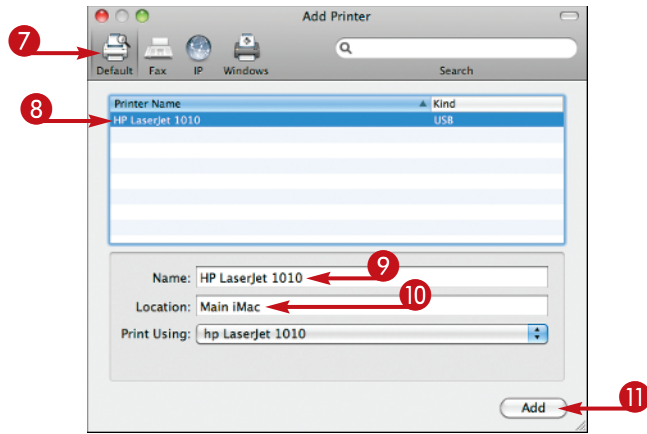


The Add Printer dialog opens.

- 7 Click **Default**.

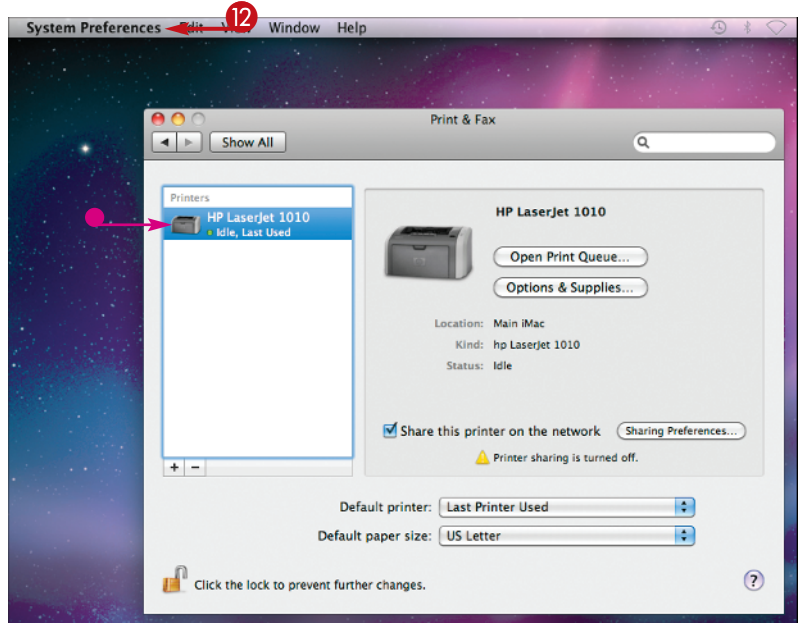
The Default pane opens.

- 8 In the Printer Name list field, click the printer.
- 9 If you want, change the printer's name.
- 10 Also optionally, change the description of the printer's location.
- 11 Click **Add**.



- Mac OS X adds the printer.
- 12 Click the **System Preferences** menu.
- 13 Click **Quit System Preferences**.

The System Preferences window closes.



TIPS

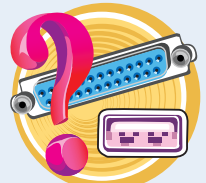
What should I type in the Name field and Location field when adding a printer?

You can type anything you want in the Name field and the Location field. This information is to help you identify the printer. If you have many printers, and some are attached to different computers, making each printer's name and location descriptive helps you keep the printers straight.



My printer has the wrong sort of connector – it must be ten times bigger than a USB connector. How can I connect it?

The large connector is a parallel port, which some older printers have. To connect the printer to your iMac, buy a parallel-to-USB adapter cable. Before you do, make sure that Mac OS X has a printer driver for your printer.



Connect an iPhone or iPod to Your iMac

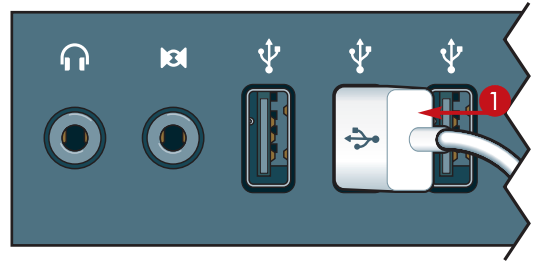
If you have an iPhone or an iPod, you can connect it to your iMac to synchronize music, videos, and information such as appointments and addresses. To connect the iPod or iPhone, you need the cable that came with the device. The cable has a USB connector at one end and a Dock connector at the other end.



Connect an iPhone or iPod to Your iMac

Connect an iPhone or iPod

- 1 Insert the cable's USB connector in a USB port on your iMac.



- 2 Insert the cable's Dock connector in the Dock connector port on the bottom of the iPhone or iPod or in the device's dock.

Your iMac detects the iPhone or iPod and launches iTunes for synchronizing it.

If you connect an iPhone that contains photos you have not synchronized with iPhoto, iPhoto opens.

Note: If you have not used this version of iTunes yet on your iMac, you must agree to its license agreement and choose settings before you can synchronize the iPhone or iPod. See Chapter 9 for information on iTunes.



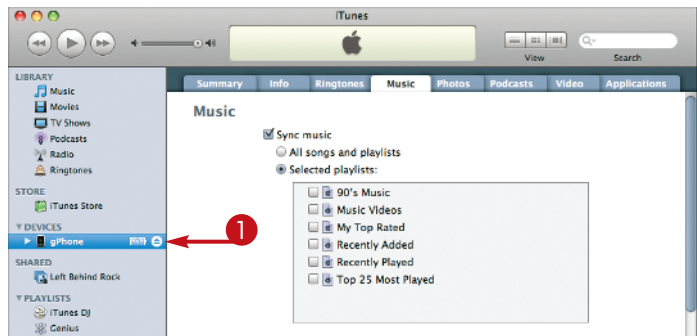
Choose Synchronization Settings for the iPhone or iPod

- 1 Click the **iPhone** or **iPod** in the Devices list.
- 2 Click each tab of the control screens in turn, and choose settings.
- 3 Click **Sync**.



Disconnect an iPhone or iPod

- 1 Click the eject button (⏏) for the iPhone or iPod in iTunes.
- 2 Press in the clips on the Dock Connector end of the cable, and then pull the connector and the iPhone or iPod apart, or remove the device from its dock.



TIPS

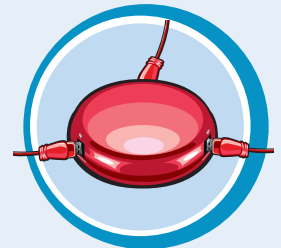
How can I tell when it is safe to disconnect my iPhone or iPod?

You can safely disconnect an iPhone unless the screen shows “Sync in Progress.” To cancel a sync, drag your finger across the **Slide to Cancel** slider on the screen. Different iPod models use different messages, but see if either the iPod’s screen or the iTunes readout displays “Do Not Disconnect” or “Eject Before Disconnecting.” Also see if a rotating icon appears next to the iPod’s listing in the Devices category of the Source list.



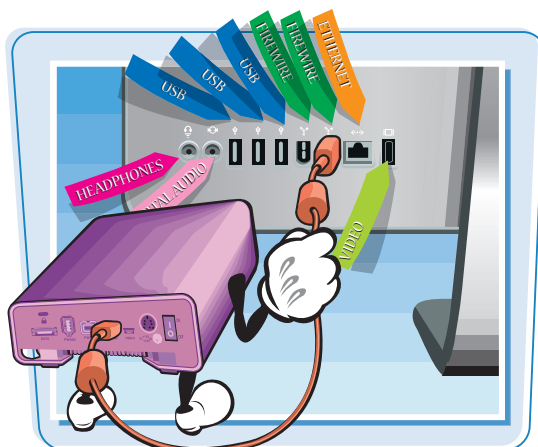
I am running out of USB ports on my iMac. Is there an alternative to unplugging cables and plugging them back in?

Buy a USB hub, a device that plugs into your iMac and provides extra ports. You can position the hub conveniently for your USB devices. You can find USB hubs at any good computer store, online or offline, including the Apple Store. Buy a powered hub for devices that do not have their own power supplies. Buy an unpowered hub for devices that do have power supplies.



Connect External Drives to Your iMac

Your iMac's built-in hard drive contains enough space for many files and applications, but you may need to connect an external drive to provide extra storage, a place for backup using Time Machine, or to transfer large files easily. You can connect an external drive to your iMac by using the USB ports or FireWire ports.



Connect External Drives to Your iMac

Connect an External Drive

1 On the back of your iMac, identify the port you need for the external drive.

- Use a USB port for a USB-connected external hard drive, a miniature drive, or a memory card reader.
- Use the FireWire 400 port to connect external hard drives that use the FireWire 400 standard.

Note: If your iMac has no FireWire 400 port, use an adapter to connect a FireWire 400 drive to the FireWire 800 port.

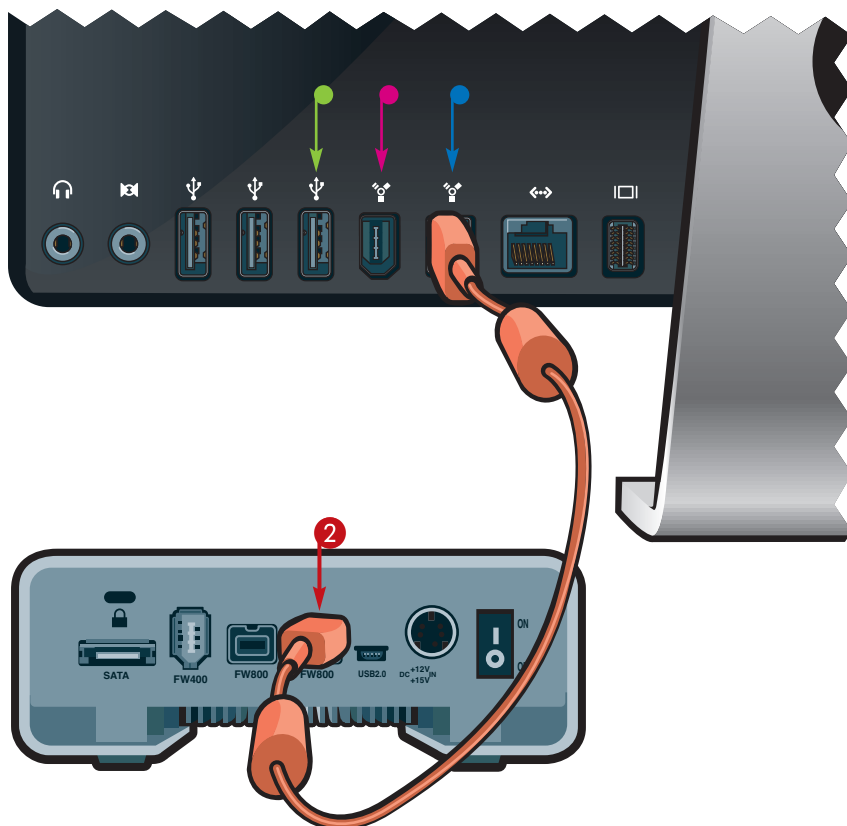
- Use the FireWire 800 port to connect external hard drives that use the FireWire 800 standard.

Note: FireWire 800 is twice as fast as FireWire 400. So if your device can use either, choose FireWire 800.

2 Connect the external drive to the iMac using the right type of cable.

3 If the external drive needs a power supply, plug it in.

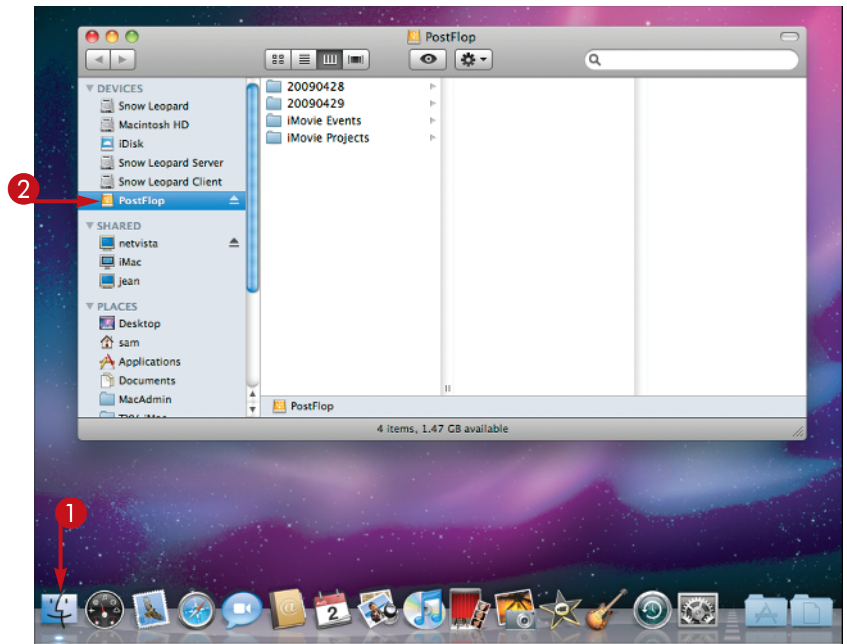
4 If the external drive has a power switch, turn it on.



Use an External Drive

- 1 Click **Finder** (🔍) on the Dock to open a Finder window.
- 2 Click the drive in the Devices list in the Sidebar.

You can then copy or move files to or from the drive or create new folders on it.



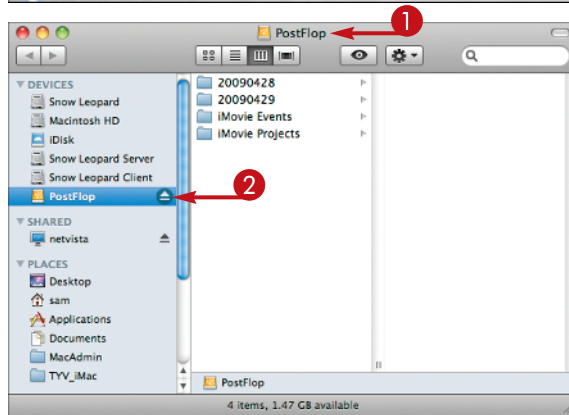
Disconnect an External Drive

- 1 Open a Finder window showing the drive.
- 2 Click the eject button (⏏) next to the drive.

Mac OS X dismounts the drive and removes it from the Finder window and from your desktop.

- 3 Disconnect the drive from the USB port or the FireWire port.

Note: You must always eject a drive using these steps before you disconnect an external drive. Otherwise, you may corrupt or lose files on the drive or on your iMac.

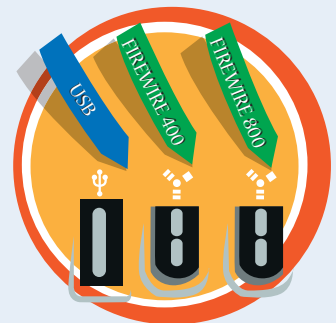


TIP

Should I choose USB or FireWire when I buy an external drive?

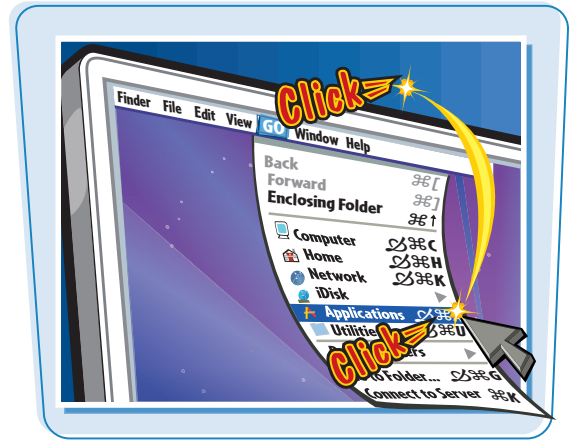
FireWire 800 is much faster than USB or FireWire 400, so it is the best choice for high-capacity drives. But if you need to connect the drive to Windows PCs as well as to your iMac, USB is better because all PCs have USB ports but few have FireWire ports.

If you need to carry an external drive with you, a miniature USB drive is usually best. These are also called “thumb drives” or “key drives,” are built to withstand life in a pocket, and contain memory chips rather than delicate rotating platters.



Give Commands from the Menus and Toolbar

The easiest ways to give commands in Mac OS X are by using the menus and the toolbar. The menu bar at the top of the window shows the Apple menu (🍏) on the left followed by the menus for the active application. Any open window can have a toolbar, usually across its top but sometimes elsewhere in the window.



Give Commands from the Menus and Toolbar

Give a Command from a Menu

- 1 On the Dock, click the application you want to activate, the Finder (🔍) in this example.

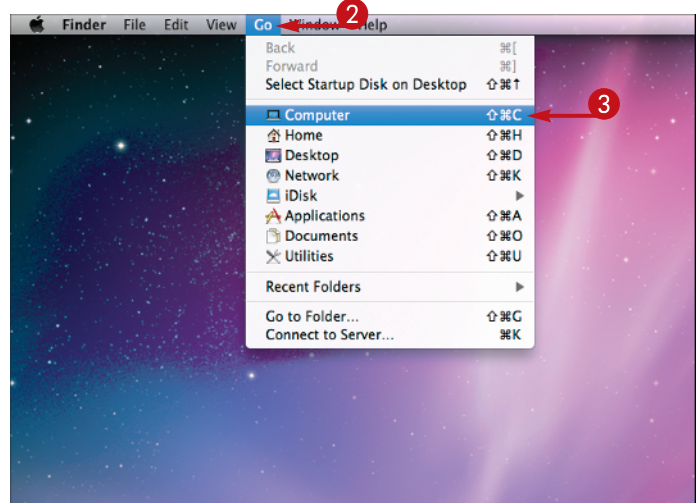
Note: You can also click in the application's window if you can see it.

- 2 On the menu bar, click the menu you want to open.

The application opens the menu.

- 3 Click the command you want to give.

The application performs the action associated with the command.



Choose among Groups of Features on a Menu

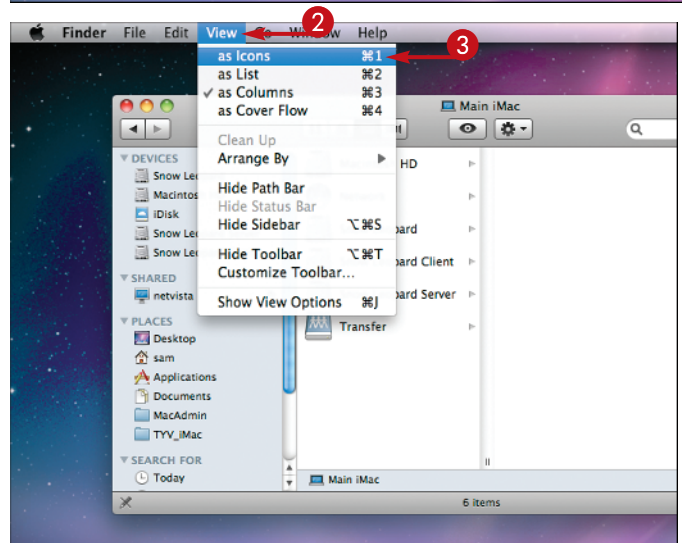
- 1 On the Dock, click the application you want to activate, the Finder (🔍) in this example.

- 2 On the menu bar, click the menu you want to open.

The application opens the menu.

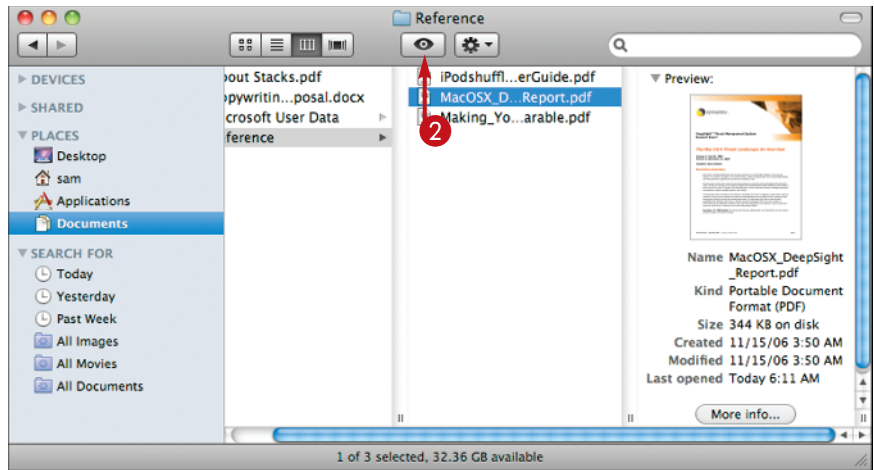
- 3 Click the option you want to choose.

The application activates the feature you chose.



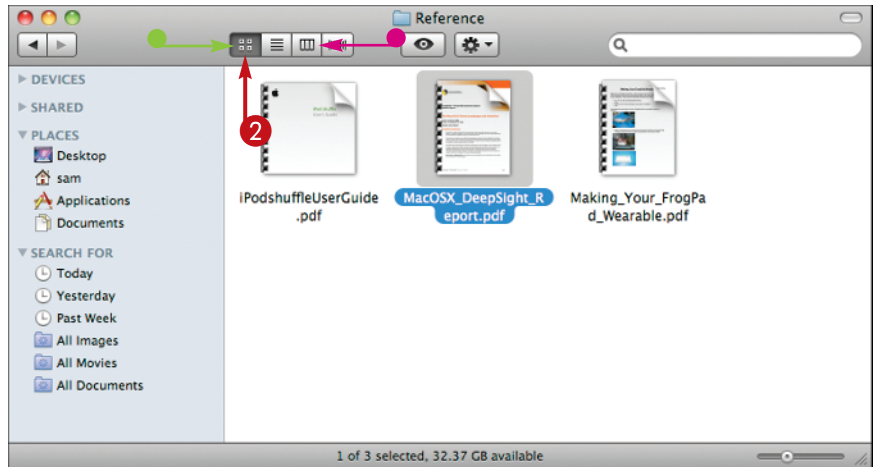
Give a Command from a Toolbar

- 1 On the Dock, click the application you want to activate, the Finder (🔍) in this example.
- 2 Click the button on the toolbar.
The application performs the action associated with the command.



Choose among Groups of Features on a Toolbar

- 1 On the Dock, click the application you want to activate, the Finder (🔍) in this example.
- 2 In the group of buttons, click the button you want to choose.
The application highlights the button you clicked to indicate the feature is turned on.
The application removes highlighting from the button that was previously selected.



TIPS

Is it better to use the menus or the toolbar?

If the toolbar contains the command you need, using the toolbar is usually faster and easier than using the menus. You can customize the toolbar in many applications by opening the **View** menu and choosing **Customize Toolbar**. Use this command, or other similar commands, to put the buttons for your most-used commands just a click away.

Can I also give commands using the keyboard?

You can give many of the most widely used commands from the keyboard as well as from the menus or the toolbar. Each menu lists keyboard shortcuts next to their commands. This symbol (⌘) represents the Command key, (⌥) represents the Option key, (⌘) represents the Control key, and (⇧) represents the Shift key.

Window	Help
Minimize	⌘M
Zoom	⌘Z
✓ iTunes	⌘1
Equalizer	⌘2
Bring All to Front	

Open, Close, Minimize, and Hide Windows

Most Mac OS X applications use windows to display information so that you can see it and work with it. You can resize windows to the size you need, position them so that you can see the windows you require, minimize windows to icons on the Dock, or hide an application's windows from view.



Open, Close, Minimize, and Hide Windows

Open a Window

- 1 Click anywhere on the desktop.

Mac OS X activates the Finder and displays the menu bar for it.

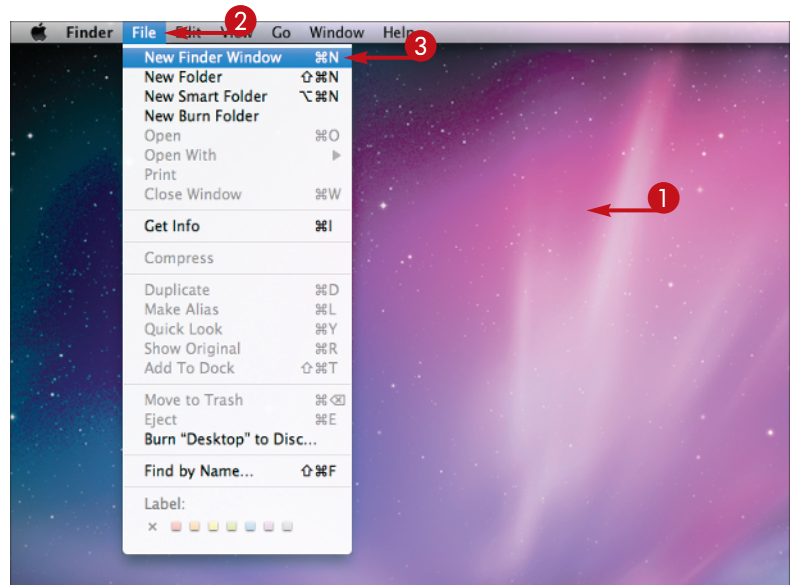
Note: Clicking anywhere on the desktop activates the Finder because the desktop is a special Finder window. You can also click **Finder** () on the Dock.

- 2 Click **File**.

The File menu opens.

- 3 Click **New Finder Window**.

A Finder window opens, showing your Home folder.



Move, Resize, and Zoom a Window

- 1 Click the window's title bar and drag the window to where you want it.

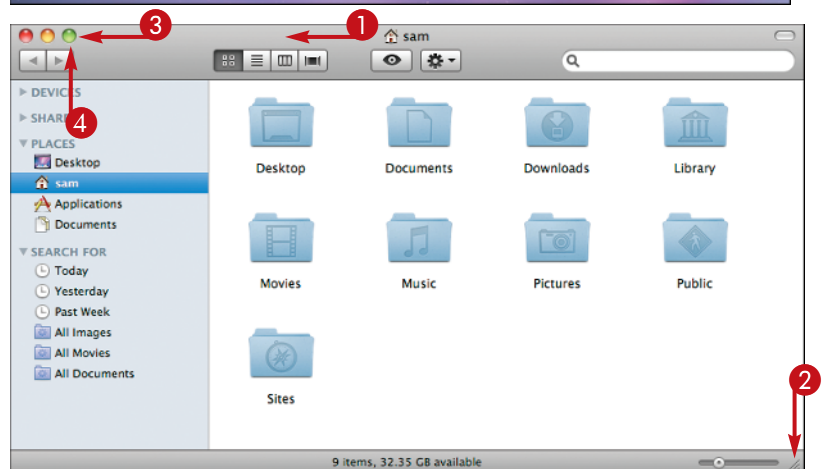
- 2 Click the lower right corner of the window and drag until the window is the size and shape you want.

- 3 Click the **Zoom** button ().

The window zooms to its optimal size.

- 4 Click the **Zoom** button () again.

The window zooms back to its previous size.



Close a Window

- 1 Click the **Close** button (ⓧ).

The window closes.

Note: You can also close a window by pressing **⌘ + W**. If you need to close all the windows of the application, **Option**-click the **Close** button (ⓧ) or press **⌘ + Option + W**.

Minimize or Hide a Window

- 1 Click the **Minimize** button (⏏).

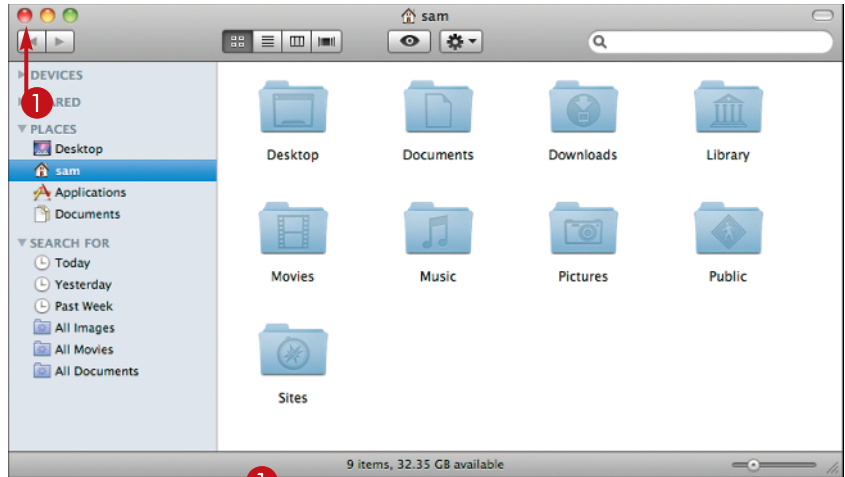
Mac OS X minimizes the window to an icon on the right side of the Dock.

Note: You can also minimize a window by pressing **⌘ + M**.

- 2 Click the icon for the minimized window.

Mac OS X expands the window to its original size and position.

Note: Press and hold **Shift** while minimizing or restoring a window to see the animation in slow motion.



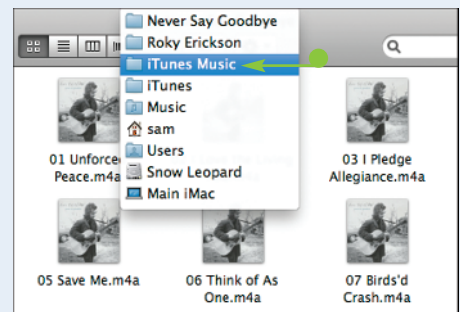
TIPS

What does zooming a window do?

Clicking the **Zoom** button (⏏) on a window changes its size to the size that Mac OS X judges will best show the window's contents. If this size does not show what you want to see, drag the lower right corner of the window to change the size. Clicking **⏏** again returns the window to its previous size.

How can I find out where a window is located?

To quickly see what folder contains a file or folder, **⌘**-click the window's name in the title bar. The window displays a pop-up menu showing the folder *path*, the sequence of folders to this folder. You can click a folder in the path (●) to jump straight to that folder in the Finder, or click the title bar to hide the pop-up menu again. This works in any application, not just in the Finder.



Put Your iMac to Sleep and Wake It Up

When you are ready for a break but you do not want to end your computing session, put the iMac to sleep. Sleep keeps all your applications open and lets you start computing again quickly. When you wake your iMac up, your applications and windows are where you left them, so you can immediately resume what you were doing.

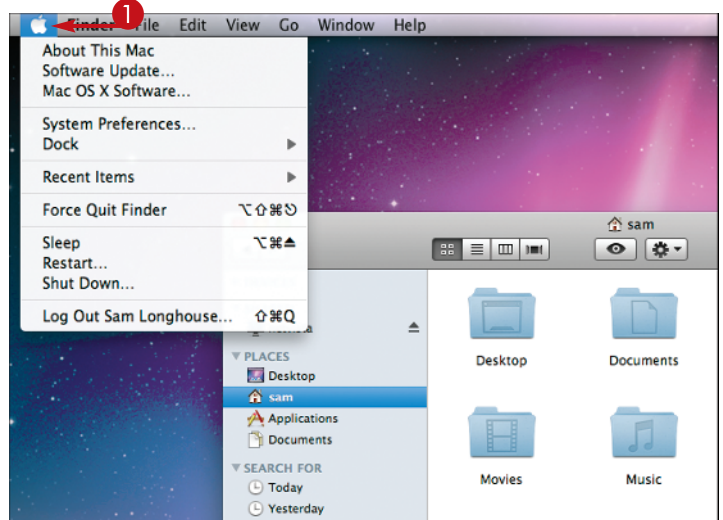


Put Your iMac to Sleep and Wake It Up

Put Your iMac to Sleep

1 Click .

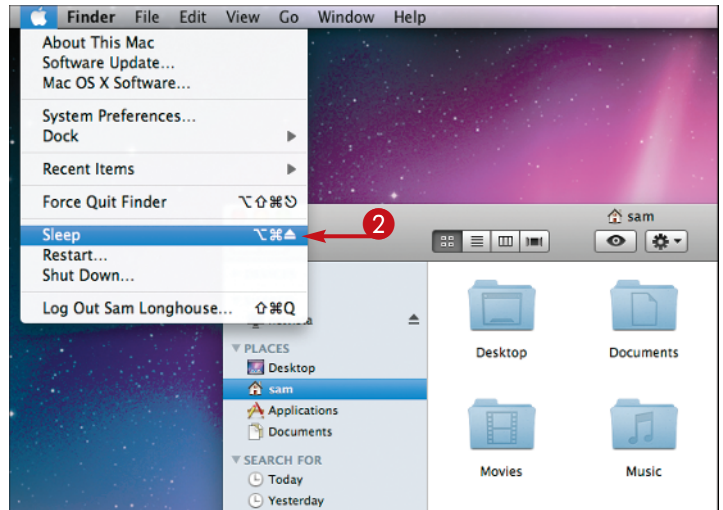
The Apple menu opens.



2 Click **Sleep**.

The iMac turns its screen off and puts itself to sleep.

Note: You can also put your iMac to sleep by pressing its power button for a moment.



Wake Your iMac

- 1 Click the mouse button or press any key on the keyboard.

The iMac wakes up and turns on the screen. All the applications and windows that you were using are open where you left them.

The iMac reestablishes any network connections that it normally uses and performs regular tasks, such as checking for new e-mail.

**TIPS****What happens if there is a power outage while my iMac is asleep?**

If a power outage occurs while your iMac is asleep, the iMac loses power and crashes, and you lose any unsaved work. For this reason, you should save any unsaved work before putting your iMac to sleep. You may also want to consider buying an uninterruptible power supply, a battery-based device which enables a computer to ride out power outages.

**When should I use sleep and when should I shut down my iMac?**

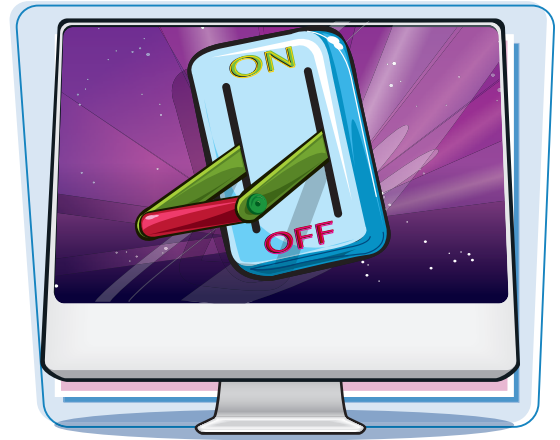
Normally, it is better to put your iMac to sleep rather than shut it down. Sleep lets you start using your iMac again much more quickly than starting it from being off, and it uses only a minimal amount of power. Shut down your Mac only when you do not need to use it for several days.



Log Out and Shut Down Your iMac

When you have finished using your iMac for now, end your computing session by logging out. Mac OS X closes all the applications and documents you were using. From the login screen, you can log back in when you want to start another computing session.

When you have finished using your iMac and plan to leave it several days, shut it down. Shutting down makes Mac OS X close all the applications and documents you were using and then turns off the iMac.



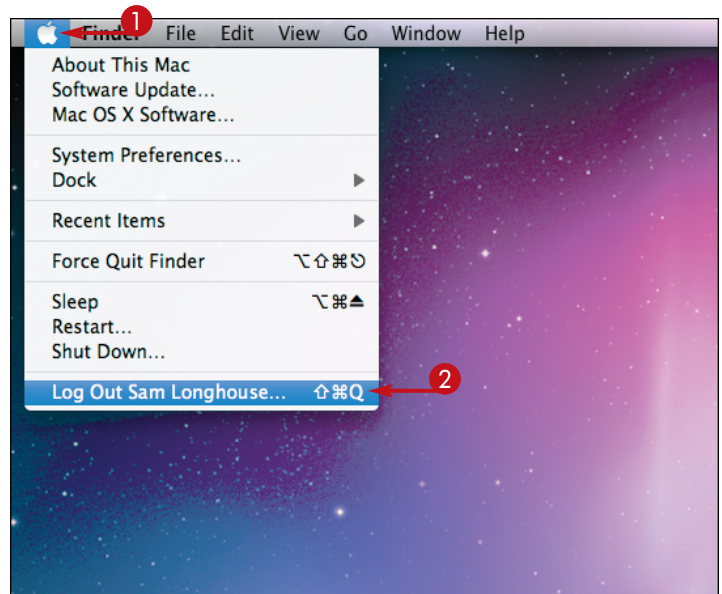
Log Out and Shut Down Your iMac

Log Out from Your iMac

- 1 Click .

The Apple menu opens.

- 2 Click **Log Out**.

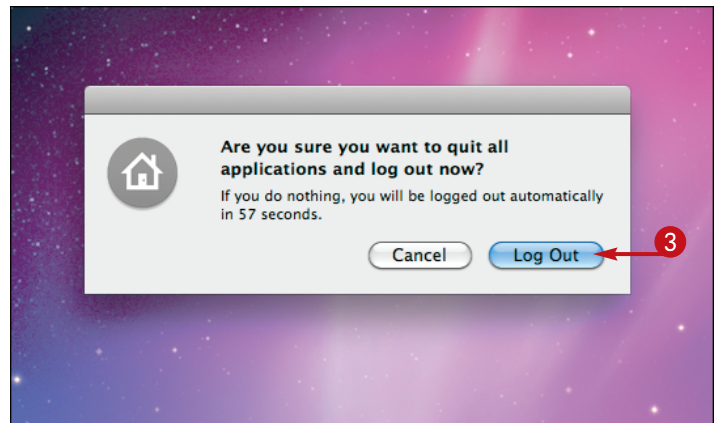


The iMac shows a dialog asking if you want to log out.

- 3 Click **Log Out**.

Note: Instead of clicking **Log Out**, you can wait for one minute. After this, the iMac closes your applications and logs you out automatically.

The iMac displays the window showing the list of users. You or another user can click your name to start logging in.

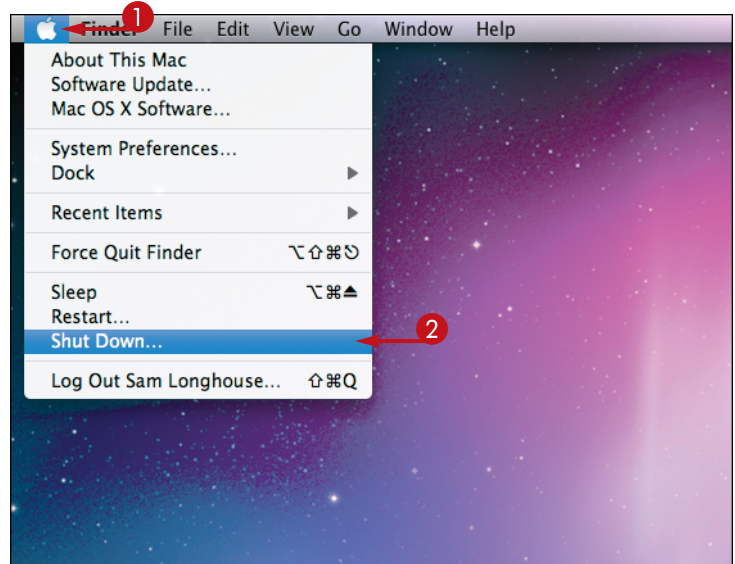


Shut Down Your Mac

- 1 Click .

The Apple menu opens.

- 2 Click **Shut Down**.

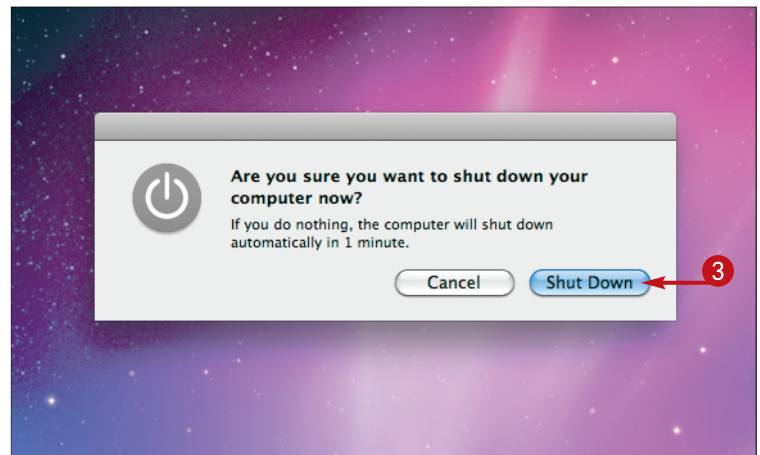


The iMac shows a dialog asking if you want to shut down.

- 3 Click **Shut Down**.

Note: Instead of clicking *Shut Down*, you can wait for one minute. After this, the iMac shuts down automatically.

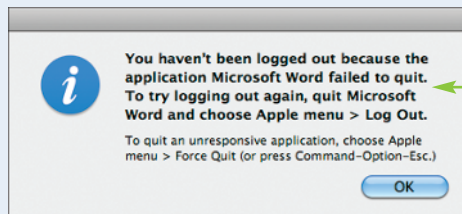
The screen goes blank, and the iMac switches itself off.



TIPS

Do I need to save my documents before logging out?

Yes. Before you log out, you should save any unsaved changes that you want to keep. If closing a document will lose unsaved changes, Mac OS X warns you and asks if you want to save the changes (●). But if you leave your iMac after clicking **Log Out**, unsaved changes can prevent the iMac from completing the logout. So it is better to save changes yourself and quit all applications before logging out.



Must I log out, or can I stay logged in?

If you are the only user of your iMac, and you keep the iMac somewhere other people cannot get to, you can stay logged in if you want. But if your iMac has other users, or other people can reach it, log out to ensure that other people cannot access or delete your files.