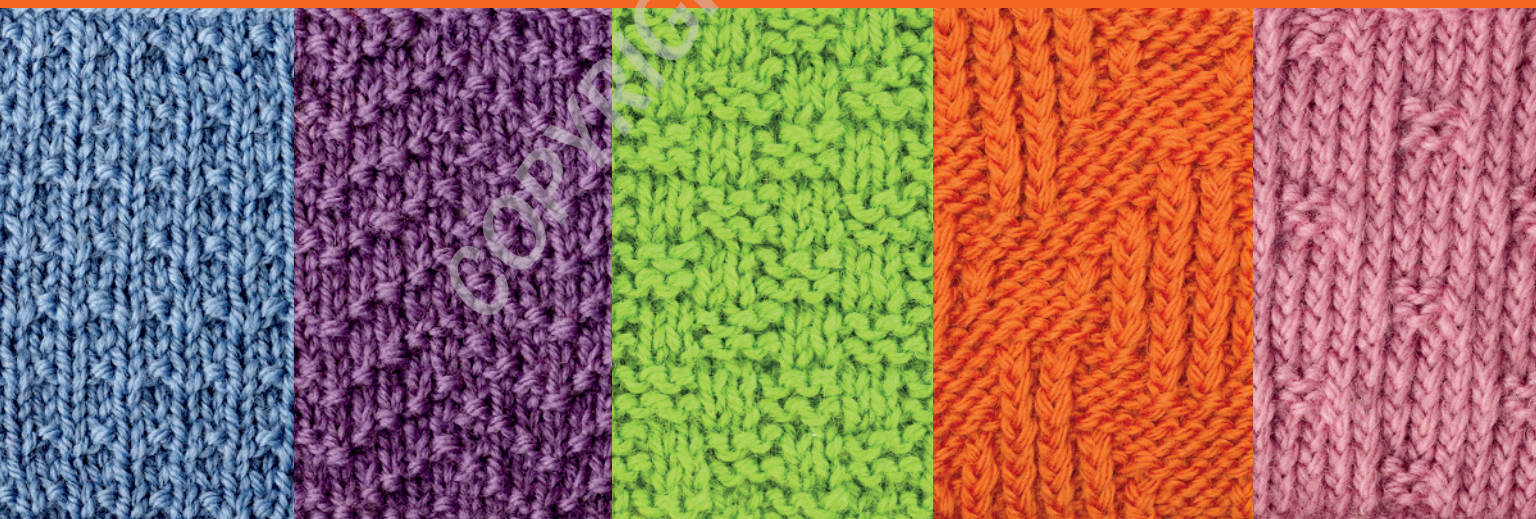


## CHAPTER 1

# Knit and Purl Patterns



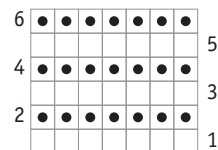
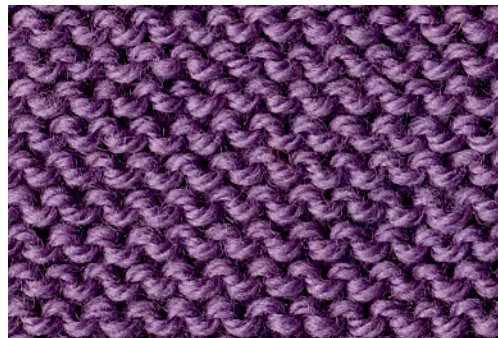
## Garter Stitch

Garter stitch is the easiest stitch pattern, and what's great about it is that it always lies perfectly flat. It looks exactly the same on both the front and the back.

Cast on any number of sts.

**Row 1:** Knit.

Rep row 1 for garter stitch.



---

## Stockinette Stitch

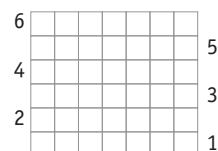
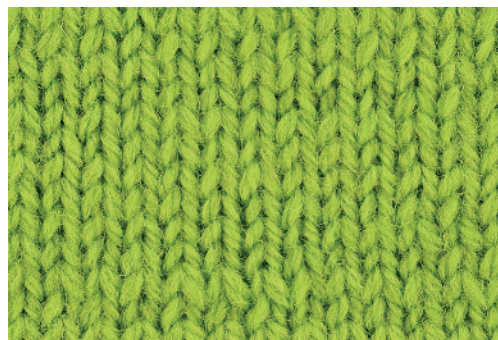
Stockinette stitch is the pattern most often used for sweaters. The right side looks like rows of flat Vs; the wrong side looks like rows of bumps.

Cast on any number of sts.

**Row 1 (RS):** Knit.

**Row 2 (WS):** Purl.

Rep rows 1 and 2 for stockinette stitch.



## Reverse Stockinette Stitch

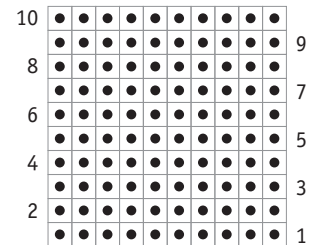
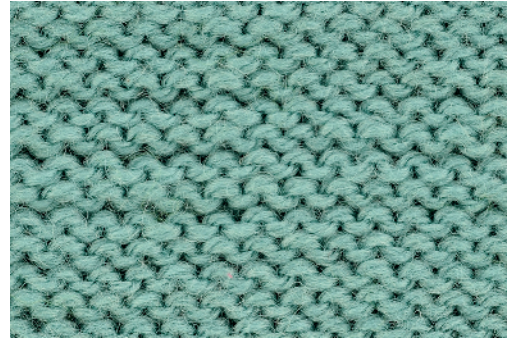
Reverse stockinette stitch is the same as regular stockinette, only the bumpy side is considered the right side, and the smooth side is the wrong side.

Cast on any number of sts.

**Row 1 (RS):** Purl.

**Row 2 (WS):** Knit.

Rep rows 1 and 2 for reverse stockinette stitch.



---

## Garter Stitch Stripe

This pattern is made up of two rows of stockinette stitch and two rows of garter stitch. You can vary the number of rows of stockinette stitch and garter stitch to create your own stripe pattern.

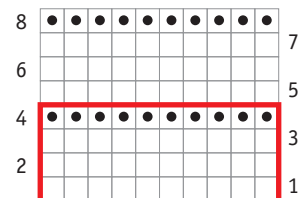
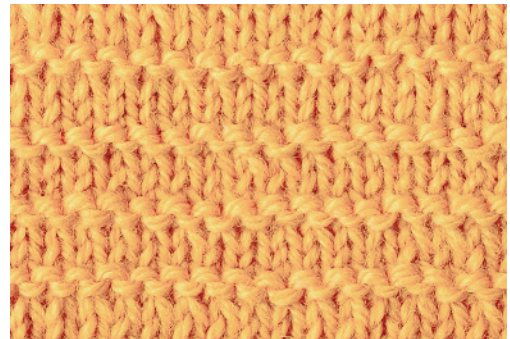
Cast on any number of sts.

**Row 1 (RS):** Knit.

**Row 2 (WS):** Purl.

**Rows 3 and 4:** Knit.

Rep rows 1–4 for garter stitch stripe.





## Reverse Stockinette Stitch Stripe

This pattern looks similar to garter stitch stripe, but because the bumpy stripes are done in reverse stockinette stitch, they are fuller and rounder.

Cast on any number of sts.

**Row 1 (RS):** Knit.

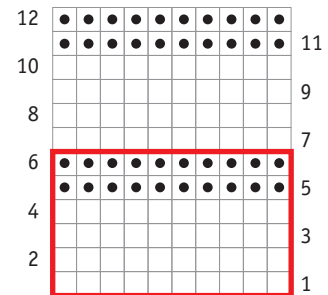
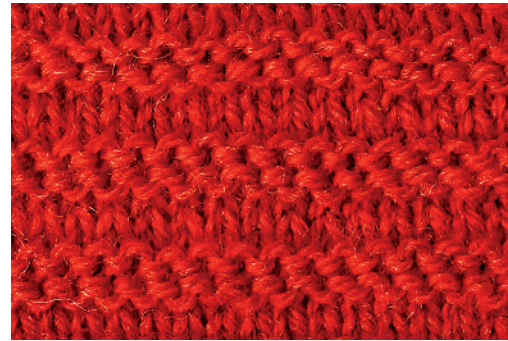
**Row 2 (WS):** Purl.

**Row 3:** Knit.

**Rows 4 and 5:** Purl.

**Row 6:** Knit.

Rep rows 1–6 for reverse stockinette stitch stripe.



## Seed Stitch

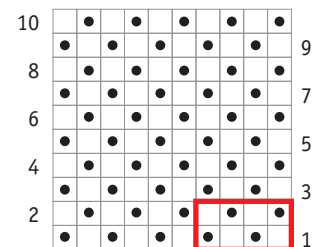
Seed stitch creates a nice bumpy-textured fabric that lies flat and looks the same on both sides. You knit the purl stitches and purl the knit stitches.

Cast on an even number of sts.

**Row 1 (RS):** \*K1, p1; rep from \* to end.

**Row 2 (WS):** \*P1, k1; rep from \* to end.

Rep rows 1 and 2 for seed stitch.





## Double Seed Stitch

Double seed stitch, sometimes called moss stitch, is a four-row version of seed stitch.

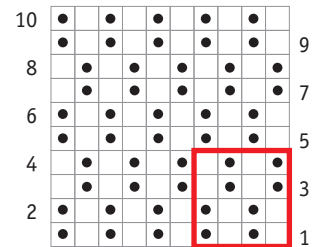
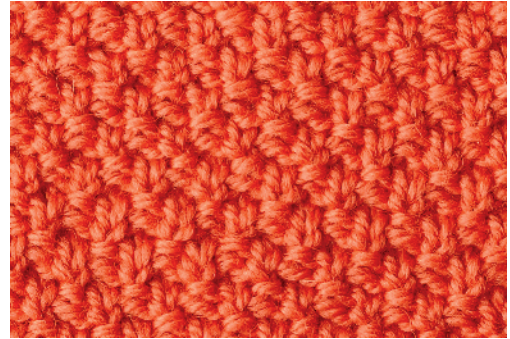
Cast on an even number of sts.

**Row 1 (RS):** \*K1, p1; rep from \* to end.

**Row 2 (WS):** Rep row 1.

**Rows 3 and 4:** \*P1, k1; rep from \* to end.

Rep rows 1–4 for double seed stitch.



## Simple Seed Stitch

Simple seed stitch is a good all-over pattern for sweaters, vests, and dresses.

Cast on a multiple of 4 sts plus 1.

**Row 1 (RS):** P1, \*k3, p1; rep from \* to end.

**Row 2 and all even-numbered rows (WS):** Purl.

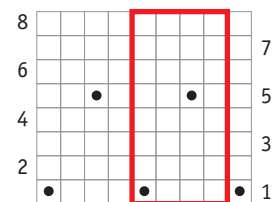
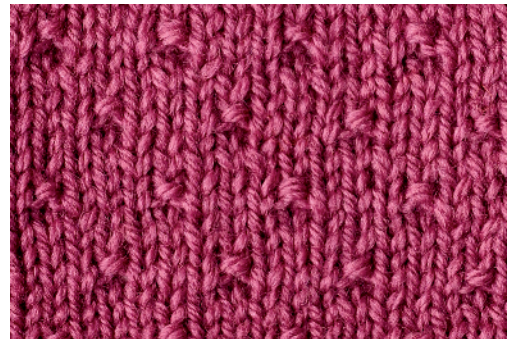
**Row 3:** Knit.

**Row 5:** K2, p1, \*k3, p1; rep from \* to last 2 sts, k2.

**Row 7:** Knit.

**Row 8:** Purl.

Rep rows 1–8 for simple seed stitch.



## Box Stitch

Box stitch looks the same on both sides and lies flat.

Cast on a multiple of 4 sts plus 2.

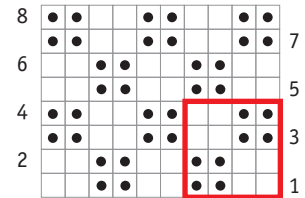
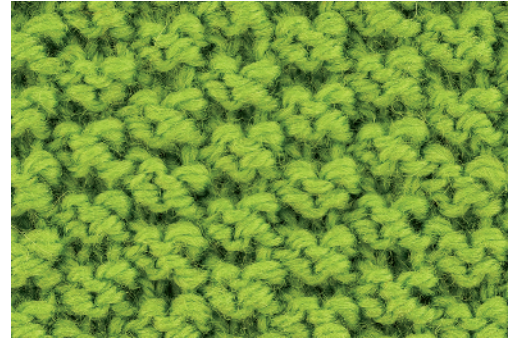
**Row 1 (RS):** K2, \*p2, k2; rep from \* to end.

**Row 2 (WS):** P2, \*k2, p2; rep from \* to end.

**Row 3:** Rep row 2.

**Row 4:** Rep row 1.

Rep rows 1–4 for box stitch.



## Andalusian Stitch

This stitch, which creates a nice grid pattern, is easy to do.

Cast on a multiple of 2 sts plus 1.

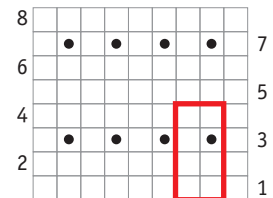
**Row 1 (RS):** Knit.

**Row 2 (WS):** Purl.

**Row 3:** \*K1, p1; rep from \* to last st, k1.

**Row 4:** Purl.

Rep rows 1–4 for Andalusian stitch.



## Checkerboard

This pattern looks the same on both sides, so it's great for blankets, scarves, and wraps.

Cast on a multiple of 8 sts plus 4.

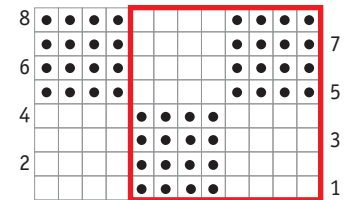
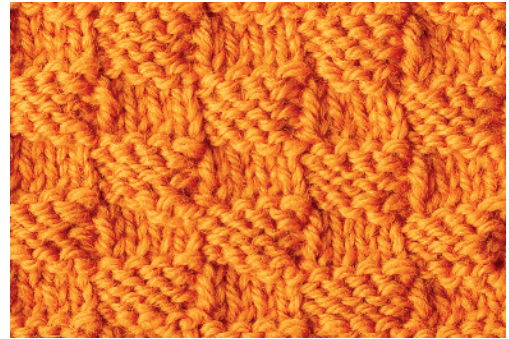
**Rows 1 and 3 (RS):** K4, \*p4, k4; rep from \* to end.

**Rows 2 and 4 (WS):** P4, \*k4, p4; rep from \* to end.

**Rows 5 and 7:** Rep row 2.

**Rows 6 and 8:** Rep row 1.

Rep rows 1–8 for checkerboard pattern.



## Rice Stitch

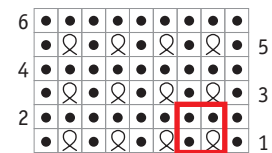
This easy all-over pattern lies flat and looks like ribbing on the wrong side.

Cast on a multiple of 2 sts plus 1.

**Row 1 (RS):** P1, \*k1 tbl, p1; rep from \* to end.

**Row 2 (WS):** Knit.

Rep rows 1 and 2 for rice stitch.







## Diamond Brocade

This is an elegant allover pattern.

Cast on a multiple of 8 sts plus 1.

**Row 1 (RS):** K4, \*p1, k7; rep from \* to last 5 sts, p1, k4.

**Rows 2 and 8 (WS):** P3, \*k1, p1, k1, p5; rep from \* to last 6 sts, k1, p1, k1, p3.

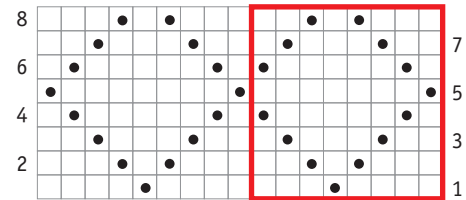
**Rows 3 and 7:** K2, \*p1, k3; rep from \* to last 3 sts, p1, k2.

**Rows 4 and 6:** P1, \*k1, p5, k1, p1; rep from \* to end.

**Row 5:** \*P1, k7; rep from \* to last st, p1.

**Row 8:** P3, \*k1, p1, k1, p5; rep from \* to last 6 sts, k1, p1, k1, p3.

Rep rows 1–8 for diamond brocade.



## Diamonds in Columns

You can repeat any motif in a series of panels. This one works well on sweaters, vests, and pillows.

Cast on a multiple of 8 sts plus 1.

**Row 1 (RS):** Knit.

**Row 2 (WS):** K1, \*p7, k1; rep from \* to end.

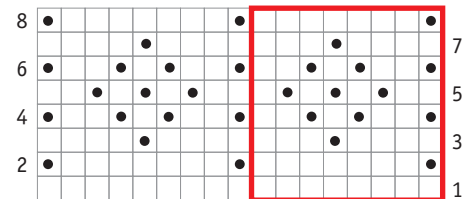
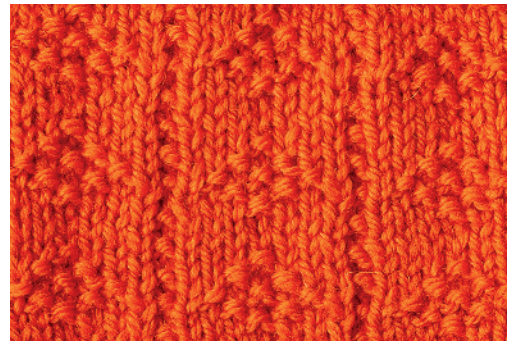
**Rows 3 and 7:** K4, \*p1, k7; rep from \* to last 5 sts, p1, k4.

**Rows 4 and 6:** K1, \*p2, k1, p1, k1, p2, k1; rep from \* to end.

**Row 5:** K2, \*[p1, k1] twice, p1, k3; rep from \* to last 7 sts, [p1, k1] twice, p1, k2.

**Row 8:** K1, \*p7, k1; rep from \* to end.

Rep rows 1–8 for diamonds in columns.









## Little Windows

A simple arrangement of knit and purl stitches creates these stockinette stitch “windows” on a reverse stockinette stitch background.

Cast on a multiple of 10 sts plus 1.

**Rows 1 and 5 (RS):** Purl.

**Rows 2 and 4:** K4, \*p3, k7; rep from \*, ending last rep with k4.

**Row 3:** P4, \*k3, p7; rep from \*, ending last rep with p4.

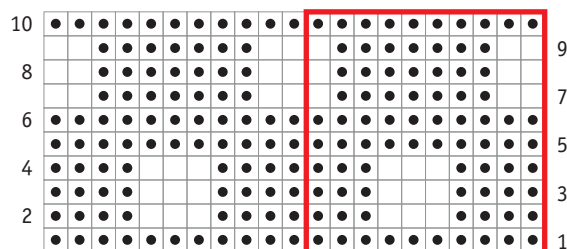
**Row 6:** Knit.

**Rows 7 and 9:** K2, \*p7, k3; rep from \*, ending last rep with k2.

**Row 8:** P2, \*k7, p3; rep from \*, ending last rep with p2.

**Row 10:** Knit.

Rep rows 1–10 for little windows.



## Reversible Diamonds

This big and bold pattern works wonderfully when both sides of the knitted piece are showing. Either side can be the “right side.” Play with the scale of the pattern by working reversible diamonds in a bulky or super-bulky yarn.

Cast on a multiple of 12 sts plus 1.

**Row 1 (RS):** K5, \*p3, k9; rep from \*, ending last rep k5.

**Row 2:** P5, \*k3, p9; rep from \*, ending last rep k5.

**Row 3:** K4, \*p5, k7; rep from \*, ending last rep k4.

**Row 4:** P4, \*k5, p7; rep from \*, ending last rep k4.

**Row 5:** K3, \*p3, k1, p3, k5; rep from \*, ending last rep k3.

**Row 6:** P3, \*k3, p1, k3, p5; rep from \*, ending last rep p3.

**Row 7:** K2, \*p3, k3; rep from \*, ending last rep k2.

**Row 8:** P2, \*k3, p3; rep from \*, ending last rep p2.



**Row 9:** K1, \*p3, k5, p3, k1; rep from \* to end.

**Row 10:** P1, \*k3, p5, k3, p1; rep from \* to end.

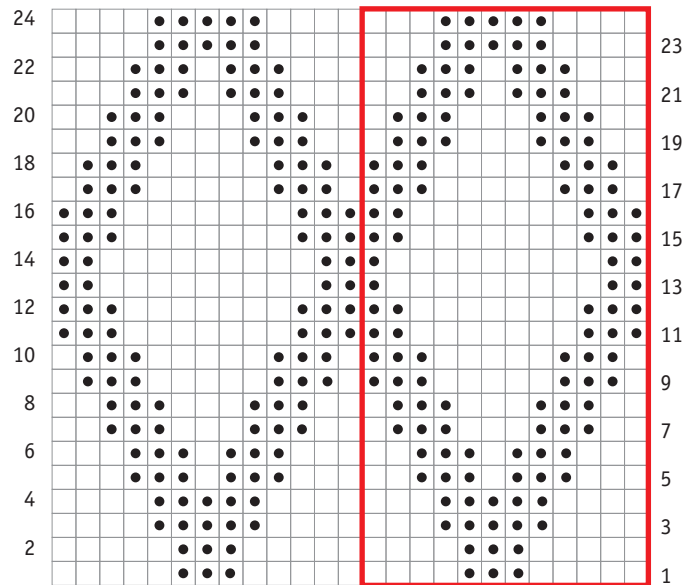
**Row 11:** P3, \*k7, p5; rep from \*, ending last rep p3.

**Row 12:** K3, \*p7, k5; rep from \*, ending last rep k3.

**Row 13:** P2, \*k9, p3; rep from \*, ending last rep p2.

**Row 14:** K2, \*p9, k3; rep from \*, ending last rep k2.

Rep rows 1–14 for reversible diamonds.







# Big Basketweave

The push and pull of the horizontals and verticals in this pattern create a fluid, wavy weave. Let the pattern do what it does naturally, or block for a less curvy look.

Cast on a multiple of 18 sts plus 10.

**Rows 1 and 5 (RS):** \*K11, p2, k2, p2, k1; rep from \*, ending with k10.

**Rows 2 and 6:** P1, k8, p1, \*p1, [k2, p2] twice, k8, p1; rep from \* to end.

**Rows 3 and 7:** \*K1, p8, [k2, p2] twice, k1; rep from \*, ending last rep k1, p8, k1.

**Rows 4 and 8:** P10, \*p1, k2, p2, k2, p11; rep from \* to end.

**Row 9:** Knit.

**Rows 10 and 14:** [P2, k2] twice, p2, \*p10, [k2, p2] twice; rep from \* to end.

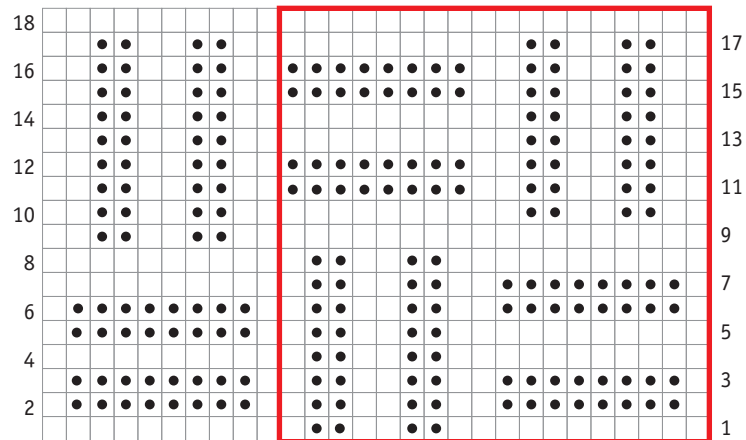
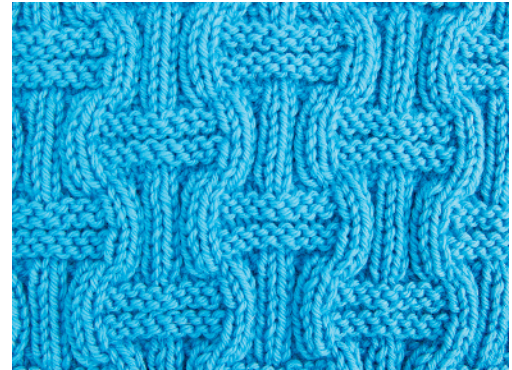
**Rows 11 and 15:** \*[K2, p2] twice, k2, p8; rep from \*, ending [k2, p2] twice, k2.

**Rows 12 and 16:** [P2, k2] twice, p2, \*k8, [p2, k2] twice, p2; rep from \* to end.

**Rows 13 and 17:** \*[K2, p2] twice, k10; rep from \*, ending [k2, p2] twice, k2.

**Row 18:** Purl.

Rep rows 1–18 for big basketweave.



## Tumbling Blocks

This is a knit version of the well-known quilt pattern. This pattern begins with wrong side row.

Cast on a multiple of 10 sts.

**Row 1 (WS):** \*P1, k1] 5 times; rep from \* to end.

**Row 2:** \*P2, [k1, p1] 3 times, k2; rep from \* to end.

**Row 3:** \*P3, [k1, p1] twice, k3; rep from \* to end.

**Row 4:** \*P4, k1, p1, k4; rep from \* end.

**Row 5:** \*P5, k5; rep from \* to end.

**Row 6:** \*P5, k5; rep from \* to end.

**Row 7:** \*K1, p4, k1, p1; rep from \* to end.

**Row 8:** \*P1, k1, p3, k3, p1, k1; rep from \* to end.

**Row 9:** \*K1, p1, k1, p2, k2, p1, k1, p1; rep from \* to end.

**Row 10:** \*P1, k1] 5 times; rep from \* to end.

**Row 11:** \*[K1, p1] 5 times; rep from \* to end.

**Row 12:** \*P1, k1] twice, k1, p2, k1, p1, k1; rep from \* to end.

**Row 13:** \*K1, p1, k3, p3, k1, p1; rep from \* to end.

**Row 14:** \*P1, k4, p4, k1; rep from \* to end.

**Row 15:** \*K5, p5; rep from \* to end.

**Row 16:** \*K5, p5; rep from \* to end.

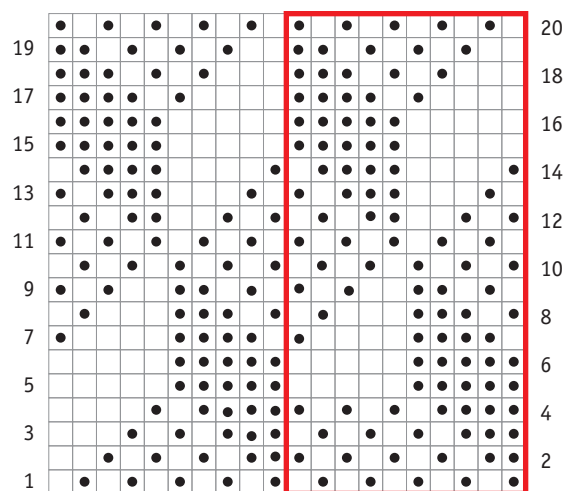
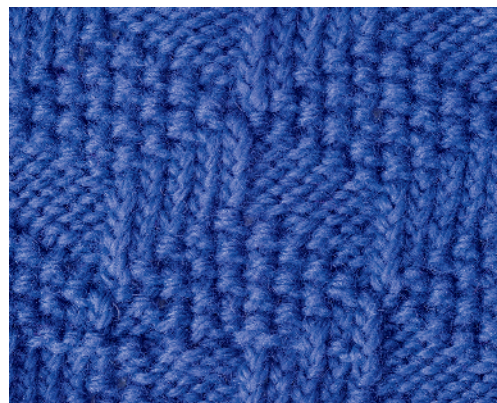
**Row 17:** \*K4, p1, k1, p4; rep from \* to end.

**Row 18:** \*K3, [p1, k1] twice, p3; rep from \* to end.

**Row 19:** \*K2, [p1, k1] 3 times, p2; rep from \* to end.

**Row 20:** \*[K1, p1] 5 times; rep from \* to end.

Rep rows 1–20 for tumbling blocks.



## Ruching I

You need two sets of needles for ruching: one suited to your yarn's thickness and a second pair that is one or two sizes larger. A fine, delicate yarn complements this pattern superbly. Start with the smaller needles and the number of stitches required for your desired width. Your stitch count will nearly double for rows 7–14.

Cast on any number of sts.

**Rows 1, 3, and 5 (RS):** Knit.

**Rows 2, 4, and 6:** Purl.





**Row 7:** Change to larger needles. K1, \*kfb; rep from \* to last st, k1.

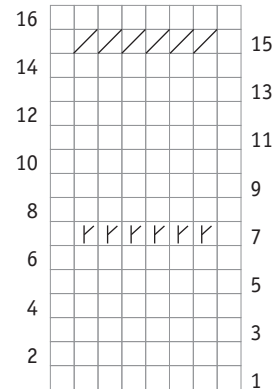
**Rows 8, 10, 12, and 14:** Purl.

**Rows 9, 11, and 13:** Knit.

**Row 15:** Change back to smaller needles. K1, \*k2tog; rep from \* to last st, k1.

**Row 16:** Purl.

Rep rows 1–16 for ruching I.



## Ruching II

You need two pairs of needles, one suited to your yarn's thickness and one smaller pair. This version begins with the puckered band, creating a ruffle. Begin with the larger needles and cast on twice the number of stitches you need for your final width.

Cast on an even number of sts.

**Rows 1, 3, and 5 (RS):** Knit.

**Rows 2, 4, and 6:** Purl.

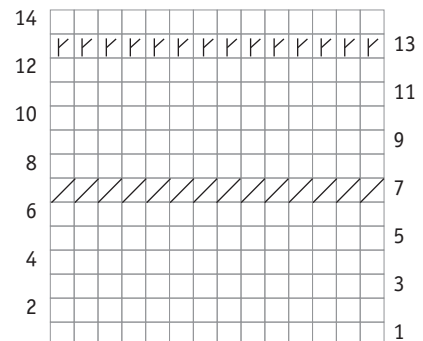
**Row 7:** Change to smaller needles. \*K2tog; rep from \* to end. You'll have half the number of sts you began with.

**Rows 8–12:** Knit.

**Row 13:** Change to larger needles. \*Kfb; rep from \* to end. You'll have the number of sts you began with.

**Row 14:** Purl.

Rep rows 1–14 for ruching II.



## Spirals

Alternating a double increase with a double decrease makes these spiraling cable look-alikes.

Cast on a multiple of 5 sts plus 4.

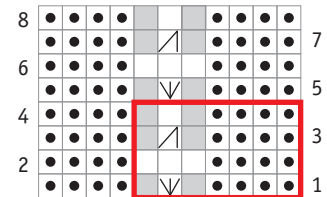
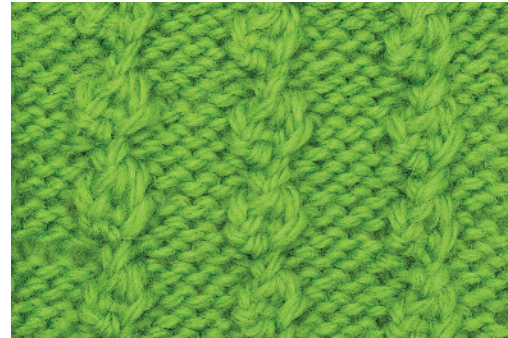
**Row 1 (RS):** \*P4, knit into front, back, and front of next st; rep from \* to last 4 sts, p4.

**Row 2:** K4, \*p3, k4; rep from \* to end.

**Row 3:** \*P4, k3tog; rep from \* to last 4 sts, p4.

**Row 4:** K4, \*p1, k4; rep from \* to end.

Rep rows 1–4 for spirals.



## Diagonal Weave

This big pattern looks like ribbons threaded in and out of the background fabric. It's reversible, too.

Cast on a multiple of 16 sts.

**Rows 1 and 3 (RS):** \*K5, p11; rep from \* to end.

**Row 2:** \*K11, p5; rep from \* to end.

**Rows 4 and 6:** Purl.

**Row 5:** Knit.

**Rows 7 and 9:** \*P4, k5, p7; rep from \* to end.

**Row 8:** \*K7, p5, k4; rep from \* to end.

**Rows 10 and 12:** Purl.

**Row 11:** Knit.

**Rows 13 and 15:** \*P8, k5, p3; rep from \* to end.

**Row 14:** \*K3, p5, k8; rep from \* to end.



**Rows 16 and 18:** Purl.

**Rows 17:** Knit.

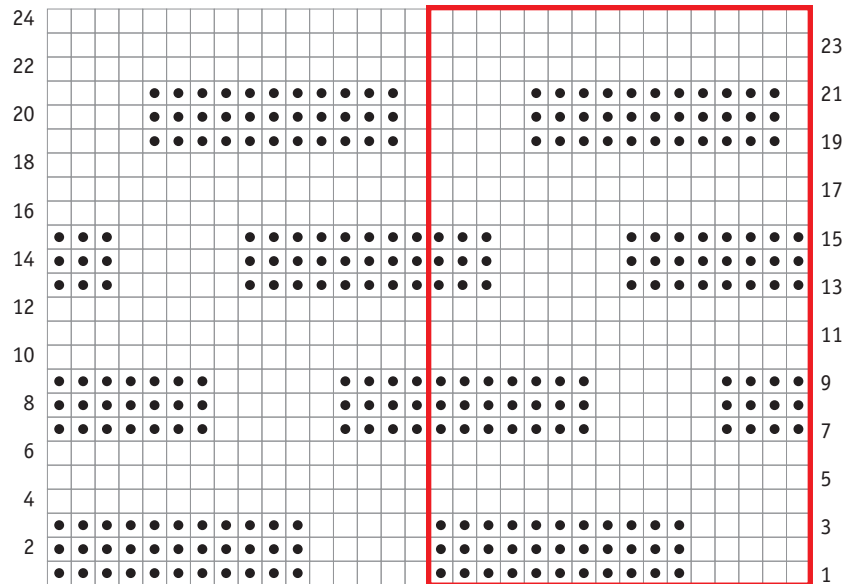
**Rows 19 and 20:** \*K1, p11, k4;  
rep from \* to end.

**Row 20:** P4, \*k11, p1; rep from \*  
to end.

**Rows 22 and 24:** Purl.

**Row 23:** Knit.

Rep rows 1–24 for diagonal weave.



## Star Panel

This simple star, a 17-stitch panel, made up of thin lines of purl stitches is lovely centered in cardigan fronts or as a repeating motif on a baby blanket or throw. This pattern begins with a wrong side row.

To use as a single panel, you'll need 17 sts. As a repeating pattern, cast on a multiple of 16 sts plus 1.

**Row 1 (WS):** K1, p15, k1.

**Rows 2, 4, and 18 (RS):** Knit.

**Rows 3 and 19:** K1, [p7, k1] twice.

**Rows 5 and 17:** K1, p1, [k1, p5, k1] twice, p1, k1.

**Rows 6 and 16:** K3, p1, k9, p1, k3.

**Rows 7 and 15:** K1, p3, k1, [p3, k1] twice, p3, k1.

**Rows 8 and 14:** [K5, p1] twice, k5.

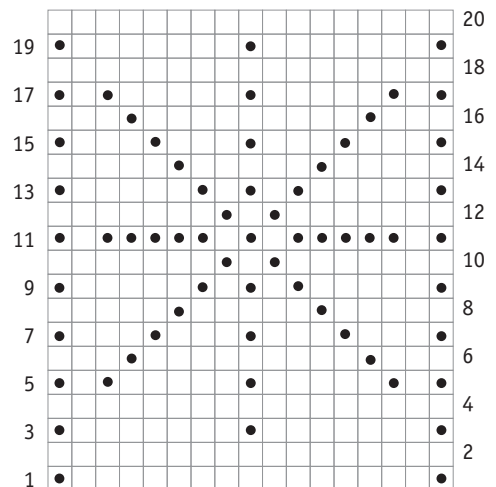
**Rows 9 and 13:** K1, p5, [k1, p1] twice, k1, p5, k1.

**Rows 10 and 12:** K7, p1, k1, p1, k7.

**Row 11:** K1, p1, k5, p1, k1, p1, k5, p1, k1.

**Row 20:** Knit.

Rep rows 1–20 for star panel.



## Ribbed Diamonds

This pattern is reversible, so it's great for items where both sides must be seen.

Cast on a multiple of 14 sts plus 1.

**Row 1 (RS):** \*K2, [p1, k1] 6 times; rep from \* to last st, k1.

**Row 2 and all even-numbered rows (WS):** Knit the knit sts and purl the purl sts.

**Row 3:** \*K4, [p1, k1] 4 times, k2; rep from \* to last st, k1.

**Row 5:** \*K6, [p1, k1] 2 times, k4; rep from \* to last st, k1.

**Row 7:** \*K1, p1, k4, p1, k1, p1, k4, p1; rep from \* to last st, k1.

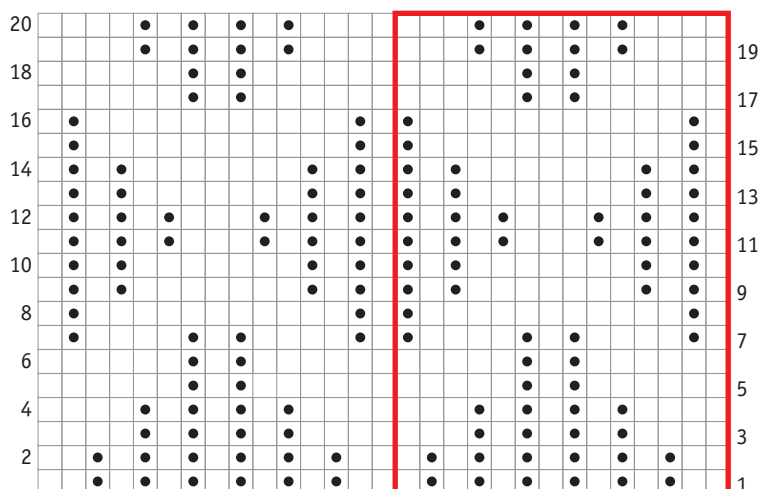
**Row 9:** \*[K1, p1] twice, k7, p1, k1, p1; rep from \* to last st, k1.

**Row 11:** \*[K1, p1] 3 times, k3, [p1, k1] twice, p1; rep from \* to last st, k1.

**Rows 13, 15, 17, and 19:** Rep rows 9, 7, 5, and 3, respectively.

**Row 20:** Rep row 2.

Rep rows 1–20 for ribbed diamonds.



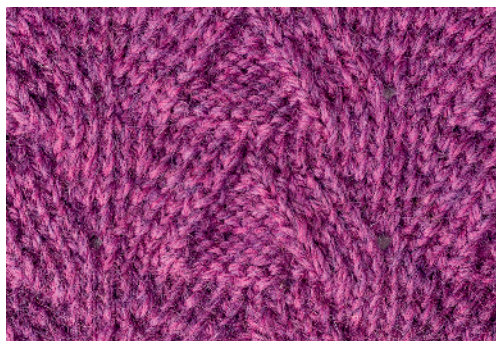
## Teepees

Here's an all-over pattern that's perfect for throws, wraps, skirts, and other feminine items.

Cast on a multiple of 16 sts.

**Row 1 (RS):** Knit.

**Row 2:** \*K4, p8, k4; rep from \* to end.





**Row 3:** \*P3, k2tog, k3, with left needle, pick up from the back the horizontal strand between last st worked and first st on left needle, and knit into the back and then the front of the picked-up strand, k3, ssk, p3; rep from \* to end.

**Row 4:** \*K3, p10, k3; rep from \* to end.

**Row 5:** \*P2, k2tog, k3, m1, k2, m1, k3, ssk, p2; rep from \* to end.

**Row 6:** \*K2, p12, k2; rep from \* to end.

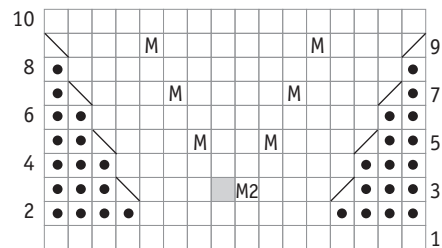
**Row 7:** \*P1, k2tog, k3, m1, k4, m1, k3, ssk, p1; rep from \* to end.

**Row 8:** \*K1, p14, k1; rep from \* to end.

**Row 9:** \*K2tog, k3, m1, k6, m1, k3, ssk; rep from \* to end.

**Row 10:** Purl.

Rep rows 1–10 for teepees.



## Tic-Tac-Toe

Easy to work and not just for kids, the tic-tac-toe pattern has a unique and playful appeal.

Cast on a multiple of 12 sts plus 3.

**Rows 1, 3, 9, and 11 (RS):** Knit.

**Rows 2, 4, 8, and 10 (WS):** Purl.

**Rows 5 and 7:** \*K3, p1, k1, p1, k3, p3; rep from \* to last 3 sts, k3.

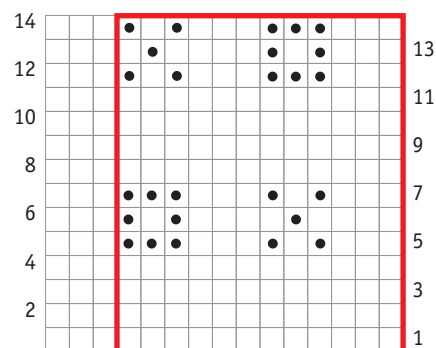
**Row 6:** P3, \*k1, p1, k1, p4, k1, p4; rep from \* to end.

**Row 12:** P3, \*k1, p1, k1, p3, k3, p3; rep from \* to end.

**Row 13:** K3, \*p1, k1, p1, k4, p1, k4; rep from \* to end.

**Row 14:** Rep row 12.

Rep rows 1–14 for tic-tac-toe.





## Manhole Cover

Use this playful pattern for scarves, sweaters, bags, or baby blankets.

Cast on a multiple of 8 sts plus 2.

**Row 1 (RS):** \*K2, p3, k2, p1; rep from \* to last 2 sts, k2.

**Row 2 (WS):** P1, \*k3, p2, k1, p2; rep from \* to last st, k1.

**Row 3:** P2, \*k5, p3; rep from \* to end.

**Row 4:** K2, \*p5, k3; rep from \* to end.

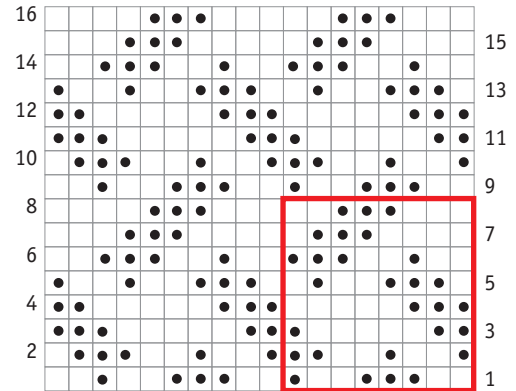
**Row 5:** K1, \*p3, k2, p1, k2; rep from \* to last st, p1.

**Row 6:** P2, \*k3, p2, k1, p2; rep from \* to end.

**Row 7:** K4, p3, \*k5, p3; rep from \* to last 3 sts, k3.

**Row 8:** P4, k3, \*p5, k3; rep from \* to last 3 sts, p3.

Rep rows 1–8 for manhole cover.



# Terrazzo

This big and bold design is also beautiful in a stranded two-color pattern.

Cast on a multiple of 20 sts plus 1.

**Row 1 (RS):** Purl.

**Rows 2 and 16:** \*K1, [p2, k1] twice, p10, k1, p2; rep from \* to last st, k1.

**Rows 3, 17 and 19:** \*P1, k2, p1, k10, [p1, k2] twice; rep from \* to last st, p1.

**Row 4:** \*K7, p3, k4, p3, k3; rep from \* to last st, k1.

**Rows 5, 7 and 13:** \*P1, k6, p1, k2, p1, k6, p1, k2; rep from \* to last st, p1.

**Rows 6, 12 and 14:** \*K1, p2, k1, p6, k1, p2, k1, p6; rep from \* to last st, k1.

**Row 8:** \*K1, p2, k1, p2, k5, p2, k5, p2; rep from \* to last st, k1.

**Row 9:** \*P1, k2, p1, k4, p2, k4, p1, k2, p1, k2; rep from \* to last st, p1.

**Row 10:** \*K1, [p2, k1] twice, p4, k2, p4, k1, p2; rep from \* to last st, k1.

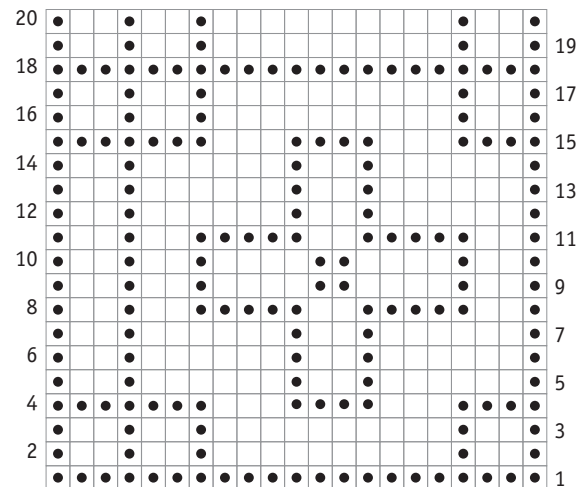
**Row 11:** \*P1, k2, p5, k2, p5, k2, p1, k2; rep from \* to last st, p1.

**Row 15:** \*[P4, k3] twice, p6; rep from \* to last st, p1.

**Row 18:** Knit.

**Row 20:** \*[K1, p2] twice, k1, p10, k1, p2; rep from \* to last st, k1.

Rep rows 1–20 for terrazzo.





# Chevrons

There are an infinite number of chevron patterns. This version is a classic.

Cast on a multiple of 8 sts plus 1.

**Row 1 (RS):** P1, \*k7, p1; rep from \* to end.

**Row 2:** K1, \*p7, k1; rep from \* to end.

**Rows 3 and 12:** P2, \*k5, p3; rep from \*, ending last rep k5, p2.

**Rows 4 and 11:** K2, \*p5, k3; rep from \*, ending last rep p5, k2.

**Rows 5 and 14:** P3, \*k3, p5; rep from \*, ending last rep k3, p3.

**Rows 6 and 13:** K3, \*p3, k5; rep from \*, ending last rep p3, k3.

**Row 7:** P4, \*k1, p7; rep from \*, ending last rep k1, p4.

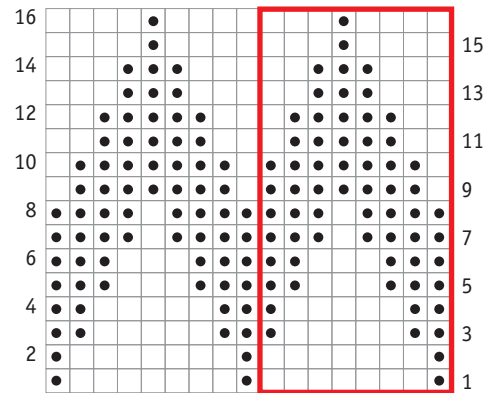
**Rows 8 and 15:** K4, \*p1, k7; rep from \*, ending last rep p1, k4.

**Row 9:** Rep row 2.

**Row 10:** Rep row 1.

**Row 16:** Rep row 7.

Rep rows 1–16 for chevrons.



## Framed Squares

This geometric pattern lends a modern feel to suits, bags, and skirts.

Cast on a multiple of 10 sts plus 2.

**Row 1 (RS):** Knit.

**Row 2:** Purl.

**Rows 3 and 11:** K2, \*p8, k2; rep from \* to end.

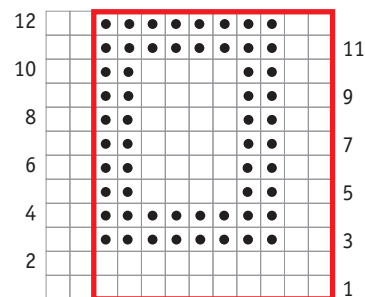
**Row 4:** P2, \*k8, p2; rep from \* to end.

**Rows 5, 7, and 9:** K2, \*p2, k4, p2, k2; rep from \* to end.

**Rows 6, 8, and 10:** P2, \*k2, p4, k2, p2; rep from \* to end.

**Row 12:** P2, \*k8, p2; rep from \* to end.

Rep rows 1–12 for framed squares.



## Mini Checks

This simple but pretty pattern is reminiscent of simple seed stitch.

Cast on a multiple of 8 sts.

**Rows 1 and 5 (RS):** Knit.

**Row 2:** \*P6, k2; rep from \* to end.

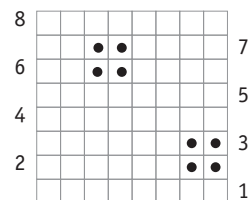
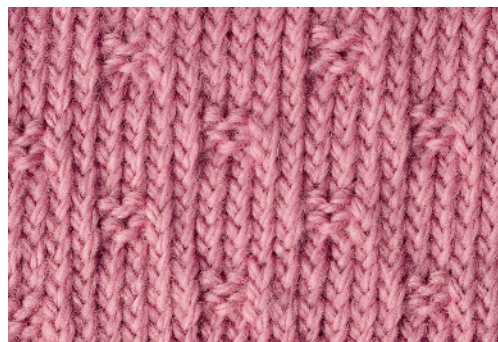
**Rows 3 and 7:** Knit the knit sts and purl the purl sts.

**Row 4:** Purl.

**Row 6:** P2, \*k2, p6; rep from \* to last 6 sts, k2, p4.

**Row 8:** Purl.

Rep rows 1–8 for mini checks.



## Ladder Stitch

Ladder stitch works wonderfully for blankets, jackets, pullovers, and much more. It's extra easy to work, yet distinctive in appearance.

Cast on a multiple of 8 sts plus 1.

**Rows 1 and 3 (RS):** \*K5, sl 3 pwise wyif; rep from \* to last st, k1.

**Row 2:** P1, \*sl 3 pwise wyib, p5; rep from \* to end.

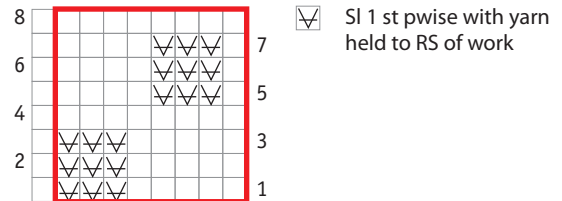
**Row 4:** Purl.

**Rows 5 and 7:** K1, \*sl 3 pwise wyif, k5; rep from \* to end.

**Row 6:** \*P5, sl 3 pwise wyib; rep from \* to last st, p1.

**Row 8:** Purl.

Rep rows 1–8 for ladder stitch.



## German Herringbone

This gorgeous pattern, with its many angles and textures, is worked over only six rows, so you'll know it by heart in no time.

Cast on a multiple of 15 sts plus 2.

**Row 1 (RS):** P2, \*m1, k3, p2, p3tog, p2, k3, m1, p2; rep from \* to end.

**Row 2:** \*K2, p4, k5, p4; rep from \* to last 2 sts, k2.

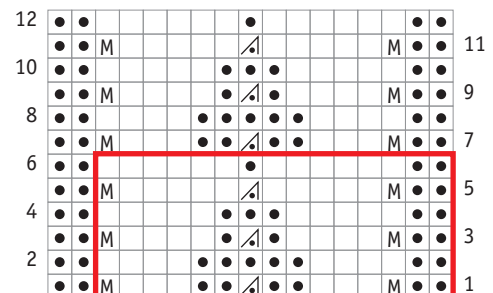
**Row 3:** P2, \*m1, k4, p1, p3tog, p1, k4, m1, p2; rep from \* to end.

**Row 4:** \*K2, p5, k3, p5; rep from \* to last 2 sts, k2.

**Row 5:** P2, \*m1, k5, p3tog, k5, m1, p2; rep from \* to end.

**Row 6:** \*K2, p6, k1, p6; rep from \* to last 2 sts, k2.

Rep rows 1–6 for German herringbone.



## Waffle Stitch

Waffle stitch can be used both as an allover pattern and as a ribbing.

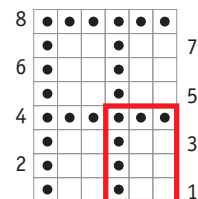
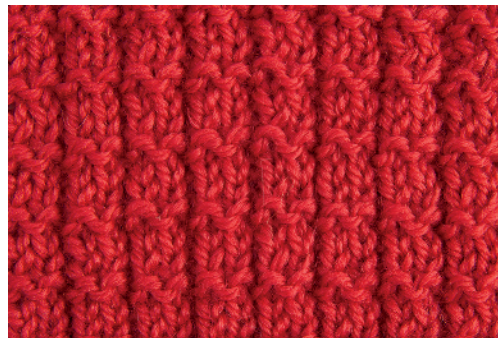
Cast on a multiple of 3 sts.

**Rows 1 and 3 (RS):** \*K2, p1; rep from \* to end.

**Row 2 (WS):** \*K1, p2; rep from \* to end.

**Row 4:** Knit.

Rep rows 1–4 for waffle stitch.



## Knit and Purl Plaid

This easy-to-work stitch pattern is perfect for cardigans and fall coats.

Cast on a multiple of 4 sts.

**Rows 1 and 2:** \*K2, p2; rep from \* to end.

**Row 3:** Knit.

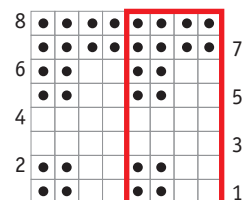
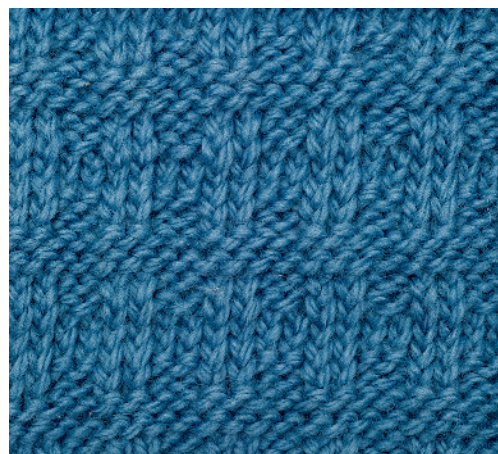
**Row 4:** Purl.

**Rows 5 and 6:** \*K2, p2; rep from \* to end.

**Row 7:** Purl.

**Row 8:** Knit.

Rep rows 1–8 for knit and purl plaid.







## Broken Diagonals

Broken diagonals is a 42-row repeat, so it's good for large or long knits, like throws, wraps, scarves, skirts, coats, and oversized pullovers.

Cast on a multiple of 14 sts.

**Row 1 (RS):** \*P3, k1, p1, k3, p3, k3; rep from \* to end.

**Row 2 (WS):** \*K1, p3, k3, [p1, k1] twice, p1, k2; rep from \* to end.

**Row 3:** \*P1, k3, p1, k1, p3, k3, p2; rep from \* to end.

**Row 4:** \*K3, p3, k1, p1, k3, p3; rep from \* to end.

**Row 5:** \*K2, p3, [k1, p1] twice, k1, p3, k1; rep from \* to end.

**Row 6:** \*P2, k3, p1, k1, p3, k3, p1; rep from \* to end.

**Row 7:** \*P3, k3, p3, k1, p1, k3; rep from \* to end.

**Row 8:** \*[K1, p1] 3 times, k3, p3, k2; rep from \* to end.

**Row 9:** \*P1, k3, p3, k3, p1, k1, p2; rep from \* to end.

**Row 10:** \*K1, p1, [k3, p3] twice; rep from \* to end.

**Row 11:** \*P1, k1, p3, k3, p3, k1, p1, k1; rep from \* to end.

**Row 12:** \*K1, [p3, k3] twice, p1; rep from \* to end.

**Row 13:** \*P1, k1, p1, k3, p3, k3, p2; rep from \* to end.

**Row 14:** \*K3, p3, k3, [p1, k1] twice, p1; rep from \* to end.

**Row 15:** \*K2, p1, k1, p3, k3, p3, k1; rep from \* to end.

**Row 16:** \*P2, k3, p3, k1, p1, k3, p1; rep from \* to end.

**Row 17:** \*P3, [k1, p1] twice, k1, p3, k3; rep from \* to end.

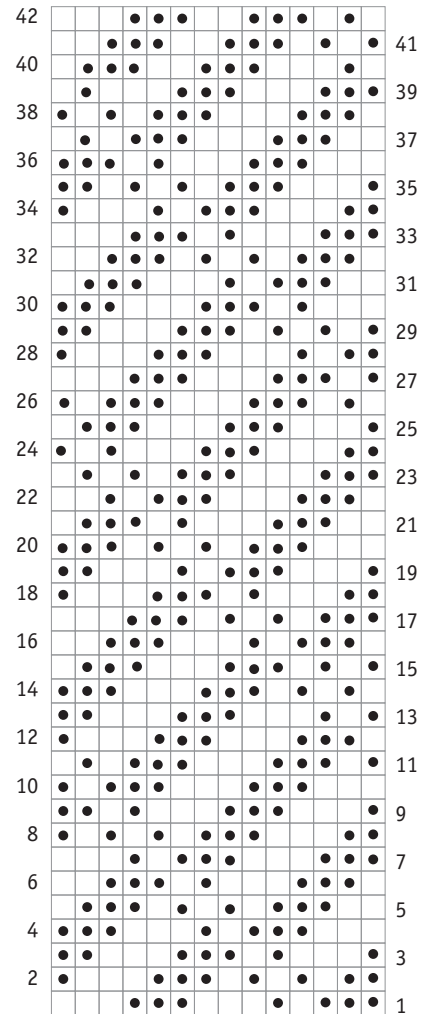
**Row 18:** \*K1, p3, k3, p1, k1, p3, k2; rep from \* to end.

**Row 19:** \*P1, k3, p3, k1, p1, k3, p2; rep from \* to end.



- Row 20:** \*K3, [p1, k1] twice, p1, k3, p3; rep from \* to end.
- Row 21:** \*K2, p3, k3, p1, k1, p3, k1; rep from \* to end.
- Row 22:** \*P2, k1, p1, k3, p3, k3, p1; rep from \* to end.
- Row 23:** \*P3, k3, p3, [k1, p1] twice, k1; rep from \* to end.
- Row 24:** \*K1, p1, k1, p3, k3, p3, k2; rep from \* to end.
- Row 25:** \*P1, [k3, p3] twice, k1; rep from \* to end.
- Row 26:** \*K1, p1, k3, p3, k3, p1, k1, p1; rep from \* to end.
- Row 27:** \*P1, k1, [p3, k3] twice; rep from \* to end.
- Row 28:** \*K1, p3, k3, p3, k1, p1, k2; rep from \* to end.
- Row 29:** \*[P1, k1] 3 times, p3, k3, p2; rep from \* to end.
- Row 30:** \*K3, p3, k3, p1, k1, p3; rep from \* to end.
- Row 31:** \*K2, p3, k1, p1, k3, p3, k1; rep from \* to end.
- Row 32:** \*P2, k3, [p1, k1] twice, p1, k3, p1; rep from \* to end.
- Row 33:** \*P3, k3, p1, k1, p3, k3; rep from \* to end.
- Row 34:** \*K1, p3, k1, p1, k3, p3, k2; rep from \* to end.
- Row 35:** \*P1, k3, p3, [k1, p1] twice, k1, p2; rep from \* to end.
- Row 36:** \*K3, p1, k1, p3, k3, p3; rep from \* to end.
- Row 37:** \*K2, p3, k3, p3, k1, p1, k1; rep from \* to end.
- Row 38:** \*[K1, p1] twice, k3, p3, k3, p1; rep from \* to end.
- Row 39:** \*[P3, k3] twice, p1, k1; rep from \* to end.
- Row 40:** \*[K3, p3] twice, k1, p1; rep from \* to end.
- Row 41:** \*[P1, k1] twice, p3, k3, p3, k1; rep from \* to end.
- Row 42:** \*P2, k3, p3, k3, p1, k1, p1; rep from \* to end.

Rep rows 1–42 for broken diagonals.



## Circles

This bold circular pattern with its modern style works wonderfully for fall jackets, cushion covers, straight skirts, and bright baby blankets. Circles is reversible, too. The chart shows circular motifs in reverse stockinette stitch, and the photo shows the reverse.

Cast on a multiple of 14 sts plus 1.

**Row 1 (WS):** \*P3, k9, p2; rep from \* to last st, p1.

**Row 2 (RS):** \*K2, p3, k5, p3, k1; rep from \* to last st, k1.

**Rows 3 and 13:** \*P1, k3, p7, k3; rep from \* to last st, p1.

**Rows 4 and 12:** \*P3, k9, p2; rep from \* to last st, p1.

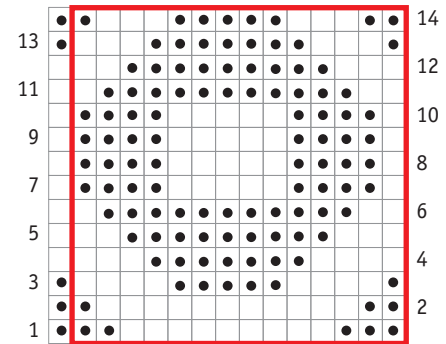
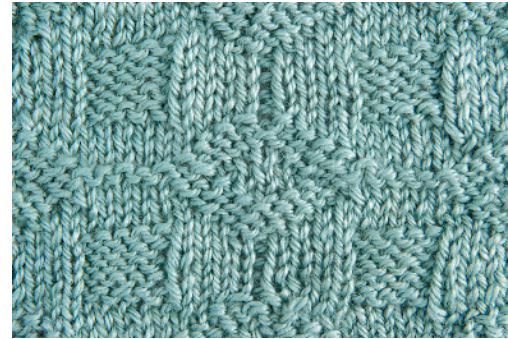
**Rows 5 and 11:** \*K2, p11, k1; rep from \* to last st, k1.

**Rows 6, 8, and 10:** \*P1, k4, p5, k4; rep from \* to last st, p1.

**Rows 7 and 9:** \*K1, p4, k5, p4; rep from \* to last st, k1.

**Row 14:** Rep row 2.

Rep rows 1–14 for circles; when finished lengthwise, complete the pattern with a row 1.



## Celtic Design

This pattern requires a bit more concentration, but the end result is worth it.

Cast on a multiple of 16 sts plus 1.

**Row 1 (RS):** \*[K1, p1] 3 times, [k2, p1] twice, [k1, p1] twice; rep from \* to last st, k1.

**Rows 2 and 8 (WS):** \*P2, k1, p1, k1, p7, [k1, p1] twice; rep from \* to last st, p1.

**Rows 3 and 7:** \*P1, k2, p1, k1, p1, [k2, p1] twice, k1, p1, k2; rep from \* to last st, p1.

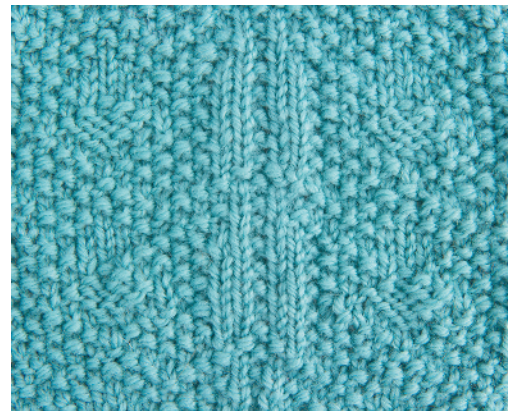
**Row 4:** \*K2, p2, k1, p7, k1, p2, k1; rep from \* to last st, k1.

**Row 5:** \*P3, [k2, p1] 3 times, k2, p2; rep from \* to last st, p1.

**Row 6:** \*K2, p2, k1, p7, k1, p2, k1; rep from \* to last st, k1.

**Row 9:** \*K3, p1, k1, p1, [k2, p1] twice, k1, p1, k2; rep from \* to last st, k1.

**Row 10:** \*P4, k1, p7, k1, p3; rep from \* to last st, p1.





**Row 11:** \* [K2, p1] 5 times, k1; rep from \* to last st, k1.

**Row 12:** \* [P1, k1] twice, p2, k1, p3, k1, p2, k1, p1, k1; rep from \* to last st, p1.

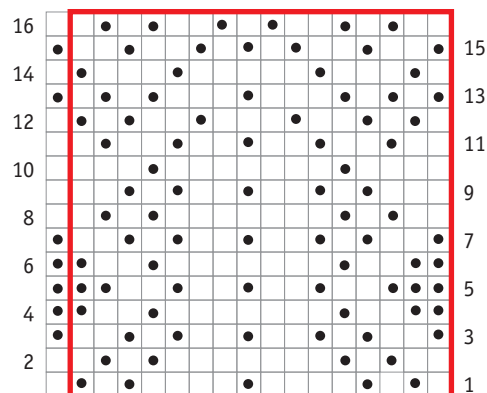
**Row 13:** \* [P1, k1] twice, [p1, k3] twice, [p1, k1] twice; rep from \* to last st, p1.

**Row 14:** \* P1, k1, p3, k1, p5, k1, p3, k1; rep from \* to last st, p1.

**Row 15:** \* [P1, k2] twice, [p1, k1] twice, [p1, k2] twice; rep from \* to last st, p1.

**Row 16:** \* [P2, k1, p1, k1] 3 times, p1; rep from \* to last st, p1.

Rep rows 1–16 for Celtic pattern; when finished lengthwise, complete the pattern with a row 1.



## Concentric Diamonds

This 16-stitch, 16-row repeat works well as a border or as an all-over pattern on pullovers, skirts, and scarves. Both sides are equally appealing.

Cast on a multiple of 16 sts plus 1.

**Rows 1, 7, and 11 (RS):** \* [K2, p1] 5 times, k1; rep from \*, ending last rep k2.

**Rows 2, 8, and 10 (WS):** P1, \* [k1, p2] twice, k1, p1; rep from \* to end.

**Rows 3, 9, and 15:** \* P1, [k2, p1] twice, k3, [p1, k2] twice; rep from \* to last st, p1.

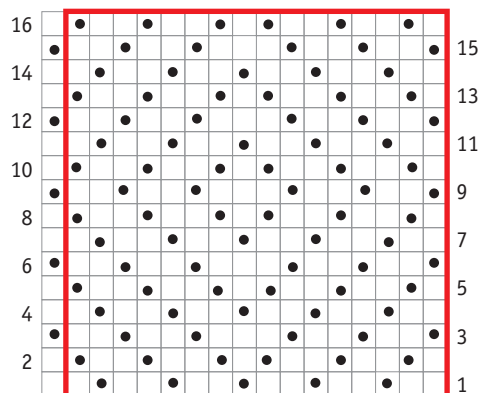
**Rows 4 and 14:** \* [P2, k1] 5 times, p1; rep from \*, ending last rep p2.

**Rows 5 and 13:** \* K1, [p1, k2] twice, p1; rep from \* to last st, k1.

**Rows 6 and 12:** \* K1, [p1, k2] twice, p1; rep from \* to last st, k1.

**Row 16:** Rep row 2.

Rep rows 1–16 for concentric diamonds; when finished lengthwise, complete the pattern with a row 1.







## Garlands

This design, with its fluid waves, opposes the usual geometric knit and purl patterns.

Cast on a multiple of 13 sts plus 4.

**Row 1 (RS):** P4, \*k9, p4; rep from \* to end.

**Row 2 (WS):** K6, \*p5, k8; rep from \* to last 11 sts, p5, k6.

**Row 3:** P7, \*k3, p10; rep from \* to last 10 sts, k3, p7.

**Row 4:** K8, \*p1, k12; rep from \* to last 9 sts, p1, k8.

**Row 5:** K4, \*p9, k4; rep from \* to end.

**Row 6:** P6, \*k5, p8; rep from \* to last 11 sts, k5, p6.

**Row 7:** K7, \*p3, k10; rep from \* to last 10 sts, p3, k7.

**Row 8:** P8, \*k1, p12; rep from \* to last 9 sts, k1, p8.

**Row 9:** Knit.

**Row 10:** Purl.

Rep rows 1–10 for garlands.

