
**Veterinary Technician's
Daily Reference Guide**
Canine and Feline

Third Edition

COPYRIGHTED MATERIAL

Section

One

Anatomy

Anatomy

Anatomy	6	Circulatory System	11
Overall	6	Nervous System	13
Musculature	8	Urogenital System	14
Skeletal	8	Eye	16
Internal Organs	9	Ear	16

Veterinary Technician's Daily Reference Guide: Canine and Feline, Third Edition. Edited by Candyce M. Jack and Patricia M. Watson with Consulting Editor Valissitie Heeren.
© 2014 John Wiley & Sons, Inc. Published 2014 by John Wiley & Sons, Inc.
Companion Website: www.wiley.com/go/jackvettechdailyref

ANATOMY

For a veterinary technician to be able to accurately complete many of his or her daily tasks, a clear understanding of the anatomy of the canine and feline body is needed. The following diagrams show the basic layout of the body systems, highlighting the areas of interest that are most commonly accessed in daily medicine practices ranging from the correctly positioned radiograph to a single-stick venipuncture.

Overall

See Skill Box 2.5, Regional Lymph Node Examination, page 35.

See Table 5.7, Directional Terms, page 256.

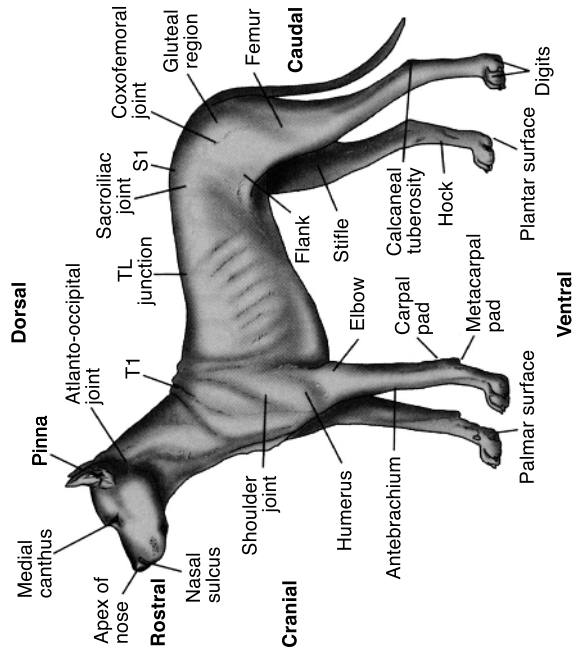


Figure 1.1 Overall anatomy.

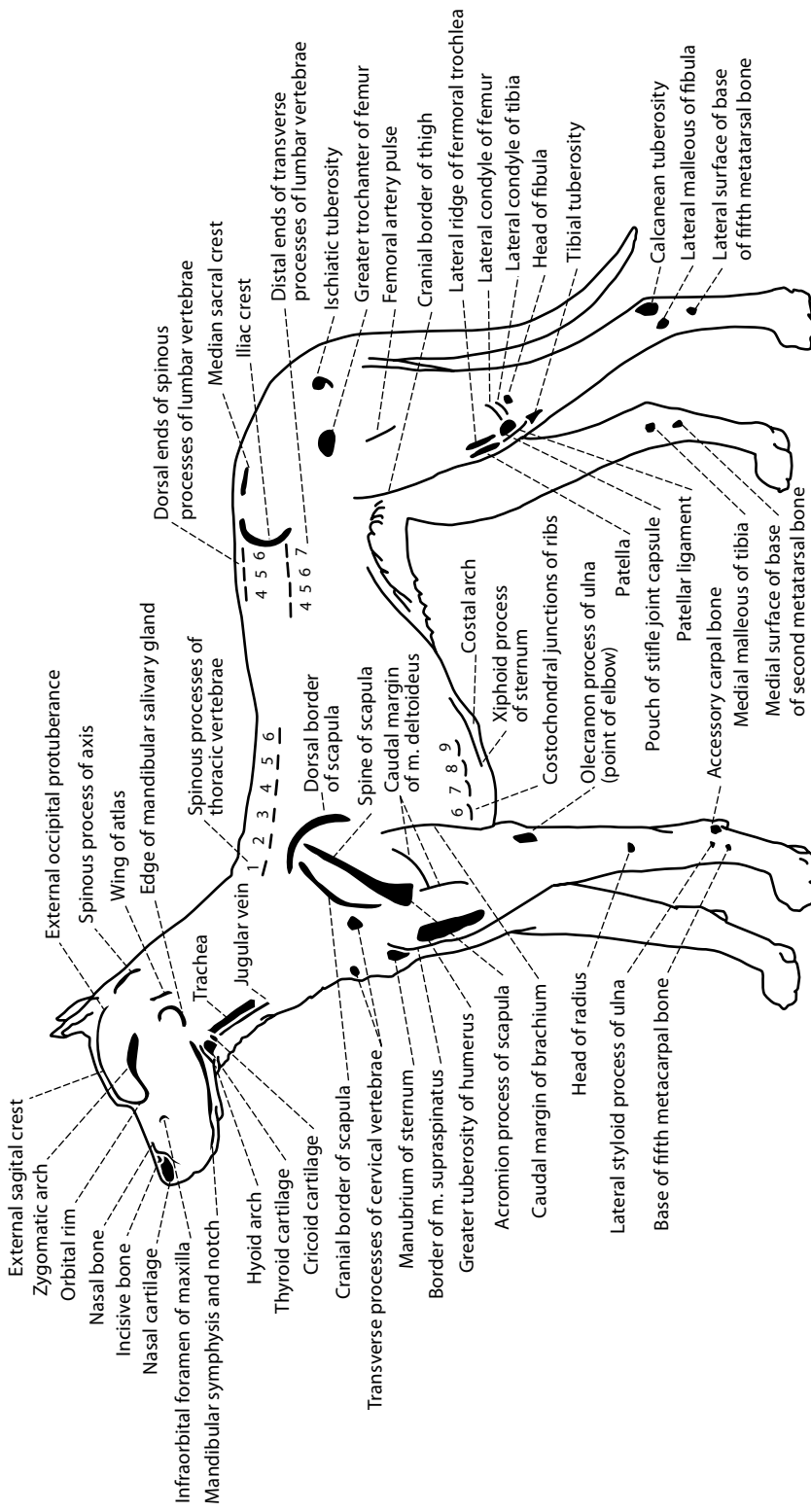


Figure 1.2 Palpation landmarks.

Skeletal

See Skill Box 2.7, Orthopedic Examination, page 39.

See Figure 13.1, Figure 13.2, Figure 13.3, and Figure 13.4, pages 689–691.

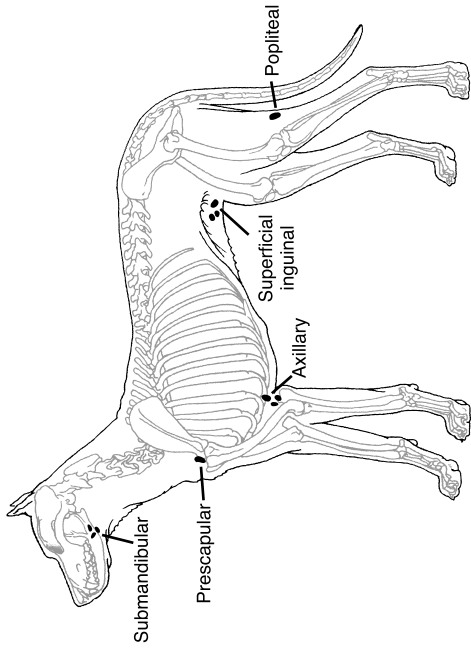


Figure 1.3 Regional lymph nodes.

Musculature

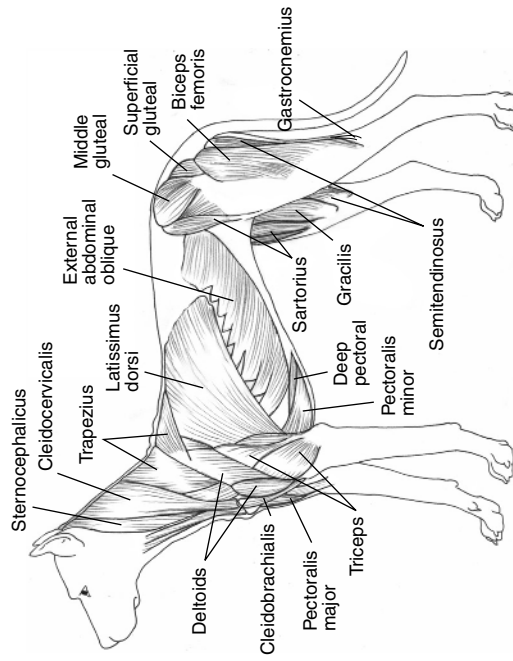


Figure 1.4 Musculature: lateral view.

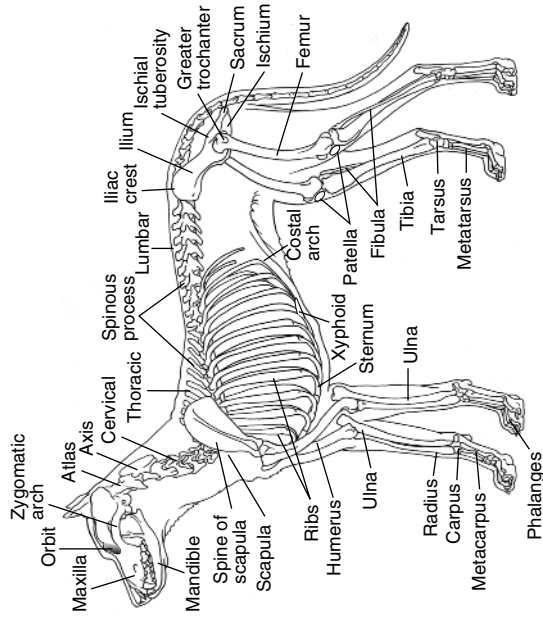


Figure 1.5 Skeletal: lateral view.

Internal Organs

See Skill Box 2.3, Abdominal Examination, page 34.
See Figure 12.2, Endotracheal intubation, page 634.

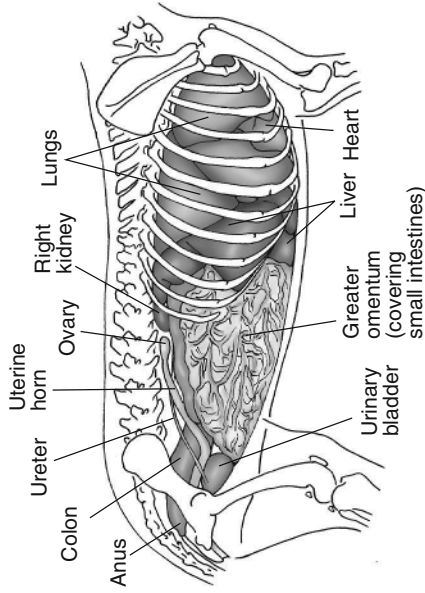


Figure 1.7 Internal organs: left lateral view. For color detail, see color plate section, CP-1.

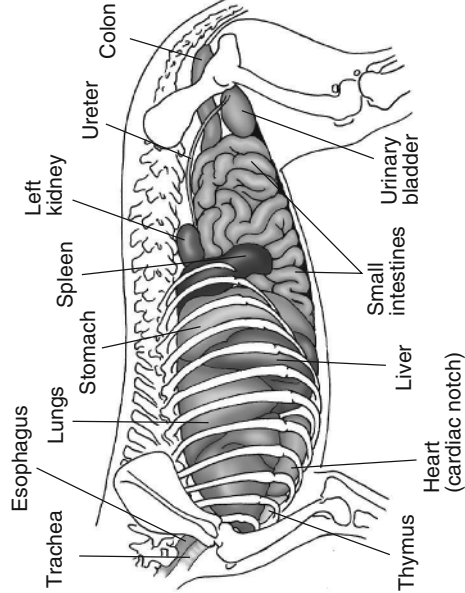


Figure 1.8 Internal organs: right lateral view. For color detail, see color plate section, CP-1.

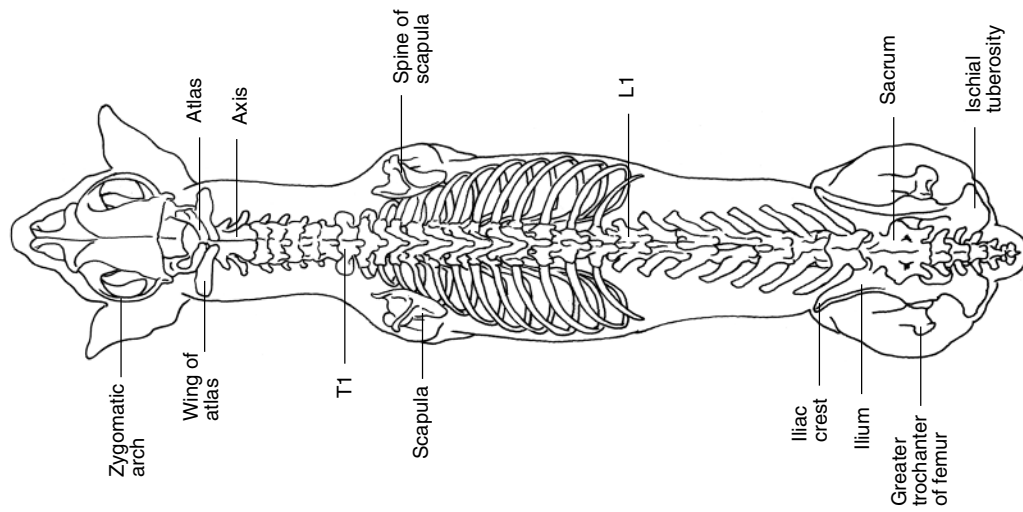


Figure 1.6 Skeletal: dorsal view.

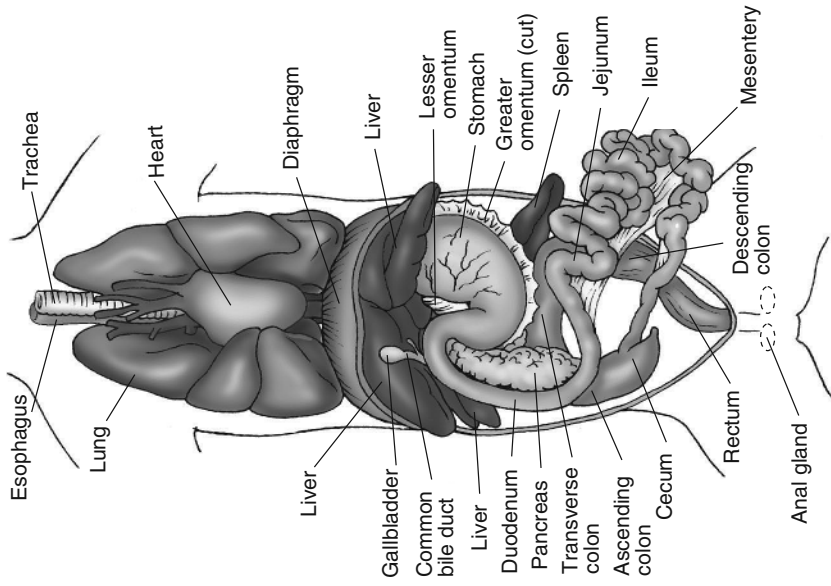


Figure 1.9 Internal organs: ventral view. For color detail, see color plate section, CP-1.

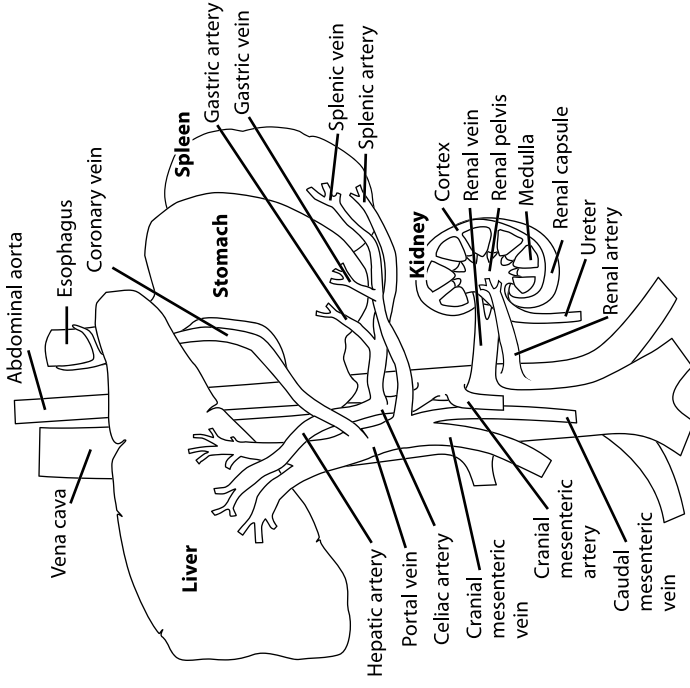


Figure 1.10 Internal organs: liver and kidney.

Circulatory System

See Skill Box 2.1, Cardiac Examination, page 31.

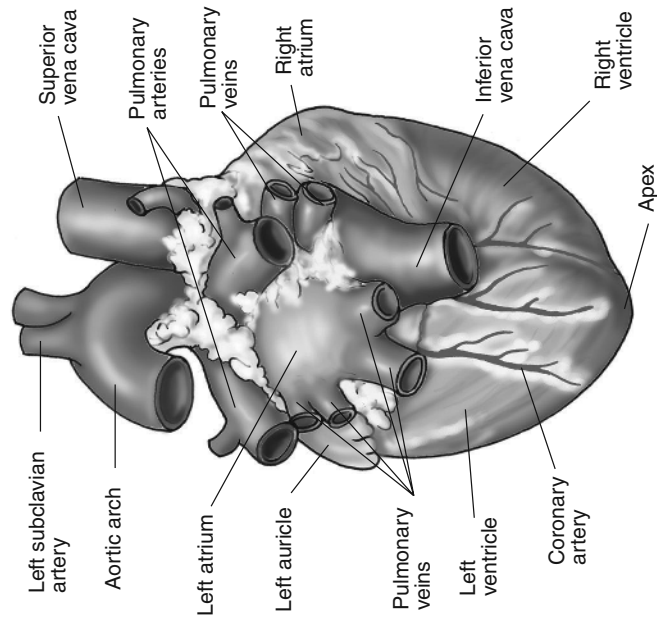


Figure 1.11 Circulatory: dorsal view of the heart. For color detail, see color plate section, CP-2.

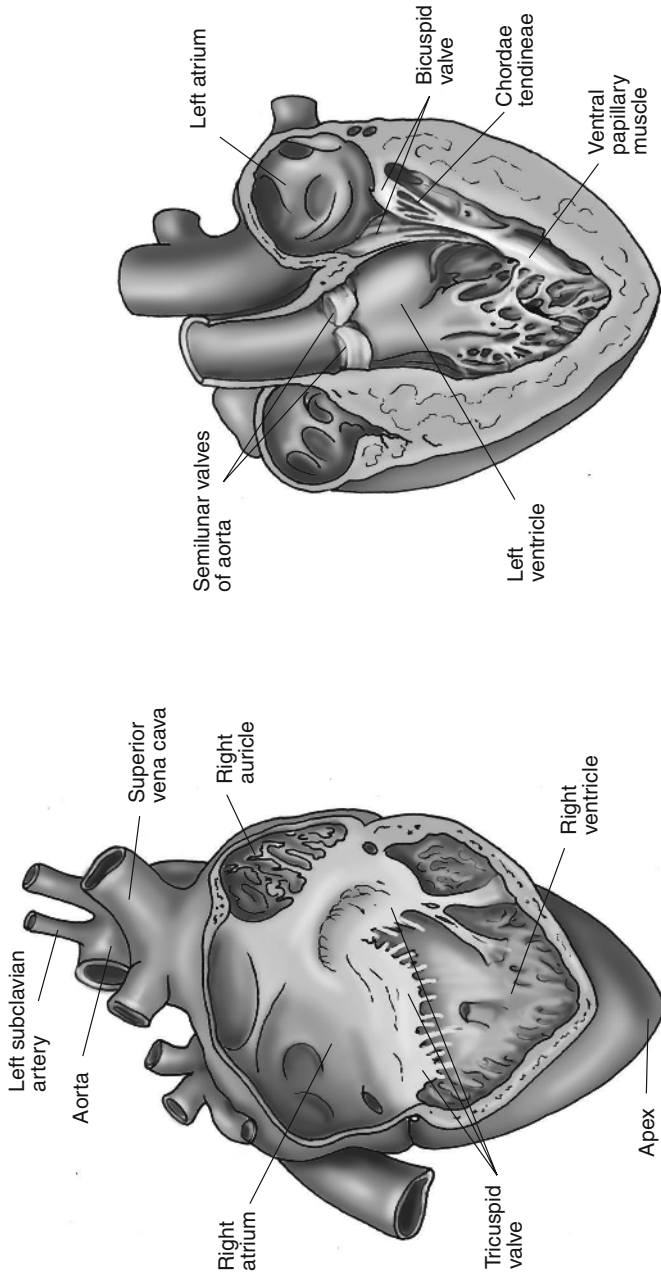


Figure 1.12 Circulatory: internal view of the heart. For color detail, see color plate section, CP-2.

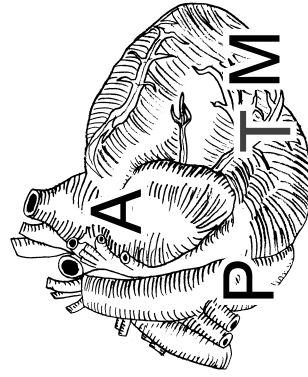
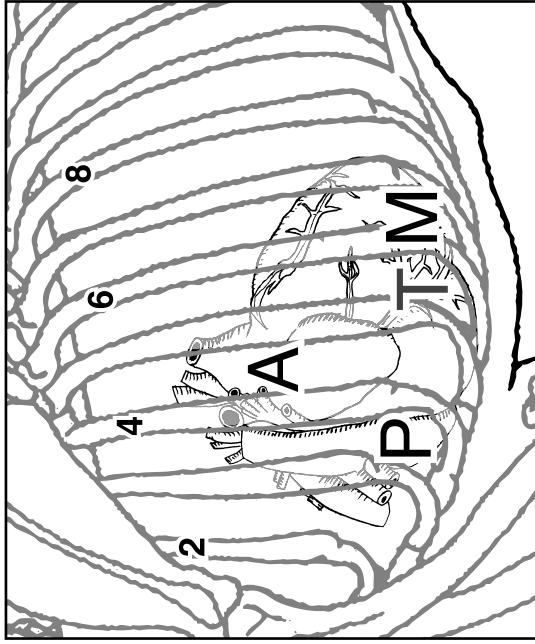


Figure 1.13 Circulatory: heart valves.

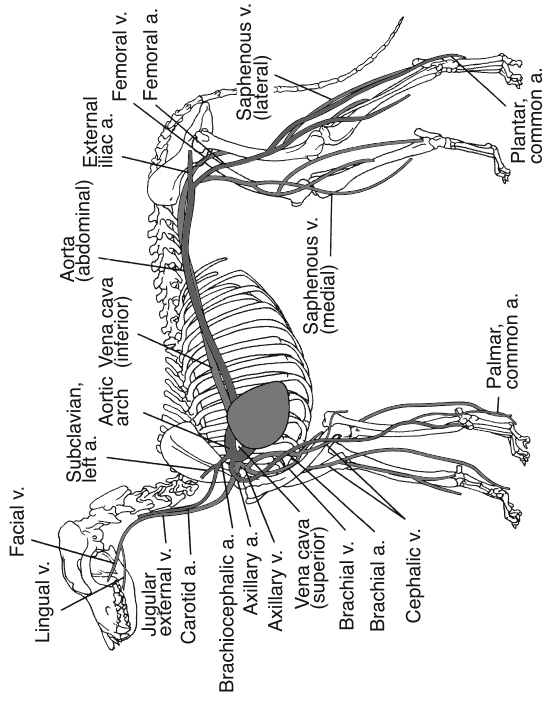


Figure 1.14 Circulatory: lateral view. For color detail, see color plate section, CP-3.

Nervous System

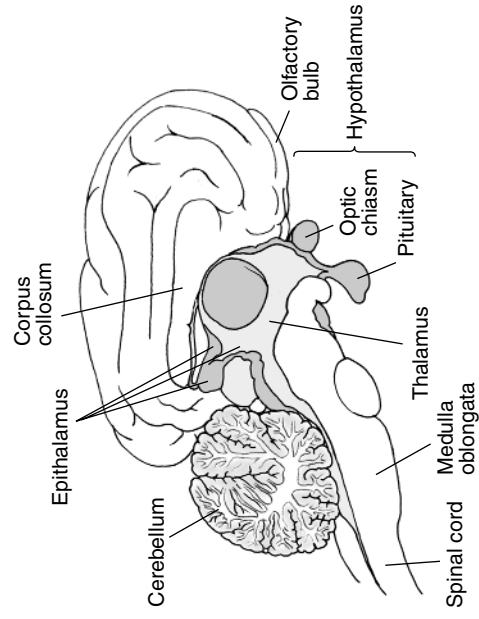


Figure 1.15 Nervous system: lateral view of the brain.

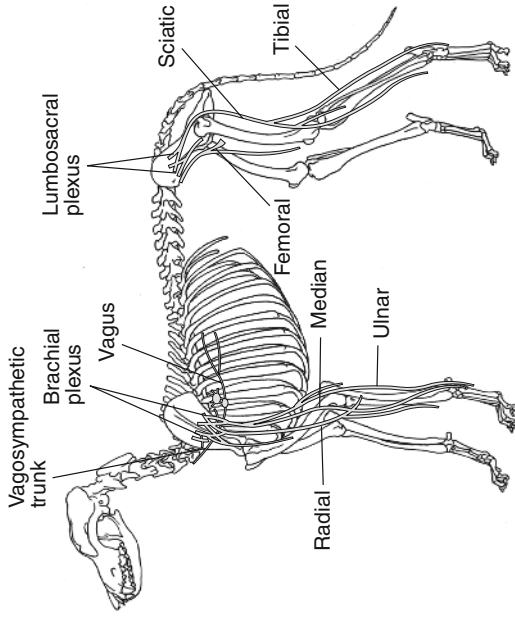


Figure 1.16 Nervous system: lateral view. For color detail, see color plate section, CP-3.

Urogenital System

See Skill Box 2.3, Abdominal Examination, page 34.

See Skill Box 11.11, Urogenital Procedures: Urinary Catheterization, page 611.

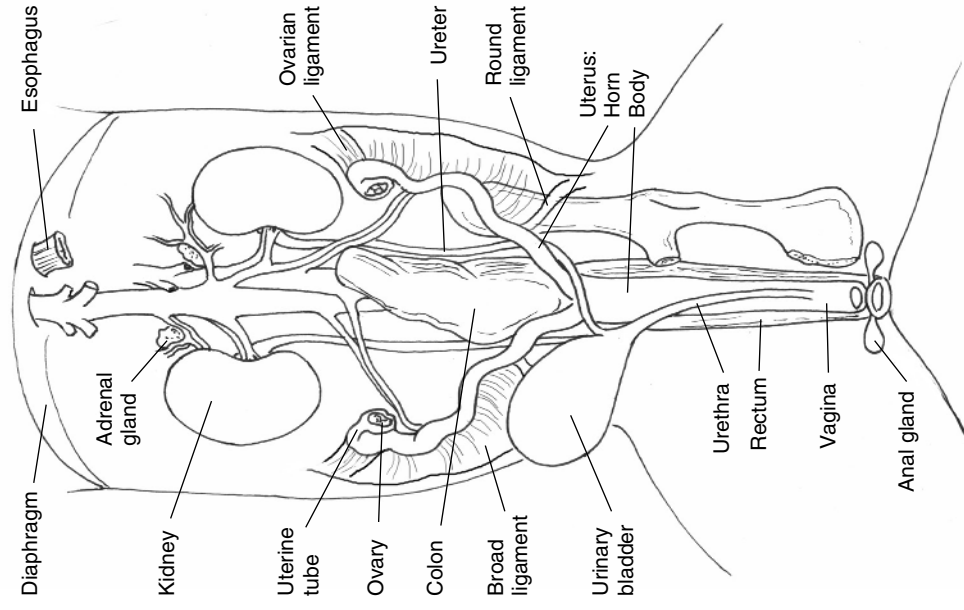


Figure 1.17 Urogenital: ventral view, female.

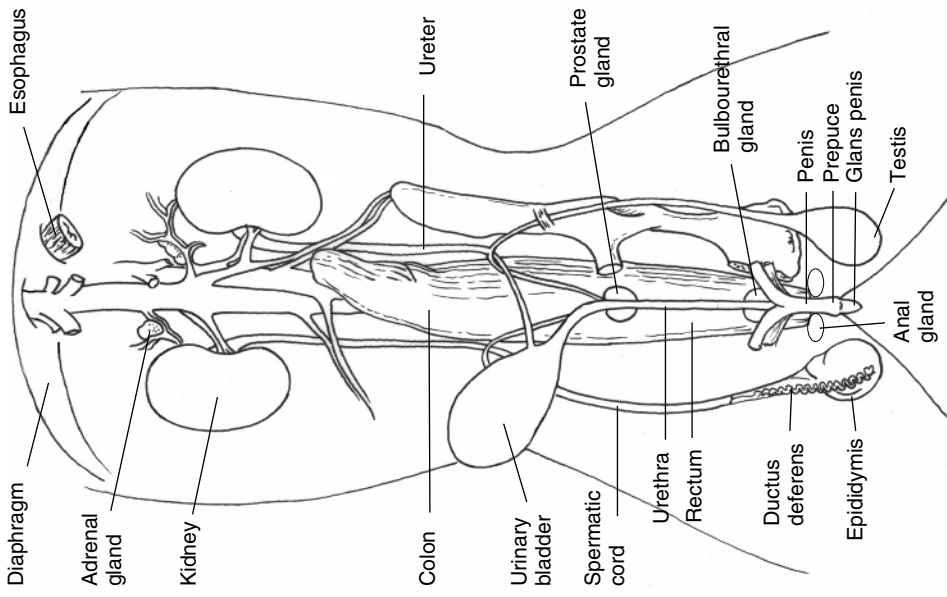


Figure 1.18 Urogenital: ventral view, male.

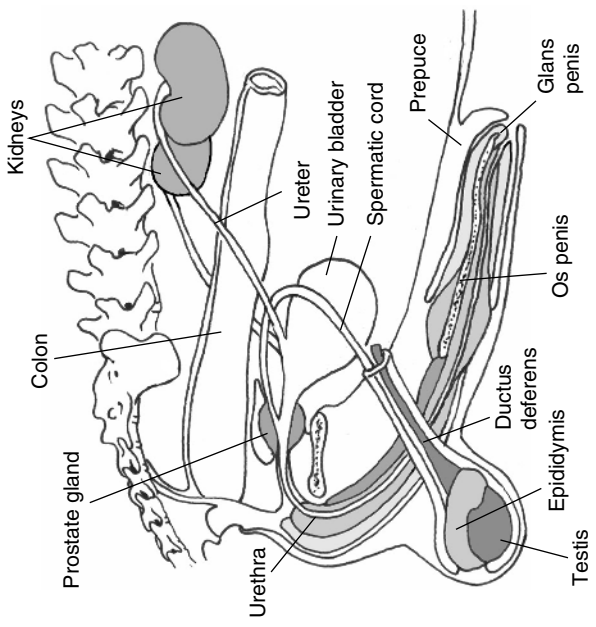


Figure 1.19 Urogenital: lateral view, male.

See Skill Box 2.4, Ophthalmic Examination, page 34.
 See Skill Box 2.13, Ear Cleaning and Flushing, page 62.

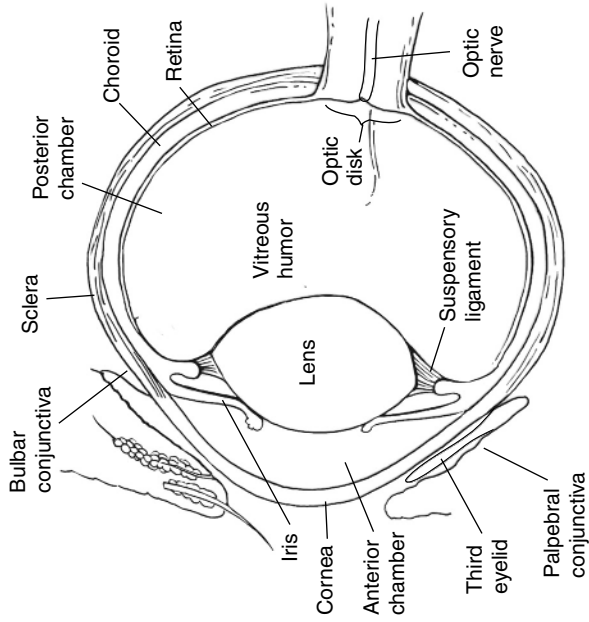


Figure 1.20 Eye.

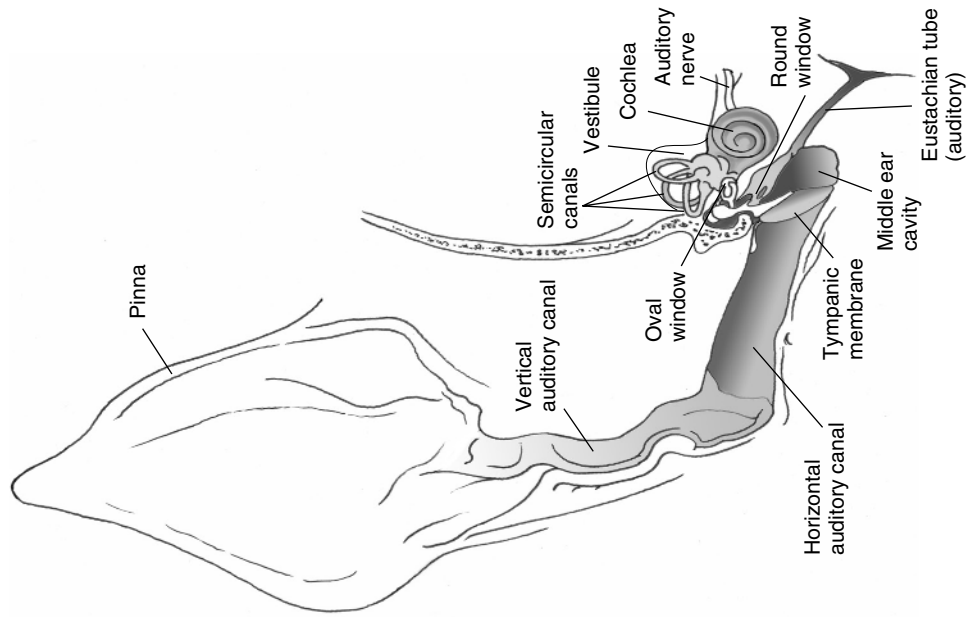


Figure 1.21 Ear.