

LAB 1

EVALUATING HARDWARE READINESS AND CAPABILITY

THIS LAB CONTAINS THE FOLLOWING EXERCISES AND ACTIVITIES: _ _ _ _

Exercise 1.1 Evaluating Your Machine

Exercise 1.2 Running the Upgrade Assistant

Lab Challenge Reviewing Your Upgrade Options

BEFORE YOU BEGIN

The lab environment consists of student workstations connected to a local area network, along with a server that functions as the domain controller for a domain called adatum.com. The computers required for this lab are listed in Table 1-1.

Table 1-1
Computers Required for Lab 1

<i>Computer</i>	<i>Operating System</i>	<i>Computer Name</i>
Server	Windows Server 2012	SVR-DC-A
Client	Windows 7 Enterprise	WKSTN-MBR-D

In addition to the computers, you will also need the software listed in Table 1-2 to complete Lab 1.

2 Configuring Windows 8

Table 1-2

Software Required for Lab 1

Software	Location
Windows 8 Upgrade Assistant (Windows8-UpgradeAssistant.exe)	\\SVR-DC-A\software
Lab 1 student worksheet	Lab01_worksheet.docx (provided by instructor)

Working with Lab Worksheets

Each lab in this manual requires that you answer questions, shoot screen shots, and perform other activities that you will document in a worksheet named for the lab, such as Lab01_worksheet.docx. You will find these worksheets on the book companion site. It is recommended that you use a USB flash drive to store your worksheets so you can submit them to your instructor for review. As you perform the exercises in each lab, open the appropriate worksheet file, type the required information, and then save the file to your flash drive.

SCENARIO

After completing this lab, you will be able to:

- Use basic tools to evaluate your PC's hardware
- Run the Upgrade Assistant to determine if your machine can be upgraded to Windows 8

Estimated lab time: 35 minutes

Exercise 1.1 Evaluating Your Machine	
Overview	In this exercise, you will use several built-in tools to view the current Windows version and hardware.
Mindset	Before you install or deploy Windows to a machine, you need identify what hardware the machine has and if that hardware meets the minimum requirements for Windows 8. An enterprise organization may have a software component that can perform inventory. However, you must still identify the hardware of a computer using the built-in tools that are included with Windows 8.
Completion time	10 minutes

1. On **WKSTN-MBR-D**, log on using the **adatum\administrator** account and the **Pa\$\$w0rd** password.
2. Click **Start**, then right-click **Computer** and choose **Properties**.

**Question
1**

What version and edition of Windows are you using? Is it a 32-bit or 64-bit version of Windows

**Question
2**

How much memory does your system have?

3. Close the *System* window.
4. Click the **Start > All Programs > Accessories > System Tools > System Information** (see Figure 1-1).

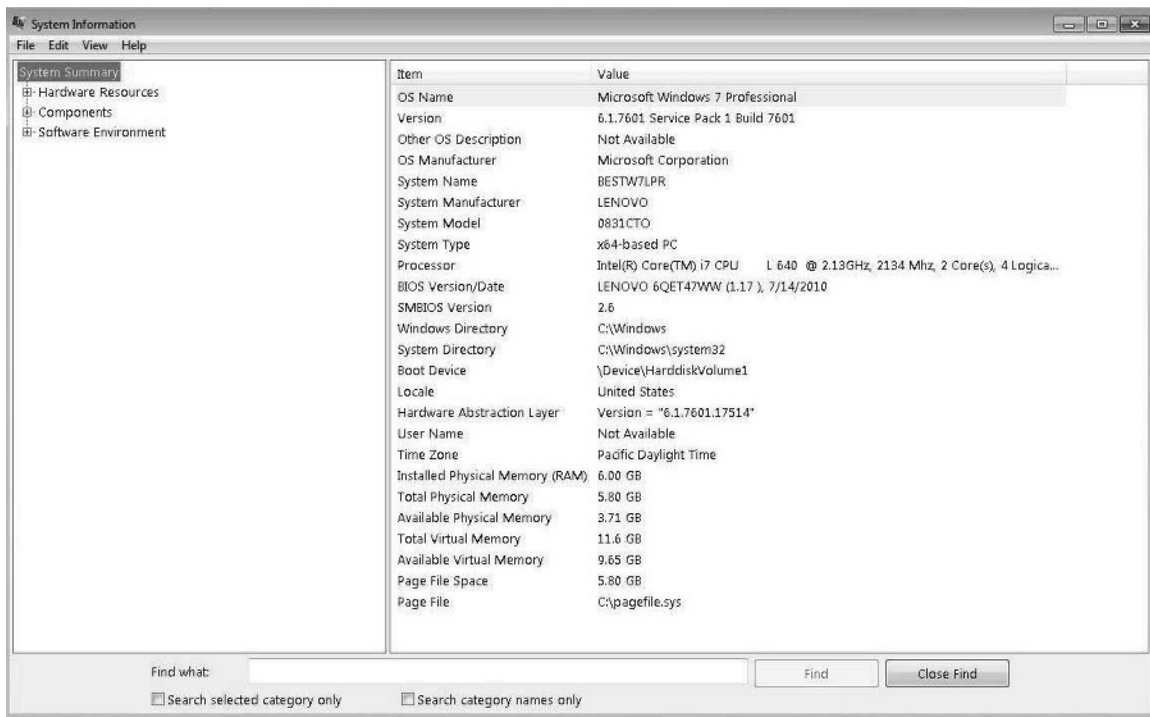


Figure 1-1
The System Information window

**Question
3**

Which version are you using?

**Question
4**

Which processor or processors do you have?

4 Configuring Windows 8

5. Close the *System Information* window.
6. On the Taskbar, click the **Windows Explorer** icon.
7. Click **Computer**.

Question 5

How much disk space do you have on your C drive?

End of exercise. Leave the computer logged into WKSTN-MBR-C for the next exercise.

Exercise 1.2 Running the Upgrade Assistant

Overview	In this exercise, you will run the upgrade assistant to scan your computer to see what it can be upgraded to.
Mindset	To make things easier for an end-user, Microsoft has developed the Windows 8 Upgrade Assistant, which scans the computer to determine if the computer can be upgraded to Windows 8 and also determines the versions of Windows 8 that you can upgrade to based on your upgrade needs.
Completion time	15 minutes

1. On the Taskbar, click the **Windows Explorer** icon.
2. Navigate to the \\SVR-DC-A\software folder.
3. Double-click the **Windows8-UpgradeAssistant** application.
4. When the *Here's what we found* page opens, take a screen shot by pressing **Alt+Prt Scr** and then paste it into your Lab 1 worksheet file in the page provided by pressing **Ctrl+V**.
5. Click **See compatibility details**.

Question 6

Which items do you need to review?

6. Click **Close**.
7. Click **Next**.
8. Log off of **WKSTN-MBR-C**.

Lab Challenge Review Your Upgrade options	
Overview	During this exercise, you will perform a written exercise to ensure that you understand the available installation and upgrade options.
Mindset	Prior to installing or deploying Windows, you must look at the hardware that you want to use and determine if the computer can handle Windows 8. If the hardware cannot, you will need to determine if you want to upgrade the current hardware, or replace the computer.
Completion time	10 minutes

For this written exercise, answer the following questions based on the given scenario.

1. You are visiting a client that has a computer running Windows 7. However, you do not know the specifications for the computer. What tool or option can you use to quickly view the computer name, domain name, processor information, installed memory, if the system is 32-bit or 64-bit, the edition of Windows, and if Windows 7 includes a service pack or not?
2. You are purchasing a computer with Windows 8. You need to be able to add the computer to an Active Directory Domain. You will need to be able to access shared folders and printers on the network, and you need to share your printer to other users. You will need to be able to run a virtual machine running Windows XP on the computer. You will also need to install Office 2013. What is the least expensive edition of Windows 8 that you will need?
3. What is the maximum number of processors that Windows 8 Professional can support?
4. You have a computer that has a Intel quad-core processor. Can you run Windows 8 Professional and will Windows be able to use all four cores?
5. You have an application that will require 8 GB of memory. What is the least expensive edition and version of Windows 8 that you can use for this application to run?
6. You want Windows 8 to use BranchCache. What is the least expensive edition of Windows 8 that you can use?
7. You have a computer running Windows 7 Professional. Which version of Windows can you perform an in-place upgrade to?
8. You have Windows Vista. You want to upgrade to Windows 8 while keeping all of the applications. How should you upgrade the system?

End of lab.