

1

The Oral Environment and the Main Causes of Tooth Structure Loss

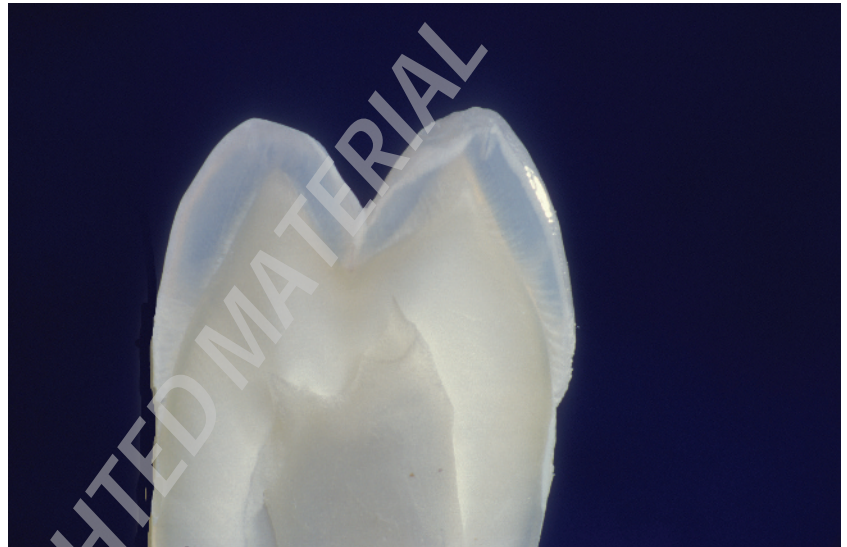
J. Kaidonis, G.C. Townsend, J. McIntyre, L.C. Richards & W.R. Hume

The human oral environment evolved within a Paleolithic (Stone Age) hunter-gatherer setting, reflecting well over 2 million years of evolution from primate origins of even greater antiquity. The interplay between genes and differing environments over many tens of thousands of generations resulted in various oral adaptations that together provided good oral health and function.

Common themes were evident among Paleolithic groups. First, dentitions showed extensive wear when compared to many modern societies, yet the teeth remained functional. Second, although the diet was generally acidic, erosion and the non-carious cervical lesions that are endemic in current populations were not apparent. Third, oral bacterial biofilms were present, yet the prevalence of dental caries and periodontal disease was so low that it could be considered insignificant.

With the advent of farming in human societies about 10,000 years ago and increasingly over the last 400 years, as food manufacture and distribution became more common, changes in our diet have led to profound changes in the oral ecosystem. These changes were sudden from an evolutionary perspective and they have been primarily responsible for the modern oral and many of the systemic diseases now afflicting human populations.

Among those diseases are several that lead to the loss of tooth structure.



The Human Oral Environment in Health

The sialo-microbial-dental complex in a state of balance

The human mouth is centrally involved in the first stages of digestion, as is the case in all species with alimentary canals. The need to chew and swallow a variety of foods in order to survive in different environments caused the evolution of oral and dental tissues, salivary secretions and a unique oral microbial ecology. These elements together can be referred to as the sialo-microbial-dental complex. 'Sialo' means to do with saliva. All elements were, until recent centuries, in relative harmony or balance in the great majority of individuals.

Tooth structure, diet, the oral microbial mix, saliva and biofilms¹ (dental plaque) are closely associated and interrelated physically, functionally and chemically. Although each is described separately in the sections below, the components have evolved together and function as an integrated system. All contribute to health, and under some circumstances all contribute to disease.

Tooth Structure

Enamel

Dental enamel, the strongest substance in the human body, is a highly mineralized tissue with a well-defined structure. It is formed by the precipitation of crystals of apatite, a compound comprised of calcium, phosphate and other elements, into an extracellular protein matrix secreted by specialized cells called ameloblasts.

The precipitation of apatite is called 'calcification' or 'mineralization'. It commences before the emergence of the tooth in the mouth. The protein matrix dissolves as the crystals grow, leaving a tissue comprised almost entirely of apatite crystals in a unique physical arrangement.

Of central importance to the understanding of the chemical dynamics relating to the inorganic components of tooth structure is the fact that ions can move in and out of apatite crystal surfaces, that is, the crystals can shrink, grow or change in chemical composition, depending on local ionic conditions.

Tooth shape is determined by ameloblast proliferation

Ameloblasts are derived from epithelial cells of the embryonic mouth. In a process that is closely controlled genetically, they proliferate into underlying tissue to create the enamel organ, which has a shape or form unique to each tooth crown, defining the shape of the future dentino-enamel junction.

The underlying tissue, which becomes the dental papilla, is derived from ecto-mesenchymal neural crest cells that have previously migrated into the region of the developing oral cavity. These mesenchymal tissues give rise to all of the other dental tissues: dentine, pulp, cementum and to the adjacent periodontium.

Differentiation of ameloblasts and odontoblasts, which are mesenchymally derived, results from a series of reciprocal interactions between the adjacent cells of the enamel organ and those of the dental papilla, mediated by various signalling molecules and growth factors among and between the two groups of cells.

Calcification and the formation of enamel prisms

Stimulated by the deposition of pre-dentine by adjacent odontoblasts, ameloblasts secrete an extracellular matrix of protein gel made up of amelogenins and enamelin. The local ionic environment of the extracellular fluid is supersaturated with calcium and phosphate, and the matrix proteins form an appropriate lattice for the precipitation and growth of apatite crystals.

Also sometimes called hydroxyapatite (HA), apatite is a molecule with the basic structure $\text{Ca}_{10}(\text{PO}_4)_6(\text{OH})_2$ highly substituted with other ions, most notably carbonate in place of some phosphate ions, and fluoride in place of some hydroxyl ions. Strontium, sodium, zinc and magnesium may also be present in place of some calcium ions, usually in trace amounts.

Highly carbonated apatite is much more soluble than apatite with low carbonate, a significant factor in post-eruption enamel maturation as carbonate is replaced with phosphate from saliva by ion exchange. The degree of solubility of apatite also varies with the level of substitution between hydroxyl and fluoride ions. Extensive research has demonstrated that optimal levels of fluoride within apatite, most probably achieved also through ion exchange once in the oral environment rather than incorporation during initial formation, lead to the creation of enamel surfaces of very low solubility.

The apatite crystals coalesce within the gel matrix, their orientation being aligned to a strong degree, very probably because of orientation of the matrix protein molecules. The proteins dissolve as the crystals grow, creating a tissue comprised largely of apatite crystals.

As crystal growth continues, the ameloblasts continue to secrete matrix proteins and move away from the developing hard tissue, leaving long, generally parallel apatite crystals in arrays that form enamel rods, or prisms, with a relatively enamelin-rich boundary layer between rods corresponding to the interface between individual ameloblasts in the secreting layer. There is a change in the crystal orientation near the rod boundaries, with individual rods being connected by varying amounts of inter-rod crystallites (Figures 1.1 and 1.2).

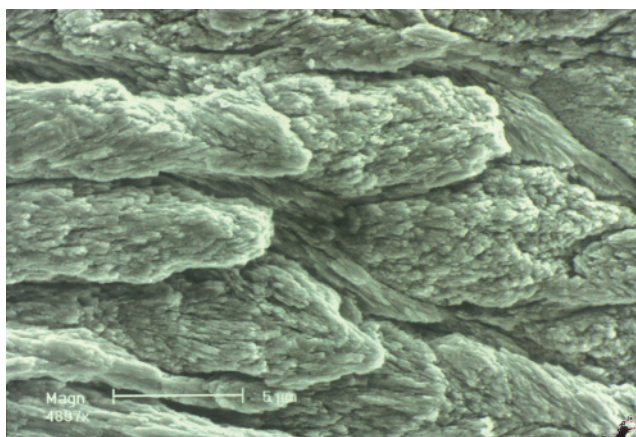


Figure 1.1 The surface of a specimen of fractured enamel showing the enamel rods, which consist of bundles of enamel crystals. The rods lie relatively parallel with each other so there is a distinct 'grain' along which fracture of the enamel is likely to occur. Note also the spaces between the rods that will be filled with ultrafiltrate in life. Magnification x 4,800. Courtesy of Professor Hien Ngo.

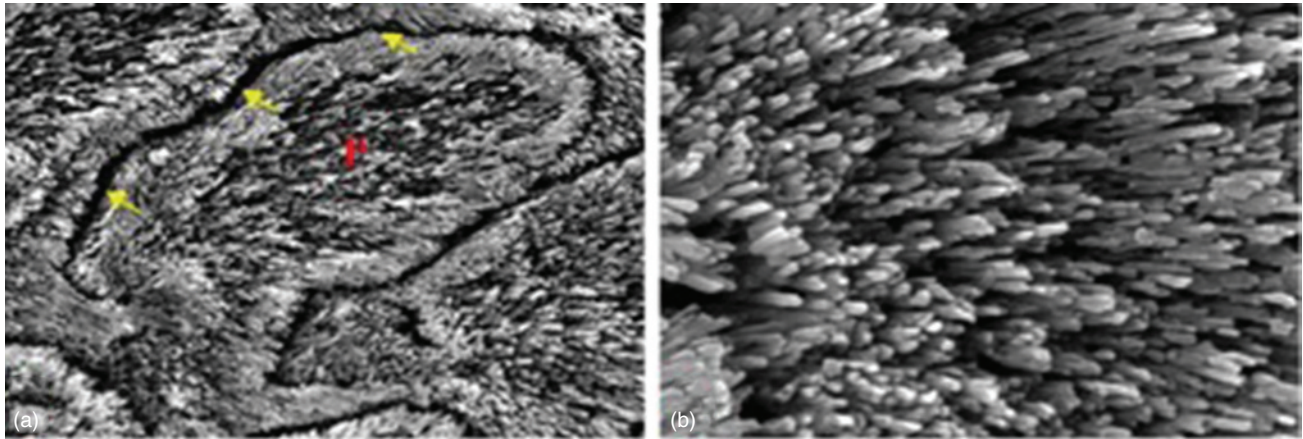


Figure 1.2 (a) Scanning electron micrograph of enamel prisms showing the interprismatic space (yellow arrows) with a periphery of densely packed crystals in parallel arrays. Courtesy of Professor Hien Ngo. (b) Higher magnification scanning electron micrograph showing the space between the apatite crystals, which in life is occupied by an aqueous organic gel matrix, and their orientation. Courtesy of Professor Hien Ngo.

By the time permanent teeth erupt, the enamel is normally 96–98% carbonated HA by weight, and about 85% by volume. The remainder of the enamel, consisting of about 3% protein and lipid and about 12% water by volume, exists in laminar pores between the enamel crystals (see Figures 1.2 (a) and 1.2 (b)).

Each enamel crystal exists within a local hydration shell, and is in ionic equilibrium with it. It is within this local aqueous phase, which itself is in ionic balance with its adjacent environment, that the dynamics of post-eruption maturation will take place, and it is within this phase of enamel, influenced by the adjacent biofilm, that post-eruption demineralization and remineralization may occur under appropriate conditions of local pH.

Filtered tissue fluid moves very slowly outward through enamel in vital, erupted teeth because the pressure inside the tooth is higher than that outside. This tissue fluid is called ultrafiltrate and it contains no protein, only water and inorganic ions. Ultrafiltrate does not appear to be a significant factor in local ion dynamics near the enamel surface, very probably because of its very slow rate of outward flow.

Macroscopic structural elements affecting appearance and strength

Enamel is formed in an incremental manner and fine cross-striations may be seen within the prisms, representing daily increments of matrix production. Larger striations, the striae of Retzius, probably reflect a 7–10-day rhythm in the rate of matrix production and mineralization. Where the striae of Retzius reach the surface, mainly in the cervical region, they can produce distinct grooves or depressions referred to as enamel perikymata. These run circumferentially around the crown giving it a slightly rough surface texture and disperse reflected light in a way that gives the tooth its characteristic appearance.

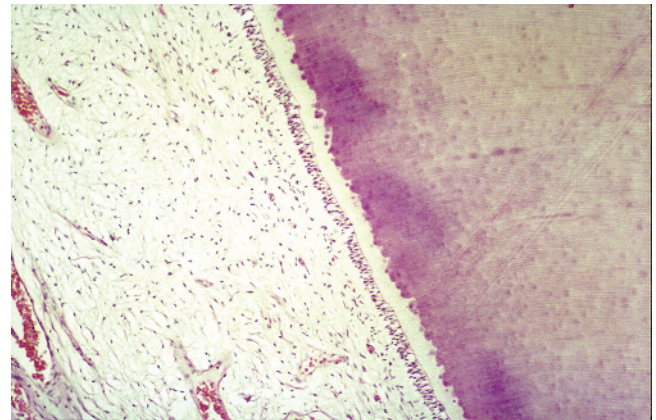


Figure 1.3 Histology of dentine. Low power view of dentine showing, from right to left, dentine, pre-dentine, odontoblasts and dental pulp. Magnification x 100.

The orientation of the enamel rods give the human enamel a physical structure, or ‘grain’ (Figure 1.3). This makes the enamel ‘anisotropic’, meaning that its physical properties differ depending on orientation. The enamel rods in the regions of cusp tips and incisal edges are often arranged more irregularly. They are referred to as gnarled enamel and it is believed that this twisting increases strength. The innermost and the outermost layers of enamel are more homogeneous and are the most highly mineralized regions of the enamel cap. The enamel in these regions is referred to as ‘prismless’ or ‘amorphous’.

Modifications to calcification

During enamel formation, the rate of dissolution of the matrix protein seems to be temperature-dependent, because episodes of high body temperature, or fever, during enamel formation can lead to defects in enamel structure. The rate

of dissolution may also respond to the levels of fluoride in the hydroxyapatite crystals, with very high levels of fluoride causing defects in enamel mineralization, or mottling. As noted above, at optimal levels, fluoride is associated with low enamel solubility.

Thickness of enamel and the effect on colour

The thickness of enamel varies in different parts of the crown, being thickest at the cusps and incisal edges and thinnest in the cervical region. The natural colour of the enamel is moderately translucent white or whitish-blue. This colour shows in the incisal region of teeth and the cusp tips where there is no underlying dentine. As the enamel becomes thinner, the colour of the dentine shows through and the enamel appears to be more yellow. The degree of mineralization of the enamel also influences its appearance; hypo-mineralized areas appear more opaque than normally well-mineralized regions, which are relatively translucent.

Dentine

Dentine forms concurrently with enamel through the mineralization of a quite different matrix protein, collagen, which is secreted by mesenchymally-derived odontoblasts. Although similar to bone in terms of its main constituent elements, dentine has a unique structure consisting of dentinal tubules that radiate out from the pulp and which are surrounded by mineralized collagen. The tubules are formed because the odontoblasts, in addition to secreting matrix, leave a thin, cellular process, the odontoblastic process, behind as they withdraw from the advancing front of secreted matrix that then mineralizes. This structure, and in particular the dentinal tubules which contain tissue fluid and for some of their length cell processes, give dentine many properties that are very relevant to dental health and disease and to the restoration of defects.

The dentino-enamel junction

The junction between dentine and enamel, the dentino-enamel junction, is not a flat plane but is 'scalloped', especially in those areas subject to high occlusal stress. Dentine physically supports the overlying enamel and shows some degree of flexibility, which may help to prevent fracture of the highly mineralized and relatively brittle enamel.

Dentinal structure

Collectively, dentine is about 70% by weight inorganic material and about 20% organic. The inorganic material is composed of crystals of apatite, in a similar association with collagen as occurs in bone, but with a different physical arrangement that is determined by the presence of dentinal tubules. The perimeter of each tubule, the peri-tubular dentine, is more mineralized than the inter-tubular dentine, and neither is as highly mineralized as enamel. Unlike bone, dentine contains

no blood vessels, nor does it normally contain the equivalent of osteoclasts. It is in all senses a vital and biologically reactive tissue because of its intimate association with odontoblasts and their cellular processes within tubules, and therefore with the adjacent dental pulp, but it does not undergo cellular remodelling as bone does.

Anatomy of dentine tubules and their continuing maturation

The non-calcified tubule, created by the presence of the odontoblastic process during and after matrix deposition and subsequent calcification, extends from the odontoblastic cell body on the outer surface of the pulp chamber to the dentino-enamel junction. When the dentine is completely formed, this can be 5 mm or more in length (Figures 1.3 and 1.4). Dentinal tubules have unique characteristics. They are tapered, with the diameter reducing by about half as it approaches the enamel. In adult dentine, the odontoblastic cell process may only occupy the inner one-third to one-half of the tubule but the entire tubule can remain patent. The non-protoplasmic portion of the tubule is filled with tissue fluid.

With advancing age, peritubular dentine continues slowly to calcify, and the internal diameter of each tubule progressively decreases. The ions that precipitate to form this additional mineral come from the pulpal extracellular fluid, which is supersaturated relative to apatite. This progressive mineralization throughout life leads to a tissue that is denser, less permeable and less flexible. Each of these changes is relevant to decisions in the restoration of structural defects, as will be described in Chapter 15.

There are also protoplasmic connections between odontoblastic processes, and therefore connections between adjacent tubules by what are termed lateral tubules in a quite complex arrangement (Figure 1.5).

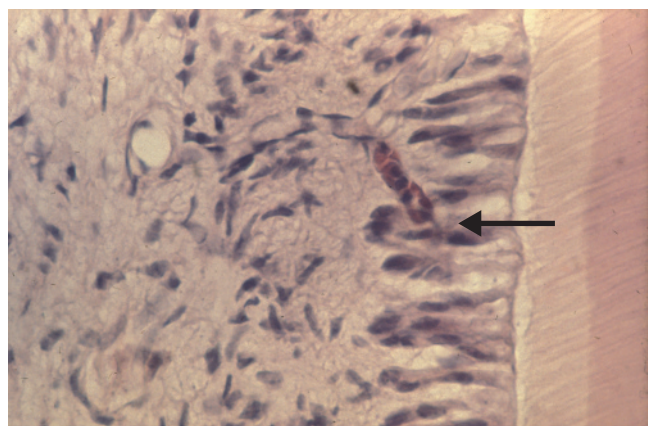


Figure 1.4 Histology of dentine. A higher power view of the odontoblast region. Magnification x 400.

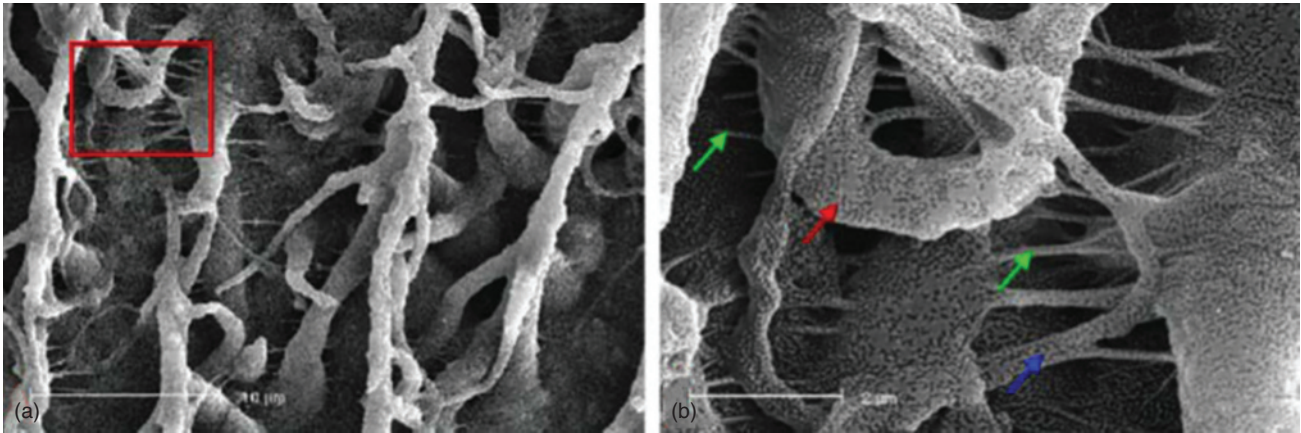


Figure 1.5 (a) Scanning electron micrograph showing the primary dentine tubules as well as the lateral tubule network. Courtesy of Professor Hien Ngo. (b) Higher magnification of the selected area in Figure 1.5 (a), showing the lateral branches (red arrow) extending from the major tubules. This network was further divided into sub-micron (blue arrow) and even finer divisions at the nanometer level (green arrow). Courtesy of Professor Hien Ngo.

Dentinal fluid

The odontoblastic tubules are full of fluid, some intracellular (i.e. within the odontoblastic processes) and some extracellular. The extracellular fluid moves outward due to the pressure gradient between the extracellular fluid of the pulp and the inside of the mouth. In the normal erupted tooth, the movement is slow because of the very limited permeability of enamel, but if the enamel is missing, as occurs in some advanced defects and often during restoration of defects, fluid flow is much more rapid. Dentinal wetness depends primarily on the size and number of the tubules, so dentine is wetter closer to the pulp where the tubules are larger in diameter and more closely packed. Dentinal wetness may be a relevant factor in many tooth restorative procedures.

Chemicals can diffuse through the dentine tubules just as they can through any water-based medium. The rate and amount of diffusion are dependent on the concentration gradient, the molecular size of the solute, the temperature, the thickness of the dentine, the diameter and number of tubules, and whether or not the tubules are partially or completely blocked. The natural wetness of dentine, the tubule structure and factors that occlude tubules are important factors to be considered when replacing missing tooth tissue. As noted above, dentine becomes less wet with age, because tubule diameter tends to decrease. If the pulp dies, the dentine remains wet but outward flow is likely to be considerably reduced.

Dentinal sensibility

The movement of fluid within dentinal tubules causes pain. Such movement can occur through osmotic pressure differential when dentine is pathologically or surgically exposed, through large changes in temperature, or during and after tooth cutting and drying in restorative procedures. The sensibility is very probably mediated by nerve endings in the odontoblastic and sub-odontoblastic layer of the pulp. When the pulp is acutely inflamed, or when there are areas of acute inflammation in the

chronically inflamed pulp, sensibility is increased. These phenomena are described in more detail below and in Chapter 12.

Secondary dentine

Odontoblasts normally remain for the life of the tooth, with their cell bodies on the inner surface of pre-dentine and their processes extending into it. They retain their capacity to secrete matrix protein and to form additional dentine. Dentine is slowly laid down throughout the life of the tooth, leading to a gradual reduction in the size and shape of the pulp cavity. This so-called secondary dentine is laid down particularly on the roof and floor of the pulp chamber.

Tertiary (reparative) dentine

Thickening of the dentine occurs more rapidly when the dentinal surface is exposed to the oral environment by accident or wear, or when odontoblasts come into contact with the products of bacterial metabolism at levels below those that might cause death, for example, in advancing caries or beneath a leaking restoration. In these circumstances, the odontoblasts can lay down additional dentine relatively rapidly. This tissue is termed tertiary reparative dentine.

Irregular reparative dentine

If sufficient damage occurs to kill some odontoblasts but the adjacent pulpal tissue survives, new dentine-forming cells can differentiate from the pulpal ecto-mesenchyme. The resultant tissue is called irregular reparative dentine and it may lack the usual tubular structure and may include cell bodies.

Smear layer

Mechanical action on exposed dentine such as the mastication of hard fibrous foods or cutting teeth with metal instruments will produce a smear layer (Figure 1.6) that seems to be a



Figure 1.6 Dentine with smear layer. Smear layer left on the surface of the floor of a cavity following cavity preparation. Courtesy of Professor Hien Ngo.

combination of ‘burnished’ dentine and, in the case of chewing-induced wear, proteins derived from saliva, or pellicle (see saliva and pellicle, below). In such cases, the dentinal tubules may be effectively occluded, which reduces or eliminates associated sensibility. Following cusp fracture, where no mechanical ‘rubbing’ of the dentine occurs, the tubules may become blocked by natural deposition of salivary components and, if the salivary circumstances allow, subsequent calcification of those components is likely to occur.

Carbonate, fluoride and dentinal apatite solubility

As described above, surface enamel can become less soluble than the newly formed tissue by ion exchange with saliva. This very probably occurs only to a limited degree within dentine, unless or until it is exposed to saliva. In that circumstance the dentine is initially at relative high risk of loss of mineral, because the apatite is of relatively high solubility. However, as with enamel, if the tissue remains in contact with biofilm, and through that with saliva of neutral or slightly alkaline pH, and if high concentrations of fluoride are available, even episodically, over days and weeks such dentine will become progressively more highly mineralized and less at risk of decalcification.

Dental pulp

Development and constituents

During tooth formation, the growth of dentine inward from the epithelial cap slows dramatically as the tooth matures, encompassing a small body of tissue that is the dental pulp. The rate of dentine formation thereafter is sufficiently slow that a pulp cavity usually remains throughout life although it becomes progressively smaller.

The outer layer of the pulp, which is also the inner layer of the dentine, is comprised of the odontoblastic cell bodies. Immediately beneath this layer is a relatively cell-free zone, rich in

sensory nerve endings and blood capillaries. The great bulk of the remaining central pulp tissue is similar to connective tissue elsewhere in the body. It is made up of mesenchymal cells, defence cells and fibroblasts, collagen fibres, ground substance, blood vessel networks (from arterioles to capillaries to venules with accompanying sympathetic nerves), lymphatics, sensory nerve trunks and free sensory endings. This tissue provides metabolic support for the odontoblasts during rapid dentinal deposition, both in initial growth and during repair. If odontoblasts die, but the remainder of the pulpal tissues survives, new odontoblasts can differentiate from the pulpal ecto-mesenchyme to lay down irregular reparative dentine.

As is clear from the dental adaptations that occur in hunter-gatherers and which are described in more detail later in this chapter, teeth have a vigorous capacity to deposit new dentine in response to loss of structure caused by wear. In fact, the entire crown may be lost over only a few decades through wear and the remaining root structures remain vital, functional and healthy.

Sensory innervation of the pulp

Bare sensory nerve endings are in intimate association with the odontoblastic cell bodies, and some extend a short distance into dentinal tubules. Any stimulus that causes movement of these cell bodies may trigger action potentials within the sensory nerve network. As noted above (see section on dentinal sensibility, p. 5), fluid movement within the dentinal tubules therefore elicits sensation, which is interpreted as pain. Cell damage, inflammation or touch within the main body of the pulp also cause pain. The degree of stimulus necessary to bring about a pain response depends upon the sensitivity of the receptors and this will be substantially increased by inflammation within the tissue. It is reasonable to propose that the rich sensory innervation of the pulp serves a protective function for the oral cavity.

The blood supply to the pulp

The blood supply of the pulp is particularly rich, with the rate of blood flow per gram of tissue being similar to that found in the brain. This probably reflects the high metabolic activity levels of the odontoblasts during dentine formation and repair. It may also help the tissue to overcome chemical and bacterial insult. Because of the large number of capillaries present in the sub-odontoblastic layer, there will be a strongly hyperaemic response to local trauma. It is the blood supply of the pulp that determines the vitality of a tooth, not its innervation.

Effect of ageing

With advancing age a number of changes occur in the pulp even in the absence of significant wear, including a decrease in cellularity and an increase in the incidence of pulp stones and diffuse calcification. As the size of the pulp chamber decreases with continued deposition of dentine, the degree of vascularity decreases and so does the capacity of the pulp to withstand various insults.

The pulp best able to respond to rapid wear appears to be that of a relatively young individual. This is a significant factor to be considered in the management of acid-augmented wear, or the wear that can occur following loss of a significant number of teeth, and therefore occlusal support, when it occurs in an elderly individual.

Tooth root and cementum

Root formation

After the crown has formed, the cellular events at the proliferating cervical loop of the enamel organ change and the cemento-enamel junction begins to form. The cells no longer differentiate into functional ameloblasts but continue to induce the formation of odontoblasts, and therefore dentine. The odontoblasts grow inwards, each leaving behind a cell process and matrix proteins that mineralize to form root dentine.

Development of cementum

As the roots continue to form, the outer surface becomes covered with cementum, the fourth tissue unique to teeth. This bone-like tissue is formed by the calcification of matrix protein secreted by cementoblasts, which are cells derived from the adjacent ecto-mesenchyme of the dental follicle. Enmeshed in the cementum are the collagen fibres of the periodontal ligament and it is this system of fibres that connects the tooth root to the adjacent alveolar bone.

Periodontal tissues

Formation of the periodontal ligament

By the time crown formation is complete, ossification of the maxilla and mandible is well advanced. As new bone is formed around the erupting teeth, collagen fibres link alveolar bone to the cementum of the tooth root and the periodontal ligament becomes organized. While a detailed description of the development of periodontal tissues and the process of tooth eruption is beyond the scope of this book, it is relevant to note that by the time the tooth erupts, the oral mucosa overlying the dental arches has become keratinized to form the gingivae, which then adapt closely to the enamel of the tooth crown.

The healthy periodontium has periodontal ligament fibres connecting cementum to adjacent alveolar bone and, near the cemento-enamel junction, fibres connecting cementum to the gingival tissue. The gingivae are supported by these fibres and by the alveolar bone to form a tight cuff of fibrous, connective tissue covered with epithelium around the enamel of the tooth crowns. The epithelium that becomes closely adapted to the enamel at the dento-gingival junction is comprised of two parts: sulcular epithelium that is related to the gingival sulcus or crevice around the neck of the tooth, and junctional epithelium that forms an attachment to the enamel via a laminar structure and a system of adhesive hemidesmosomes. As long as they are

in good health, the closely adapted gingival tissues provide an effective barrier against bacterial movement from the oral cavity into the tissues around the tooth.

Saliva

Saliva is made up of water, organic components, mainly proteins, and electrolytes. Three pairs of glands, the parotid, submandibular and sublingual, produce most of the saliva. Minor glands distributed on the tongue, cheeks, palate and lips produce the remainder.

Salivary secretion is controlled by autonomic innervation. Parasympathetic stimulation will increase salivary secretions. Conversely, sympathetic stimulation, such as occurs during the fight-or-flight response, reduces secretions, as do many drugs that affect mood. In the healthy individual the smell or taste of food, thinking about eating, or most markedly the action of chewing will all increase the salivary flow rate, principally from the parotid, submandibular and sublingual glands.

Salivary flow is significantly reduced by many drugs which affect mood, because those drugs also change autonomic neurotransmission and therefore saliva flow control. For many dental patients this reduction in salivary flow is a major contributor to the development of diseases that result in loss of tooth structure. A more detailed description of saliva in that context is found in Chapter 16.

Composition and function of saliva

Components of saliva contribute to many functions that are essential for good oral health. A brief summary that focuses on those factors related to tooth structure follows (see Table 1.1).

Table 1.1 Functions of saliva

Ion reservoir	Calcium, phosphate and hydroxyl ions for remineralization
Buffer	Buffering both dietary and metabolic acids
Pellicle formation	Promotes biofilm formation for protection against acids
Lubricant	Facilitates swallowing and reduces mechanical wear
Mechanical cleansing	Agglutination of food debris, tissue and bacterial cells for clearance
Antimicrobial action	Oral microbes controlled through immunological mediators
Digestion	Amylase and lipase to break down starches
Taste	Solvent for ions that interact with taste buds
Excretion	Urea
Soft tissue health	Lubrication for comfort and includes growth factors for healing

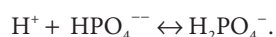
Water

Water is the solvent for the chemical interactions responsible for taste; for the mechanical process of oral clearance; and with salivary proteins called mucins for the lubrication of all hard and soft tissues in the oral cavity. Water softens the food bolus, enabling chewing and swallowing, and assists in speech.

Electrolytes and buffering

Salivary electrolytes include numerous ions found in other body fluids, Ca^{++} , K^+ , Na^+ , Mg^{++} , Cl^- , HCO_3^{--} , and PO_4^{---} . Among their functions is the buffering of acids. Some salivary proteins also act as weak buffers.

The principal, initial buffer is the phosphate system associated with resting saliva that is most effective at around $\text{pH} = 7 (\pm 0.5)$ and is associated with the following reaction:



If there is a drop in pH, the reaction moves to the right, producing more di-hydrogen phosphate ions. As the pH continues to drop, all of the mono-hydrogen phosphate can be used up.

At levels below about pH 6.0, a more powerful buffer, a high concentration of HCO_3^- ions, comes into effect from stimulated saliva produced by the parotid glands:



Because CO_2 is continuously lost, the reaction keeps moving to the right, making this an extremely effective buffering system.

Organic components

The organic components of saliva include many enzymes and proteins, some of which have antimicrobial properties. These components not only give protection against external pathogens but also influence microbial growth within the oral biofilm.

Salivary proteins and glycoproteins precipitate onto freshly-cleaned tooth surfaces. This initial layer, also called pellicle, was probably not a significant component of the biofilm in hunter-gatherers, except on surfaces undergoing daily wear. However, it may be significant in present-day dental patients, many of whom clean their teeth on a daily basis or more frequently with mechanical aids including toothpaste that contains abrasive particles. Cleaning with toothpaste is likely to remove the bacterial components of biofilm and some pellicle. Pellicle will rapidly re-form by precipitation from saliva. Newly formed or bacteria-free pellicle will be rapidly colonized by pioneer bacteria, but it may take several days or even weeks for a mature and stable bacterial ecology to develop.

Although it is not yet clear what the precise differences are in local biochemistry between biofilm formed in this way and mature biofilm, it appears likely that some differences are clinically relevant, as will be described in sections below.

Other organic components of saliva are digestive enzymes, such as α -amylase, that help break down starches; proteins such

as statharins and proline-rich proteins that bind to Ca^{++} ions to limit precipitation; and mucopolysaccharides and glycoproteins that are important for lubrication.

Saliva flow rate

The rate of saliva production or flow is extremely variable both within and between individuals, ranging from between 0.5–1.5 litres per day. Unstimulated flow rates range between 0.3–0.5 ml/min, while stimulated parotid saliva can range between 1.0–2.0 ml/min.

Multiple factors control flow in a healthy individual, including the level of body hydration and factors that relate to biological rhythms. More saliva is produced when standing, less when sitting and even less when lying down. More saliva is produced in a well-lit room and less in a dark room.

Of particular importance to dental health and disease is the marked increase in salivary flow rate that accompanies chewing. As noted above, stimulated flow can be four or five times that of resting flow. Also notable relative to dental health and disease is the increase in available phosphate, the rise in pH and the increased buffering capacity of high flow-rate saliva. The increase in salivary flow during chewing is not only advantageous to the survival of the individual in terms of swallowing and subsequent digestion of food, but also very beneficial in terms of the maintenance of strong and effective teeth, as will be described further below.

Also important to health and disease are the effects of many prescribed and some recreational drugs in reducing salivary flow. Most drugs that affect mood decrease salivary flow rate, and most individuals receiving three or more prescribed drugs suffer from reduced flow or dry mouth. In addition, there are systemic autoimmune conditions such as Sjögren's Syndrome and other pathologies that also can reduce salivary flow significantly. Some elderly individuals also suffer from reduced salivary flow, and reduction in salivary function and flow can result from radiotherapy and from chemotherapy. Whatever the cause, reduction in salivary flow increases the risk of loss of tooth substance.

Biofilms, Diet and 'Mineral Maintenance'

Located between erupted teeth and saliva is biofilm, composed of salivary proteins and glycoproteins, bacteria and their products, water and ions. Biofilm acts as a semi-permeable membrane between saliva and the tooth surface. It is reasonable to state that the human oral biofilm has evolved in tandem with the diet and oral structures, and that balanced interactions between the saliva, the biofilm and the teeth have evolved to ensure good oral health.

The traditional hunter-gatherer diet varied significantly depending on the environment, and, irrespective of the plant-animal ratio of the diet, the pH of the majority of the food consumed was mildly acidic. It is also relevant that, apart from milk

during the breastfeeding of infants, the only liquid consumed by individuals in hunter-gatherer societies was water. The water, usually ground water from rivers, streams or springs, contained fluoride.

The primary driver in these evolutionary interactions was most probably the advantage to survival by maintaining a strong and functional dentition, despite exposure to mildly acid foods. It is *not* likely that the primary driver of the biofilm was in any way related to dental caries, because until recent centuries that disease was extremely rare.

It appears very likely that in the circumstance into which humans evolved, the hunter-gatherer state, the biofilm was relatively stable in structure, and was a *very effective contributor to the maintenance of oral health*. Current evidence suggests that the changes in biofilm that have resulted from changes in human diet and eating patterns in recent centuries are strongly associated with the oral diseases that now demand the attention of dental professionals and their patients.

A mature oral biofilm in the mouth of an individual with little or no simple carbohydrate in the diet, as occurs in hunter-gatherer societies, contains a large diversity of microorganisms living symbiotically with one another. The main bacterial species in that oral ecosystem and biofilm are the non-mutans Streptococci, including *S. mitis*, *S. oralis* and *S. sanguinis*, and Actinomyces. In such a mouth there will be a very low proportion (~2%) of the mutans Streptococci such as *S. mutans*, *S. sobrinus* and other acid-producing and acid-tolerant species.

Non-mutans Streptococci generally live in environments that are close to pH neutral and can survive from salivary glycoproteins alone. That is, they are not dependent on the presence of dietary components for survival. Other species, such as Actinomyces, metabolize urea that is also secreted by the salivary glands. Both of these processes produce ammonia, thereby maintaining a mild alkalinity within the biofilm.

The diet influences the resting pH of such biofilm. In hunter-gatherer communities where the diet is high in meat, the biofilm tends to be slightly alkaline, while a higher plant diet tends to produce a resting pH that is slightly acidic. The resting pH in hunter-gatherer populations therefore varies mildly, between approximately 7.4 and 6.7.

Influencing the biofilm is saliva, on one hand, and the apatite of the tooth surface, on the other. The electrolytes within saliva diffuse within the biofilm and, if the pH of the biofilm is neutral or close to it, make the immediate environment supersaturated with respect to apatite. The constituent ions of apatite are highly reactive yet they generally do not precipitate out of solution in saliva, or most biofilm, because they are stabilized by salivary statharins and proline-rich proteins. The proteins can be thought of as keeping the ions apart by complexing with Ca^{++} and therefore preventing precipitation of calcium phosphate compounds. This adaptation also tends to prevent mineral precipitation within salivary ducts and the formation of salivary stones.

Biofilm pH relative to acid food

Although many components of the hunter-gatherer diet are mildly acidic, including meat several hours after slaughter and many vegetables, examination of both fossil remains and of the mouths of present-day hunter-gatherers shows little or no evidence of the effects of acid on tooth structure. This reflects the beneficial co-evolution of teeth, the biofilm and saliva in response to the human diet and its variations over many millions of years.

Mature hunter-gatherer oral biofilm and adjacent saliva very probably has the capacity to neutralize or buffer mildly acidic food. Three buffering mechanisms contribute: (i) phosphate buffer in resting saliva and therefore by diffusion in biofilm; (ii) microbial contributors to the pH neutrality of biofilm, as outlined above; and (iii) by increased phosphate concentration and particularly by bicarbonate in high flow rate saliva, stimulated by chewing hard food. Furthermore, it is highly likely that the biofilm in itself is a semi-permeable membrane that acts to a significant degree as an initial physical barrier to extrinsic acid as it enters the mouth.

Biofilm pH relative to bacterial metabolism of food components

Most hunter-gatherer foods contain mainly protein, fats and complex carbohydrates. Of these components, only the complex carbohydrates can be metabolized by biofilm microorganisms, and such metabolism is relatively slow, leading to little or no change in pH.

Although some simple sugars of various types, for example, the monosaccharides, fructose and glucose, and the disaccharides, lactose and sucrose, may be present in the hunter-gatherer diet, they are either at low concentrations or are not eaten frequently. When these sugars are metabolized by the predominantly non-mutans bacteria, acids are produced at a relatively low level, because the microorganisms are neither very acid-tolerant nor highly acidogenic.

Demineralization and remineralization within the local environment

Acidic food and/or metabolic acids produced by bacteria in the biofilm from simple carbohydrates in the diet would cause the pH of the biofilm to fall only if the local buffering capacity was exceeded. If the pH became low enough and the acids were close enough to the tooth surface to influence the hydration cell of enamel crystals at or just beneath the tooth surface, unsaturated conditions would cause the dissolution of the crystal surfaces. This demineralization would reverse (remineralize) once the acids were buffered and the pH rose (Figures 1.7 and 1.8). Simultaneously with these interactions, drops in pH would cause the statharins and proline-rich proteins to release stabilized calcium within the salivary biofilm, also contributing to remineralization.

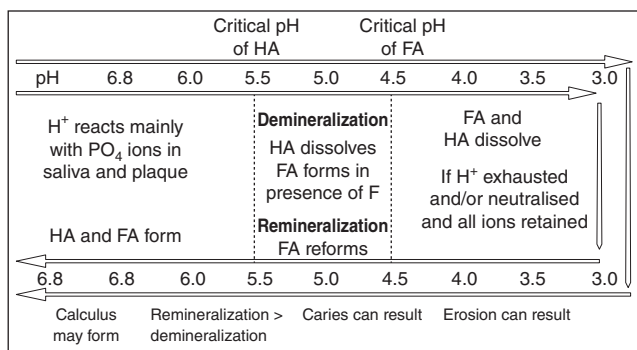


Figure 1.7 The demineralization-rem mineralization cycle: a conceptual chart to demonstrate the levels of pH at which the stages of the demineralization/rem mineralization cycle occur. F: Fluoride; FA: Fluorapatite; HA: hydroxyapatite. Source: [6]. Reproduced with permission from Knowledge Books and Software.

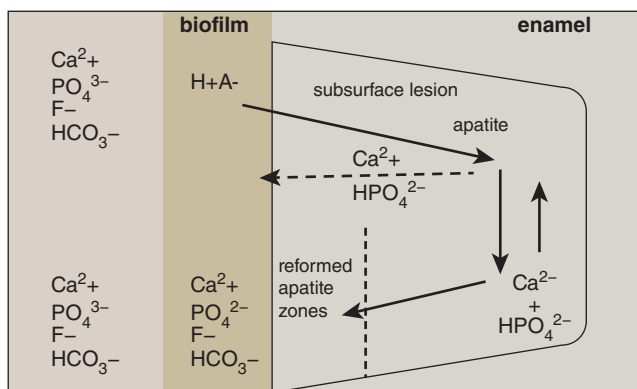


Figure 1.8 The remineralization part of the cycle. Note that the factors that favour remineralization include increased Ca⁺⁺, increased PO₄⁻, raised pH, and the presence of F⁻. Source: [6]. Reproduced with permission from Knowledge Books and Software.

This can be described as a ‘closed system’ demineralization–rem mineralization cycle, where the raw products from the dissolution of tooth structure are kept within the local environment and are reused for remineralization.

This local, closed system demineralization–rem mineralization cycle can only occur in the presence of an appropriately structured oral biofilm. Such a cycle not only protects the tooth from demineralization, but also promotes enamel maturation.

Enamel maturation

As explained above, the apatite of the newly-erupted tooth surface is highly substituted with carbonate, in particular, making it relatively soluble. During closed system demineralization–rem mineralization cycles as described above, the apatite crystals of enamel at and near the surface are in dynamic equilibrium with the adjacent aqueous phase of the biofilm. Since saliva, and therefore biofilm, have a lower concentration of carbonate, and

a higher concentration of phosphate than the adjacent tooth crystal, carbonate is progressively replaced with phosphate over time through the many local closed cycles of demineralization and remineralization.

Similarly, fluoride from natural ground water replaces some hydroxyl groups, depending on local fluoride concentration at the tooth surface. In the modern context, fluoride can also be made available from supplements, topical treatments, water supplies or toothpaste. Whatever the source, fluoride is available for substitution both by simple ion exchange and through the local demineralization–rem mineralization cycle. The result of both substitutions over time will be a significantly less soluble, or more mature, enamel surface.

The Oral Environment in Disease

Imbalance within the sialo-microbial dental complex

Dental caries, dental corrosion (also called erosion), some forms of abrasion (e.g. the wedge-shaped lesions of toothbrush abrasion, and acid-accelerated wear), and abfraction, are modern-day diseases. They probably result from diet and lifestyle changes that have occurred since the advent of farming some 10,000 years ago, and particularly since the widespread manufacture and distribution of food components, in particular, sucrose, began about 300 years ago.

Each of the conditions listed above is either rare or, in the case of wedge-shaped lesions, has not been found, in hunter-gatherer societies. In contrast, each condition is relatively common in present-day agricultural and industrial societies. In addition, cusp and tooth fracture, commonly found in heavily restored teeth in today’s societies, were also probably uncommon in the pre-industrial era, except when caused by external trauma.

The biggest change has been in the human diet for most of the world’s population. Foods today are much less abrasive, because they are gathered and prepared in ways that reduce or eliminate sand or similar particles. They are generally easier to chew, so they promote less salivary flow and less wear. They frequently contain sucrose, a simple sugar that, prior to recent agricultural and commercial development, was rare in the human diet. They also contain other simple carbohydrates in much higher concentrations than had been the case prior to developments in agriculture and the commercial manufacture and distribution of food.

Many liquid foods consumed today are extremely acidic, in particular, carbonated beverages, fruit juices, wine and ‘sports drinks’. In the hunter-gatherer era, water was only consumed when thirsty, and was pH neutral. Food rarely had a high degree of acidity. When it did, for example, during the opportunistic consumption of unripe fruit, the exposure to acid was seasonal and transient. Many liquid foods now available commercially in the form of carbonated beverages, ‘sports drinks’ and fruit juices are high in fermentable carbohydrate concentration as well as

being deeply acidic. Many such liquids are consumed for reasons other than hunger or thirst, for example, because of a belief in nutritional benefits in the case of some fruit juices, or because of the addictive effects of caffeine in the case of cola and other commercially distributed drinks.

Each of these changes in diet has strong and adverse effects on the oral ecosystem and on oral health. Factors that reduce salivary flow are probably the next most important contributor, after changes in diet, to the additional increases in incidence of dental diseases in recent decades.

The changes in diet and salivary flow have impacted directly on the nature of the biochemistry internal to oral biofilms, effectively tipping the balance towards demineralization. Although dental caries and the erosion-related group of diseases are separate and distinct from each other, and are described as such below, they have in common the effect of changes in biofilm structure and biochemistry, and therefore on tooth structure loss, principally through demineralization.

Dental Caries

Dental caries is the progressive loss of tooth mineral over time, caused by biochemical circumstances at, and slightly beneath, the tooth surface in which demineralization outweighs remineralization. Caries can begin on enamel surfaces or on exposed dentinal or root cemental surfaces, and becomes a significant problem for the afflicted individual when associated bacteria reach, infect and kill the dental pulp. Bacterial infection can then spread deep into facial bones through the root canal system, leading to localized, then systemic infection, illness and, in the absence of either surgical intervention or natural drainage, which may not readily occur, death.

Dental caries became common in many European societies and then elsewhere in the world following the introduction into the diet of sucrose in large amounts, through its agricultural production, industrial extraction and refining, and widespread commercial distribution at relatively low cost. Until as recently as 100 years ago sucrose was actively promoted as a safe and economical source of calories for human nutrition, with little recognition of its adverse health effects. Despite very clear evidence of its causal link to dental caries and to several systemic metabolic diseases (in particular, obesity, diabetes and cardiovascular disease), sucrose remains an almost ubiquitous component of manufactured food, and is widely used in home and commercial cooking.

The rapid development of what can be a life-threatening disease, caries, in many societies since the commercial development of the sucrose industry led to the development of the dental professions as we now know them.

The pathogenesis of the early carious lesion

It is reasonable first to explain the initiation of carious lesions in terms of the extended ecological plaque hypothesis. The

hypothesis proposes that if a previously normal and non-pathogenic biofilm is frequently exposed to fermentable sugars, the acidification of the biofilm becomes more frequent from acid produced by facultative non-mutans bacteria. This initially mild but frequent acidification of the biofilm selects for more aciduric (acid-tolerant) and acidogenic (acid-producing) bacterial strains, causing the biofilm as a whole to gradually become more acidic over time. This change selects for aciduric and acidogenic mutans Streptococci and other acid-tolerant species such as lactobacilli and bifidobacterium, further compounding the effect. At the same time there is selection against those species that produce alkalis and prefer alkaline environments, causing an overall reduction in the biodiversity of the biofilm.

In these circumstances, where the resting pH of the biofilm becomes lower, relatively little simple carbohydrate in the diet is required to produce a further drop in pH to a level where demineralization occurs. This is termed the critical pH. In periods between the ingestion of foods or drinks, pH in biofilm will rise due to salivary buffers and lessened metabolic activity by biofilm bacteria, but more slowly and to a lesser extent than would otherwise have been the case. The balance in what is termed the demineralization-remineralization cycle will therefore be tipped towards demineralization.

In extremely high caries activity individuals, the resting pH of biofilm can be below the critical pH. In such cases the tooth will continually dissolve because the buffering effect of apatite dissolution and the effect of saliva-derived buffers are insufficient to halt the process.

It can also be reasonably proposed that a unique metabolic interaction between sucrose and the mutans Streptococci can add to the acid pathogenicity of such biofilm. Epidemiologically, caries was rare, even in agricultural societies, before the widespread introduction of sucrose into the diet, despite patterns of relatively frequent eating of other simple carbohydrates. In conditions of strict dietary control in human groups where sucrose is effectively eliminated, caries is as well, despite the frequent ingestion of other sugars.

The metabolic and biochemical link between the high prevalence of caries and the presence of sucrose in the diet is probably the production from sucrose, and therefore the addition to the biofilm environment, of substantial amounts of extracellular polyglucan gel by mutans Streptococci and closely related species. Sucrose is the only substrate from which these bacteria can produce a surrounding polyglucan glycocalyx. The glycocalyx confers a definite selective advantage to the producing bacteria in terms of their survival and reproduction. It also probably changes both the thickness and the ion diffusion biochemistry of the biofilm, increasing its caries pathogenicity.

It is clear that the mutans Streptococci are of major significance in the pathogenesis of dental caries. They are highly acidogenic, highly aciduric, and are the sole bacterial species in biofilm capable of synthesizing extracellular polyglucans from sucrose. Although *S. mutans* is present in most modern human mouths, its proportion can be kept low by restricting both dietary sucrose

and eating frequency. In such mouths, biofilm is very unlikely to contribute to the initiation and progress of caries.

S. mutans infection of the human mouth most commonly occurs during early years by direct or indirect salivary contact with infected parents, siblings or playmates. Parents can be taught how to avoid *S. mutans* infection in their infant children, which can protect the children from the risk of caries in their early years.

Demineralization outweighs remineralization at the ionic level

The demineralization process during a cariogenic challenge can be summarized as follows. When the acidic conditions are severe within the biofilm, the phosphate and bicarbonate buffer ions, diffusing inwards from saliva, can become overwhelmed, leaving un-buffered H^+ ions that percolate into the enamel laminar pores. These unsaturated conditions within the hydration cell, adjacent to the tooth crystal, will cause the HA to dissolve. In this circumstance there will be net mineral loss from the enamel subsurface, for reasons to be described below.

It should be recognized that there are multiple biofilm ecosystems within one mouth. There are very likely to be significant differences in biofilm ecology between interproximal areas, smooth surfaces, fissures and partially emerged teeth. Together with the differences in salivary oral flow, and therefore buffering capacity in different parts of the mouth, these factors will lead to some areas being more at risk of demineralization than others.

Biofilm is also markedly thicker in some locations than others, namely, within pits and fissures, immediately beneath contact areas between teeth and at the tooth–gingiva junction (see Chapter 2). These locations are the commonest sites for caries initiation in all human populations, probably because of the different demineralization–remineralization biochemistry within thick biofilm.

Subsurface demineralization of enamel

It is a consistent finding that the initial lesion in enamel is beneath the enamel surface. This is probably because of the nature of the diffusion and reactions of different ions during the demineralization–remineralization cycle within the biofilm and the enamel, at the micron scale.

During demineralization, hydrogen ions from biofilm may diffuse into enamel more quickly, and to greater depth, than will saliva-derived buffers and calcium and phosphate ions, also from or via biofilm, during remineralization. The enamel surface may therefore tend to remain more intact than the few microns beneath the surface (Figure 1.9).

Incipient subsurface enamel lesions are more porous and contain more water, changing the refractive index, to the extent that the affected area appears as an opaque white, a ‘white spot’ area, rather than being translucent (Figure 1.10). The visual detection of ‘white spot’ areas and steps taken to reverse them by guided remineralization strategies are key stages in the management of early carious lesions, as will be described in Chapter 2.

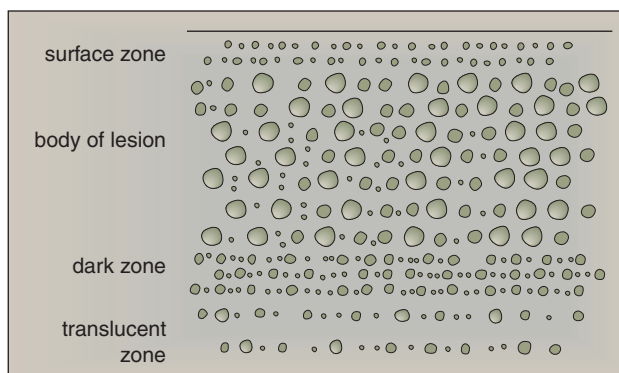


Figure 1.9 Distribution of pore sizes in early caries lesion in enamel. The main initial demineralization is below the enamel surface. Source: [6]. Reproduced with permission from Knowledge Books and Software.



Figure 1.10 Extensive ‘white spot’ lesions, the early and reversible stage of dental caries in enamel. Most probably due to a combination of poor oral hygiene, frequent contact with simple carbohydrates, and limited salivary flow. Courtesy of M.S. Wolff, New York University College of Dentistry, New York, NY. Reproduced with permission from M.S. Wolff.

Pathogenesis of the advancing coronal lesion

What has been described so far is now widely and appropriately termed the ‘reversible carious lesion’ of enamel. While the enamel surface remains relatively intact, there is the potential to remineralize the lesion. However, if the demin–remin imbalance continues, the surface of the incipient lesion will become progressively more porous and will finally collapse through dissolution, and therefore weakening, of the mineral connection between crystals. This collapse will result in surface cavitation. The biofilm in the resultant cavity will change in its microbial composition. There is also less access for the salivary buffer. While with profound biochemical change the progress of the lesion can be *halted* at this stage, because of the loss of a remineralizable matrix, the possibility for complete *reversal* of the lesion is lost.

Once demineralization has progressed through enamel into dentine, bacteria become permanent inhabitants of the lesion. Mutans Streptococci constitute most of the flora in biofilm within resultant defects (~30%), while Lactobacilli, Prevotellae and Bifidobacterium are more associated with the advancing

demineralization front within dentine. Demineralization will still be driven by dietary substrate. The bacteria produce acid to dissolve the hydroxyapatite of deeper dentine, diffusing most readily down the dentinal tubules (Figures 1.11 and 1.12). There will be a region of demineralization in advance of the bacterial front.

As demineralization continues into the dentine, the acid front diffusing ahead of pioneer bacteria triggers a dentine/pulpal complex response. Mineralization may occur in the outer dentinal tubules, including the lateral canals that unite the main tubules. This causes the properties of light transmission through the dentine to be altered, producing what is called a translucent layer. At the same time the deposition of reparative dentine can occur within the pulp chamber.

Bacteria in the cavitated lesion will continue the demineralization process and, usually at a later stage, may cause some breakdown of the collagen structure by excreting proteolytic enzymes. Below this softer, fully demineralized carious dentine will be an advancing front of demineralization caused by acid diffusion, in the order of millimeters ahead of the gross bacterial invasion. There may be a few pioneer bacteria in, or even beyond, the area of demineralization within dentinal tubules, but fortunately these are not clinically relevant, as will be described in detail in Chapter 12.



Figure 1.11 Progress of the carious lesion into dentine. The demineralization front and then bacterial invasion follow the dentinal tubules towards the pulp.

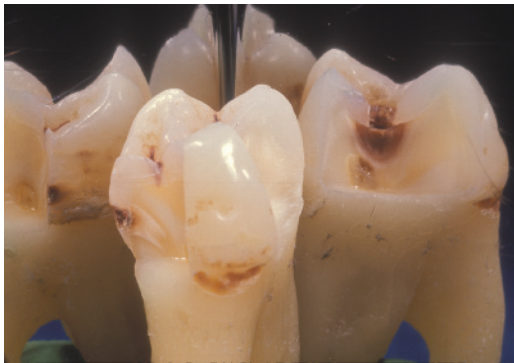


Figure 1.12 Progress into dentine. Note in the proximal lesion of the left the typical penetration towards the pulp. The occlusal lesion seen on the right shows penetration approximately twice as deep as it is wide.

Zones within dentinal caries

Two distinct layers or zones of demineralization can be observed in dentinal caries. These have been identified as the *infected zone* (the outer layers), and the deeper *affected* or partially demineralized zone. The infected zone is characterized by a high level of bacterial contamination, and complete demineralization of the dentine framework leading to total or partial collapse of the dentine tubular structure and intertubular dentine. The affected zone has sufficient mineral content to retain the dentine tubular structure and, importantly, sensitivity, even though the mineral content is partially lost. Providing there is at least 10% of the original level of mineral remaining, remineralization is possible (see also Chapter 12).

The slowly progressing lesion

Under some circumstances, as the lesion advances, the enamel will become progressively undermined and weakened. Collapse of the unsupported enamel may eventually result in a relatively open cavity with good salivary access, even one that becomes relatively self-cleansing, so plaque may not be so readily retained. The caries process may then slow down, leading to the development of a hard leathery floor on the cavity that is very dark and more or less inactive.

At times, slowly advancing lesions allow time for pulpal defences to become clinically significant. These include the deposition of reparative dentine and also the deposition of mineral within the affected dentinal tubules, causing them to become completely obturated. This 'sclerotic' dentine effectively seals the pulp from the advancing lesion. Often such lesions are symptomless.

The rampant lesion

In some biochemical circumstances, caries advances very rapidly. This state is called rampant caries, and is described in detail in Chapter 16. Cavitation in enamel occurs quickly, the dentine floor of the cavity becomes softer, and the pulp will be at risk of irreversible damage because the remineralizing and sclerosing process, which normally reduces the permeability of the tubules, will be unable to keep pace with the advancing lesion. Bacterial by-products can cause the death of the odontoblastic processes and pass through patent tubules, called dead tracts, causing pulpal inflammation and pain.

Root surface caries

Although at the biochemical level the process of demineralization of the root surface is essentially identical to the process of enamel caries, there are important differences that need to be recognized. First among these is that the root surface lesion begins in dentine, rather than within the enamel surface (Figure 1.13).

In enamel caries, the early lesion is identifiable as a 'white spot', whereas the early root surface lesion may be very difficult to detect because there is likely to be minimal or no colour change, but instead only a modification in surface texture or hardness.

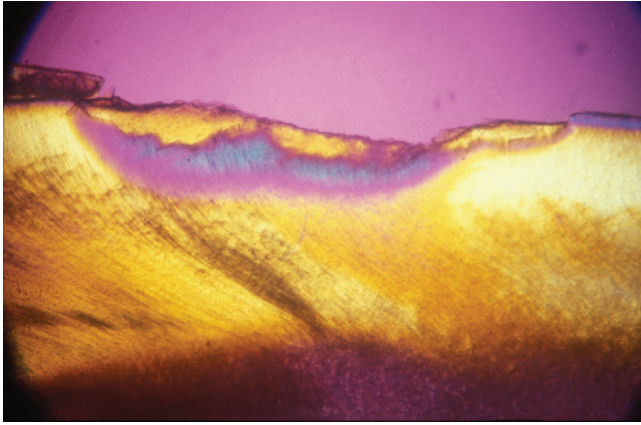


Figure 1.13 Root surface caries in section under polarized light. Note the surface yellow zone of highly demineralized dentine. The purple zone is partly demineralized. Magnification x 35.

The mineral content of root surface dentine is much lower than that of enamel so, when demineralized, it will rapidly expose the collagen matrix, generally retaining much of its protein structure as long as it remains well hydrated. The exposed matrix is susceptible to physical damage but it can readily be remineralized by salivary calcium and phosphate and by fluoride, providing that the causative biochemical circumstances are eliminated and that the demin-remin balance is therefore stabilized. The surface of even quite advanced root caries lesions may therefore be re-hardened through a reduction in eating frequency and the application of topical fluorides or remineralizing solutions.

The enamel is generally not involved in the early stages of root caries but the lesion may extend up and under the cervical margin of the enamel crown as the lesion progresses (Figure 1.14).

The advancing lesion will darken over time through bacterial activity and the uptake of dyes from food. Identification is then easier but it is always difficult to define the full extent of the lesion. As with all dentine caries, there will be an affected zone where

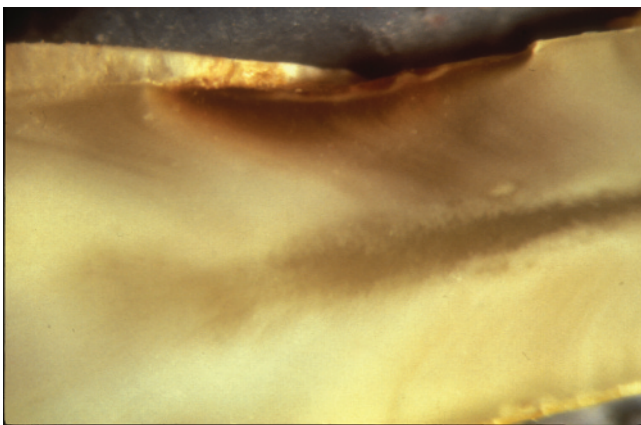


Figure 1.14 Root surface caries in section under transmitted light. Note that the lesion extends laterally under enamel, as well as following the tubules towards the pulp. Magnification x 35.

the demineralization is in advance of the bacterial infection. This will be a softened, demineralized, colourless zone of dentine on the floor of the cavity that should not be removed during cavity debridement because it can be sealed from the oral flora and subsequently remineralized. Sealing the surface assists the natural repair mechanisms and leads to a reduced challenge to the pulp.

Dental Corrosion (Erosion)

Dental corrosion can be defined as the superficial loss of dental hard tissue due to chemical demineralization by acids of non-bacterial origin. Although 'erosion' was the word most commonly used in earlier dental texts to describe the condition, 'corrosion' is a more accurate term for what occurs and will be used here. In materials science, the term 'corrosion-erosion' is also sometimes used for acid-induced dissolution of materials. 'Corrosion' means dissolution or damage by acids, whereas 'erosion' means washing away. There is little doubt that what occurs when teeth are exposed to non-bacterial acid is due to the acid.

In Paleolithic populations, the food consumed, irrespective of the environment, was the main source of acid. Clinical evidence of corrosion, as we know it today, was insignificant. With the advent of farming, apart from an increase in carbohydrate consumption, there was also an increase in acid consumption. Communities learned how to ferment food and drinks from plants and milk, culminating in the current 'modern' lifestyle where consumption of acidic drinks has grown greatly, resulting in the high prevalence of corrosion seen in many societies today. Corrosion can also result from frequent exposure to gastric and other non-dietary acids.

The clinical appearance of corrosion varies. In active corrosion, the whole tooth crown may be affected with a loss of surface definition leading to a 'frosted glass' appearance with loss of prominent enamel ridges as they become rounded off (Figures 1.15 and 1.16). The enamel surface may become relatively



Figure 1.15 Active corrosion-accelerated wear on bicuspid and molar teeth. Note the glazed surface, the loss of micro-anatomical detail and the scooping of the dentine.



Figure 1.16 Active corrosion lesions on the occlusal and buccal of lower premolars. The corrosion was active because there was sensitivity to cold.

concave until the dentine is exposed, whereupon the corrosion accelerates due to the relative lack of mineralization of the dentine. This leads to a 'scooped-out' appearance that often progresses rapidly and can become very deep in relation to the surrounding enamel.

Sources of acid-causing corrosion

The main sources of acid that commonly cause corrosion in modern societies are summarized in Figure 1.17. Although the prevalence of acids from each source varies between individuals, there is little doubt that dietary acids, in particular, the consumption of acidic drinks, are the prime cause of corrosion in contemporary populations.

Extrinsic factors

Acids of extrinsic origin arise from outside the body. Industrial acids can be carried in gaseous form in the air in heavily

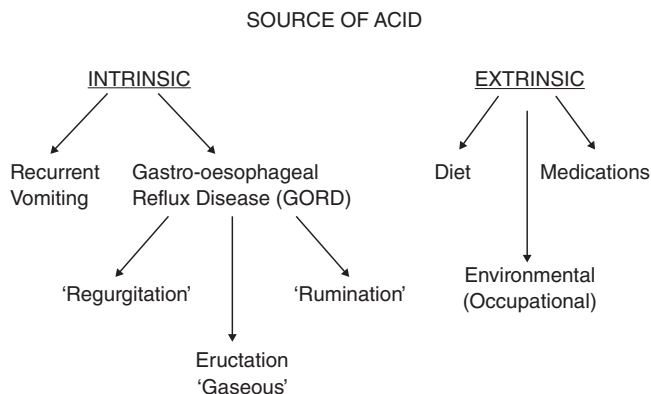


Figure 1.17 Intrinsic and extrinsic sources of acid that enter the oral environment.

polluted areas (e.g. factories) and may cause demineralization of the labial surfaces of anterior teeth, particularly in mouth breathers. Chlorine-treated swimming pools with low pH may also cause considerable damage to regular swimmers. Generally, in such cases, progress of the corrosion may be relatively slow and, therefore, diagnosis may be difficult.

A variety of foods and drinks have a low pH and frequent ingestion may cause problems. For example, low pH cola drinks (including so-called 'diet colas'), cordials and fruit juices may cause corrosion. However, individual variation in the method of consumption of these liquids before swallowing may lead to differing patterns of loss of structure.

Certain medications are also acid in nature and the potential for demineralization must be recognized and patients counselled accordingly. For example, a lack of gastric acid may be compensated for by the prescribed, oral administration of concentrated hydrochloric acid, with advice that it should be taken through a straw or glass tube. Despite this precaution there is still a tendency to force some of the acid into the oral cavity during the act of swallowing. Other examples include asthma medications, especially vapour inhalers or 'puffers'. Puffers not only have a low pH, but also tend to relax the smooth muscle of the gastrointestinal tract leading to the possibility of acid reflux, which can compound the problem.

Intrinsic factors

Generally, intrinsic factors can be subdivided into recurrent vomiting and gastro-oesophageal reflux disease (GORD). GORD can then be further subdivided into three categories: (i) regurgitation, that is when stomach contents reach the mouth but are immediately swallowed again; (ii) rumination, when stomach contents are chewed, then re-swallowed; and (iii) gaseous reflux, also called 'eructation' or 'burping'. Regurgitation and gaseous reflux are common, while rumination occurs only among infants and some bulimics.

Failure of the protective effects of biofilm and saliva

As noted above, there is scarce evidence of corrosion having occurred in hunter-gatherer societies. The physical presence of a biofilm at near-neutral pH, with only exposure to acidic foods and with little or no exposure to simple sugars has protective benefits. So do the buffering systems present in normal and high flow-rate saliva. However, the high acidic strength (low pH) and frequent consumption of many drinks that now form routine parts of the dietary experience in many individuals can have a number of effects, depending on the intensity and frequency of acid exposure:

- The inclusion of acidic drinks on a biofilm that is already continually exposed to frequent contact with fermentable carbohydrates, and which is continually influenced by the presence of sucrose in the diet, will have the effect of further reducing the resting pH. This will tip the balance towards further net mineral loss, thereby increasing the rate of subsurface

demineralization, or if the resting pH is below the critical pH of FA, then rampant dissolution can occur.

- At times of very frequent exposures to acid, the biofilm is partly or completely removed by the acid, leaving the tooth surface more exposed to acid, and therefore at higher risk of demineralization. Although salivary pellicle will re-form on the tooth surface, with frequent drinking of low pH liquids, its effects will be insignificant from the point of view of protection.
- The addition of toothbrushing in this circumstance has the potential to make the situation worse, by removing both the pellicle and softened, eroded tooth substance. Teeth affected in this way are found to be very clean, with no staining and showing all the signs of corrosion described above. The clinical management of corrosion lesions is described in Chapter 4.
- Each of the factors that reduce salivary flow, and therefore reduce the clearance, dilution and buffering effects of saliva, increases the risk and rate of corrosion. These factors have been described above relative to the development and progression of carious lesions, and are described in more detail in Chapter 16.

Mechanical Wear on Tooth Crowns

Mechanical wear as a physiological process

Fossil records, anthropological research and studies in comparative anatomy show that the physiological demands of chewing food have acted on teeth since prehistoric times and were responsible for mechanical wear. These were the selective forces that produced adaptive evolutionary changes, over generations, to the morphology and structure of teeth, and to the physiological function of the stomatognathic system.

In conjunction with long-term evolutionary change, physiological adaptations occur in response to environmental stresses during the life of an individual. Physiological adaptations include production of secondary and tertiary dentine, continual eruption of teeth, changes to masticatory patterns, and remodelling of bone, including alveolar bone and that of the temporomandibular joints. There appears to be a perpetual balance between environmental stress and physiological adaptation. It is only when the body is too slow to adapt, or is unable to adapt, that pathology will become evident.

This biological approach to the oral structures recognizes that they will change throughout life, a view that varies from some past concepts in dental practice. The focus of modern dentistry has for many years been on the treatment of dental caries and periodontal disease, and this has led to professional practice aimed at restoring the broken-down dentition to its original newly-erupted morphology on the assumption that the unworn tooth has the ideal functional form. A variety of geometric concepts of occlusion have evolved over the years and occlusal reconstruction has tended to follow formal guidelines

regardless of the great variability that exists in the architecture of the stomatognathic system within and between populations with different eating patterns, as well as in the same individual over time as teeth naturally wear.

By recognizing progressive change in tooth form as a physiologically dynamic process, premature and unnecessary dental interventions can be avoided.

Abrasion

Abrasion has been described as ‘the wearing of tooth substance that results from friction of exogenous material forced over the surface by incisive, masticatory, and grasping functions’. Within this definition, exogenous material refers to anything foreign to the tooth substance and the most common material forced over tooth surfaces is the food itself. In hunter-gatherer societies, there was not only a natural abrasivity of the food, but sand, grit and foreign material were also incorporated into the food bolus, and other solid objects were held by or forced against the teeth. In our contemporary populations, the food consumed is most often softer, processed and less abrasive, but we must also consider the wear caused by tooth cleaning. Abrasion may therefore occur during mastication, when the teeth are being used as tools, or during tooth cleaning where the foreign body is the toothbrush and the dentifrice.

In general, the action of abrasion from food is not anatomically selective on the tooth surface. In other words, the abrasive influence of a bolus of food occurs on the whole occlusal surface, affecting the cusp tips, cusp inclines and fissures, as well as the occlusal aspects of the buccal and lingual surfaces.

An exception to this lack of specificity may occur when the same two or three teeth are used repeatedly as tools for grasping an object. This may lead to more severe abrasion on these teeth and examples of this type of abrasion may be related to a broad range of occupations and pursuits, from hunting-gathering to pipe smoking (Figure 1.18).



Figure 1.18 Excessive wear on the incisal edge of the upper left central and lateral incisors. The patient had consistently held a pipe between his teeth while working over many years.

An abrasion area produced by food, in contrast to an attrition facet, is generally not well defined because abrasion tends to round off or blunt tooth cusps or cutting edges. In addition, the tooth surface will have a pitted appearance and when dentine is exposed, it may be ‘scooped out’ as it is softer than enamel (Figure 1.19).

Interestingly, dentine exposed by abrasion alone is generally not sensitive because the dentine will probably be covered by a smear layer typical of that seen with other mechanical interference, such as a dental bur. The dentine tubules can be ‘burnished’ by mechanical action, thereby closing them over. This suggests that any dentinal sensitivity on an abraded area may indicate the presence of superimposed acid corrosion. In the presence of acid, the dentinal tubules may be opened through loss of this layer, causing responses to changes in temperature, osmolality and tooth drying. In the case of wedge-shaped cervical lesions caused by the action of toothpaste and toothbrush on acid-softened tooth surfaces, this painful condition is generally called cervical hypersensitivity.

Abrasive dental wear, that is, dental ‘scooping’, is relatively shallow in nature when compared with that of erosion. The ratio of depth to bucco-lingual width is relatively constant for any particular diet [1]. As the enamel rim wears, the dentine will be proportionally scooped out as well. In addition, the maximum depth of dentine loss shifts towards the buccal of the scooped area for the lower posterior teeth and towards the palatal of the upper posterior teeth as the cusps are worn flat and the masticatory stroke becomes broader. There are, however, situations where abrasion will not lead to scooped dentine, such as wear caused by a pipe-stem, because its solid structure and size will have simultaneous contact on the enamel and the dentine.

In Paleolithic societies, abrasive wear was the predominant mechanism resulting from functional demands that changed dental morphology. This caused rapid cusp reduction, broadening the ‘teardrop’ masticatory cycle and progressively changing

the occlusion from what dentists describe as ‘canine-protected’ occlusion to ‘group function’ very early in life. Even though the occlusion progressively changed, anthropologists have considered that teeth remained functional with the ability to crush and cut scissorially from the differential wear occurring between enamel and dentine [2, 3]. That is, the scooped dentine caused by abrasion and resulting in ‘proud’ enamel was responsible for masticatory efficiency. This is universal in nature and exists in herbivorous and omnivorous dentitions of many different species.

The distribution and extent of abrasive wear over the dentition are influenced by many variables, including type of occlusion, diet, lifestyle and age. The type of occlusion is a prime factor in the distribution and pattern of abrasion. As the variability of upper and lower tooth positions is almost limitless, the distribution and pattern of abrasion can also be extremely variable. As a general rule, in an Angle Class 1 molar relationship, with normal anterior overjet and overbite, abrasive wear will occur on the occluso-buccal aspect of the lower teeth and the occluso-palatal aspect of the upper teeth producing an ‘ad-palatium’ occlusal slope. This will normally hold true for the bicuspid and first permanent molars, but the occlusal slope may be reduced to neutral around the second molars, and finally may be negative or ‘ad-linguum’ on the third molars. This occlusal twist that develops on the occlusal surface of posterior teeth with advanced abrasion is called the helicoidal plane [3] and it is typical of hunter-gatherer groups from *Homo habilis* to *Homo sapiens*.

There is a high correlation between age and tooth wear within all populations. Obviously, newly erupted teeth have less wear than those that have been in function for a longer period of time. In general, the older the individual, the more extensive the abrasion, although there will be individuals in modern cultures who show very little wear indeed.

Attrition

The term attrition is used to describe tooth wear caused by tooth-to-tooth contact without the presence of food. It has been defined by Every [2] as ‘wear caused by endogenous material such as microfine particles of enamel prisms caught between two opposing tooth surfaces’. The enamel prisms break off and become caught as the tooth surfaces are forced over one another, producing characteristic parallel striations when viewed microscopically.

The characteristic feature of attrition is the development of a facet, that is, a flat surface with a circumscribed and well-defined border. There will be fine parallel striations in one direction only and within the border of the facet. Every facet will match perfectly with another facet on a tooth in the opposite arch and the parallel striations will lie in the same direction.

In general, incisors and canines show facets with striations that are orientated in an anterior-lateral direction, while facets on posterior teeth show striations that are either transverse (i.e. a bucco-lingual orientation), when on the working side, or



Figure 1.19 Wear on anterior teeth, showing the ‘scooped out’ appearance of dentine. The wear in this case may have been accelerated by frequent contact with acid.

oblique (i.e. running in the direction of the opposite canine), on the non-working side. This general pattern is common among human populations and occurs from lateral mandibular movements, where the mandible may go past the canine edge-to-edge position.

Tooth grinding

In the past, terms such as bruxism and parafunction have been used synonymously to describe persistent tooth grinding and clenching. These activities have been described as pathologic habits that may lead to various cranio-mandibular disorders, and it has been suggested that occlusal interferences, deflective inclines and stress have all acted, alone or in combination, as trigger mechanisms.

When tooth grinding is quantified by the frequency of faceting observed on teeth within the general population, instead of subjective questionnaires, the prevalence is found to be high. In fact, over 90% of people in both hunter-gatherer and industrialized populations show evidence of tooth grinding, as shown in Table 1.2 [4]. Children frequently grind their teeth, and even infants grind their gums prior to tooth emergence. This suggests that tooth grinding is a universal behaviour rather than a habit, because habits are learned.

Sleep studies that propose that tooth grinding (and clenching) are associated with various sleep disorders, parasomnias, neurotransmitter problems, the arousal response or other sleep conditions, can be challenged by referring to the findings of recordings of various physiologic functions. The data in these studies indicate the physiologic behaviour of the fight-or-flight response (e.g. increase in heart rate, increase in muscle activity, changes to the respiratory rate, etc.) rather than any indications of a pathological state. These data suggest that grinding and clenching are associated with physiological processes that are linked to emotions (i.e. dreaming), whether they occur during the day or during the different levels of subconscious states found in sleep. This does not mean that sleep and movement

disorders do not exist, but that they need to be differentiated from tooth grinding.

These physiological data indicate reflex actions or behaviours. Although opinions vary as to the aetiology of tooth grinding and clenching, it is generally accepted that there is a strong association with stress or distress. Interestingly, the word 'behaviour' is slowly entering the scientific literature, together with evidence for a 'grinding' center in the central nervous system.

Thus, tooth grinding should be regarded as a common physiological behaviour of central origin that is related to stress. It is only when stress levels become too high that grinding intensity increases to the point where there is likely to be adaptive changes in the cranio-facial structures, including the muscles and joints. When these structures are too slow to adapt, or fail to adapt, then pathology may become evident in a variety of cranio-mandibular disorders. Recommendations on clinical management of these conditions are given in Chapter 4.

Mechanical Wear as a Pathological Process

The toothbrush-related cervical lesion

Although corrosion alone can cause damage to non-occlusal surfaces, especially near the cervical regions, the clinical appearance of these lesions is typically dish- or saucer-shaped, whether they occur in enamel only or extend into dentine and the tooth roots. An alternative morphology is the more specific notch or larger wedge-shaped lesion that occurs at the cervical margins. These are pathologies found almost exclusively in modern-day societies and, to date, they have not been described in pre-farming societies in the anthropological literature.

Vigorous toothbrushing (especially with a horizontal movement) of acid-softened enamel and dentine still seems to be the primary cause of non-carious cervical lesions, although it may be that abfraction (see immediately below) perpetuates the

Table 1.2 Facet frequencies of two populations

Facet frequencies	n	M	P	C	I	EMM
Australian Aborigines (hunter-gatherers)	59	7	67	93	96	97
Australian population (total)	400	84	75	97	97	88
0–10 yrs	11	64	91	82	100	100
11–20 yrs	52	79	60	94	94	85
21–30 yrs	110	81	69	95	95	87
31–40 yrs	119	87	76	99	96	83
41–50 yrs	74	88	84	99	100	96
51–60 yrs	24	88	92	100	100	83
61–73 yrs	10	90	100	100	100	90

Note: EMM = extreme lateral mandibular movement past the canine edge-to-edge.

problem. To date, the following evidence supports the tooth-brushing theory:

- The wedge-shaped lesions have been reproduced on natural teeth in the laboratory using a toothbrush (Figure 1.20). They occur more readily in the presence of a dentifrice and very readily in the presence of dentifrice gels that are mildly acidic. Acid in the dentifrice aids in stain removal.
- Teeth that have not been exposed to occlusal load due to lack of opposing teeth have been shown to develop these lesions (Figure 1.21).
- These lesions have not been recorded in skeletal material in pre-contemporary, hunter-gatherer dentitions that showed considerable wear from heavy functional demands.
- Microwear detail of these lesions shows horizontal abrasive scratch marks in the vast majority of cases (almost 100%) and also evidence of corrosion.
- It has been demonstrated that well-mineralized tooth enamel is harder than abrasive in dentifrice, but the acid-softened surface layer of enamel is not and therefore should not be abraded by brushing until the surface is remineralized. Acids such as citric acid in orange juice can soften the surface of enamel by few microns in minutes, while it takes in the order of 12 hours for the enamel to harden. It is reasonable to propose that brushing teeth using dentifrice during the hours after eating or drinking strongly acid materials is likely to accelerate toothbrush abrasion.



Figure 1.20 A 'wedge-shaped' lesion on the cervical margin of an extracted tooth, produced by a toothbrush and toothpaste in the laboratory.



Figure 1.21 A lesion on an upper bicuspid has developed over the last 5–6 years, yet the lower teeth that would otherwise be opposing have been missing for 50 years. The cause is more likely acid-accelerated toothbrush and paste abrasive wear than abfraction.

Acid-accelerated wear

Although wear can be considered a physiological process, the same extreme circumstances of exposure to strong acid that render tooth surfaces sufficiently soft that they can be worn away by dentifrice abrasive can soften the occlusal surfaces of teeth, also resulting in accelerated wear. The strong acid may be of extrinsic origin, from acidic drinks or industrial acid, or it can be intrinsic, from regurgitated gastric acid. This can cause distress to patients as the appearance of their anterior teeth, in particular, changes (Figure 1.22). Such individuals gain little comfort from an explanation of the 'natural' nature of the condition, and they usually request assistance in decreasing or eliminating the loss of structure.



Figure 1.22 A combination of extreme abrasion and erosion on the labial of the upper anteriors, probably resulting from years of aggressive brushing with dentifrice while the oral pH was very low.

As with corrosion and 'toothbrush abrasion', the resolution of the problem can be simple. First, to decrease the frequency of contact with corrosive dietary acid. Second, to maximize the potential for remineralization during the hours after acid contact through optimal salivary flow and increased exposure to fluoride.

Abfraction

Although toothbrush abrasion has for many years been considered responsible for all wedge-shaped lesions observed on labial and buccal surfaces of teeth and described above, there is growing evidence that excessive buccal and lingual forces on teeth may be responsible for some of these lesions. This concept, termed 'abfraction', proposes that flexure of the tooth at the cervical margin while under load is responsible for the progressive breakdown of the brittle dental tissues (Figure 1.23).

If a cusp remains under load at the beginning or end of a masticatory cycle, there is a possibility of flexure or compression at the cervical margins, which may lead to dislocation of enamel and/or dentine at the point of rotation. Proponents of the theory point to a very high correlation between the presence of wear facets on cusp inclines related to the cervical lesions and the lesions themselves. Coupled with this, it is suggested that the effects of acid can enhance this damage. Theoretical computerized 'finite element analyses' confirm that stresses can occur at the cervical margins of teeth, although this does not of course confirm 'causation'.

Tooth fracture, cusp fracture and enamel flaking

Cusp and tooth fracture from functional demands is a relatively common occurrence in heavily restored teeth, as is described in detail in Chapter 19.

Enamel flaking is another form of tooth loss that should be noted. Slivers of enamel of various sizes may fracture from the incisal edges of anterior teeth, resulting from episodes of tooth

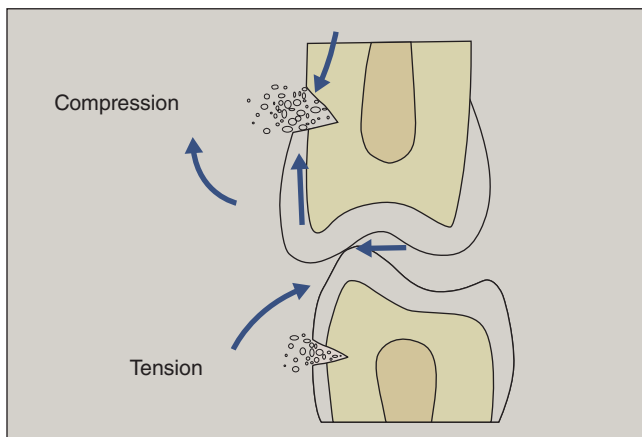


Figure 1.23 Abfraction is thought to result from undue load on relatively flexible teeth. It may result from either compression or tension as shown.

grinding and the pattern reflects the direction of the mandible during the forceful phase of the grinding stroke. As described above, the micro-wear detail evident on the dental arches represents the blueprint produced by a lateral mandibular movement where the mandible starts from maximum intercuspation and moves outwards past the canine edge-to-edge. This produces a pattern of enamel flaking affecting the labial incisal edges of the upper incisor teeth and the lingual incisal edges of the lower incisors (Figure 1.24).

Extreme lateral grinding patterns extending past the canine edge-to-edge position are common (Table 1.2). These extreme positions cannot be achieved voluntarily by patients without discomfort or strain, but it can be shown that the wear facets match perfectly. This suggests that these extreme positions may be attained during sleep where the body's protective reflexes are 'turned off'. The forces applied during such movements can at times be relatively high and explain not only enamel chipping, but failure of labial veneers, cracks in porcelain crowns and fracture of cusps.

Although it is possible for an unrestored tooth to fracture during tooth grinding, it is far more common in teeth weakened by the placement of restorations. Generally, it is the upper buccal cusps and the lower lingual cusps that fracture in heavily restored teeth. This supports the suggestion that extreme lateral mandibular movements during grinding are a common cause for such fractures. Of course, any weakened cusp can fracture during mastication.

As the patient ages, teeth develop minor cracks in the enamel that are usually repaired by precipitation of salivary pellicle followed by mineral deposition. However, if the tooth is subject to heavy occlusal load, the crack can propagate through to the dentine. Movement of the cusp under function may then be extremely painful due to hydraulic stimulation of odontoblast



Figure 1.24 Extreme lateral grinding movement past the canine edge-to-edge leading to enamel chipping. The facets are distinct and the wide bucco-lingual groove corresponds to the upper canine. The patient is an emotionally stressed 16-year-old.

sensory nerve receptors. Treatment involves identifying, protecting and strengthening the cusp.

Crown fracture

The crowns of anterior teeth are most at risk from extrinsic forces such as direct trauma. The main predisposing factors are the age of the patient and the tooth position.

From the time of emergence of the permanent anterior teeth to the late teen years, there is an interplay between what may be considered immature physical activities, such as fighting and rough play, with immature facial structures. Teeth that tend to protrude are therefore at higher risk of damage.

In the older patient, the presence of caries, restorations, erosion, abrasion or attrition may have already weakened crown structure, in which case normal masticatory function or even a minor blow may lead to loss of part or all of a crown. Both crowns and roots are at increased risk of fracture in endodontically treated teeth, for reasons that are not understood.

Note

- 1 In this book, the terms 'biofilm' and 'plaque' will be used synonymously to describe the structures created by proteins and glycoproteins, micro-organisms, extracellular polymers, fluid and ions that originate both from bacteria and saliva that accumulate on tooth surfaces.

Bibliography

- 1 Kaidonis, J.A. (2008) Tooth wear: the view of the anthropologist. *Clinical Oral Investigations*, **12** (S1), 521–6.
- 2 Every, R.G. (1970) Sharpness of teeth in man and other primates. *Postilla*, **143**, 1–30.
- 3 Richards, L.C. and Brown, T. (1986) Development of the helicoidal plane. *Human Evolution*, **1** (5), 385–98.
- 4 Kaidonis, J.A., Richards, L.C. and Townsend, G.C. (1993) Nature and frequency of dental wear facets in an Australian Aboriginal population. *Journal of Oral Rehabilitation*, **20**, 333–40.

- 5 Every, R.G. (1960) The significance of extreme mandibular movements. *The Lancet*, **276** (7140), 37–8.
- 6 Mount, G.J. and Hume, W.R. (2005) *Preservation and Restoration of Tooth Structure*, 2nd edn, Knowledge Books and Software, Varsity Lakes, Queensland, Australia.

Further Reading

- Addler, C.J., Dobney, K., Weyrich, L.S. *et al.* (2013) Sequencing ancient calcified dental plaque shows changes in oral microbiota with dietary shifts of the Neolithic and Industrial Revolutions. *Nature Genetics*, **45** (4), 450–5.
- Eakle, W.S. (2012) Commentary. Abfraction, abrasion, biocorrosion, and the enigma of noncarious cervical lesions: a 20-year perspective. *Journal of Esthetic and Restorative Dentistry*, **24**, 24–5.
- Harris, R. (1963) Biology of the children of Hopewood House, Bowral, Australia. 4. Observations on dental-caries experience extending over five years (1957–61). *Journal of Dental Research*, **42**, 1387–99.
- Kaidonis, J. and Townsend, G.C. (2016). The 'sialo-microbial-dental complex' in oral health and disease. *Annals of Anatomy - Anatomischer Anzeiger*, **203**, 85–15.
- Lobbezoo, F. and Naeije, M. (2001) Bruxism is mainly regulated centrally, not peripherally. *Journal of Oral Rehabilitation*, **28** (12), 1085–91.
- Marthaler, T.M. and Froesch, E.R. (1967) Hereditary fructose intolerance: dental status of eight patients. *British Dental Journal*, **123**, 597–9.
- Nyvad, B. and Fejerskov, O. (1982) Root surface caries: histology and microbiological features and clinical applications, *International Dental Journal*, **32**, 312–26.
- Silverstein, S.J., Knapp, J.F., Kircos, L. and Edwards, H. (1983) Dental caries prevalence in children with a diet free of refined sugar. *American Journal of Public Health*, **73**, 1196–9.
- Takahashi, N. and Nyvad, B. (2011) The role of bacteria in the caries process: ecological perspectives. *Journal of Dental Research*, **90** (3), 294–303.

