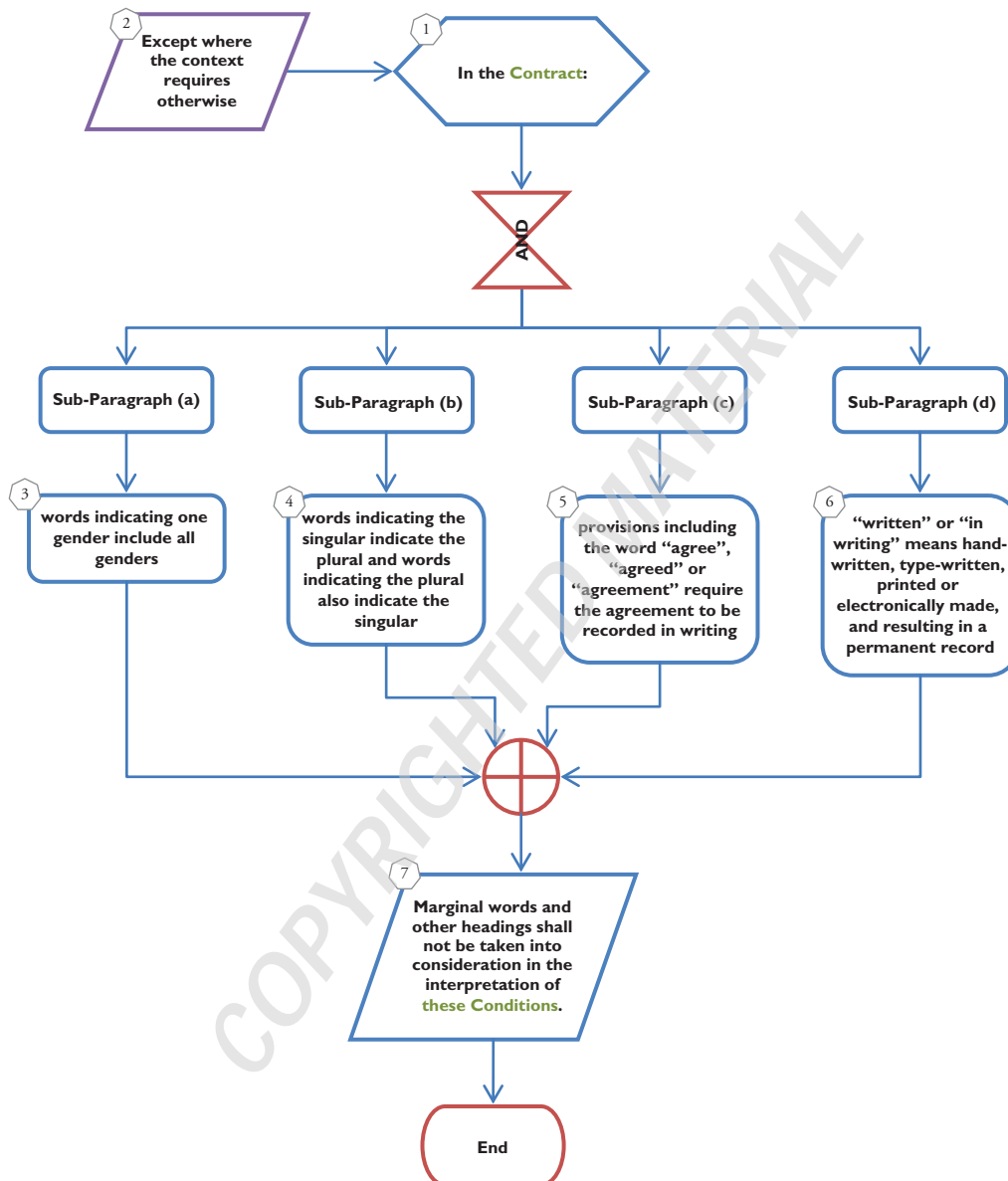


# 1

## General Provisions\*

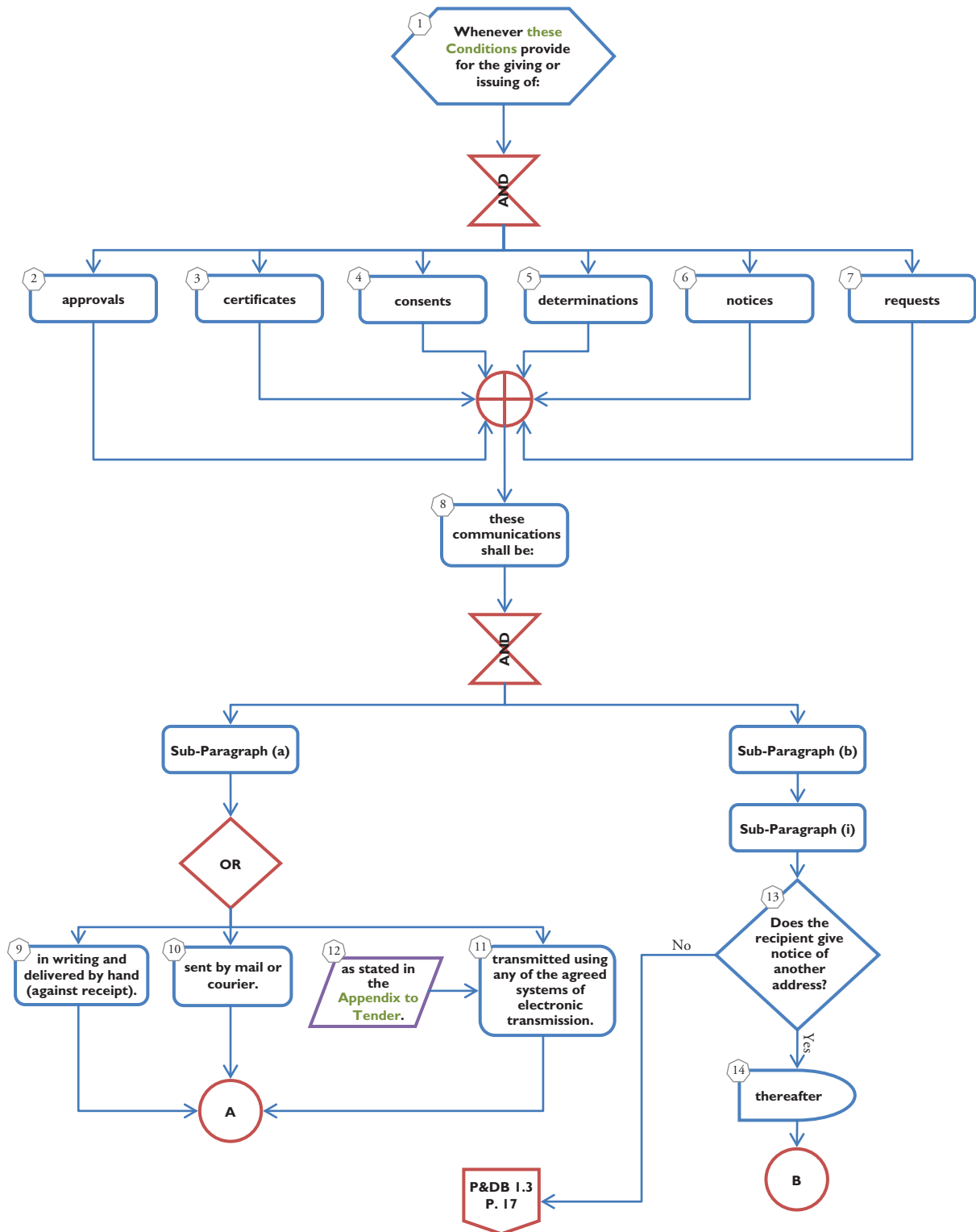
### 1.2 Interpretation†



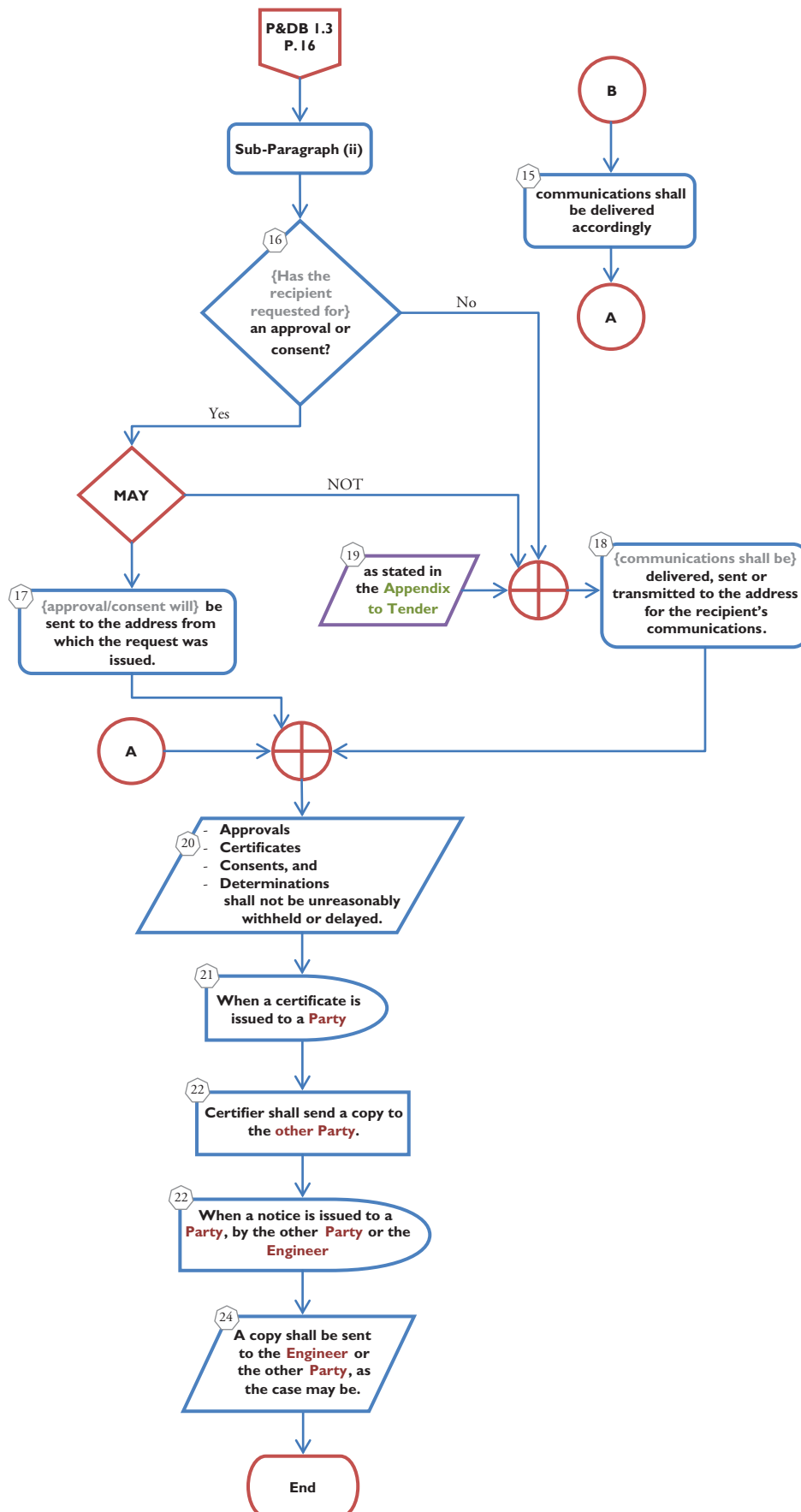
\* The first sub-clause of Clause 1 consists of pure definitions which are not, in essence, meant to be shown on diagrams in the concept-flow technique.

† To read the original text of this sub-clause, please refer to: International Federation of Consulting Engineers (1999) 1.2 Interpretation, in: *Conditions of Contract for Plant and Design-Build for Electrical and Mechanical Plant and for Building and Engineering Works Designed by the Contractor*. Geneva: FIDIC, p. 5.

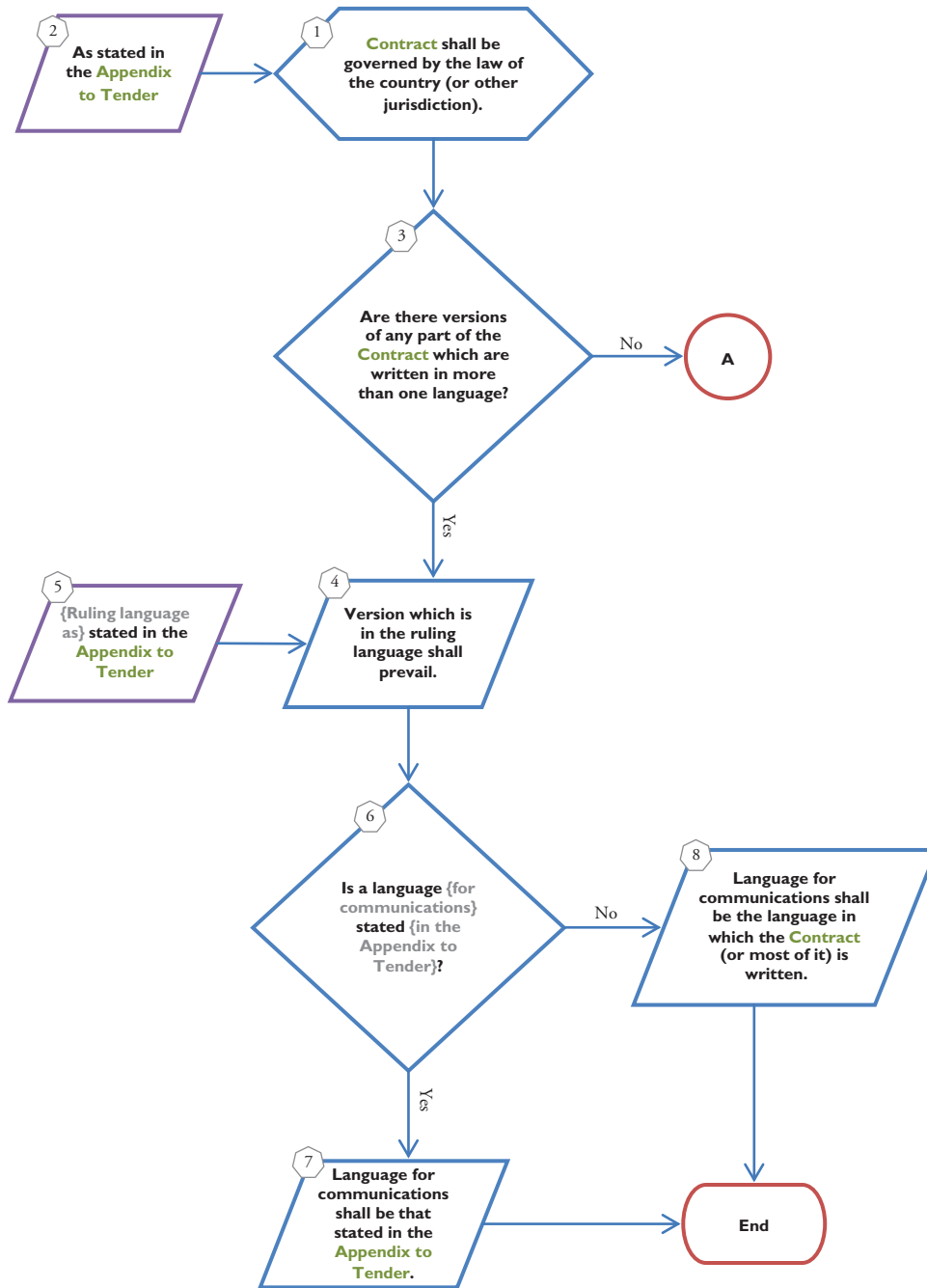
### 1.3 Communications\*



\* To read the original text of this sub-clause, please refer to: International Federation of Consulting Engineers (1999) 1.3 Communications, in: *Conditions of Contract for Plant and Design-Build for Electrical and Mechanical Plant and for Building and Engineering Works Designed by the Contractor*. Geneva: FIDIC, p. 5.

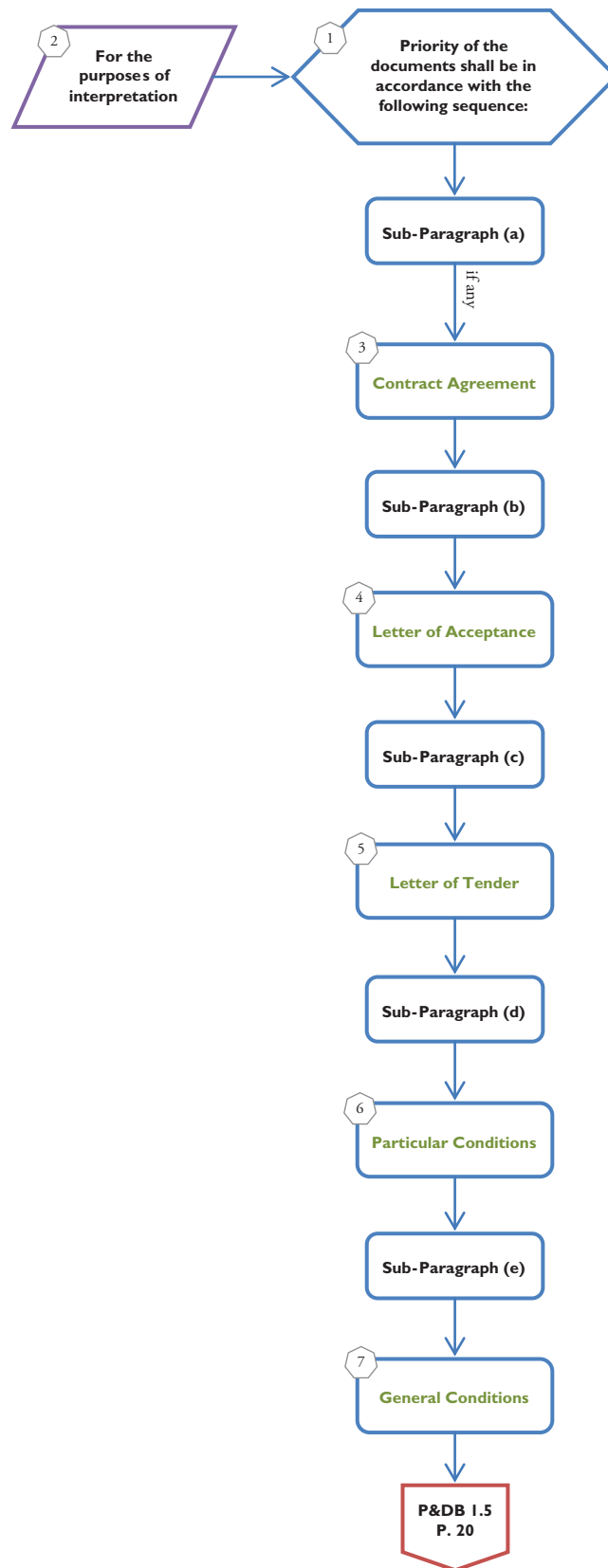


### 1.4 Law and Language\*

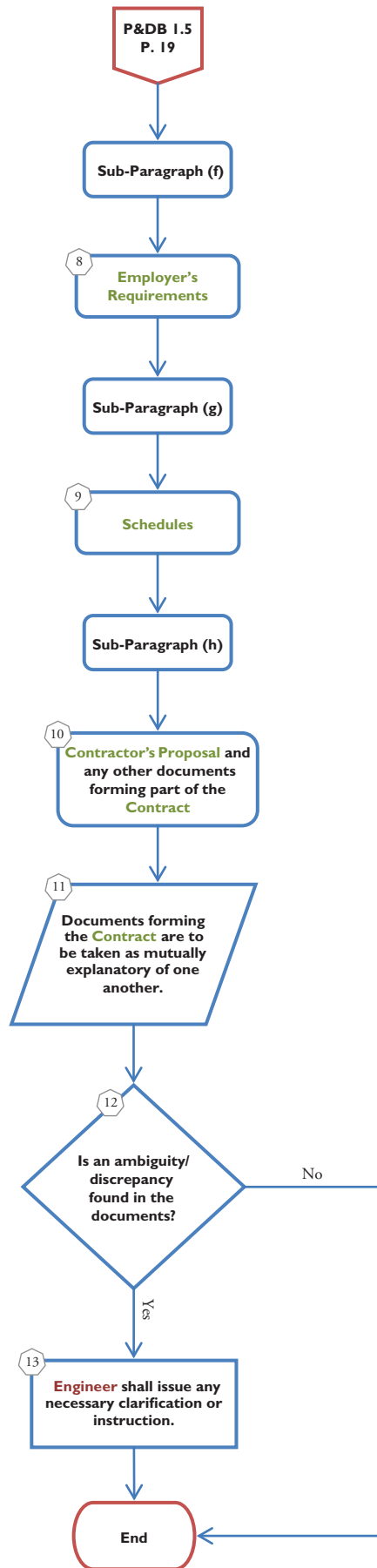


\* To read the original text of this sub-clause, please refer to: International Federation of Consulting Engineers (1999) 1.4 Law and language, in: *Conditions of Contract for Plant and Design-Build for Electrical and Mechanical Plant and for Building and Engineering Works Designed by the Contractor*. Geneva: FIDIC, pp. 5–6.

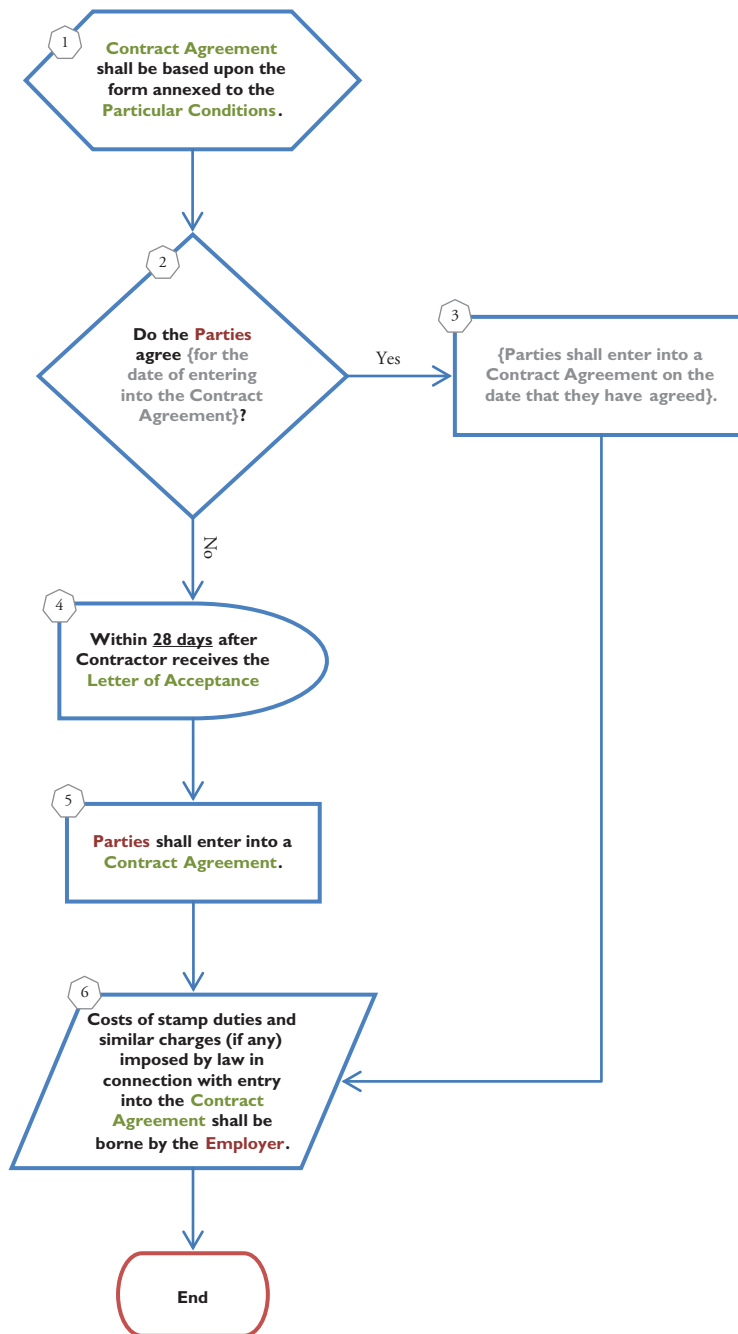
### 1.5 Priority of Documents\*



\* To read the original text of this sub-clause, please refer to: International Federation of Consulting Engineers (1999) 1.5 Priority of documents, in: *Conditions of Contract for Plant and Design-Build for Electrical and Mechanical Plant and for Building and Engineering Works Designed by the Contractor*. Geneva: FIDIC, p. 6.

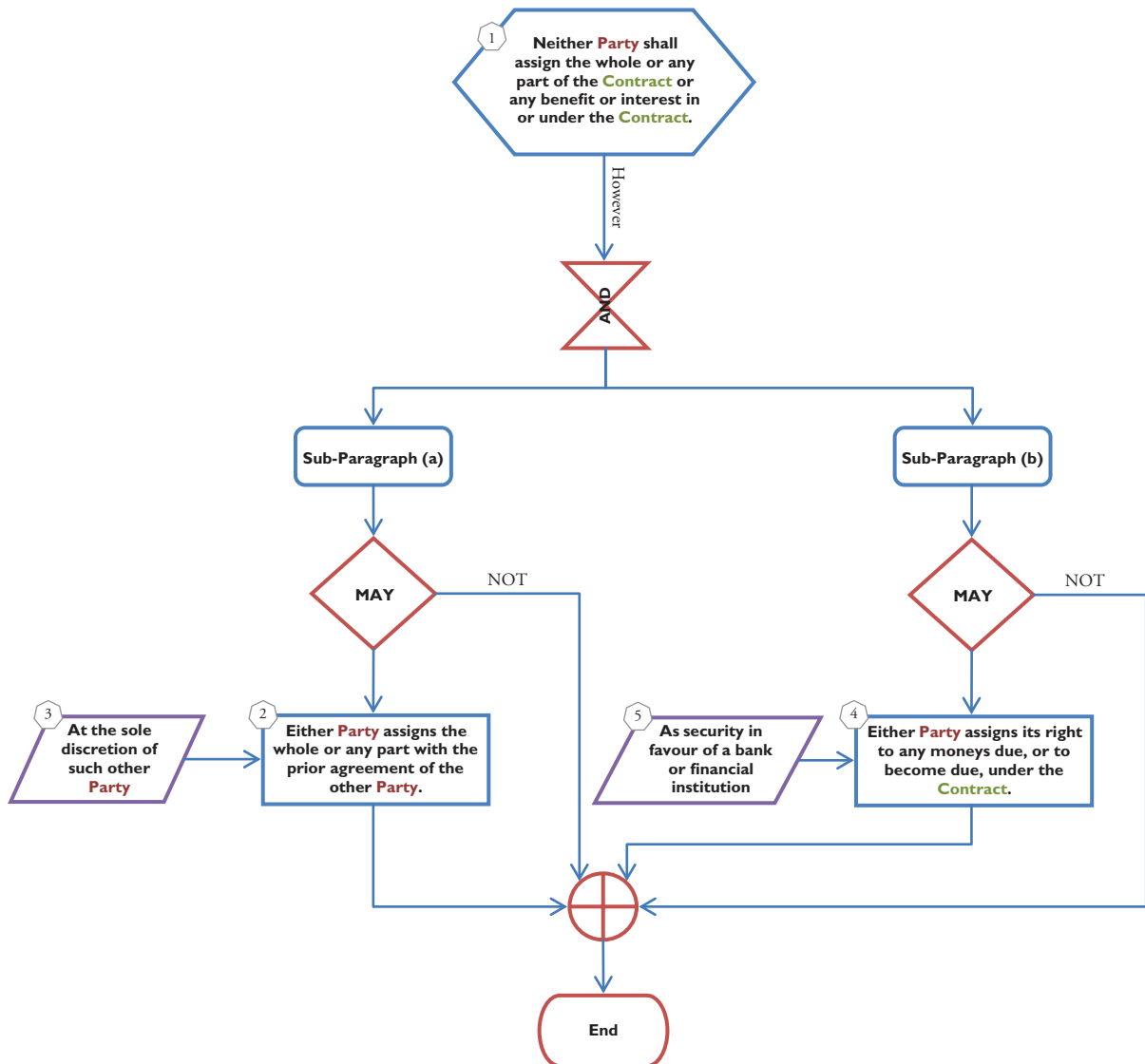


### 1.6 Contract Agreement\*



\* To read the original text of this sub-clause, please refer to: International Federation of Consulting Engineers (1999) 1.6 Contract agreement, in: *Conditions of Contract for Plant and Design-Build for Electrical and Mechanical Plant and for Building and Engineering Works Designed by the Contractor*. Geneva: FIDIC, p. 6.

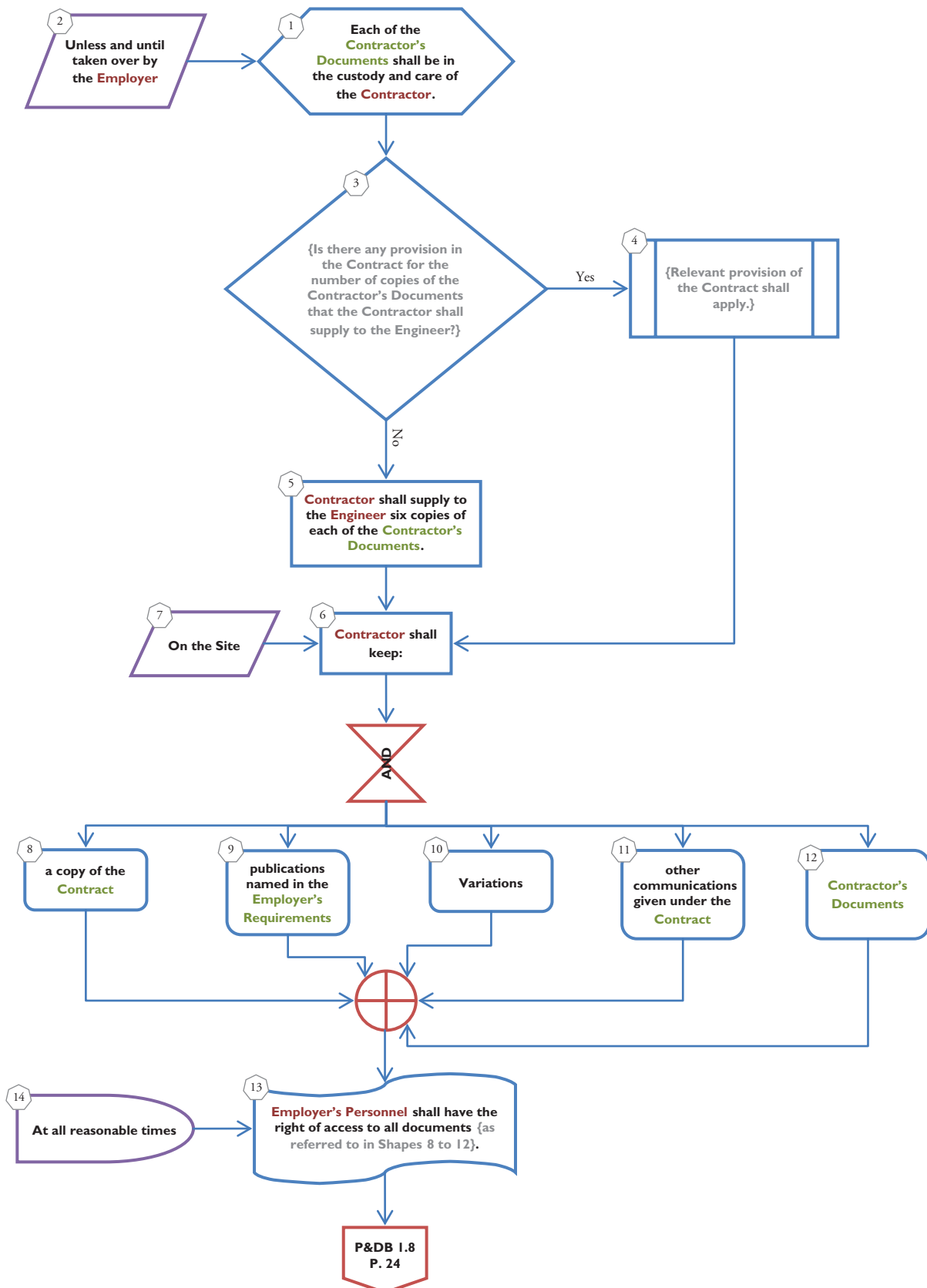
### 1.7 Assignment\*



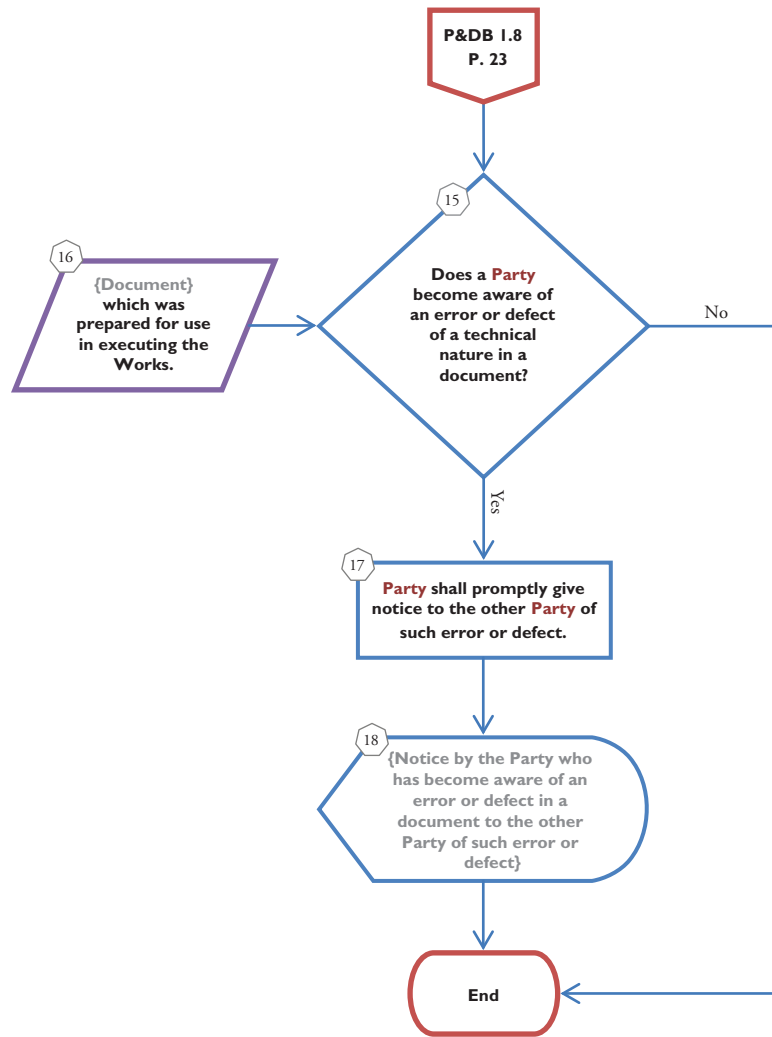
\* To read the original text of this sub-clause, please refer to: International Federation of Consulting Engineers (1999) 1.7 Assignment, in: *Conditions of Contract for Plant and Design-Build for Electrical and Mechanical Plant and for Building and Engineering Works Designed by the Contractor*. Geneva: FIDIC, p. 6.



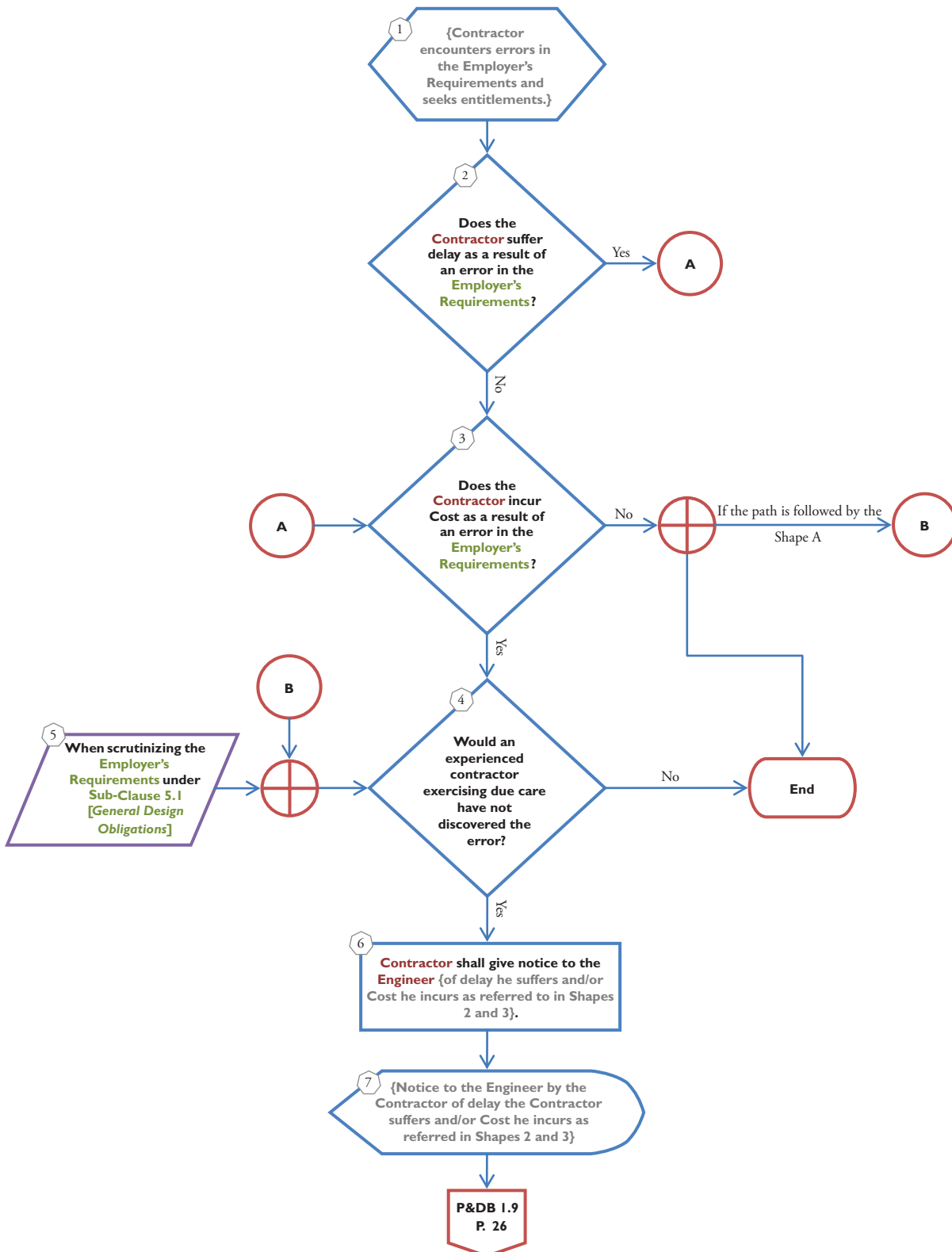
### 1.8 Care and Supply of Documents \*



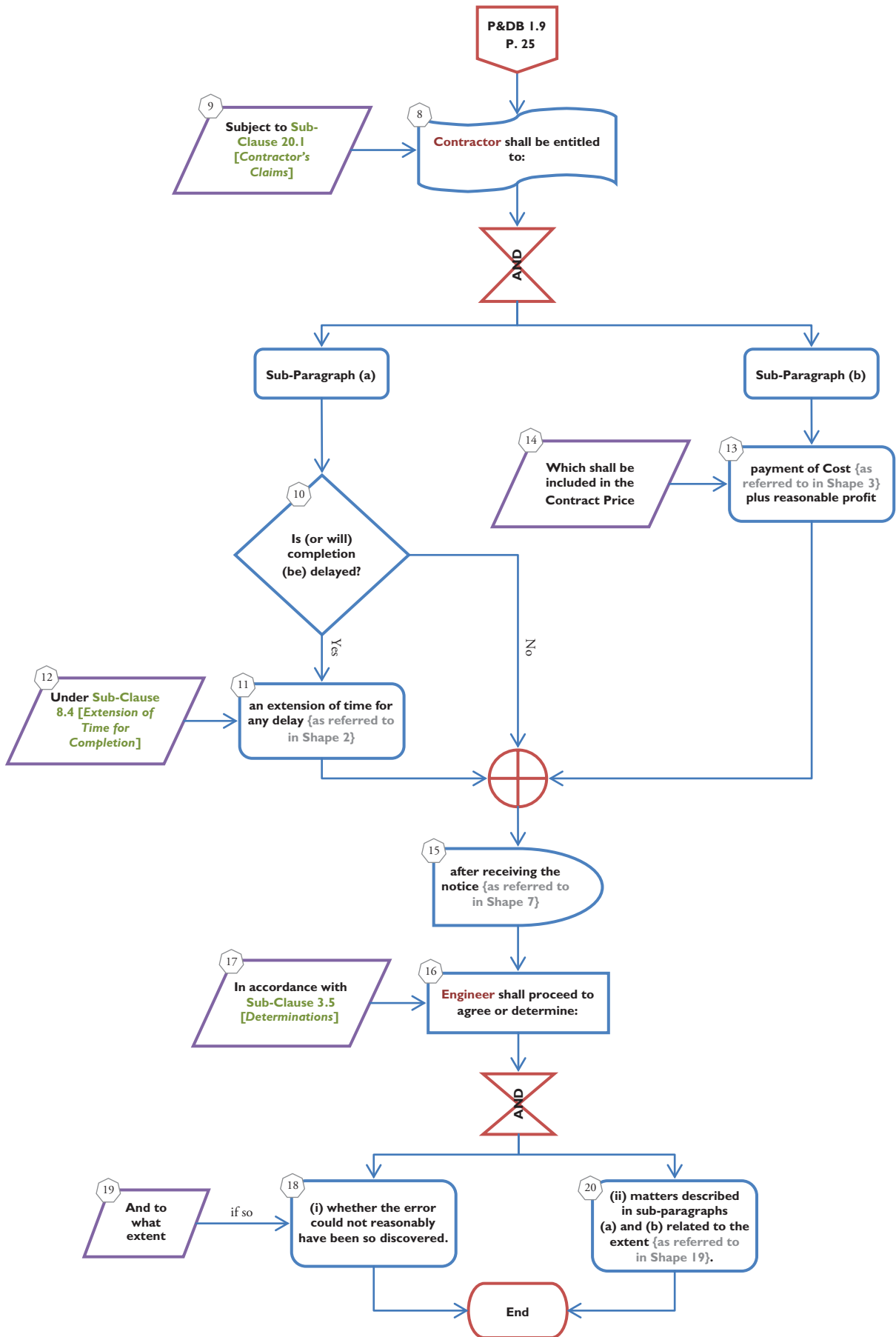
\* To read the original text of this sub-clause, please refer to: International Federation of Consulting Engineers. (1999) 1.8 Care and supply of documents, in: *Conditions of Contract for Plant and Design-Build for Electrical and Mechanical Plant and for Building and Engineering Works Designed by the Contractor*. Geneva: FIDIC, p. 6.



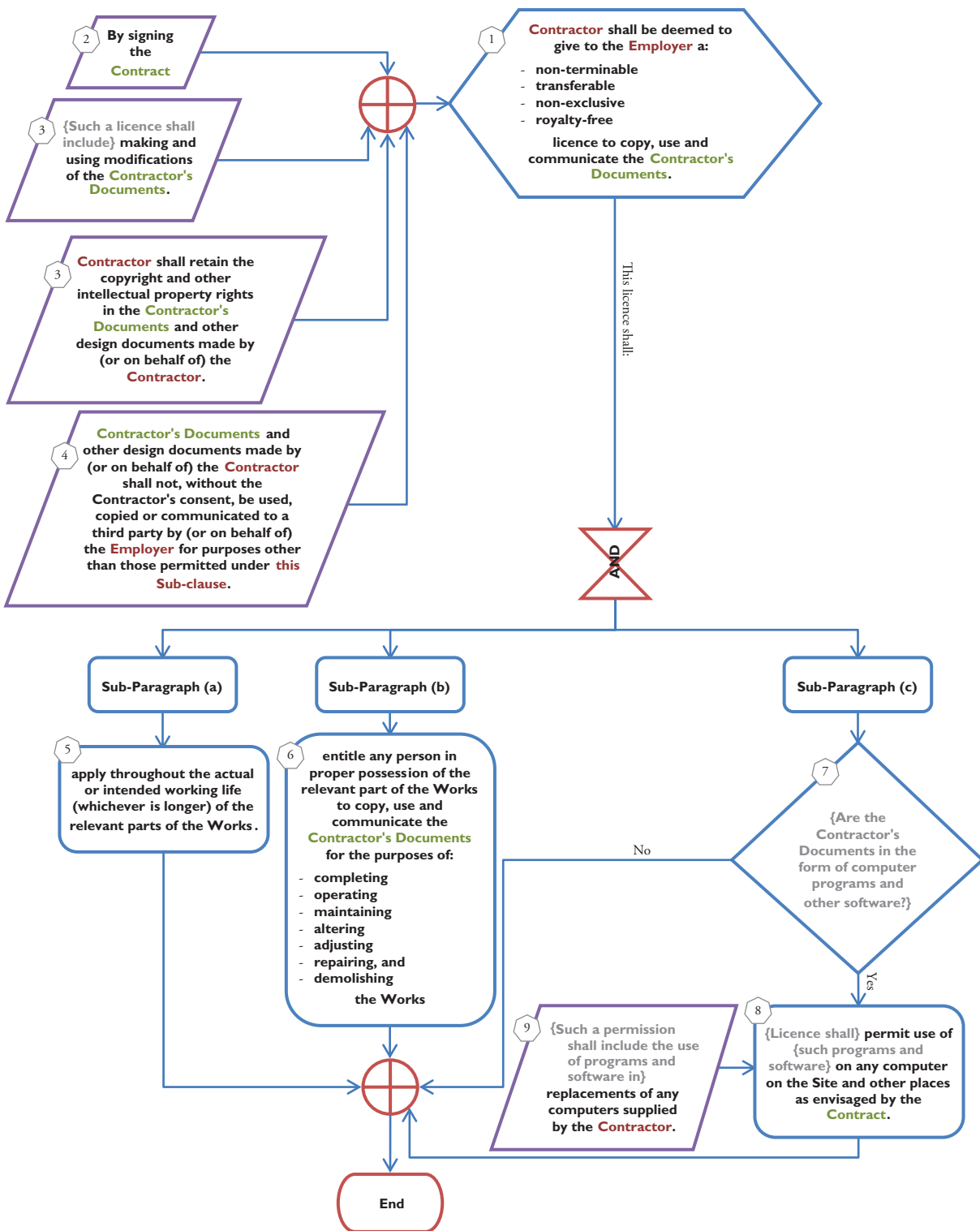
**1.9 Errors in the Employer’s Requirements\***



\* To read the original text of this sub-clause, please refer to: International Federation of Consulting Engineers (1999) 1.9 Errors in the employer’s requirements, in: *Conditions of Contract for Plant and Design-Build for Electrical and Mechanical Plant and for Building and Engineering Works Designed by the Contractor*. Geneva: FIDIC, p. 7.

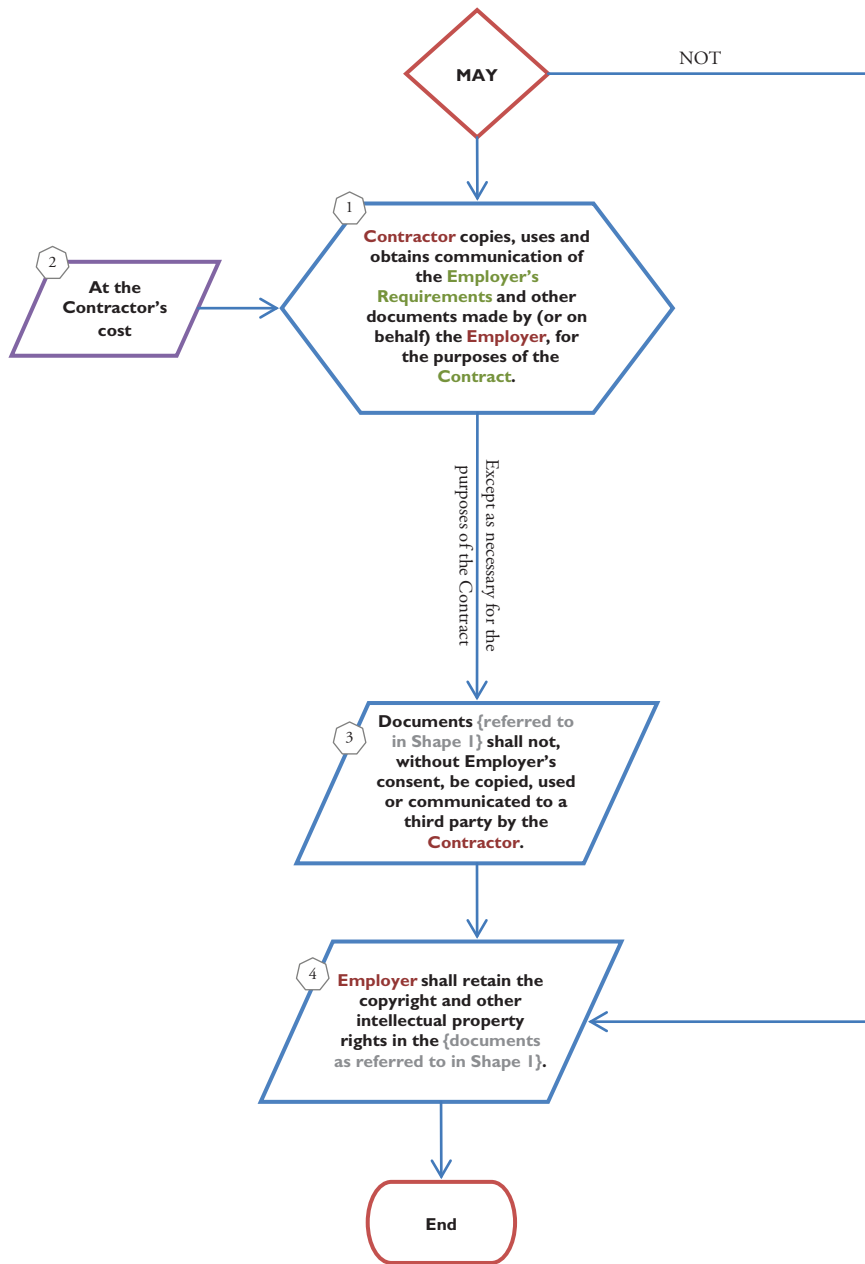


### 1.10 Employer's Use of Contractor's Documents \*



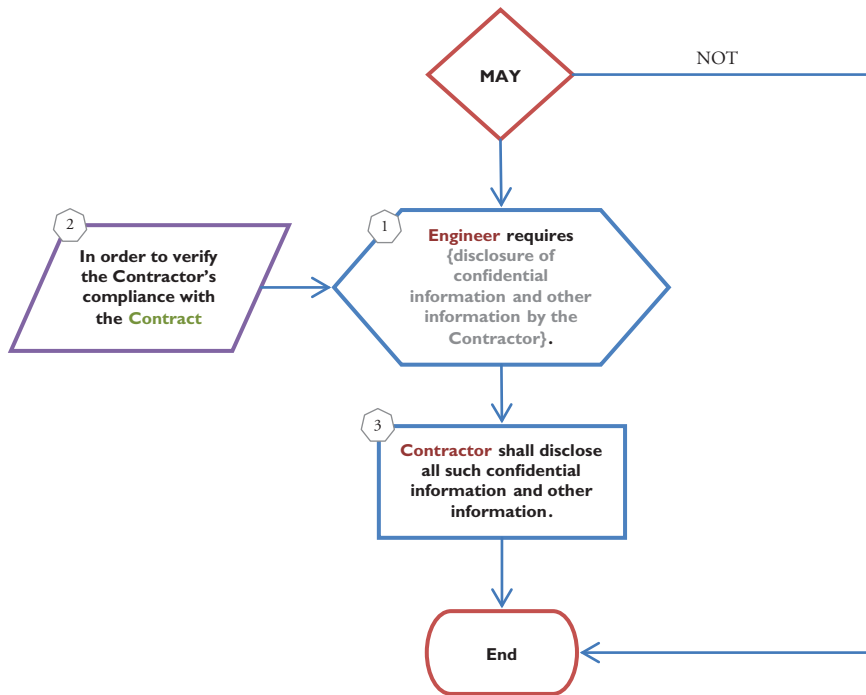
\* To read the original text of this sub-clause, please refer to: International Federation of Consulting Engineers (1999) 1.10 Employer's use of contractor's documents, in: *Conditions of Contract for Plant and Design-Build for Electrical and Mechanical Plant and for Building and Engineering Works Designed by the Contractor*. Geneva: FIDIC, p. 7.

### 1.11 Contractor's Use of Employer's Documents\*



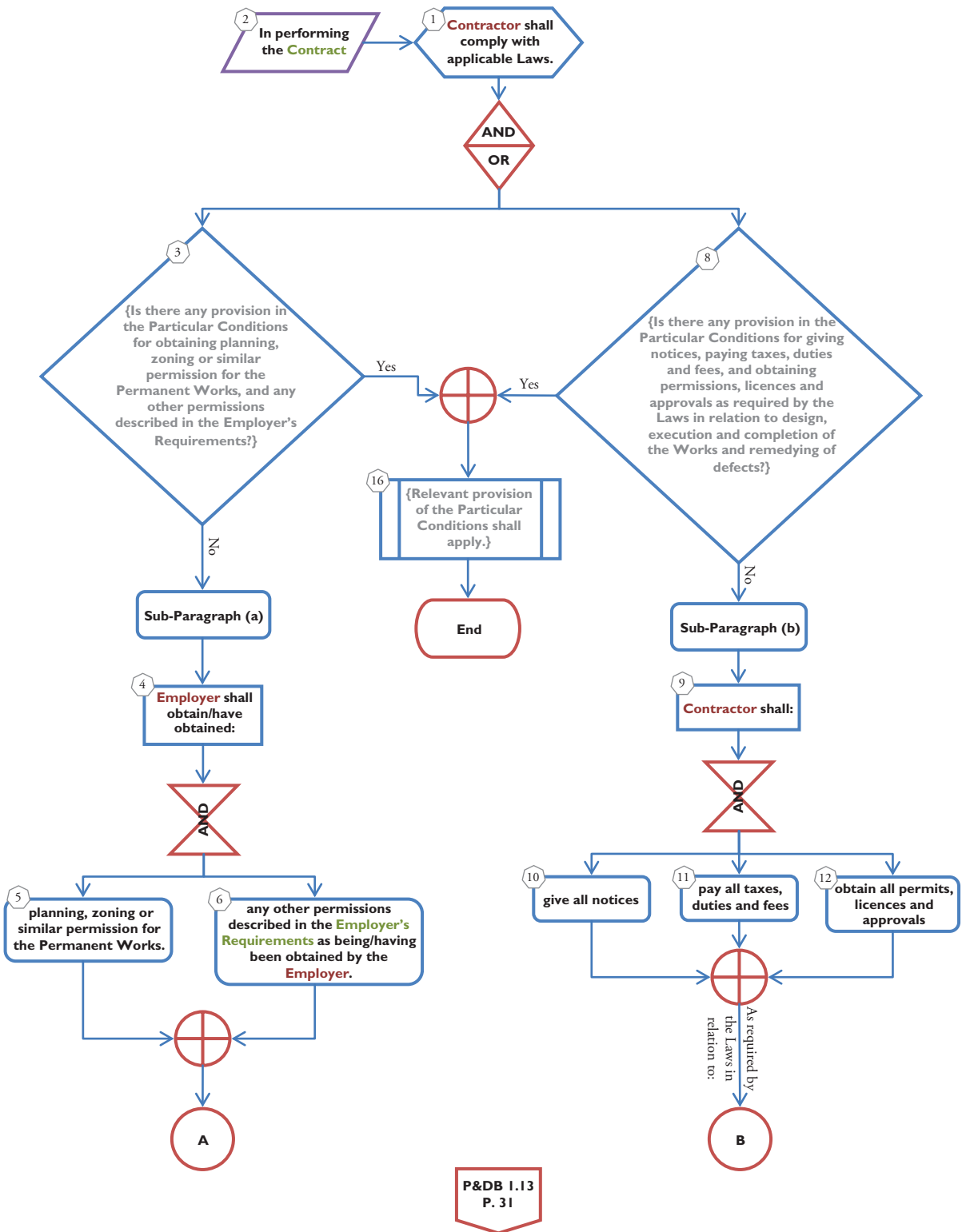
\* To read the original text of this sub-clause, please refer to: International Federation of Consulting Engineers (1999) 1.11 Contractor's use of employer's documents, in: *Conditions of Contract for Plant and Design-Build for Electrical and Mechanical Plant and for Building and Engineering Works Designed by the Contractor*. Geneva: FIDIC, p. 7.

**1.12 Confidential Details\***



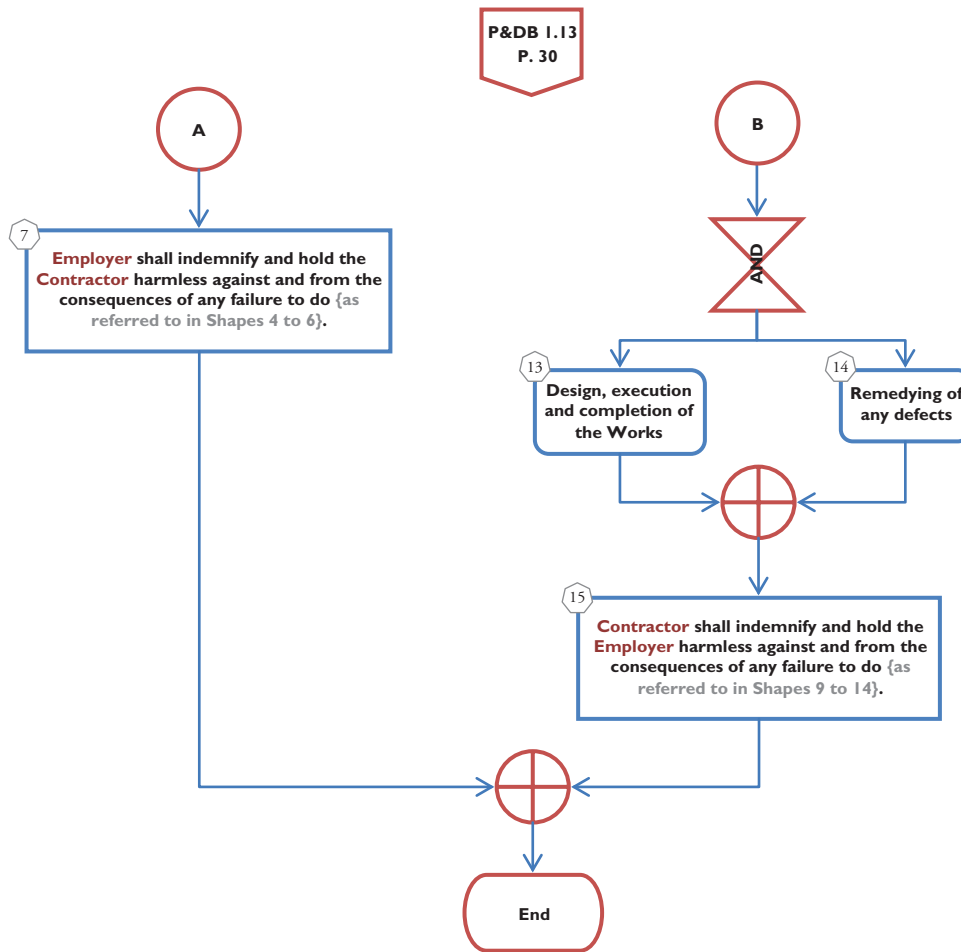
\* To read the original text of this sub-clause, please refer to: International Federation of Consulting Engineers (1999) 1.12 Confidential details, in: *Conditions of Contract for Plant and Design-Build for Electrical and Mechanical Plant and for Building and Engineering Works Designed by the Contractor*. Geneva: FIDIC, p. 7.

### 1.13 Compliance with Laws\*



\* To read the original text of this sub-clause, please refer to: International Federation of Consulting Engineers. (1999) 1.13 Compliance with laws, in: *Conditions of Contract for Plant and Design-Build for Electrical and Mechanical Plant and for Building and Engineering Works Designed by the Contractor*. Geneva: FIDIC, p. 8.



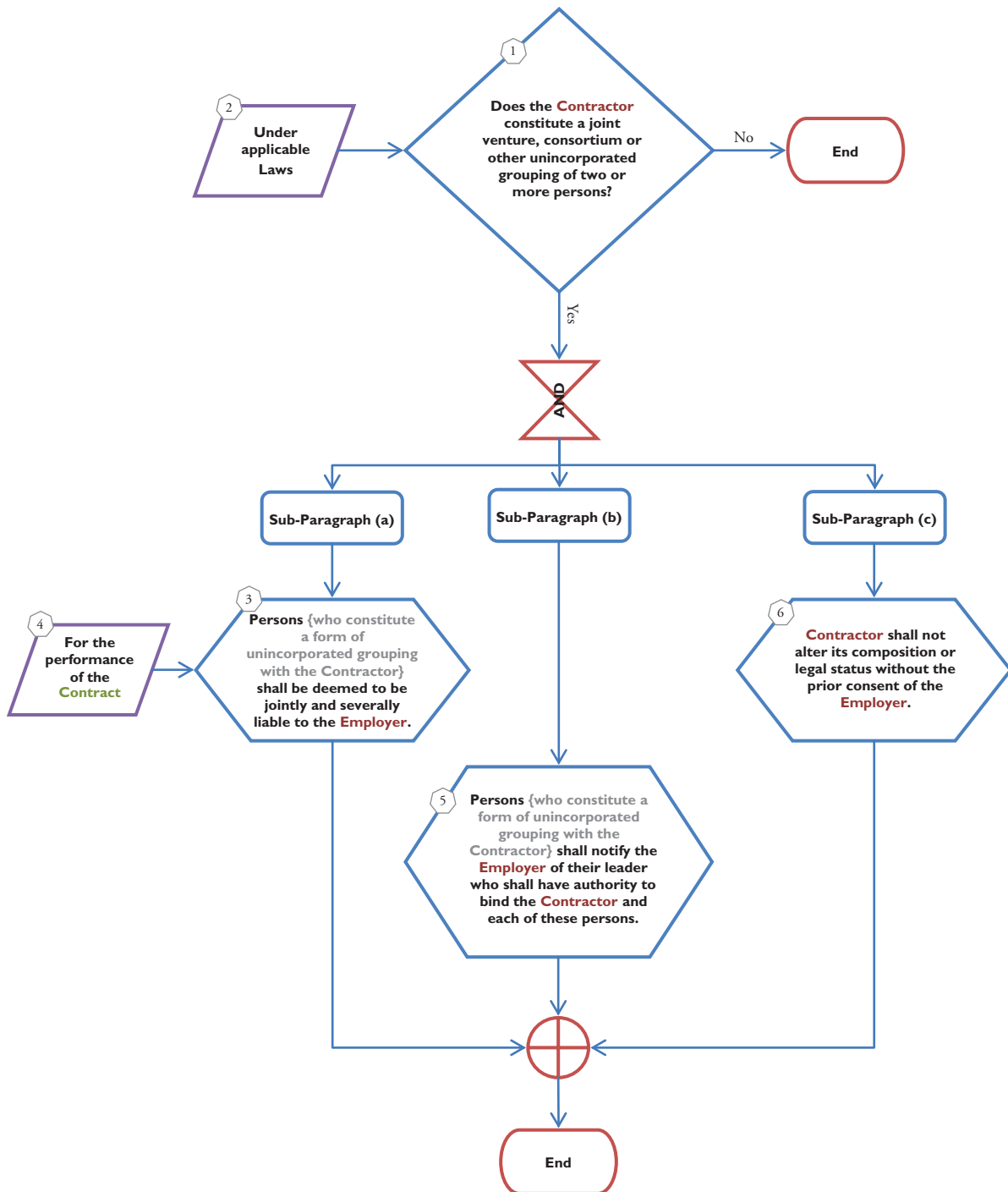


P&DB I.13  
P. 30

**Authors' note**

In the Particular Conditions, there may be provisions only for obtaining permissions of planning, zoning and the like (matters followed after Sub-Paragraph (a)), or, in the same vein, only for obtaining permissions and performing the activities thereof with regard to the design/execution of the Works and remedying of defects (matters followed after Sub-Paragraph (b)). That is why an AND/OR shape is used after Shape 1 to fulfil either of the conditions explained above, and also the conditions when Particular Conditions include provisions for both of the cases as explained.

### 1.14 Joint Several Liability\*



\* To read the original text of this sub-clause, please refer to: International Federation of Consulting Engineers (1999) 1.14 Joint several liability, in: *Conditions of Contract for Plant and Design-Build for Electrical and Mechanical Plant and for Building and Engineering Works Designed by the Contractor*. Geneva: FIDIC, p. 8.