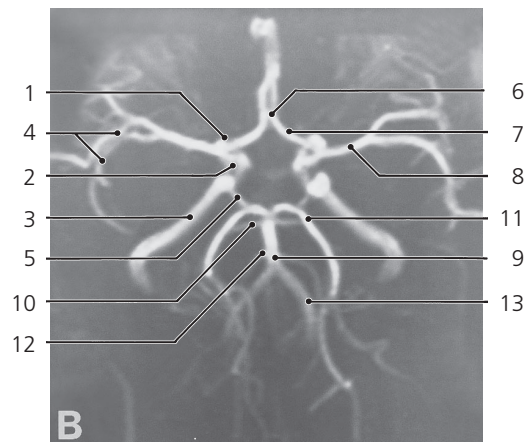
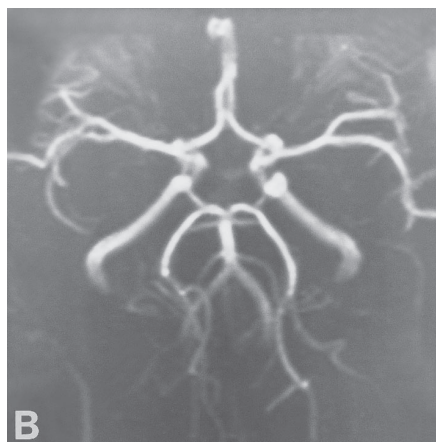
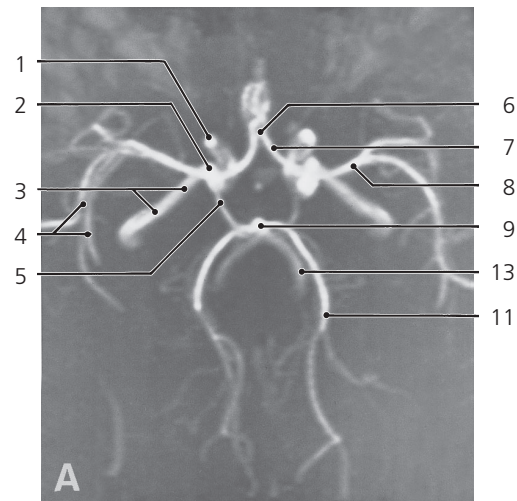


Scout view for MR angiography series

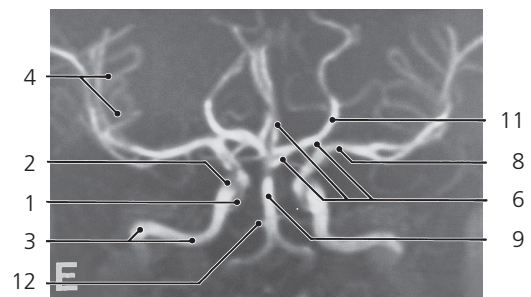
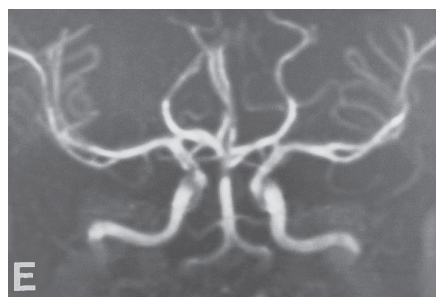
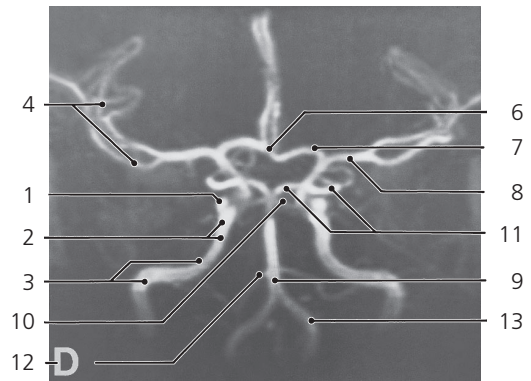
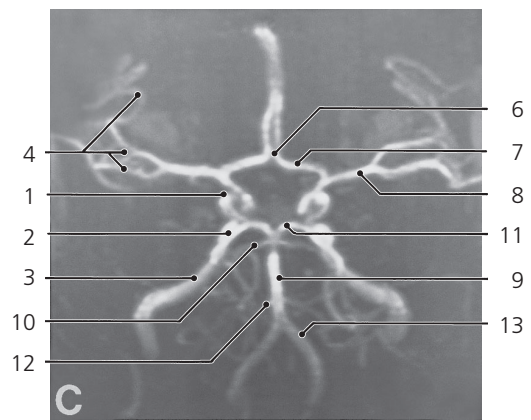
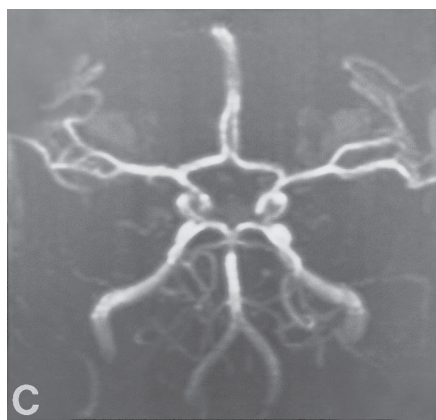
The following MR angiography series shows the bilateral set of cerebral arteries in a volume of brain, limited anteriorly and posteriorly, cranially and caudally as indicated by the frame on the scout view. The individual images A-E are the projected views perpendicular to the planes indicated by A-E on the scout view.

See corresponding series on pages 318–319.



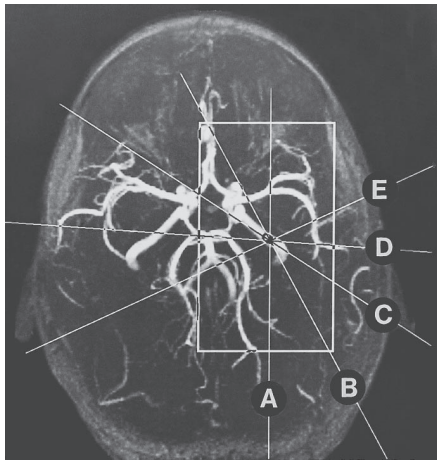
Brain arteries, MR angiography, circle of Willis

- | | | |
|---|-----------------------------------|--|
| 1: Internal carotid artery, "siphon" | 5: Posterior communicating artery | 11: Posterior cerebral artery |
| 2: Internal carotid artery in cavernous sinus | 6: Anterior communicating artery | 12: Anterior inferior cerebellar artery (AICA) |
| 3: Internal carotid artery in carotid canal | 7: Anterior cerebral artery | 13: Vertebral artery |
| 4: Insular branches of middle cerebral artery | 8: Middle cerebral artery | |
| | 9: Basilar artery | |
| | 10: Superior cerebellar artery | |



Brain arteries, MR angiography, circle of Willis

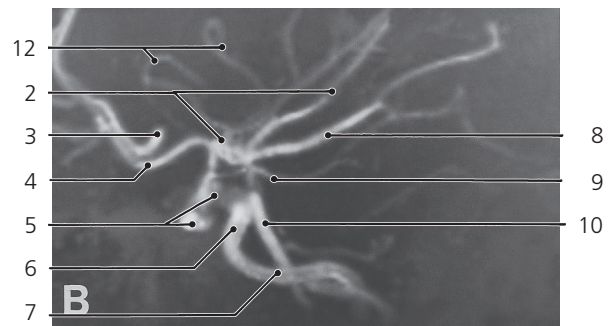
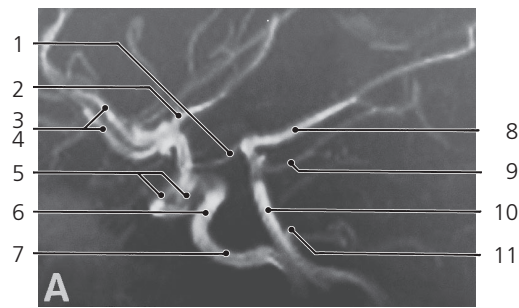
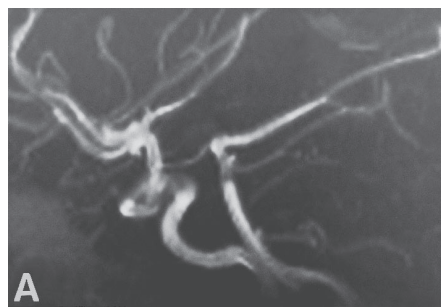
- | | | |
|--|--|---|
| 1: Internal carotid artery, "siphon" | 5: Posterior communicating artery | 11: Posterior cerebral artery |
| 2: Internal carotid artery in cavernous sinus | 6: Anterior communicating artery | 12: Anterior inferior cerebellar artery (AICA) |
| 3: Internal carotid artery in carotid canal | 7: Anterior cerebral artery | 13: Vertebral artery |
| 4: Insular branches of middle cerebral artery | 8: Middle cerebral artery | |
| | 9: Basilar artery | |
| | 10: Superior cerebellar artery | |



Scout view for MR angiography series

The following MR angiography series shows the cerebral arteries in a volume of the left hemisphere, reaching just across the midline and limited anteriorly and posteriorly, medially and laterally as indicated by the frame on the scout view.

See corresponding series on the previous pages.

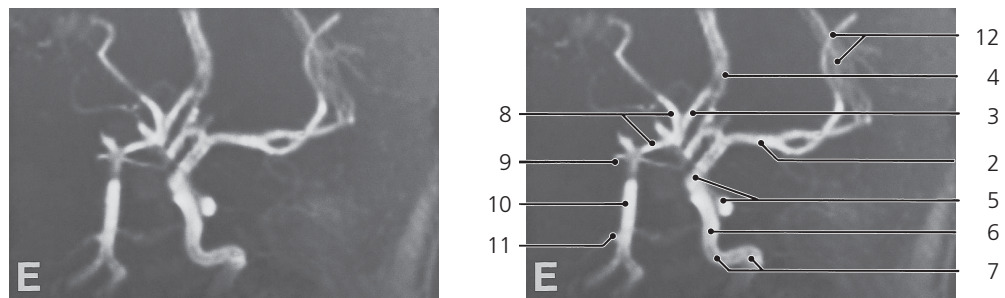
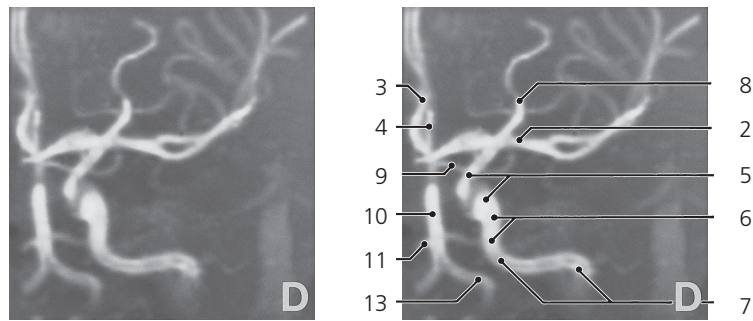
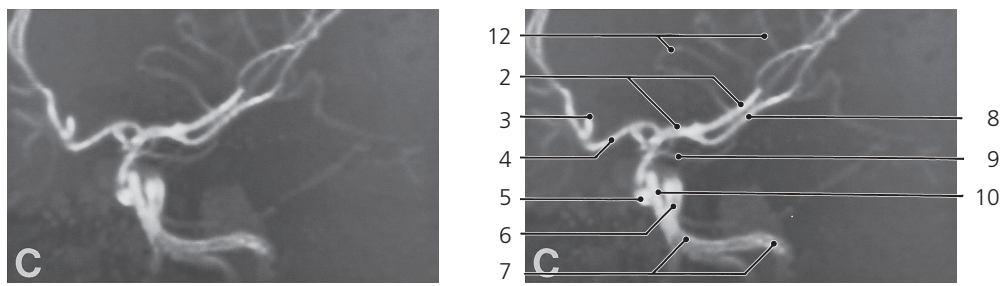


Brain arteries, MR angiography, circle of Willis

- 1: Posterior communicating artery
- 2: Middle cerebral artery
- 3: Right anterior cerebral artery
- 4: Left anterior cerebral artery
- 5: Internal carotid artery ("siphon")

- 6: Internal carotid artery in cavernous sinus
- 7: Internal carotid artery in carotid canal
- 8: Posterior cerebral artery
- 9: Superior cerebellar artery

- 10: Basilar artery
- 11: Anterior inferior cerebellar artery (AICA)
- 12: Insular branches of middle cerebral artery



Brain arteries, MR angiography, circle of Willis

- | | | |
|---|--|--|
| 1: Posterior communicating artery | 7: Internal carotid artery in carotid canal | 12: Insular branches of middle cerebral artery |
| 2: Middle cerebral artery | 8: Posterior cerebral artery | 13: Vertebral artery |
| 3: Right anterior cerebral artery | 9: Superior cerebellar artery | |
| 4: Left anterior cerebral artery | 10: Basilar artery | |
| 5: Internal carotid artery ("siphon") | 11: Anterior inferior cerebellar artery (AICA) | |
| 6: Internal carotid artery in cavernous sinus | | |